



# Scattering of dislocated wave fronts by vertical vorticity and the Aharonov-Bohm effect. I Shallow water

Christophe Coste, Fernando Lund, Makoto Umeki

## ► To cite this version:

Christophe Coste, Fernando Lund, Makoto Umeki. Scattering of dislocated wave fronts by vertical vorticity and the Aharonov-Bohm effect. I Shallow water. Physical Review E , 1999, 60, pp.4908-4916. 10.1103/PhysRevE.60.4908 . hal-01406806

**HAL Id: hal-01406806**

**<https://u-paris.hal.science/hal-01406806>**

Submitted on 1 Dec 2016

**HAL** is a multi-disciplinary open access archive for the deposit and dissemination of scientific research documents, whether they are published or not. The documents may come from teaching and research institutions in France or abroad, or from public or private research centers.

L'archive ouverte pluridisciplinaire **HAL**, est destinée au dépôt et à la diffusion de documents scientifiques de niveau recherche, publiés ou non, émanant des établissements d'enseignement et de recherche français ou étrangers, des laboratoires publics ou privés.



Distributed under a Creative Commons Attribution 4.0 International License

# Scattering of dislocated wave fronts by vertical vorticity and the Aharonov-Bohm effect.

## I. Shallow water

Christophe Coste,<sup>1</sup> Fernando Lund,<sup>2</sup> and Makoto Umeki<sup>3</sup>

<sup>1</sup>*Laboratoire de Physique, ENS Lyon 46, Allée d'Italie 69364 Lyon Cedex 07, France*

<sup>2</sup>*Departamento de Física, Facultad de Ciencias Físicas y Matemáticas, Universidad de Chile, Casilla 487-3, Santiago, Chile*

<sup>3</sup>*Department of Physics, University of Tokyo, 7-3-1 Hongo, Bunkyo-ku, Tokyo 113, Japan*

(Received 26 October 1998; revised manuscript received 27 April 1999)

When a surface wave interacts with a vertical vortex in shallow water the latter induces a dislocation in the incident wave fronts that is analogous to what happens in the Aharonov-Bohm effect for the scattering of electrons by a confined magnetic field. In addition to this global similarity between these two physical systems there is scattering. This paper reports a detailed calculation of this scattering, which is quantitatively different from the electronic case in that a surface wave penetrates the inside of a vortex while electrons do not penetrate a solenoid. This difference, together with an additional difference in the equations that govern both physical systems, lead to a quite different scattering in the case of surface waves, whose main characteristic is a strong asymmetry in the scattering cross section. The assumptions and approximations under which these effects happen are carefully considered, and their applicability to the case of the scattering of acoustic waves by vorticity is noted. [S1063-651X(99)18610-0]

PACS number(s): 41.20.Jb, 47.35.+i, 47.10.+g

## I. INTRODUCTION

In a remarkable paper, Berry *et al.* [1] clarified the way in which a curl-free magnetic vector potential modifies the wave front structure of an electronic wave function that obeys the nonrelativistic Schrödinger equation. They concluded that for electrons traveling outside an infinitely long cylinder enclosing a magnetic field, the wave fronts outside the cylinder would be dislocated by an amount proportional to the amount of magnetic flux within the cylinder. Reasoning by analogy, they also concluded that such dislocated wave fronts should occur for surface water waves when they encounter a vortex. A simple experiment conclusively demonstrated this effect [1].

In the case of the electronic wave function interacting with a confined magnetic field (and its unconfined vector potential) Berry *et al.* [1] also computed the complete solution to the Schrödinger equation that, in addition to the dislocated wave, includes a scattered wave. Trying to do this in the case of the water waves is, however, more difficult because the analogy between de Broglie waves and water waves breaks down when pushing it into a quantitative statement. There are two essential differences: The first is that for an electron the appropriate boundary condition is that the wave function vanishes at the surface of the cylinder; in the case of water waves, the waves of course penetrate inside the vortex and it becomes necessary to solve the appropriate equations not only outside the vortex but also inside, and match them with continuity conditions. The second is that the wave equations that govern both phenomena, although similar, differ in quantitative details. This paper addresses both these issues.

The scattering of surface waves by vertical vorticity in shallow water was discussed by Cerda and Lund [2] and by Umeki and Lund [3] who discovered that a vortex may support spiral wave solutions. Fabrikant and Raevsky [4] have

studied the case of a fluid of arbitrary depth in a Born approximation. The interaction between surface waves and vertical vorticity is in many respects similar to that of acoustic waves and vorticity, a topic that has been much studied over the years and that recently has been the subject of particular interest due to the possibility of using acoustic waves as a nonintrusive probe of vortical flows, both laminar and turbulent [5], much in the same way that x rays and neutrons are used to probe condensed matter structures, both ordered and disordered. Most treatments, however, rely on a Born approximation [6] whose validity breaks down when a surface wave interacts with a vertical vortex with nonvanishing circulation, leading to a long-range velocity field that decays like  $1/r$  where  $r$  is the distance to the vortex core. This is precisely the case that is studied in the present paper. The decomposition of the wave as the sum of an incident and a scattered part is no longer possible if the vortical flow extends toward infinity. As in Berry's calculations, we exhibit a dislocated wave, which cannot be considered as such a sum. The dislocation is essentially a nonperturbative effect, which cannot be properly taken into account in the Born approximation. The scattering of acoustic waves by vortices of nonvanishing circulation has been the subject of a number of recent experimental studies [7].

This paper is organized as follows: Section II derives the equations that describe the scattering of a surface wave by vertical vorticity in shallow water. We pay particular attention to the assumptions needed to derive those equations. Section III has a reminder on the Aharonov-Bohm effect as relevant for the present discussion. Section IV presents the computation of the solution to the equations derived in Sec. II. Section V presents several illustrative examples and Section VI has concluding remarks. Technical details are contained in two Appendices. A subsequent paper [8] studies the first-order corrections to the shallow water approximation.

## II. SHALLOW WATER WAVES IN INTERACTION WITH A VERTICAL VORTEX

We consider the problem of the interaction of shallow water surface waves in an inviscid incompressible fluid of uniform depth  $h$  with a stationary vertical vortex. The coordinates are  $(x, y) = \mathbf{x}$  in the horizontal direction and  $z$  in the vertical direction. The velocity and the surface displacement are denoted by  $\mathbf{v}(\mathbf{x}, z, t) = [\mathbf{v}_\perp(\mathbf{x}, z, t), w(\mathbf{x}, z, t)]$  and  $\eta(\mathbf{x}, t)$ , respectively. We consider surface waves whose frequency is high by comparison with the inverse of the time scale associated with any thermal or viscous relaxation effects. As a matter of fact, we do not expect qualitative changes due to viscosity, apart from a decrease in the wave amplitude, which is, of course, not predicted in our calculations.

The equations of shallow water waves are [9]

$$\partial_t \eta + h \nabla_\perp \cdot \mathbf{v}_\perp + \nabla_\perp \cdot (\eta \mathbf{v}_\perp) = 0, \quad (2.1)$$

where  $h$  is the fluid depth and  $\nabla_\perp$  is a horizontal gradient, and

$$\partial_t \mathbf{v}_\perp + (\mathbf{v}_\perp \cdot \nabla_\perp) \mathbf{v}_\perp = -g \nabla_\perp \eta, \quad (2.2)$$

where  $g$  is the gravity acceleration.

We will consider surface waves with particle velocity  $\mathbf{u}(\mathbf{x}, t)$  and surface deformation  $\eta_1(\mathbf{x}, t)$  as small perturbations on a background flow consisting of a steady vertical vortex  $\mathbf{U}(\mathbf{x})$ , with corresponding surface deformation  $\eta_0(\mathbf{x})$ ;  $u \ll U$ , where  $U$  denotes a typical value of  $\mathbf{U}(\mathbf{x})$ , and  $\eta_1 \ll \eta_0$ . Substituting  $\mathbf{v}_\perp = \mathbf{U}(\mathbf{x}) + \mathbf{u}(\mathbf{x}, t)$  and  $\eta = \eta_0(\mathbf{x}) + \eta_1(\mathbf{x}, t)$  into Eqs. (2.2) and (2.1) allows, to zeroth order, the computation of  $\eta_0$  in terms of  $\mathbf{U}$  for the background flow. The first-order equations are

$$\partial_t \mathbf{u} + (\mathbf{U} \cdot \nabla_\perp) \mathbf{u} = -(\mathbf{u} \cdot \nabla_\perp) \mathbf{U} - g \nabla_\perp \eta_1, \quad (2.3)$$

$$\partial_t \eta_1 + (\mathbf{U} \cdot \nabla_\perp) \eta_1 = -h \nabla_\perp \cdot \mathbf{u} - [\eta_0 \nabla_\perp \cdot \mathbf{u} + (\mathbf{u} \cdot \nabla_\perp) \eta_0]. \quad (2.4)$$

Taking the horizontal divergence of Eq. (2.3), setting  $\Delta_\perp = \nabla_\perp^2$ , we obtain ( $i, j = 1, 2$ )

$$D_t \nabla_\perp \cdot \mathbf{u} + g \Delta_\perp \eta_1 = -2(\partial_i U_j)(\partial_j u_i), \quad (2.5)$$

where  $D_t \equiv \partial_t + \mathbf{U} \cdot \nabla_\perp$ . Taking the difference between  $D_t$  of Eq. (2.5) and  $h$  times Eq. (2.5) leads to

$$D_t^2 \eta_1 - c^2 \Delta_\perp \eta_1 = -D_t [\eta_0 \nabla_\perp \cdot \mathbf{u} + (\mathbf{u} \cdot \nabla_\perp) \eta_0] + 2h(\partial_i U_j) \times (\partial_j u_i), \quad (2.6)$$

where  $c = \sqrt{gh}$  is the phase velocity of shallow water waves.

We consider the case  $U \ll c$ . In analogy with gas dynamics, we call  $M = U/c$  the Mach number. We denote a typical length scale of the vortex by  $a$ , and the wavelength and frequency of shallow water waves by  $\lambda$  and  $\nu$ , respectively. We will assume that wavelengths are small compared to vortex size [10]:  $ka \equiv \beta \gg 1$  ( $k = 2\pi/\lambda$ ).

Under these assumptions, the right-hand side of Eq. (2.6) will be  $O(M)$  or  $O(\beta^{-1})$  compared with the left-hand side. Neglecting these terms, the final equation to be solved is

$$D_t^2 \eta_1 - c^2 \Delta_\perp \eta_1 = 0. \quad (2.7)$$

Note that one might be tempted to neglect  $(\mathbf{U} \cdot \nabla_\perp) \eta_1$  with respect to  $\partial_t \eta_1$  on the grounds that  $U \ll c$ . However, it is possible to have  $(\mathbf{U} \cdot \nabla_\perp) \eta_1 \sim \partial_t \eta_1$  without violating this small Mach number assumption by considering (as we do in Sec. IV below) a background velocity  $U \sim \omega a$  with length scale  $a$  and frequency scale  $\omega$ , together with  $\nu \gg \omega$  and  $ka \gg 1$ .

Equation (2.7) is readily obtained under the same assumptions in the scattering of acoustic waves by a vortex [3]. The physics is the same since acoustic waves and shallow water waves are both *nondispersive*, and the results of Secs. IV and V are valid for both types of waves. They depend only on two parameters, the dimensionless wave number  $\beta$  and the Mach number  $M$ , and when those parameters are the same the results that hold for the surface elevation  $\eta_1$  may be transposed, quantitatively and with no change, for the scattered acoustic pressure.

## III. ANALOGY WITH THE AHARONOV-BOHM EFFECT

Wave equation (2.7) possesses a close analogy with the quantum mechanical wave equation describing the Aharonov-Bohm effect, in which a magnetic vector potential influences the dynamics of a charged particle in a region where the magnetic field vanishes. This cannot happen in classical electrodynamics [11]. In its simplest form, this effect occurs when a beam of particles with charge  $q$  and mass  $m$  is incident normally on a long thin cylinder containing a magnetic field  $\mathbf{B}(\mathbf{x})$  parallel to its axis. The Schrödinger equation in the presence of a magnetic vector potential  $\mathbf{A}$  is

$$\frac{1}{2m} [-i\hbar \nabla - q\mathbf{A}(\mathbf{x})]^2 \psi(\mathbf{x}) = \frac{\hbar^2 k^2}{2m} \psi(\mathbf{x}), \quad (3.1)$$

where  $\hbar$  is Planck's constant. Outside the cylinder,  $\mathbf{A}(\mathbf{x}) = (\Phi/2\pi r)\hat{\theta}$ , with  $\Phi$  the magnetic flux contained within the cylinder, and  $\hat{\theta}$  an azimuthal unit vector. Of course,  $\mathbf{B} = 0$  outside the cylinder.

Both Eqs. (2.7) and (3.1) allow for a solution of the form

$$\exp[-i(\mathbf{k} \cdot \mathbf{x} + \alpha \theta)],$$

where  $\alpha = \nu \Gamma / (2\pi c^2) = k\Gamma / 2\pi c$  in the fluid mechanics case and  $\alpha = -q\Phi / 2\pi\hbar$  in the quantum mechanics case. This is an exact statement in the latter case, while in the water wave case it is approximate because Eq. (2.7) is valid only when  $M \ll 1$  and  $\beta \gg 1$ . Except for integer values of  $\alpha$ , this is a multivalued solution. Berry *et al.* [1] showed how fixing this multivaluedness leads to a solution that is a superposition of dislocated wave fronts and scattered waves. This was achieved by solving Schrödinger equation (3.1) with impenetrable boundary conditions:  $\psi = 0$  at the surface of the cylinder. The appropriate boundary conditions in the fluids case are continuity of velocity and of surface elevation. We now turn our attention to solving Eq. (2.7) under these conditions. One important physical difference between the classical and quantum mechanical cases is that in the latter the phase of the waves cannot be measured, while in the classical case it can. Table I compares these two cases.

TABLE I. Aharonov-Bohm effect in quantum and classical mechanics compared and contrasted.

Quantum mechanics	Fluid mechanics
Magnetic field	Vorticity
$\mathbf{B} = \nabla \times \mathbf{A}$	$\omega = \nabla \times \mathbf{U}$
Vector potential $\mathbf{A}$	Velocity $\mathbf{U}$
Magnetic flux $\Phi$	Velocity circulation $\Gamma$
Wave function $\psi$	Surface displacement $\eta$
Dislocation parameter	Dislocation parameter
$\alpha = -q\Phi/2\pi\hbar$	$\alpha = k\Gamma/2\pi c$
Dislocated wave is an exact solution	Dislocated wave is approximate solution
Phase is not measurable	Phase is measurable

#### IV. SCATTERING OF DISLOCATED WAVES BY A VORTEX

As an example, we consider a scattering problem by a circular uniform vortex with vorticity  $\omega$  and radius  $a$  surrounded by an irrotational flow. Using polar coordinates  $(r, \theta)$ , the background flow is given by [12]

$$\mathbf{U} = \begin{cases} \frac{1}{2}\omega r \hat{\theta} & \text{if } r \leq a, \\ \frac{\Gamma}{2\pi r} \hat{\theta} & \text{if } r > a, \end{cases} \quad (4.1)$$

where  $\Gamma = \pi\omega a^2$  is the circulation. Equation (2.7) will be solved separately for  $r < a$  and  $r > a$ , and the results matched with a continuity condition.

Inside the vortex we have from Eq. (2.7)

$$\{[\partial_t + (\omega/2)\partial_\theta]^2 - c^2[\partial_r^2 + (1/r)\partial_r + (1/r^2)\partial_\theta^2]\} \eta_1 = 0. \quad (4.2)$$

We look for solutions that evolve harmonically (with a single global frequency  $\nu$ ) in time, and Fourier decompose them in the polar angle  $\theta$ :

$$\eta_1 = \text{Re} \left[ \sum_n \tilde{\eta}_{1n} e^{i(n\theta - \nu t)} \right], \quad (4.3)$$

where Re stands for the real part. Introducing this expression into Eq. (4.1) we obtain

$$\left( \frac{d^2}{dr^2} + \frac{1}{r} \frac{d}{dr} - \frac{n^2}{r^2} + k_n^2 \right) \tilde{\eta}_{1n} = 0, \quad k_n = \frac{|\nu - n\omega/2|}{c}. \quad (4.4)$$

Equation (4.4) has both Bessel and Hankel functions [13] as solutions if  $k_n \neq 0$ . Regularity at the origin will exclude the latter. If  $2\nu/\omega$  is an integer,  $k_n (= k|1 - n/n_d|)$  vanishes for  $n = n_d \equiv 2\nu/\omega$ . In this case, Eq. (4.4) can be solved by assuming  $\tilde{\eta}_{1n} \propto r^p$ . Substituting this into Eq. (4.4), we have  $p = \pm n$  and negative values of  $p$  are excluded, again because of regularity at the origin. Thus we have

$$\eta_1(r, \theta, t) = \text{Re} \left[ \sum_{n \neq n_d} a_n \frac{J_{|n|}(k_n r)}{J_{|n|}(k_n a)} e^{i(n\theta - \nu t)} + C a_{n_d} \left( \frac{r}{a} \right)^{n_d} e^{i(n_d \theta - \nu t)} \right], \quad (4.5)$$

where the  $a_n$  are as yet undetermined coefficients and  $C = 1$  when  $2\nu/\omega$  is an integer and vanishes otherwise.

Outside the vortex,  $r > a$ , the assumption  $U^2/c^2 \ll 1$  reduces Eq. (2.7) to

$$\left[ \partial_t^2 + \frac{\Gamma}{\pi r^2} \partial_\theta \partial_t - c^2 [\partial_r^2 + (1/r)\partial_r + (1/r^2)\partial_\theta^2] \right] \eta_1 = 0. \quad (4.6)$$

Inserting form (4.3) of  $\eta_1$  into this equation gives

$$\left( \frac{d^2}{dr^2} + \frac{1}{r} \frac{d}{dr} - \frac{n^2 + 2n\alpha}{r^2} + k^2 \right) \tilde{\eta}_{1n} = 0, \quad k = \frac{\nu}{c} \quad (4.7)$$

with  $\alpha = \nu\Gamma/2\pi c^2$ . We wish this parameter to be of the order of 1. Following Berry *et al.* [1] we write the surface elevation outside the vortex in the form

$$\eta_1 = \text{Re}(\eta_{AB} + \eta_R), \quad (4.8)$$

where

$$\eta_{AB} = \sum_n b_n \frac{J_m(kr)}{J_m(\beta)} e^{i(n\theta - \nu t)}, \quad m \equiv \sqrt{n^2 + 2n\alpha} \quad (4.9)$$

with  $\beta \equiv ka$ , and

$$\eta_R = \sum_n c_n \frac{H_m^1(kr)}{H_m^1(\beta)} e^{i(n\theta - \nu t)}. \quad (4.10)$$

The coefficients  $a_n$ ,  $b_n$ , and  $c_n$  are defined so that they denote the amplitude of the wave components at the vortex boundary  $r = a$ . In order to obtain these coefficients, the continuity of  $\eta$  and  $\nabla_\perp \eta$  at  $r = a$  is required, which gives two relations. The third condition comes from the boundary condition of  $\eta$  at infinity. We require that the asymptotics of  $\eta_{AB}$  coincides with the dislocated wave incident from the right plus outgoing waves only. This leads to (see Appendix A)

$$\frac{b_n}{J_m(\beta)} = (-i)^m. \quad (4.11)$$

Using the notation

$$\gamma_n \equiv \frac{k_n}{k} = \left| 1 - \frac{n\alpha}{\beta^2} \right| \quad (4.12)$$

and the relationship  $zZ'_\nu(z) = zZ_{\nu-1}(z) - \nu Z_\nu(z)$ , where  $Z_\nu(z)$  is any one of the Bessel functions, the following expressions for  $a_n$  and  $c_n$  are obtained, when  $\gamma_n \neq 0$ :

$$a_n = \frac{(-i)^m J_m(\beta)}{\Delta_n} \left[ -\frac{H_{m-1}^1(\beta)}{H_m^1(\beta)} + \frac{J_{m-1}(\beta)}{J_m(\beta)} \right], \quad (4.13)$$

$$c_n = \frac{(-i)^m J_m(\beta)}{\Delta_n} \left[ -\frac{\gamma_n J_{|n|-1}(\beta \gamma_n)}{J_{|n|}(\beta \gamma_n)} + \frac{J_{m-1}(\beta)}{J_m(\beta)} - \frac{1}{\beta}(m - |n|) \right], \quad (4.14)$$

where

$$\Delta_n = -\frac{H_{m-1}^1(\beta)}{H_m^1(\beta)} + \frac{\gamma_n J_{|n|-1}(\beta \gamma_n)}{J_{|n|}(\beta \gamma_n)} + \frac{1}{\beta}(m - |n|), \quad m = \sqrt{n^2 + 2n\alpha}. \quad (4.15)$$

If  $\gamma_n = 0$ , i.e.,  $n = n_d$ , these formulas are replaced by

$$a_{n_d} = \frac{(-i)^m J_{m_d}(\beta)}{\Delta_{n_d}} \left[ -\frac{H_{m_d-1}^1(\beta)}{H_{m_d}^1(\beta)} + \frac{J_{m_d-1}(\beta)}{J_{m_d}(\beta)} \right], \quad (4.16)$$

$$c_{n_d} = \frac{(-i)^m J_{m_d}(\beta)}{\Delta_{n_d}} \left[ -(n_d + m_d)\beta^{-1} + \frac{J_{m_d-1}(\beta)}{J_{m_d}(\beta)} \right], \quad (4.17)$$

where

$$\Delta_{n_d} = -\frac{H_{m_d-1}^1(\beta)}{H_{m_d}^1(\beta)} + (m_d + n_d)\beta^{-1}, \quad m_d = \sqrt{n_d^2 + 2n_d\alpha}. \quad (4.18)$$

These expressions are the main algebraic result of this paper.

The limit  $r \rightarrow \infty$  gives the surface elevation as

$$\begin{aligned} \eta_{AB} \rightarrow & e^{i(-kr \cos \theta + \alpha \theta - \nu t)} - \frac{ie^{i(kr - \nu t)} \sin \pi \alpha}{(2\pi i k r)^{1/2} \cos(\theta/2)} \\ & \times (-1)^{[\alpha]} e^{i([\alpha] + 1/2)\theta} + \frac{e^{i(kr - \nu t)}}{(2\pi i k r)^{1/2}} G(\theta, -\pi/2), \end{aligned} \quad (4.19)$$

where the function  $G$  is defined in Appendix A, and  $[\alpha]$  denotes the integral part of  $\alpha$ . The second term in the right-hand side of the equation diverges for  $\theta \rightarrow \pi$ . This is because this asymptotics is valid everywhere except in a narrow sector centered around the forward direction,  $\theta = \pi$ , of angular width  $O(1/\sqrt{kr})$ , where  $\eta_{AB}$  cannot be separated into incident and scattered waves [14], and it does not make sense to speak of a forward scattering amplitude. This peculiarity was already pointed out by Aharonov & Bohm [11] in the case of scattering by a *point* vortex. In the hydrodynamical context, the dislocation, as well as all effects studied in the present paper, will persist for times short compared with viscous relaxation times.

Also,

$$\eta_R \rightarrow \left( \frac{2}{\pi i k r} \right)^{1/2} e^{i(kr - \nu t)} \sum_n \frac{c_n}{H_m^1(\beta)} e^{i(n\theta - \pi m/2)}. \quad (4.20)$$

The sum of the last term of Eqs. (4.19) and (4.20) is the correction to the Aharonov-Bohm scattering amplitude that comes from the matching of the surface elevation and of its gradient inside and outside the vortex core.

Berry *et al.* have calculated a correction for different boundary conditions. They consider the finite radius of the scattering solenoidal field, which is considered as impenetrable. In the quantum mechanical context, the scattering is due to the magnetic field inside the solenoid, and in a hydro-mechanical context it could be a solid body rotating in a perfect fluid. Their result reads [1]

$$\eta_R^{\text{Berry}} \rightarrow \left( \frac{2}{\pi i k r} \right)^{1/2} e^{i(kr - \nu t)} \sum_n \frac{J_{|n-\alpha|}(\beta)}{H_{|n-\alpha|}^1(\beta)} e^{i(n\theta - \pi|n-\alpha|)}. \quad (4.21)$$

Since the usual scattering cross section is not defined in the forward direction, it is interesting instead to compare the difference in the far-field correction to the Aharonov-Bohm wave function (obtained in the limit of zero cylinder thickness) calculated by Berry *et al.* on the basis of the Schrödinger equation, and our own calculations obtained on the basis of the fluids equations. The general asymptotic form of the scattered wave is  $\propto 1/\sqrt{r}$ . In the following section, we will compare the correction to the Aharonov-Bohm scattering amplitude for a vortex, that is,

$$G(\theta, -\pi/2) + 2 \sum_n \frac{c_n}{H_m^1(\beta)} e^{in\theta} (-i)^m, \quad (4.22)$$

with the correction for an impenetrable solenoidal field,

$$2 \sum_n \frac{J_{|n-\alpha|}(\beta)}{H_{|n-\alpha|}^1(\beta)} e^{i(n\theta - \pi|n-\alpha|)}. \quad (4.23)$$

## V. NUMERICAL EXAMPLES

The solutions we have obtained are parametrized by two dimensionless numbers:  $\alpha = \nu\Gamma/2\pi c^2$  and  $\beta = ka$ . That is, for a given incident wave, they depend on vortex radius and circulation as independent parameters. The Mach number is related to  $\alpha$  and  $\beta$  through  $\alpha = M\beta$ . Scaling radial distance with the vortex radius,  $r' \equiv r/a$ , the analytical expression of the surface displacement is summarized as follows:

$$\eta_1 = \text{Re } \eta_c, \quad 0 < r' \leq 1$$

$$\eta_c = \sum_{n \neq n_d} a_n \frac{J_{|n|}(\gamma_n \beta r')}{J_{|n|}(\gamma_n \beta)} e^{i(n\theta - \nu t)} + C(n_d) a_{n_d} r'^{n_d} e^{i(n_d \theta - \nu t)}, \quad (5.1)$$

$$\eta_1 = \text{Re}(\eta_{AB} + \eta_R), \quad r' > 1$$

$$\eta_{AB} = \sum_n (-i)^m J_m(\beta r') e^{i(n\theta - \nu t)}, \quad (5.2)$$



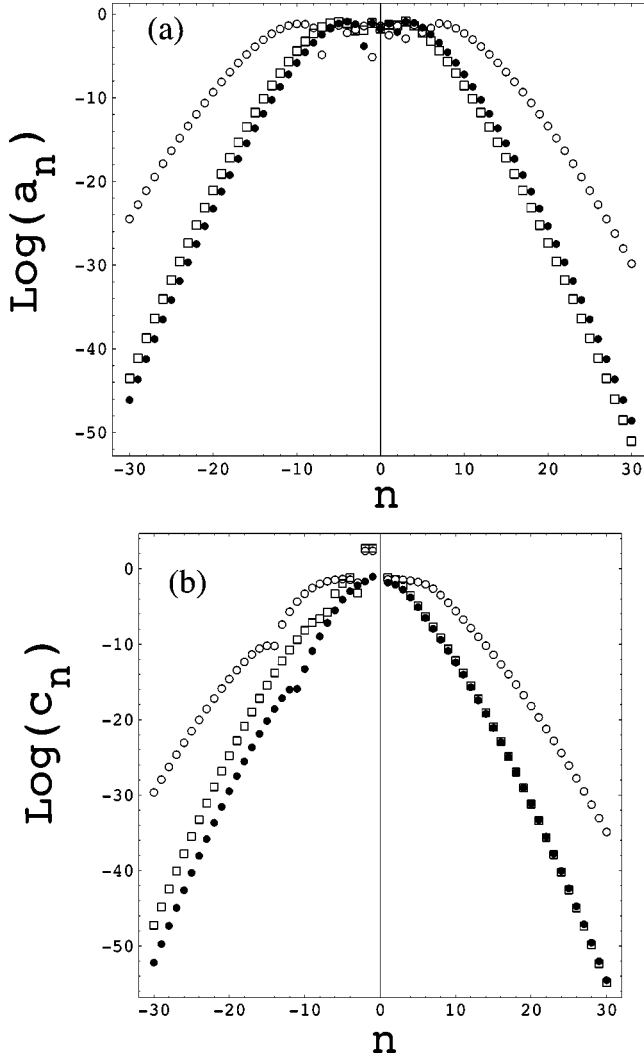


FIG. 1. Plot of the heperian logarithm of the absolute value of the coefficients  $a_n$  (a) and  $c_n$  (b) versus  $n$  in a log-linear scale for  $(\alpha, \beta) = (0.5, 10)$  denoted by dots,  $(\alpha, \beta) = (1.5, 10)$  denoted by empty circles,  $(\alpha, \beta) = (0.5, 5)$  denoted by filled circles, and  $(\alpha, \beta) = (1.5, 5)$  denoted by empty squares. Note the asymmetry with respect to  $n \rightarrow -n$ .

$$\eta_R = \sum_n c_n \frac{H_m^1(\beta r')}{H_m^1(\beta)} e^{i(n\theta - \nu t)}, \quad (5.3)$$

where  $m = \sqrt{n^2 + 2n\alpha}$ .

We have numerically computed the total surface displacement given by Eqs. (5.2) and (5.3) for several values of the parameters  $\alpha$  and  $\beta$ . In order to approximate the series in Eqs. (5.2) and (5.3) by a finite sum, it is necessary to estimate their convergence. This is done in Appendix B, where it is shown that  $\eta_c$  is an absolutely and uniformly convergent series, and that  $\eta_{AB}$  and  $\eta_R$  are both absolutely and simply convergent series. As an illustration, absolute values of the coefficients  $a_n$  and  $c_n$  are plotted in Fig. 1.

Since convergence of the series expansions for  $\eta_{AB}$  and  $\eta_R$  is not uniform, the number of terms to keep in the infinite series depends on the value of  $r'$ . In practice, we compute the patterns of the surface displacement in the region  $|x'|, |y'| \leq 5[(x', y') = (r' \cos \theta, r' \sin \theta)]$  by the finite sum of

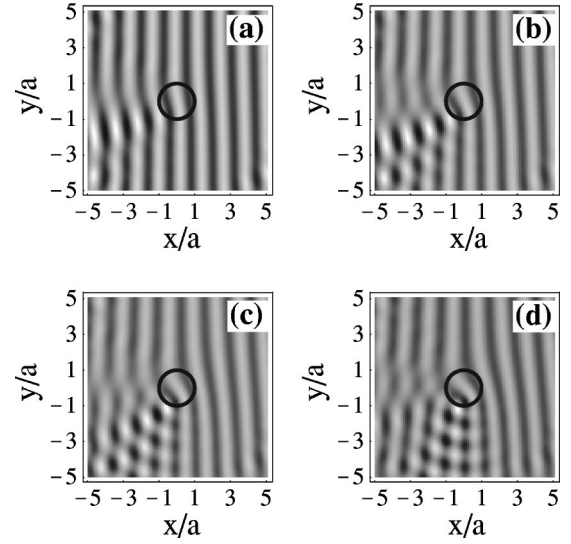


FIG. 2. Density plot of the surface elevation for the total wave patterns for  $\beta = 5$ ,  $\alpha = 0.5$  (a),  $\alpha = 1$  (b),  $\alpha = 1.5$  (c), and  $\alpha = 2$  (d). The grayscale is linear with surface amplitude (arbitrary units). The dark circle indicates the vortex location. Vortex rotation is counter-clockwise. The box size is  $10 \times 10$  in units of the vortex radius  $a$ . The incident wave comes from the right edge of the box. Note the dislocated wave and the asymmetric scattering that occurs practically within a single quadrant.

Eqs. (5.2) and (5.3) with  $|n| \leq 50$  for  $\beta = 10$  and  $|n| \leq 30$  for  $\beta = 5$ , but we keep more terms,  $|n| \leq 90$  in Eq. (5.2). Figure 2 shows the resulting displacements for  $\beta = 5$  and  $\alpha = 0.5, 1, 1.5$ , and  $2$ , and Fig. 3 for  $\beta = 10$  and the same values of  $\alpha$ . The dislocation of the incident wave fronts by an amount equal to  $\alpha$  is clearly visible. The outward traveling scattered wave is also visible. Note the strong interference patterns between scattered and incident wave.

Another illustration is given in Fig. 4, where we subtract from the total field the dislocated wave. The scattered wave appears as an outgoing cylindrical wave, with a clearly visible dislocation in the forward direction. This is the part of the wave that *does not* decrease as  $1/\sqrt{kr}$ , and that ensures single valuedness of the total field. Note that the representa-

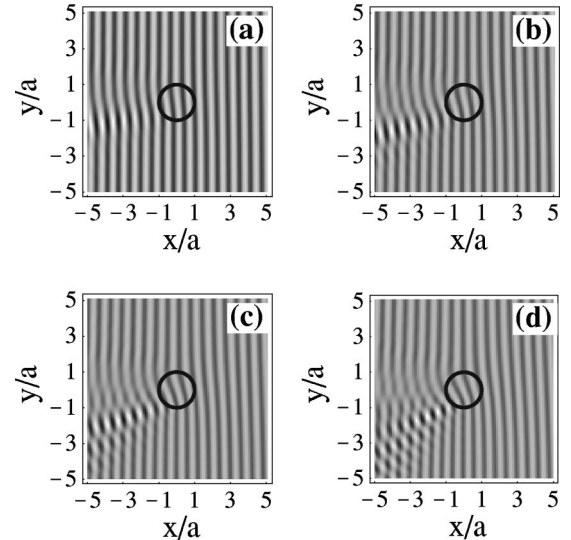


FIG. 3. Same as Fig. 3 for  $\beta = 10$ ,  $\alpha = 0.5$  (a),  $\alpha = 1$  (b),  $\alpha = 1.5$  (c), and  $\alpha = 2$  (d).

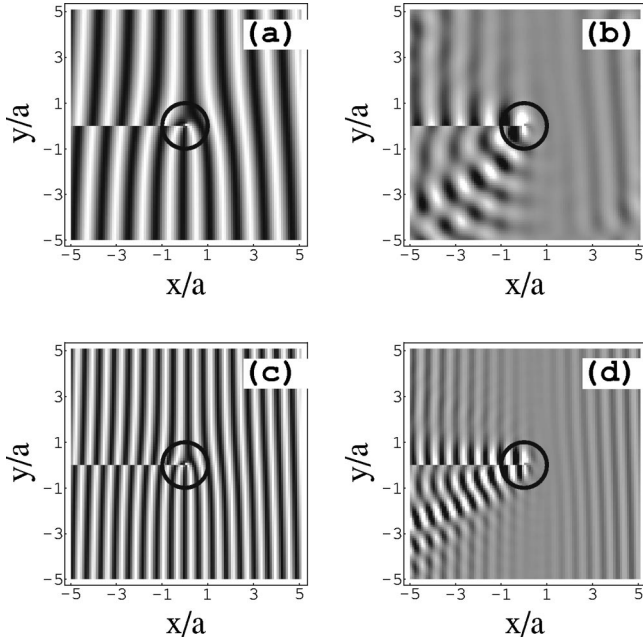


FIG. 4. Density plot of the surface elevation for a dislocated incident wave with parameters  $\alpha=1.5$ ,  $\beta=5$  (respectively,  $\beta=10$ ) (a) [respectively, (c)], and for the difference between the total wave field with the same parameters, represented in Fig. 2(c) [respectively, Fig. 3(c)] and the dislocated wave (b) [respectively, (d)]. (b) and (d) correspond to the scattered wave generated by an incident dislocated wave. Such a scattered wave is itself dislocated in the forward direction, thus ensuring single valuedness.

tion is for a half-integer value of  $\alpha$ , and the scattering amplitude is exactly zero in the direction  $\theta=\pi$  [1]; the comparison between the two figures clearly shows the exact compensation of the dislocation in this direction, because of destructive interference, to yield a single valued total wave field.

Finally, Fig. 5 shows the absolute value of the correction to the Aharonov-Bohm scattering amplitude, compared to the correction calculated by Berry *et al.* For  $\alpha \geq 0.5$ , the parameter  $m$  is imaginary for small negative  $n$ . This induces very different partial amplitudes for  $\exp(-in\theta)$  and  $\exp(in\theta)$  when  $n$  is small. Our calculations thus predict a forward scattering with a strong asymmetry, which increases with  $\alpha$  as shown in Figs. 5(c) and 5(d). This asymmetry effect is observed both in experiments on water wave scattering by a vortex [15] and in direct numerical simulations of sound scattering by a vortex [16]. As can be seen from the dashed curves in Fig. 5, this asymmetry is absent in the calculation of Berry *et al.* For  $\alpha \leq 0.5$ , the parameter  $m$  is real for all  $n$  and the scattering in the forward direction is much less asymmetric [Figs. 5(a) and 5(b)]. This asymmetry may be observed in the purely geometrical acoustics limit when one calculates ray propagation. However, we are able to obtain the interference pattern, and are much closer to the actual experimental conditions. All calculations were performed using MATHEMATICA [17].

## VI. CONCLUDING REMARKS

We have computed the surface displacement due to a surface wave interacting with a vertical vortex in shallow water

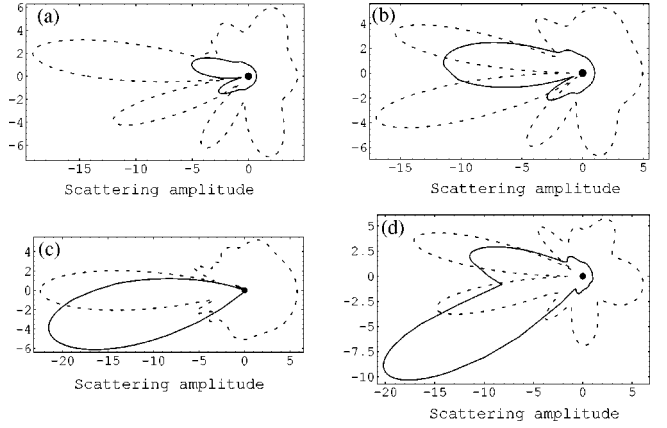


FIG. 5. Polar plot of the absolute value of the correction to the Aharonov-Bohm (i.e., point) scattering amplitude, in the case of an impenetrable cylinder (dashed line) and in the case of a vortex (solid line) for  $\beta=10$  and  $\alpha=0.25$  (a),  $\alpha=0.5$  (b),  $\alpha=1$  (c), and  $\alpha=1.5$  (d).

when the vortex core performs solid body rotation; the wavelength is small compared to the vortex core radius and the particle velocities associated with the wave are small compared with the particle velocities associated with the vortex. When the parameter  $\alpha = \nu\Gamma/2\pi c^2$  is of the order of 1 or bigger, the wave fronts become dislocated. The scattered waves interact strongly with the dislocated wave fronts and produce interference patterns. The differential scattering cross section is strongly peaked along a direction at an angle with respect to the incident direction. This is in contrast with previous calculations of Berry *et al.* [1] in the case of quantum mechanical scattering by an impenetrable cylinder of finite radius. In the sequel to this paper [8], we will show that these properties roughly persist when the depth of the water increases. This is important because deep water waves are much more amenable to actual experiments.

## ACKNOWLEDGMENTS

The work of F.L. was supported by Fondecyt Grant No. 1960892 and a Cátedra Presidencial en Ciencias. We gratefully acknowledge a grant from ECOS-CONICYT.

## APPENDIX A: ASYMPTOTICS

In this appendix, we study the asymptotic behavior of function (4.9). To this end, we use the computations in the Appendix of the paper of Berry *et al.* [1]. In order to avoid confusion, we use the following notations: Our definition of  $m$  is called  $m_{\text{new}} \equiv \sqrt{n^2 + 2n\alpha}$ , whereas the function used in [1] is called  $m_{\text{old}} \equiv |n + \alpha|$ . Similarly, we note  $\tilde{b}_n$  the constants in the series representation of  $\eta_{AB}$  in our paper, whereas the constants for  $\eta_{AB}^{\text{Berry}}$  are noted  $b_n$ .

Solutions to Eq. (4.7) are Bessel functions of order  $m_{\text{new}}$ . Moreover, the dislocated wave

$$\exp[-i(\vec{k} \cdot \vec{x} + \alpha\theta + \nu t)] \quad (\text{A1})$$

is a solution of Eq. (2.7) asymptotically, that is, for  $kr \gg \alpha$ . Consequently, it is appropriate to take as a boundary condition at large distances from the vortex that the solution should approach this dislocated wave.

Let us consider

$$\eta_{AB} = \sum_n \tilde{b}_n \frac{J_{m_{\text{new}}}(kr)}{J_{m_{\text{new}}}(\beta)} e^{i(n\theta - \nu t)}.$$

Coefficients  $\tilde{b}_n$  should be determined from the boundary condition that  $\eta_{AB}$  should tend asymptotically to Eq. (A1) plus purely outgoing cylindrical waves. The representation

$$J_m(z) = \frac{1}{2\pi} \int_{-\pi+i\infty}^{\pi+i\infty} e^{i(mt - z \sin t)} dt \quad (\text{A2})$$

is still valid for  $m = m_{\text{new}}$ , even for those  $m$ 's that are purely imaginary (Ref. [13] p. 954, formula 8.412.6). This happens when  $\alpha$  is bigger than 0.5, and for those  $n$ 's satisfying

$$-2\alpha < n < 0.$$

Next, we note that as  $n$  grows with  $\alpha \sim O(1)$ , the difference between  $m_{\text{old}}$  and  $m_{\text{new}}$  decreases rapidly. Consequently, there will be an  $N$ , such that if  $n > N$ , the difference between the two  $m$ 's will be smaller than any preassigned value. Let us write

$$\begin{aligned} \eta_{AB} = & \eta_{AB}^{\text{point}} + \sum_{|n| < N} \left( \tilde{b}_n \frac{J_{m_{\text{new}}}(kr)}{J_{m_{\text{new}}}(\beta)} - b_n \frac{J_{m_{\text{old}}}(kr)}{J_{m_{\text{old}}}(\beta)} \right) e^{in\theta} \\ & + \underbrace{\sum_{|n| > N} \left( \tilde{b}_n \frac{J_{m_{\text{new}}}(kr)}{J_{m_{\text{new}}}(\beta)} - b_n \frac{J_{m_{\text{old}}}(kr)}{J_{m_{\text{old}}}(\beta)} \right) e^{in\theta}}_{\equiv R_N}. \end{aligned} \quad (\text{A3})$$

The wave  $\eta_{AB}^{\text{point}}$  is the original result of Aharonov and Bohm [11], and represents the scattering by a *point* vortex, hence the notation. Decomposition (A3) is interesting only if the last sum,  $R_N$ , is small when  $N$  is sufficiently large. We will see that it is indeed the case, and we temporarily drop it from the calculations.

We know that if

$$\frac{b_n}{J_{m_{\text{old}}}(\beta)} = (-i)^{m_{\text{old}}},$$

then  $\eta_{AB}^{\text{point}}$  gives a dislocated wave front plus an outgoing cylindrical wave. Next, if

$$\frac{\tilde{b}_n}{J_{m_{\text{new}}}(\beta)} = (-i)^{m_{\text{new}}},$$

we may write

$$\eta_{AB} = \eta_{AB}^{\text{point}} + \int_{-\pi+i\infty}^{\pi+i\infty} dt e^{-ikr \sin t} G(\theta, t),$$

where

$$G(\theta, t) \equiv \sum_{|n| < N} e^{in\theta} (e^{im_{\text{new}}(t-\pi/2)} - e^{im_{\text{old}}(t-\pi/2)}) \quad (\text{A4})$$

is an analytic function of  $t$  because it is a finite sum of analytic functions (exponentials). Also, it is dominated by the contribution from low  $n$ 's. For  $kr \rightarrow \infty$ ,  $\eta_{AB}$  can still be evaluated using steepest descent. Since  $G$  does not have any poles, the pole contribution to  $\eta_{AB}$  is the same as that of Berry *et al.*, namely, Eq. (A4) of [1]. This is good since it is just the dislocated incident wave. Also,  $G(t = \pi/2) = 0$  for all  $\theta$ , including the forward and backwards directions. This means that there are no further contributions from the  $t = \pi/2$  saddle point. This is also good, since the outgoing character of the scattered wave is preserved. On the other hand,

$$G(\theta, -\pi/2) = \sum_{|n| < N} e^{in\theta} (e^{-im_{\text{new}}\pi} - e^{-im_{\text{old}}\pi}).$$

This is different from zero for all  $\theta$ , including the forward and backwards directions and we have, outside a small angular sector around the forward direction, the following asymptotic behavior at large distances:

$$\eta_{AB}(r \rightarrow \infty) = \eta_{AB}^{\text{point}}(r \rightarrow \infty) + \frac{e^{ikr}}{\sqrt{2\pi i k r}} G(\theta, -\pi/2). \quad (\text{A5})$$

This result differs from that obtained by Berry *et al.* [1] on the basis of Schrödinger's equation.

Let us turn back to the behavior of  $R_N$  at large  $N$ . We consider the behavior of

$$|R_N| < \sum_{|n| > N} |(-i)^{m_{\text{new}} - m_{\text{old}}} J_{m_{\text{new}}}(z) - J_{m_{\text{old}}}(z)|, \quad (\text{A6})$$

where  $z = kr$  is a fixed number. Using the asymptotic expressions of Bessel functions for large values of the index (Ref. [13], formula 8.452.1), we have

$$J_{|n+\alpha|}(z) \sim \frac{e^{|n+\alpha|(\tanh \delta_1 - \delta_1)}}{\sqrt{2\pi|n+\alpha|\tanh \delta_1}}, \quad |n+\alpha| \equiv z \cosh \delta_1 \quad (\text{A7})$$

$$J_{\sqrt{n^2+2n\alpha}}(z) \sim \frac{e^{\sqrt{n^2+2n\alpha}(\tanh \delta_2 - \delta_2)}}{\sqrt{2\pi\sqrt{n^2+2n\alpha}\tanh \delta_2}},$$

$$\sqrt{n^2+2n\alpha} \equiv z \cosh \delta_2 \quad (\text{A8})$$

where  $\sim$  means that we consider only the dominant behavior at large  $n$ . An important point is that these expressions suppose that  $n > z$ . The following study concerns simple convergence of the series  $R_N$ , for a fixed value of  $z$ , not uniform convergence valid for all  $z$ . We define

$$\epsilon = \frac{\alpha^2}{2z|n+\alpha|} = O(1/n),$$



so that large  $n$  behavior means small  $\epsilon$ . It is easy to show that  $\delta_2 \sim \delta_1 - \epsilon/\sinh \delta_1$ , and that  $\sqrt{n^2 + 2n\alpha} \sim |n + \alpha| - \epsilon z$ . We then deduce that

$$(-i)^{m_{\text{new}} - m_{\text{old}}} \sim 1 + i \frac{\pi}{2} \epsilon z,$$

$$\sqrt{n^2 + 2n\alpha} (\tanh \delta_2 - \delta_2) \sim |n + \alpha| (\tanh \delta_1 - \delta_1) + \epsilon z \delta_1,$$

and that

$$\sqrt{n^2 + 2n\alpha} \tanh \delta_2 \sim |n + \alpha| \tanh \delta_1 - \epsilon z \cosh \delta_1 / \sinh \delta_1,$$

$$\delta_1 = \operatorname{argcosh} \frac{|n + \alpha|}{z} = O(\ln n),$$

so that

$$\epsilon z \delta_1 = O(\ln n / n) \ll 1$$

for large  $n$ . We have thus

$$\begin{aligned} & (-i)^{m_{\text{new}} - m_{\text{old}}} J_{\sqrt{n^2 + 2n\alpha}}(z) - J_{|n + \alpha|}(z) \\ & \sim \epsilon z (\delta_1 + i\pi/2) J_{|n + \alpha|}(z) \\ & = O\left(\frac{\ln n}{n} \frac{n^{-n}}{\sqrt{n}}\right). \end{aligned}$$

Using only the very rough inequality  $\ln n / n \sqrt{n} < 1$ , we can now conclude on the asymptotic behavior of  $R_N$  at large  $N$ . Beginning with Eq. (A6), we obtain

$$|R_N| < \sum_{N}^{\infty} N^{-n} < N^{-N} \quad (\text{A9})$$

up to prefactors that we have dropped. The important point is that indeed  $R_N$  is a very small correction at large  $N$ , which validates the preceding analysis. As a last remark, we insist on the fact that all calculations are done for a *fixed value* of  $z$ , and that  $N$ , at a prescribed accuracy, may depend on  $z$ .

## APPENDIX B: CONVERGENCE

In this appendix, we discuss the convergence of numerical series (5.2) and (5.3). The simplest case is that of  $\eta_{AB}$ . In this case, the variable  $r'$  may extend toward infinity, and we fix its value in the calculations. Therefore, we can conclude only on simple convergence of the series, not uniform convergence. For large  $n$ ,  $m \sim n$ . Using formula (A7), a *fixed* value of  $z' \equiv \beta r'$ , and the angle  $\delta = O(\ln n)$ , we get

$$J_m(z') \sim \frac{1}{\sqrt{n}} \left(\frac{e}{n}\right)^n,$$

so that most clearly series (5.2) is absolutely simply convergent.

In the coefficients  $a_n$  and  $c_n$ , some functions depend on  $\gamma_n \beta$ , and from Eq. (4.12) we get  $\gamma_n \beta \sim nM$  where  $M \ll 1$  is the Mach number. Thus  $\gamma_n \beta \ll n$ , so that to get the asymptotic behavior at large  $n$  of  $J_n(\gamma_n \beta)$  we use the same formula [Eq. (A7)] as before, but the angle  $\delta$  is now a constant of the order of 1. We then deduce the asymptotic behavior of  $\Delta_n$  from expression (4.15),

$$\Delta_n = - \underbrace{\frac{H_{m-1}^1(\beta)}{H_m^1(\beta)}}_{=O(1)} + \underbrace{\frac{\gamma_n J_{|n|-1}(\beta \gamma_n)}{J_{|n|}(\beta \gamma_n)}}_{=O(n)} + \underbrace{\frac{1}{\beta} (m - |n|)}_{=O(1/n)} = O(n). \quad (\text{B1})$$

We have seen in the preceding paragraph that the convergence of  $J_m(\beta)$  is extremely fast, which ensures convergence of  $a_n$ . For  $0 \leq r' \leq 1$ , the term  $J_{|n|}(\gamma_n \beta r') / J_{|n|}(\gamma_n \beta)$  takes the maximum value at  $r' = 1$  for sufficiently large values of  $n$ . Then, the absolute convergence of sum (5.2) is guaranteed by the absolute convergence of the coefficients  $a_n$ . Since the support of  $\eta_c$  is compact, this convergence is uniform.

Rather easily, we get that the asymptotic behavior of  $c_n$  is that of  $J_m(\beta)$ , which converges very rapidly. Let us introduce

$$\beta r' \equiv m / \cosh \delta_1, \quad \beta \equiv m / \cosh \delta_2.$$

We have that  $\delta_1 < \delta_2$ , both being asymptotically of the order of  $\ln n$ . Using one more time formula (A7), and its equivalent for Neumann functions (Ref. [14], formula 8.452.2), we get

$$\frac{H_m^1(\beta r')}{H_m^1(\beta)} \sim \frac{E_1 - iF_1}{E_2 - iF_2} \sim \exp[m(\delta_1 - \delta_2)],$$

where ( $i = 1, 2$ )

$$E_i \equiv \frac{\exp(m \tanh \delta_i - m \delta_i)}{\sqrt{2\pi m \tanh \delta_i}},$$

$$F_i \equiv \frac{\exp(m \delta_i - m \tanh \delta_i)}{\sqrt{\pi m \tanh \delta_i/2}},$$

which converges exponentially fast because  $\delta_1 - \delta_2 < 0$ . We deduce that  $\eta_R$  is an absolutely converging series. However, in this case,  $r'$  takes values in an infinite interval so that the convergence is only simple.

- 
- [1] M. V. Berry, R. G. Chambers, M. D. Large, C. Upstill, and J. C. Walmsley, *Eur. J. Phys.* **1**, 154 (1980).  
 [2] E. Cerda and F. Lund, *Phys. Rev. Lett.* **70**, 3896 (1993).  
 [3] M. Umeki and F. Lund, *Fluid Dyn. Res.* **21**, 201 (1997).

- [4] A. L. Fabrikant and M. A. Raevsky, *J. Fluid Mech.* **262**, 141 (1994).  
 [5] B. Dernoncourt, J.-F. Pinton, and S. Fauve, *Physica D* **117**, 181 (1998); M. Oljaca, X. Gu, A. Glezer, M. Baffico, and F.

- Lund, Phys. Fluids **10**, 886 (1998); A. Petrossian and J.-F. Pinton, J. Phys. II **7**, 1 (1997); J. F. Pinton, C. Laroche, S. Fauve, and C. Baudet, *ibid.* **3**, 3 (1993); C. Baudet, S. Ciliberto, and J. F. Pinton, Phys. Rev. Lett. **67**, 193 (1991); H. Contreras and F. Lund, Phys. Lett. A **149**, 127 (1990); F. Lund and C. Rojas, Physica D **37**, 508 (1989); M. S. Howe, J. Sound Vib. **87**, 567 (1983); T. Kambe, J. Japan Soc. Fluid Mech. **1**, 149 (1982) (in Japanese); P. R. Gromov, A. B. Ezerskii, and A. L. Fabrikant, Akust. Zh. **28**, 763 (1982) [Sov. Phys. Acoust. **28**, 452 (1982)]; T. Kambe and U. Mya-Oo, J. Phys. Soc. Jpn. **50**, 3507 (1981).
- [6] An exception is the calculation of A. L. Fetter, Phys. Rev. **136**, A1488 (1964), for the scattering of sound by a vortex in the long wavelength approximation. In that paper, long wavelength means both  $\lambda \gg a$  and  $\lambda \gg \Gamma/c$ . The present paper considers the case (see text)  $\lambda \ll a$ ,  $\lambda \sim \Gamma/c$ .
- [7] R. Labbé and J. F. Pinton, Phys. Rev. Lett. **81**, 1413 (1998); P. Roux and M. Fink, Europhys. Lett. **32**, 25 (1995); P. Roux, J. de Rosny, M. Tanter, and M. Fink, Phys. Rev. Lett. **79**, 3170 (1997); see also F. Vivanco, F. Melo, C. Coste, and F. Lund (unpublished).
- [8] C. Coste and F. Lund, following paper, Phys. Rev. E **60**, 4917 (1999).
- [9] G. B. Whitham, *Linear and Nonlinear Waves* (Wiley, New York, 1974).
- [10] See T. Colonius, S. K. Lele, and P. Moin, J. Fluid Mech. **260**, 271 (1994), for a treatment of this short wavelength limit using ray-tracing methods.
- [11] Y. Aharonov and D. Bohm, Phys. Rev. **115**, 485 (1959); for recent discussions, see R. M. Herman, Found. Phys. **22**, 713 (1992); L. O’Raifeartaigh, N. Strautman, and A. Wipf, Comments Nucl. Part. Phys. **20**, 15 (1991).
- [12] In this case, the restriction  $u \ll U$  imposed in Sec. II will break down when  $r$  is very small or very large. At those points, however, the condition  $u \ll c$ , implicit in the derivation of Eq. (2.7), assures that nonlinear terms can still be neglected.
- [13] I. S. Gradshteyn and I. M. Ryzhik, *Table of Integrals, Series, and Products* (Academic, New York, 1980).
- [14] As noted in [1], there is no singularity in the forward direction. For a more recent discussion within a Born approximation framework, see P. V. Sakov, Akust. Zh. **39**, 537 (1993) [Acoust. Phys. **39**, 280 (1993)]; R. Berthet and F. Lund, Phys. Fluids **7**, 2522 (1995).
- [15] F. Vivanco, F. Melo, C. Coste, and F. Lund, Phys. Rev. Lett. (to be published).
- [16] R. Berthet (unpublished).
- [17] S. Wolfram, *The Mathematica Book*, 3rd ed. (Cambridge University Press, Cambridge, 1996).