



An autocrine ActivinB mechanism drives TGF β /Activin signaling in Group 3 medulloblastoma

Morgane Morabito, Magalie Larcher, Florence M G Cavalli, Chloé Foray, Antoine Forget, Liliana Mirabal-ortega, Mamy Andrianteranagna, Sabine Druillennec, Alexandra Garancher, Julien Masliah-planchon, et al.

► To cite this version:

Morgane Morabito, Magalie Larcher, Florence M G Cavalli, Chloé Foray, Antoine Forget, et al.. An autocrine ActivinB mechanism drives TGF β /Activin signaling in Group 3 medulloblastoma. EMBO Molecular Medicine, 2019, 6, pp.e9830. 10.15252/emmm.201809830 . hal-02347105

HAL Id: hal-02347105

<https://hal.science/hal-02347105>

Submitted on 5 Nov 2019

HAL is a multi-disciplinary open access archive for the deposit and dissemination of scientific research documents, whether they are published or not. The documents may come from teaching and research institutions in France or abroad, or from public or private research centers.

L'archive ouverte pluridisciplinaire **HAL**, est destinée au dépôt et à la diffusion de documents scientifiques de niveau recherche, publiés ou non, émanant des établissements d'enseignement et de recherche français ou étrangers, des laboratoires publics ou privés.

An autocrine ActivinB mechanism drives TGF β /Activin signaling in Group 3 medulloblastoma

Morgane Morabito^{1,2,3,4,5}, Magalie Larcher^{1,2,3,4,5}, Florence MG Cavalli^{6,7}, Chloé Foray^{1,2,3,4,5}, Antoine Forget^{1,2,3,4,5}, Liliana Mirabal-Ortega^{1,2,3,4,5}, Mamy Andrianteranagna^{5,8,9,10,11,12,13}, Sabine Druillennec^{1,2,3,4,5}, Alexandra Garancher^{1,2,3,4,5}, Julien Masliah-Planchon^{5,8,9,11}, Sophie Leboucher^{1,4}, Abel Debalkew^{6,7}, Alessandro Raso¹⁴, Olivier Delattre^{5,8,9,11}, Stéphanie Puget^{15,16}, François Doz^{8,11,15}, Michael D Taylor^{6,7,17,18}, Olivier Ayrault^{1,2,3,4,5}, Franck Bourdeaut^{5,8,9,10,11}, Alain Eychène^{1,2,3,4,5}  & Celio Pouponnot^{1,2,3,4,5,*} 

Abstract

Medulloblastoma (MB) is a pediatric tumor of the cerebellum divided into four groups. Group 3 is of bad prognosis and remains poorly characterized. While the current treatment involving surgery, radiotherapy, and chemotherapy often fails, no alternative therapy is yet available. Few recurrent genomic alterations that can be therapeutically targeted have been identified. Amplifications of receptors of the TGF β /Activin pathway occur at very low frequency in Group 3 MB. However, neither their functional relevance nor activation of the downstream signaling pathway has been studied. We showed that this pathway is activated in Group 3 MB with some samples showing a very strong activation. Beside genetic alterations, we demonstrated that an ActivinB autocrine stimulation is responsible for pathway activation in a subset of Group 3 MB characterized by high PMEPA1 levels. Importantly, Galunisertib, a kinase inhibitor of the cognate receptors currently tested in clinical trials for Glioblastoma patients, showed efficacy on orthotopically grafted MB-PDX. Our data demonstrate that the TGF β /Activin pathway is active in a subset of Group 3 MB and can be therapeutically targeted.

Keywords activin; medulloblastoma; Smad2; Smad3; TGFbeta

Subject Category Cancer

DOI 10.15252/emmm.201809830 | Received 19 September 2018 | Revised 28 June 2019 | Accepted 2 July 2019

EMBO Mol Med (2019) e9830

Introduction

Medulloblastoma (MB), a cerebellar tumor, is one of the most common malignant brain tumors in children (Holgado *et al*, 2017; Wang *et al*, 2018). Current therapy associates surgery, chemotherapy, and radiotherapy. This aggressive regimen allowed an increase in the overall survival rate up to 70–80% but induces dramatic long-term side effects (Martin *et al*, 2014). In addition, the overall survival rate of high-risk patients is far below (Holgado *et al*, 2017; Wang *et al*, 2018). It is therefore crucial to identify new treatments that decrease side effects and improve efficacy.

Genomic and transcriptomic approaches allowed the stratification of MB patients into 4 different molecular groups: WNT (Wingless), SHH (Sonic Hedgehog), Group 3, and Group 4 (Northcott *et al*, 2012a; Taylor *et al*, 2012). These groups display differences in

- 1 Institut Curie, Orsay, France
 - 2 INSERM U1021, Centre Universitaire, Orsay, France
 - 3 CNRS UMR 3347, Centre Universitaire, Orsay, France
 - 4 University Paris Sud – Paris-Saclay, Orsay, France
 - 5 PSL Research University, Paris, France
 - 6 The Arthur and Sonia Labatt Brain Tumour Research Center, The Hospital for Sick Children, Toronto, ON, Canada
 - 7 Developmental and Stem Cell Biology Program, The Hospital for Sick Children, Toronto, ON, Canada
 - 8 Institut Curie, Paris, France
 - 9 INSERM U830, Paris, France
 - 10 Translational Research in Pediatric Oncology, Institut Curie SiRIC, Paris, France
 - 11 SIREDO Center (Care, innovation, Research in pediatric, adolescent and young adult oncology), Institut Curie, Paris, France
 - 12 INSERM, U900, Paris, France
 - 13 MINES ParisTech, CBIO-Centre for Computational Biology, Paris, France
 - 14 Department of Pathology, ASL 3 Genovese, SC Laboratorio d'Analisi, Genova, Italy
 - 15 Université Paris Descartes, Sorbonne Paris Cité, Paris, France
 - 16 Département Neurochirurgie Pédiatrique, AP-HP, Hôpital Necker-Enfants Malades, Paris, France
 - 17 Department of Laboratory Medicine and Pathobiology, University of Toronto, Toronto, ON, Canada
 - 18 Division of Neurosurgery, The Hospital for Sick Children, Toronto, ON, Canada
- *Corresponding author. Tel: +33 1 69 86 30 79; Fax: +33 1 69 86 30 51; E-mail: celio.pouponnot@curie.fr

terms of cell of origin, transcriptional, epigenetic, and mutational signatures. They also differ in their clinical characteristics such as histology, overall survival rate, and presence of metastases. Recently, intragroup heterogeneity has been further uncovered, allowing their division into subtypes with some specific clinical parameters as well as genomic alterations (Cavalli *et al*, 2017a; Northcott *et al*, 2017; Schwalbe *et al*, 2017). Although the existence of subdivisions within the different groups is clear, the outlines of the different subtypes have not completely reached a consensus so far. The WNT group represents 10% of all MBs and is driven by constitutive activation of the WNT/ β -catenin pathway with patients showing the best prognosis. The SHH group accounts for 20–25% of MB and is characterized by mutations involving different mediators of the SHH pathway. It is considered of intermediate prognosis. However, recent sub-classifications identified SHH subtypes with poorer outcomes (Cavalli *et al*, 2017a; Schwalbe *et al*, 2017). On the other side, Group 3 and Group 4 are far less characterized due to their genetic and clinical heterogeneity. They display some degrees of overlap with a few samples (~10%) being difficult to specifically assign to either Group. They share some clinical characteristics, such as a high propensity to metastasis and genetic alterations such as *OTX2* amplifications or *KBTBD4* mutations (Northcott *et al*, 2017). In contrast to SHH and WNT groups, no deregulation of a given signaling pathway has been yet reported. Group 4 represents 35–40% of all MB patients and shows, in few cases, *MYCN* and *CDK6* amplifications and *KDM6A* mutations. Recently, it has been shown that genomic alterations involving enhancer hijacking induce *PRDM6* overexpression in 15–20% of Group 4 (Northcott *et al*, 2017). Group 3 represents 20–25% of MB patients and is associated with bad prognosis. This group is highly metastatic and characterized by *MYC* overexpression, which can be explained in 15–20% of cases by its amplification. However, *MYC* overexpression is not sufficient to induce Group 3 MB and requires additional cooperating oncogenic events (Kawauchi *et al*, 2012; Pei *et al*, 2012). Some of them have been identified, such as *GFI1* and *GFI1B* that are highly expressed in a subset of Group 3 through enhancer hijacking (Northcott *et al*, 2014). These transcription factors have been demonstrated to drive Group 3 MB tumorigenesis in animal models when associated with *MYC* overexpression (Northcott *et al*, 2014). At the transcriptomic level, Group 3 is characterized by the expression of a photoreceptor program defined by genes whose expression is highly restricted to the retina (Kool *et al*, 2008; Cho *et al*, 2011). We recently uncovered that this program defines a subtype within Group 3 tumors, which exhibits a functional dependency to this ectopic program through its two main drivers, the retina-specific transcription factors *NRL* and *CRX* (Garancher *et al*, 2018). Thus, Group 3 can be subdivided into 2–3 different subtypes according to the different studies (Cavalli *et al*, 2017a; Northcott *et al*, 2017; Schwalbe *et al*, 2017). Cavalli *et al* (2017a) have identified 3 subtypes, one is composed of tumors with high *MYC* expression including those with amplification of this gene, named G3 γ . This subtype has the worse prognosis. The second subtype, G3 β , is over-represented by tumors with *GFI1* alterations, and the last one G3 α , by tumors expressing photoreceptor genes in which few amplifications of mediators of the TGF β /Activin pathway can be found (Cavalli *et al*, 2017a). Since Group 3 displays the worse prognosis, targeted therapies are actively searched. Different actionable targets have been proposed mainly based on genomic data, including the

TGF β signaling, which has been suggested to be deregulated in few Group 3 MB, although no functional data have been reported so far. A study on structural genomic variations across over 1,000 MB has first described few amplifications of different mediators of the TGF β /Activin pathway in Group 3 MB (Northcott *et al*, 2012b). They include *ACVR2A* and *ACVR2B*, two type II receptors for Activin, as well as *TGFBR1*, a type I receptor for TGF β , highlighting a potential deregulation of Smad2/3 signaling (see below). Additionally, since *OTX2* has been demonstrated to be a target gene of this signaling pathway (Jia *et al*, 2009), it has been proposed that *OTX2* amplifications could represent a mechanism by which the pathway is also deregulated downstream (Northcott *et al*, 2012b). The putative significance of this signaling pathway in Group 3 was reinforced by two subsequent studies, one involving sequencing in a large cohort of MB (Northcott *et al*, 2017) and the other showing that several components of this signaling pathway could also be deregulated at their expression level, through Group 3-specific enhancers (Lin *et al*, 2016). Although these studies might indicate a potential deregulation of the Smad2/3 signaling pathway, this could account for only a modest proportion of Group 3 tumors.

The TGF β superfamily is a large family of cytokines divided into two distinct groups of ligands: the TGF β s/Activins and the BMPs. TGF β /Activin ligands signal through Smad2/3. These ligands bring together two types of serine/threonine kinase receptors, the type I and the type II, which are specific for a set of ligands. The TGF β s (TGF β 1, TGF β 2, and TGF β 3) signal through the TGFBR1 type I and TGFBR2 type II receptors. Activin, encoded by 4 different genes, *INHBA*, *INHBB*, *INHBC*, and *INHBE*, can activate different couples of receptors including the *ACVR2A* and *ACVR2B* type II and *ACVR1A* (ALK4) and *ACVR1C* (ALK7) type I receptors. *INHHA*, encoding inhibin- α , is an inhibitor of the Activin ligands. Activin and TGF β ligands lead to the phosphorylation and activation of the same intracellular mediators, Smad2 and Smad3, which then associate with the co-Smad, Smad4. The hetero-complex translocates to the nucleus, where it activates the transcription of target genes with the help of DNA binding partners (Levy & Hill, 2006; Ross & Hill, 2008).

TGF β /Activin signaling displays pleiotropic functions depending on the cellular and environmental context. Its implication in cancer has been well documented, mainly through TGF β ligands, although BMPs and Activins ligands can be also involved (Seoane & Gomis, 2017). The role of the TGF β signaling pathway in cancer is complex, acting either as a tumor suppressor pathway in some instances or as a tumor promoter in others (Massagué, 2008; Seoane & Gomis, 2017). Its oncogenic role is mainly associated with an autocrine (or paracrine) stimulation, due to the strong expression of TGF β ligands. The TGF β pathway has been shown to promote cell proliferation in specific context such as in Glioblastoma (Bruna *et al*, 2007) and cancer stem cell maintenance (Peñuelas *et al*, 2009; Anido *et al*, 2010; Lonardo *et al*, 2011). Studies on the role of Activin ligands in cancer are much more scarce (Wakefield & Hill, 2013). By activating the same mediators Smad2/3, a parallel can be drawn between TGF β and Activin. Indeed, Activins act both as tumor suppressors and tumor promoters (Chen *et al*, 2002; Antsiferova & Werner, 2012; Marino *et al*, 2013; Wakefield & Hill, 2013). Their pro-tumorigenic role has been validated in animal models in which deletion of the activin inhibitor, *INHA*, led to gonadal tumors in mice as well as cachexia-like syndrome (Matzuk *et al*, 1994; Vassalli *et al*, 1994). ActivinB has also been shown to play a role in

cancer stem cell maintenance (Lonardo *et al*, 2011) and in cell dedifferentiation in an insulinoma mouse model and deletion of *INHBB* encoding ActivinB increases survival (Ripoche *et al*, 2015).

Several observations pinpoint to a potential role of the Smad2/3 signaling pathway in Group 3 MB but no published data have confirmed the deregulation of this signaling pathway, nor its functional involvement in Group 3 biology. In this study, we investigated these aspects to bring the proof of principle that this signaling pathway represents an interesting therapeutic target in MB and to identify patients that could be eligible to such therapy.

Results

TGF β /ActivinB signaling pathway is active in Group 3 MB

Since different genomic alterations in the TGF β /Activin pathway have been previously described in Group 3 MB (Northcott *et al*, 2012b, 2017; Lin *et al*, 2016), we first investigated whether the pathway is activated in patient samples. We performed WB analysis on 38 medulloblastomas: 7 WNT, 12 SHH, 10 Group 3, and 9 Group 4 tumors. Activation of the pathway, monitored by the level of Smad2 phosphorylation (P-Smad2), was observed in some patient samples from all MB groups (Fig 1A). An inter-tumor heterogeneity was observed in each group, with some samples with high P-Smad2. However, an overall higher level of Smad2 phosphorylation was observed in Group 3 when normalized to β -actin (Fig EV1A, left panel). This was not evidenced when normalized to total Smad2 (Fig EV1A, right panel) since an important variation of Smad2 level was observed (Fig 1A). This is in line with the modification of Smad2 stability by auto-regulatory mechanisms (Yan *et al*, 2018). Thus, the overall level of P-Smad2/ β -actin, which formally reflects the level of nuclear and active Smad2, led us to conclude that TGF β /Activin pathway is activated in some Group 3 patients.

Considering that amplifications of receptors of the pathway have been described in less than 10% of Group 3 tumors (Northcott *et al*, 2012b), we hypothesized that other mechanisms may account for pathway activation in several G3 samples. Activation of the Smad2/3 pathway in cancer is frequently due to autocrine/paracrine activation by TGF β ligands (Rodón *et al*, 2014). Therefore, we analyzed the expression of major mediators of the TGF β /Activin pathway, including ligands and receptors in previously published MB dataset at the mRNA (Data ref: Cavalli *et al*, 2017b) and protein (Data ref: Archer *et al*, 2018b) levels. No major difference in the expression of the different receptors was observed between the different groups (Fig EV1B and C). In contrast, striking differences were observed for the ligands. For example, *TGFB2* was found highly expressed in SHH tumors (Fig EV1B and C and Appendix Table S1). We observed higher expression levels of *TGFB1*, *TGFB3*, and *INHBB* (encoding ActivinB) in Group 3 in comparison with the other ones although expression of *TGFB3* is similar between Group 3 and Group 4 (Fig 1B). These results were confirmed at the protein level (Fig EV1C). These data were compatible with an autocrine activation of the pathway by one of those ligands listed above in Group 3 MB.

We next investigated the activation of TGF β /Activin pathway in MB cell lines. We analyzed the level of P-Smad2 in four well-established Group 3 MB cell lines (HDMB03, D458, 1603MED, and D283)

as well as in three cell lines classified as non-Group 3 (DAOY, ONS76, and UW228). Western Blot (WB) analyses showed higher basal intensity of P-Smad2 signal in Group 3 cell lines (Fig 1C), confirming that the pathway is activated in this group. As in patient samples, we observed heterogeneity in the activation of the pathway, with a very strong basal level of pathway activation being observed in the 1603MED cell line while in some cell lines its level was modest.

To understand what drives the basal activation of the pathway in Group 3 cell lines, we investigated the expression level of different ligands and receptors of the pathway by RT-qPCR (Figs 1D and EV1D). No marked difference in the expression of the receptors was found between Group 3 and non-Group 3 cell lines, except a higher expression of *ACVR1B*, *ACVR2A*, and *ACVR2B* (Fig EV1D and Appendix Table S2) and a lower expression of *TGFB2*, an obligatory partner for *TGFB1*, in Group 3 cell lines. We did not observe any direct correspondence between the expression of the different receptors and the level of activation of the pathway in the different Group 3 cell lines (i.e., level of P-Smad2 in Fig 1C), suggesting that pathway activation is not directly linked to the deregulation of receptors expression. We investigated the expression of different ligands (Figs 1D and EV1D) and found a higher expression of *INHBB* in the 1603MED and D283 Group 3 cell lines as compared to the others (Fig 1D and Appendix Table S2). Interestingly, this level of expression directly corresponded to that of P-Smad2 levels, strong in 1603MED to intermediate in D283. This suggested that the ActivinB, encoded by *INHBB*, could be the major driver of Smad2/Smad3 phosphorylation in this group. The same observation could be drawn for *TGFB3* in 1603MED and to a lesser extent in D283, while genes encoding the other ligands were not overexpressed in the cell lines showing a high level of P-Smad2 (Fig EV1D). Taken together, these results suggested the potential existence of an autocrine mechanism involving either *TGFB3* or *INHBB* that could be responsible for TGF β /Activin signaling activation in Group 3 MB.

An autocrine stimulation involving ActivinB

To further investigate the presence of a potential autocrine mechanism, we first analyzed the ability of cell lines to respond to exogenous stimulation by either TGF β or Activin ligands, each requiring different sets of receptors. Non-Group 3 cell lines showed an increase in P-Smad2 signals in response to TGF β stimulation, while no modulation was observed upon Activin stimulation (Fig 2A, left in blue). Strikingly, Group 3 MB cell lines showed the complete opposite profile: P-Smad2 signal was increased upon Activin stimulation, while it remained unchanged upon TGF β stimulation (Fig 2A, right in yellow). Noteworthy, 1603MED displayed a very high basal level of P-Smad2 which is constitutive. The reason for which G3 cell lines respond to Activin but not to TGF β is currently unknown. However, we noticed a lower level of *TGFB2* in these cells, a receptor required for TGF β response (Fig EV1D). This was also observed in G3 tumor samples at the RNA and protein level (Fig EV1B and C). These opposite responses suggested a ligand-specific response between MB subgroups with Group 3 MB cell lines being able to respond to Activin but not to TGF β , thereby excluding TGF β ligands as a potential autocrine source for Smad2 activation. Since Group 3 cell lines displayed concomitant pathway activation and *INHBB* expression, these results strongly suggested that an

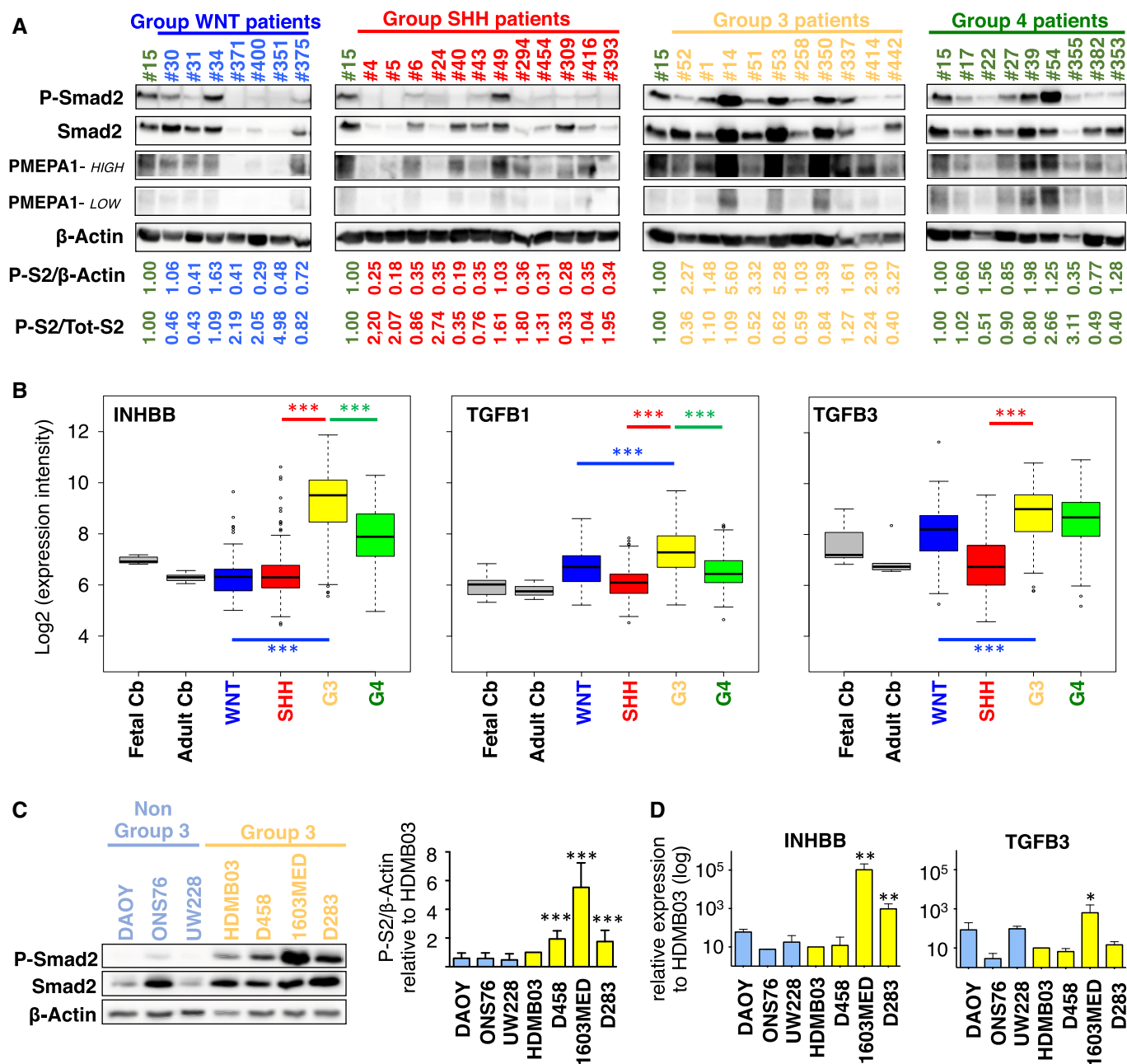


Figure 1. TGF β /ActivinB pathway is activated in Group 3 MB patients and cell lines.

A Immunoblot analysis of phosphorylated Smad2 (P-Smad2) and PMEPA1 (high and low exposures displayed) in MB patient sample lysates from different groups: WNT (blue), SHH (red), Group 3 (yellow), or Group 4 (green). β -Actin was used as a loading control. Relative quantification of P-Smad2 signal to β -actin (P-S2/ β -Actin) and total Smad2 (P-S2/Tot-S2) are indicated below the blots.

B Boxplots summarizing the expression of *INHBB*, *TGFB1*, and *TGFB3* ligands of the TGF β /Activin pathway in the different groups of MB (blue WNT, red SHH, yellow Group 3, and green Group 4) and in fetal and adult cerebellum (gray) in the dataset of Cavalli et al (Data ref: Cavalli et al, 2017b).

C Immunoblot analysis of phosphorylated Smad2 (P-Smad2) in non-Group 3 (blue) and Group 3 (yellow) MB cell lines on the left panel. The level of total Smad2 (Smad2) was assessed, and β -actin was used as a loading control. On the right panel, relative level of P-Smad2 (P-S2) was quantified to total β -actin. P-Smad2 to total Smad2 normalization is also provided on Appendix Fig S5.

D RT-qPCR was performed on RNA extracted from non-Group 3 (blue) and Group 3 (yellow) MB cell lines to compare expression levels of *INHBB* (left) and *TGFB3* (right).

Data information: Wilcoxon rank-sum tests were performed to determine *P*-values for panel (B). Boxplot center lines show data median; box limits indicate the 25th and 75th percentiles; lower and upper whiskers extend 1.5 times the interquartile range (IQR) from the 25th and 75th percentiles, respectively. Outliers are represented by individual points (B). The remaining *P*-values were determined by unpaired *t*-test. **P* < 0.05, ***P* < 0.01, ****P* < 0.001, *****P* < 0.0001. Bars represent the mean \pm SD. Number of replicates is *n* \geq 3. The exact *P*-values and number of replicates are indicated in Appendix Table S5. Detailed statistics are presented in Appendix Table S1 for panel (B) and Appendix Table S2 for panel (D).

Source data are available online for this figure.

ActivinB (encoded by *INHBB*) autocrine stimulation could be responsible for the activation of the pathway in the 1603MED and D283 Group 3 cell lines. To further investigate the potential role of ActivinB in the basal Smad2 activation in these cell lines, we focused on the 1603MED cell line, which shows the strongest basal activation. Treatment of 1603MED cells with an ActivinB blocking antibody induced a decrease in P-Smad2 level (Fig 2B). Importantly, the specificity of this antibody toward ActivinB was verified by showing that it does not block TGF β stimulation (Appendix Fig S1). These experiments supported that an autocrine ActivinB production induced, at least partially, a strong activation of the pathway in 1603MED. This was further supported by P-Smad2 inhibition upon treatment with follistatin, a ligand trap for Activins (Fig 2B). We next sought to directly demonstrate that 1603MED cells secrete ActivinB. HDMB03 cells were used as receiving cells to conditioned media, since they showed the lowest basal activation of the pathway among G3 cell lines (Fig 1C) but efficiently responded to exogenous ActivinB and not to TGF β stimulation (Fig 2A). Three culture media were tested as follows: a non-conditioned media that had never been in contact with any cells, an HDMB03-conditioned media, both of them being used as negative controls, and a 1603MED conditioned media. HDMB03 cells were treated with these different media for 1 h, and the effect on the Smad2 pathway was tested by WB (Fig 2C). 1603MED conditioned media induced a strong P-Smad2 signal as compared to the two control media. This induction was prevented by incubation with an ActivinB blocking antibody (Fig 2C), strongly supporting that 1603MED secreted active ActivinB ligand. To further substantiate this hypothesis, we targeted *INHBB* expression by siRNA in 1603MED. Although expression of *INHBB* was reduced to only 40% (Fig 2D), we nonetheless observed a decrease in P-Smad2 level (Fig 2E) resulting in decreased cell growth (Fig 2F). All these effects were rescued by exogenous addition of ActivinB (Fig EV2). Altogether, these results strongly support an autocrine secretion of ActivinB by 1603MED cells leading to P-Smad2 activation and promoting 1603MED cell proliferation.

ActivinB stimulation promotes proliferation

We next investigated the role of Activin pathway activation in Group 3 MB cell lines. D458 (Fig 3A–D) and D283 (Fig 3E–H) cells, which showed intermediate basal activation of the pathway (Fig 1C), were stimulated with ActivinB (Fig 3). Activation of the pathway was validated by monitoring P-Smad2 levels (Fig 3A and E). Incucyte Proliferation Assay revealed an increase in cell proliferation upon ActivinB stimulation in both cell lines (Fig 3B and F). It remains to be determined why ActivinB did not promote cell growth while activating the pathway in HDMB03 (Appendix Fig S2). An increase in cell proliferation can result from faster cell cycle progression, a reduction in cell death, or both. We analyzed the cell cycle profile by BrdU incorporation and 7AAD labeling and observed an increase in the number of cells in S phase following ActivinB stimulation, concomitant with a decrease in G0/G1 (Fig 3C and G). Apoptosis was monitored by FACS analysis of cleaved caspase-3 staining. We did not detect consistent effects on apoptosis, with a slight decrease in D458 cell line following stimulation after 2 days (Fig 3D), while no changes were detected in D283 (Fig 3H). These results indicated that ActivinB stimulates cell proliferation in Group 3 cell lines mainly by promoting cell cycle progression.

Inhibition of the pathway decreases proliferation

We next investigated the consequences of pharmacological inhibition of the pathway in Group 3 MB cell lines (Fig 4). One Group 3 cell line that exhibits a very high basal activation of the pathway (1603MED, Fig 4A–D) and one with an intermediate level (D283, Fig 4E–H) were treated with LY364947 or SB431542. These compounds prevent the phosphorylation of Smad2/3 by the TGF β and Activin type I receptors. Indeed, we verified that they prevent TGF β - as well as ActivinB-induced P-Smad2 (Appendix Fig S1). After 24 h of treatment, the level of P-Smad2 was decreased in 1603MED and D283 cell lines (Fig 4A and E, respectively). This pathway inactivation was accompanied by a decrease in cell proliferation (Fig 4B and F). FACS analyses were performed to measure BrdU incorporation and 7AAD labeling. Treatment with inhibitors induced a decrease in the percentage of cells in S phase concomitant with an increase in G0/G1 (Fig 4C and G). A very slight increase in the percentage of cells positive for cleaved caspase-3 staining was also observed (Fig 4D and H), showing that the inhibition of the pathway mainly impacted on cell cycle and to a much lesser extent on apoptosis.

PMEPA1 is implicated in ActivinB promotion of cell growth

To identify relevant genes downstream of Activin signaling in Group 3 MB, we sorted the top 10 genes, whose expression was correlated with *INHBB* in Group 3 patient samples (Fig 5A). *PMEPA1*, which scored as the top gene, is a well-established Smad2/3 target gene in different cell types including P19 cells stimulated by Activin (Coda *et al*, 2017). Accordingly, we found that *PMEPA1* expression level was enriched in Group 3 MB (Fig 5B) and correlated with *INHBB* expression in MB (Fig 5C). This correlation is highest in G3 as compared to the other groups (Appendix Fig S3A). Accordingly, we observed a good correspondence between P-Smad2 overall level and *PMEPA1* protein expression in patient samples by Western blot analysis (Figs 1A and 5D and E, Appendix Fig S3B). We next tested whether *PMEPA1* is also a target of the Smad2 signaling in MB by modulating pathway activation (Fig 5F). Activation of the pathway by ActivinB induced an increase in *PMEPA1* mRNA and protein levels, while its inhibition by LY364947, SB431542, blocking ActivinB antibody, or follistatin had the opposite effect in G3 cell lines (Fig 5F and Appendix Fig S3C and D). *MYC* and *OTX2* are key players in Group 3 MB and are also known as Smad2/3 target genes in other cell types (Jia *et al*, 2009; Brown *et al*, 2011; Coda *et al*, 2017). Therefore, we investigated whether their expression could be modulated by this pathway in Group 3 MB cell lines. In contrast to *PMEPA1*, no major change was observed at the mRNA (Appendix Fig S3C) and protein (Fig 5F and Appendix Fig S3D) levels upon pathway inhibition regarding *OTX2*, while a slight decrease could be observed for *MYC*. However, no significant increase in *MYC* expression was observed upon ActivinB treatment (Appendix Fig S3C). Interestingly siRNA-mediated *INHBB* knockdown decreased *PMEPA1* expression that could be rescued upon ActivinB treatment (Fig EV3A). These results suggested that *PMEPA1* is a target gene of the Activin pathway in Group 3 MB but that neither *MYC* nor *OTX2*, two important players of this group, appears to be consistently regulated by this signaling pathway although minor effects are observed on *MYC*. The role of *PMEPA1* in cancer remains unclear and is likely to be cell type specific. It has been shown to either promote or

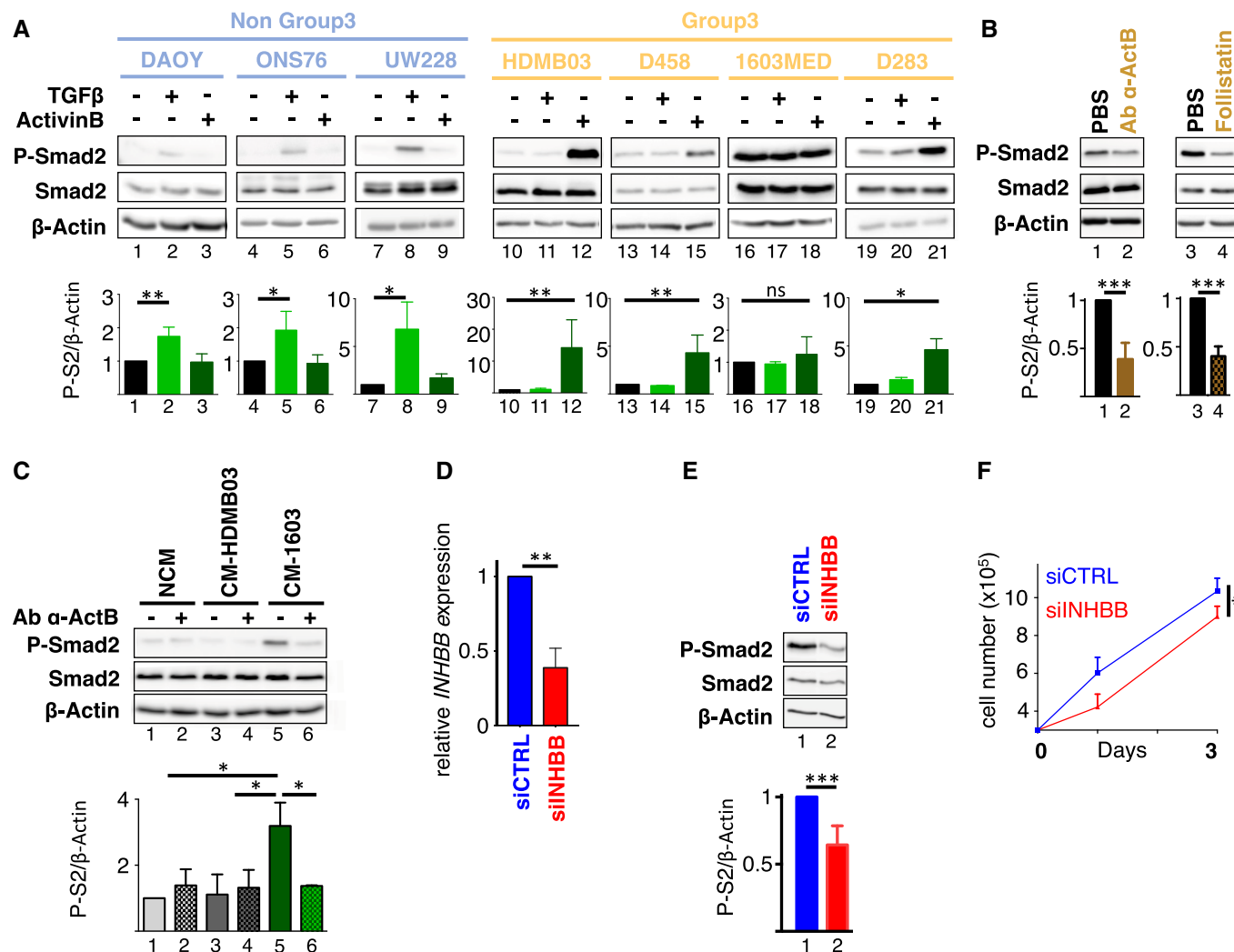


Figure 2. An autocrine stimulation by ActivinB in the 1603MED cell line.

A–C The level of phosphorylated Smad2 (P-Smad2) and total Smad2 (Smad2) was assessed by immunoblotting, and β-actin was used as a loading control. Lower bar graphs show WB quantification of P-Smad2 (P-S2) normalized to β-actin. (A) Activation of the pathway was assessed in non-Group 3 (blue) and Group 3 (yellow) MB cell lines in response to TGFβ or ActivinB stimulation for 1 h. (B) 1603MED cells were treated with PBS (vehicle) or a blocking antibody targeting ActivinB (Ab α-ActB) or follistatin. (C) Conditioned media experiments were performed on the HDMB03 MB cell line. Phosphorylation of Smad2 was analyzed by immunoblot upon treatment with either non-conditioned media (NCM), media conditioned with HDMB03 cells (CM-HDMB03), or media conditioned with 1603MED cells (CM-1603). Pre-incubation with blocking antibody against ActivinB (Ab α-ActB) or vehicle (PBS) was performed before HDMB03 cell-line treatment as indicated. Relative level of P-Smad2 (P-S2) was quantified to β-actin (below).

D RT-qPCR was performed on total RNA extracted from 1603MED cells 48 h after transfection with siRNA targeting INHBB. Relative *INHBB* expression was assessed. siCTRL condition was set at 1.

E 1603MED cells were transfected with the indicated control siRNA (siCTRL, blue) or targeting INHBB (siINHBB, red). Lysates were prepared 48 h after transfection. The level of phosphorylated Smad2 (P-Smad2) and total Smad2 (Smad2) was assessed by immunoblotting, and β-actin was used as a loading control. Lower bar graphs represent the quantification of the relative level of P-Smad2 (P-S2) to β-actin.

F Growth curve of 1603MED cells after transfection with either siCTRL (blue) or siINHBB (red).

Data information: P-Smad2 to total Smad normalization is provided on Appendix Fig S5. The *P*-values were determined by unpaired *t*-test. **P* < 0.05, ***P* < 0.01, ****P* < 0.001. Bars represent the mean ± SD. Number of replicates is *n* ≥ 3. The exact *P*-values and number of replicates are indicated in Appendix Table S5. Source data are available online for this figure.

restrain cancer progression (Liu *et al*, 2011; Fournier *et al*, 2015; Nie *et al*, 2016). Therefore, we investigated its role in Group 3 MB. siRNA-mediated PMEPA1 knockdown resulted in cell growth inhibition in both 1603MED and D283 cell lines (Figs 5G–J and EV3B–E), suggesting that PMEPA1 is an important mediator of Activin signaling-mediated proliferation in Group 3 MB.

TGFβ/ActivinB signaling pathway in Group 3 MB Patient Derived Xenografts (PDXs)

We further validated the importance of the pathway in patient derived xenograft (PDX) models, known to remain close to the original tumor (Fig 6). As observed in Group 3 patient samples and cell

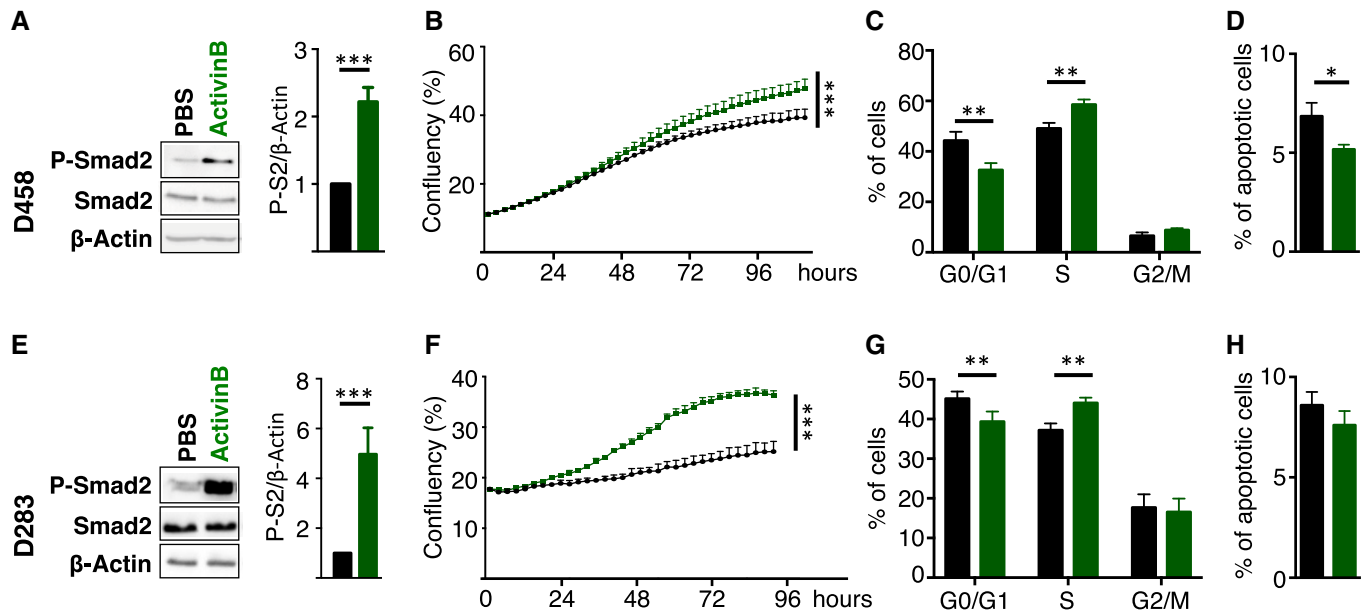


Figure 3. ActivinB promotes cell proliferation in Group 3 MB cell lines.

A–H D458 (A–D) or D283 (E–H) cell lines were treated with PBS (vehicle, black) or with ActivinB (green). (A and E) Immunoblot of phosphorylated Smad2 (P-Smad2), total Smad2, and β -actin in response to ActivinB stimulation for 24 h. Quantification of P-Smad2 (P-S2) to β -actin is shown on right panels. (B and F) P-Smad2 to total Smad normalization is provided on Appendix Fig S5. Growth curve experiments showing cell proliferation upon ActivinB treatment. (C and G) Cell cycle analysis by FACS measuring BrdU incorporation and 7AAD labeling at 48 h upon ActivinB stimulation. The percentage of cells in the different phases of the cell cycle is represented (G0/G1, S, and G2/M phases). (D and H) Percentage of apoptotic cells measured by FACS analysis of cleaved caspase-3 48 h after treatment with ActivinB. The *P*-values were determined by unpaired *t*-test and two-way ANOVA for (B and F). **P* < 0.05, ***P* < 0.01, ****P* < 0.001. Bars represent the mean \pm SD. Number of replicates is *n* \geq 3. The exact *P*-values and number of replicates are indicated in Appendix Table S5.

Source data are available online for this figure.

lines, we found heterogeneous levels of P-Smad2, from high to moderate, in the three Group 3 PDXs tested (Fig 6A). PDX4 displayed a very strong activation of the pathway, similar to that observed in the 1603MED cell line. We investigated the expression level of different mediators of the pathway by RT-qPCR (Fig 6B, Appendix Fig S4A). This analysis showed heterogeneous expression levels of *INHBB* in the 3 PDXs (Fig 6B), which tightly corresponded to the level of P-Smad2. PDX4, which showed the highest level of expression of *INHBB*, also displayed the highest P-Smad2 signal (see level of P-Smad2 in Fig 6A and *INHBB* expression in 6B). As in cell lines, Group 3 PDXs responded to Activin but not to TGF β stimulation (Fig 6C). This result supported the observations in MB cell lines, suggesting a ligand specificity toward Activin in Group 3 MB. To further investigate the possibility of an autocrine mechanism involving ActivinB, we performed conditioned media experiments as described in Fig 2C. Conditioned media from PDX4, which displays a strong activation of the pathway, markedly increased P-Smad2 phosphorylation in the receiving HDMB03 cells (Fig 6D). This induction could be partially prevented when the media was pre-incubated with an ActivinB blocking antibody (Fig 6D). Moreover, PDX4 treated with the same antibody also showed a decrease in P-Smad2 (Fig 6E, Appendix Fig S4C). P-Smad2 signal could also be inhibited following treatment with inhibitors of type I receptors and follistatin (Fig 6E). We next assessed if this signaling pathway controls *PMEPA1* expression. As in cell lines, a decrease in *PMEPA1* expression was observed in PDXs after treatment with inhibitors and increased by ActivinB treatment. The expression of *MYC* and

OTX2 remained mostly unchanged (Fig 6E, Appendix Fig S4B and C). Altogether, these results confirmed those obtained in cell lines, highlighting the presence of an autocrine stimulation involving ActivinB in Group 3 MB and identified *PMEPA1* as a gene, whose expression is controlled by this signaling pathway. We next investigated if inhibition of this pathway could be of therapeutic interest *in vivo*. The human PDX4, which displays a very high level of activation of the pathway, was orthotopically grafted into the cerebellum of nude mice. Animals were then treated 7 days per week twice a day with Galunisertib, a pharmacological inhibitor currently in clinical trial for Glioblastoma, Cisplatin as described in Niklison-Chirou *et al* (2017), or a combination. Galunisertib is described as a TGF β type I inhibitor but, since TGF β and Activin type I receptors are very similar, it also inhibits very efficiently ActivinB-induced Smad2 activation (Appendix Fig S1). Accordingly, we verified that Galunisertib recapitulated the main *in vitro* data obtained with LY364947 and SB431542 (Fig EV4A–C). Galunisertib-treated mice survived longer as compared to controls (Fig 7A), demonstrating the benefit of such treatment in tumors displaying high level of activation of the pathway. Accordingly, Galunisertib-treated mice displayed smaller tumors with less P-Smad2 (Fig 7B and C). No major difference was observed for Ki67 and cleaved caspase-3 staining (Fig EV4D and E). Although we did not observe any benefit from the combination of Galunisertib with Cisplatin (Figs 7A–C and EV4D and E), we cannot not exclude that different treatment kinetics could be more efficient. In this respect, other combinations with different drugs or radiotherapy remain to be evaluated.

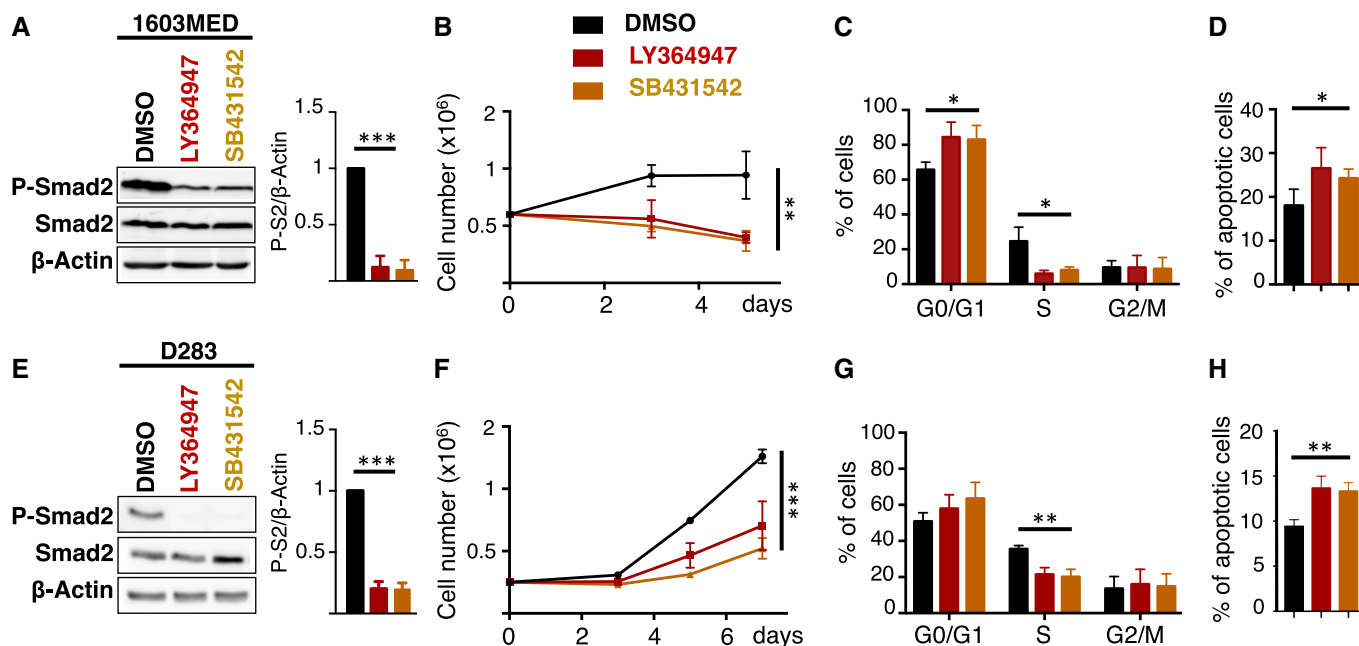


Figure 4. TGFβ/ActivinB signaling promotes cell proliferation in Group 3 MB cell lines.

A–H 1603MED (A–D) or D283 (E–H) cells were treated with DMSO (vehicle, black), with LY364947 (red), or with SB431542 (orange). (A and E) Immunoblot of phosphorylated Smad2 (P-Smad2), total Smad2, and β-actin upon inhibition of TGFβ/Activin signaling using LY364947 and SB431542 inhibitors for 24 h. Bar graphs on the right panel represent the quantification of the relative level of P-Smad2 (P-S2) to β-actin. (B and F) P-Smad2 to total Smad normalization is provided on Appendix Fig S5. Growth curve experiments showing cell proliferation upon TGFβ/Activin signaling inhibition. (C and G) Cell cycle analysis by FACS measuring BrdU incorporation and 7AAD labeling at 48 h upon inhibition. The percentage of cells in the different phases of the cell cycle is represented (G0/G1, S, and G2/M phases). (D and H) Percentage of apoptotic cells measured by FACS analysis of cleaved caspase-3 48 h after TGFβ/Activin signaling inhibition. The *P*-values were determined by unpaired *t*-test and two-way ANOVA for (B and F). **P* < 0.05, ***P* < 0.01, ****P* < 0.001. Bars represent the mean ± SD. Number of replicates is *n* ≥ 3. The exact *P*-values and number of replicates are indicated in Appendix Table S5.

Source data are available online for this figure.

TGFβ/ActivinB signaling pathway in Group 3α subtype of MB

As mentioned above, tumor samples, PDXs, and cell lines from Group 3 displayed an inter-tumoral heterogeneity regarding the level of

pathway activation, some of them showing a very strong P-Smad2 basal level. Recently, intragroup heterogeneity has been described in MB (Cavalli *et al*, 2017a; Northcott *et al*, 2017; Schwalbe *et al*, 2017) with the definition of new subtypes within Group 3 tumors. We

Figure 5. *PMEPA1* is a target gene involved in the response to Activin signaling.

- Ranking of top genes whose expression is correlated with *INHBB* in Group 3 MB patient samples. Spearman's rank correlation coefficient ρ and *P*-value are indicated.
- Boxplots representing *PMEPA1* expression levels in the different MB groups (WNT in blue, SHH in red, Group 3 in yellow, and Group 4 in green) and in fetal and adult cerebellum (gray) in the dataset of Cavalli *et al* (2017b). Only *P*-values corresponding to comparisons between Group 3 and the other groups are indicated. Full statistics can be found in Appendix Table S1.
- Scatter plot of *INHBB* and *PMEPA1* gene expression levels in all MB groups. Colored dots represent each patient samples, and colors represent the MB groups (WNT in blue, SHH in red, Group 3 in yellow, and Group 4 in green).
- Boxplot represents the quantification of *PMEPA1* protein level normalized to β-actin levels across groups.
- Scatter plot represents log2 relative protein level of P-Smad2 (x-axis) and *PMEPA1* (y-axis) normalized to β-actin in each individual samples.
- Immunoblots of phosphorylated Smad2 (P-Smad2), total Smad2, MYC, *PMEPA1*, OTX2, and β-actin were performed on extracts from 1603MED or D283 or D458 cells treated with either DMSO (vehicle), LY364947, SB431542, blocking antibody against ActivinB (Ab α-ActB), follistatin, PBS, or ActivinB (ActB) for 24 h. Blot quantification to β-actin is presented in Appendix Fig S3D.
- Immunoblot analysis of *PMEPA1* levels in 1603MED cells 48 h after transfection with either siCTRL (blue) or siPMEPA1 (red). Bar graphs on the right represent the quantification of the relative level of *PMEPA1* protein level normalized to β-actin. P-Smad2 to total Smad normalization is provided on Appendix Fig S5.
- Growth curves of 1603MED cells after transfection with either siCTRL (blue) or siPMEPA1 (red).
- Immunoblot analysis of *PMEPA1* levels in D283 cells 48 h after transfection with either siCTRL (blue) or siPMEPA1 (red). Bar graphs on the right represent the quantification of the relative level of *PMEPA1* protein level normalized to β-actin. P-Smad2 to total Smad normalization is provided on Appendix Fig S5.
- Growth curves of D283 cells after transfection with either siCTRL (blue) or siPMEPA1 (red).

Data information: The color code is the same as for (B, C, and E). Boxplot center lines show data median; box limits indicate the 25th and 75th percentiles; lower and upper whiskers extend 1.5 times the interquartile range (IQR) from the 25th and 75th percentiles, respectively (B and D). Outliers are represented by individual points (B). The *P*-values were determined by Spearman rank correlation test for (A and C), by unpaired *t*-test for (D, G and I), by two-way ANOVA for (H and J), and by Wilcoxon rank-sum test for panel (B and E). **P* < 0.05, ***P* < 0.01, ****P* < 0.001. Bars represent the mean ± SD. Number of replicates is *n* ≥ 3. The exact *P*-values and number of replicates are indicated in Appendix Table S5.

Source data are available online for this figure.

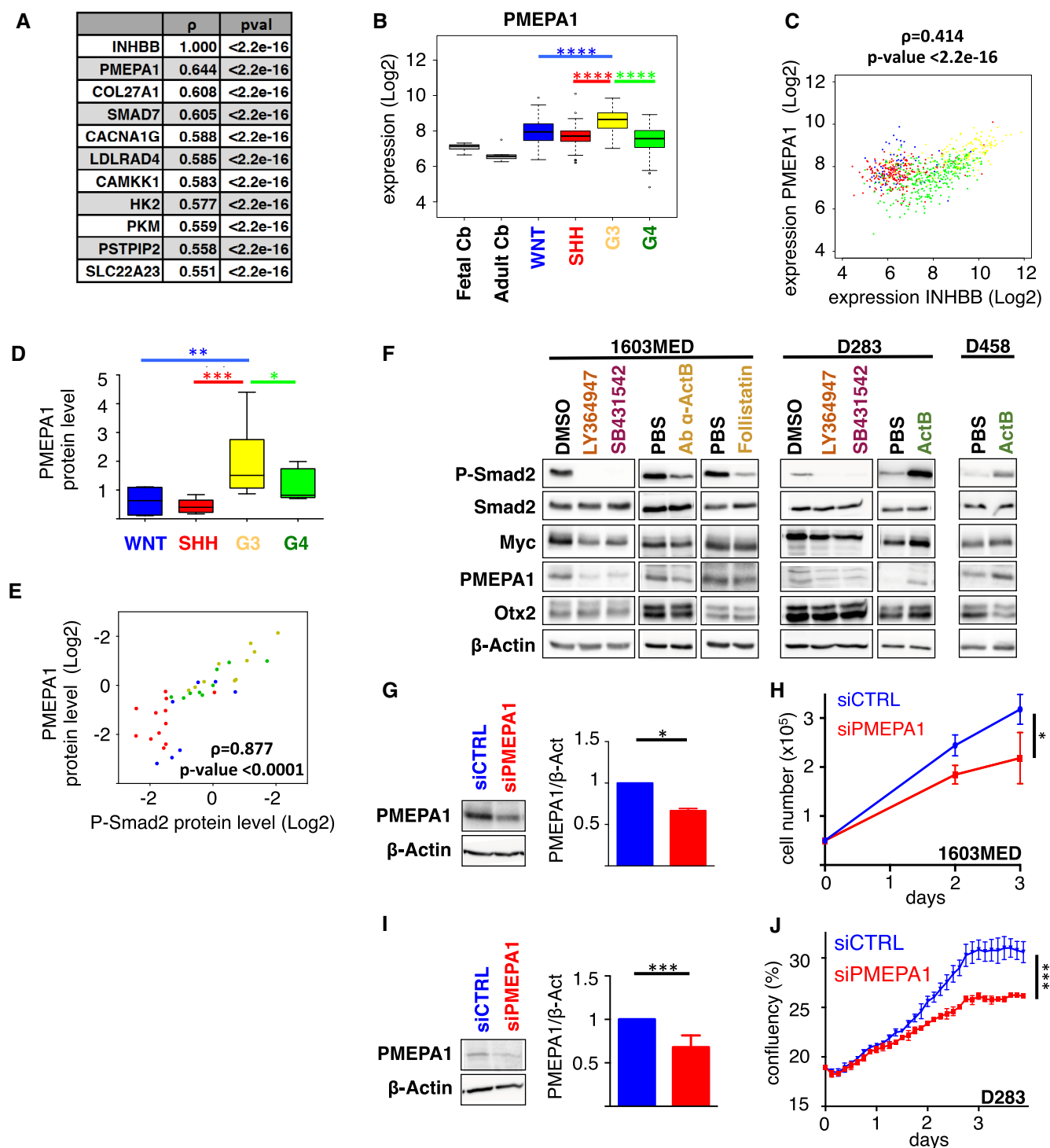


Figure 5.

wondered if this intragroup heterogeneity could explain our results. Since we showed that this strong activation was linked to an autocrine mechanism involving ActivinB, we investigated *INHBB* expression in these newly described subtypes of Group 3 tumors (Fig 7D). We found that *INHBB* displayed a significantly higher expression level in the Group 3 α subtype as compared to Group 3 β and Group 3 γ according to Cavalli *et al* (2017a) subtyping. Interestingly, *PMEPA1* displayed the same profile, and consequently, *INHBB* and

PMEPA1 expression was tightly correlated in Group 3 (Fig 7E). In contrast, *MYC* expression showed an opposite expression pattern as compared to *INHBB* (Fig 7D): Group 3 γ subtype, which is characterized by an enrichment of *MYC* amplifications, displayed the highest *MYC* expression levels, whereas the α subtype showed the lowest (Cavalli *et al*, 2017a). We recently reported that *NRL* and *CRX* control photoreceptor genes expression and define a subset of Group 3 tumors (Garancher *et al*, 2018). We found that alike *INHBB*, *NRL* is highly

expressed in the G3 α subtype (Fig 7D and Appendix Table S3). This identifies Group 3 α as the subtype that expresses high level of *INHBB* and high photoreceptor genes.

Discussion

Group 3 is the most aggressive MB group with patients showing the poorest prognosis. Several genomic alterations have been identified,

including those targeting the TGF β /Activin pathway at very low frequency. Indeed, SCNA analyses have identified uncommon gains and/or amplifications of genes encoding receptors of the TGF β /Activin pathway. Activation of the cognate Smad2/3 pathway in Group 3 tumors has never been investigated, neither its potential biological consequences nor its potential therapeutic targeting. Using patient samples, PDXs, and cell lines, we showed that, beside these infrequent genomic alterations, the TGF β /Activin pathway is also activated in a specific subtype of Group 3, through an autocrine

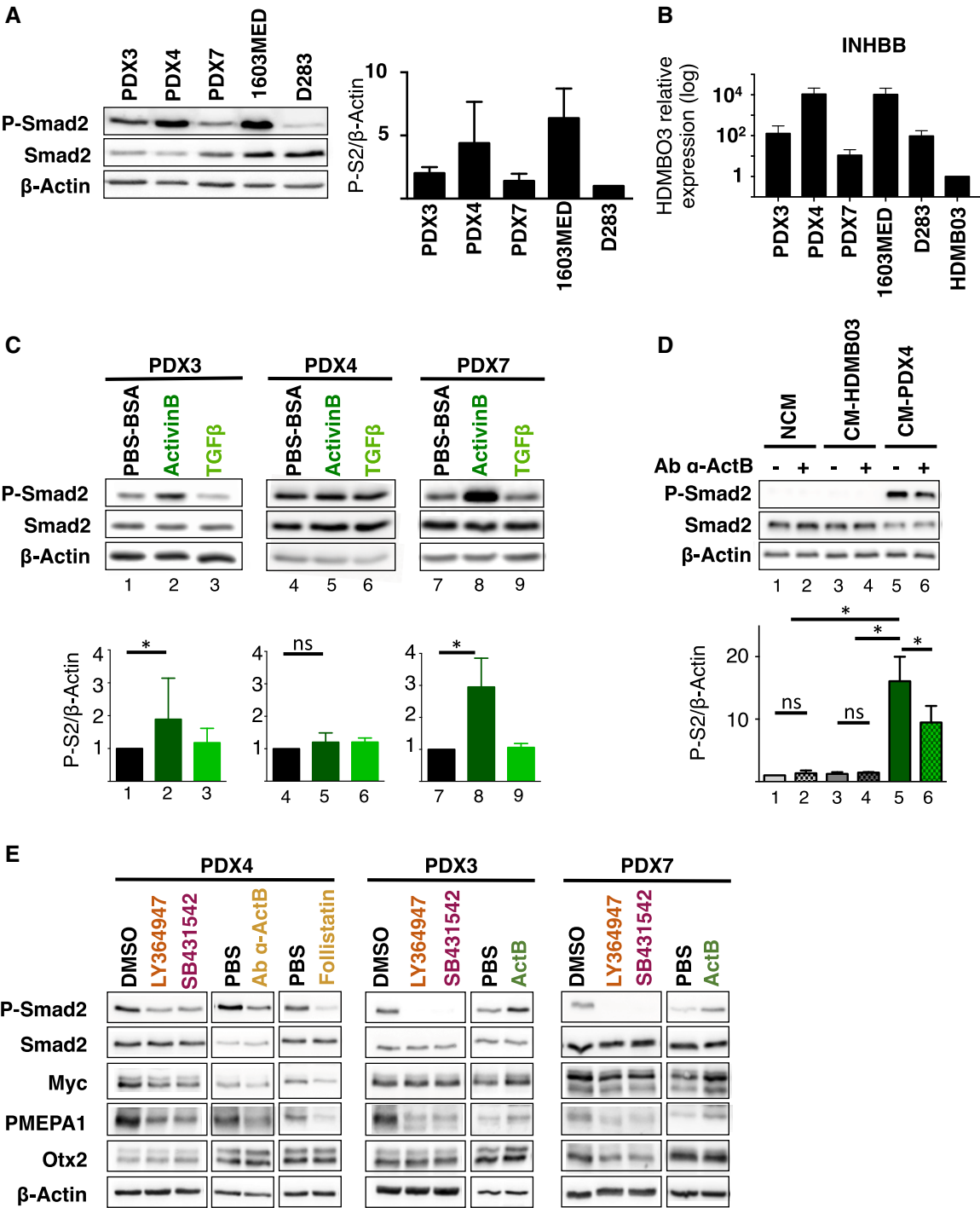


Figure 6.

Figure 6. Activated TGF β /ActivinB signaling in group 3 MB-PDXs.

- A Immunoblot analysis of phosphorylated Smad2 (P-Smad2) in Group 3 MB cell lines and PDXs. The level of total Smad2 (Smad2) was assessed, and β -actin was used as a loading control. Quantification of P-Smad2 (P-S2) to β -actin is shown on right panel.
- B Expression of *INHBB* in Group 3 MB cell lines and PDXs relative to HDMB03 (set at 1) by RT-qPCR.
- C Immunoblot of phosphorylated Smad2 (P-Smad2), total Smad2, and β -actin upon ActivinB or TGF β stimulation for 1 h. Quantification of P-Smad2 (P-S2) to β -actin is shown below.
- D Conditioned media experiments were performed on HDMB03 MB cell line. Phosphorylation of Smad2 (P-Smad2) was analyzed by immunoblot upon treatment with either non-conditioned media (NCM), media conditioned with HDMB03 cells (CM-HDMB03), or media conditioned on PDX4 cells (CM-PDX4). Pre-incubation with blocking antibody against ActivinB (Ab α -ActB) or with vehicle was performed before HDMB03 cell-line treatment as indicated. Quantification of P-Smad2 (P-S2) to β -actin is shown below.
- E Immunoblots of phosphorylated Smad2 (P-Smad2), total Smad2, MYC, PMPA1, OTX2, and β -actin were performed on extracts from cell cultures of PDX4, PDX3, and PDX7 treated with either DMSO (vehicle), LY364947, SB431542, blocking antibody against ActivinB (Ab α -ActB), follistatin, PBS, or ActivinB for 24 h. WB quantification is depicted in Appendix Fig S4C.

Data information: P-Smad2 to total Smad normalization is provided on Appendix Fig S5. The *P*-values were determined by unpaired *t*-test. **P* < 0.05. Detailed statistics are presented in Appendix Table S2 for panel (B). Bars represent the mean \pm SD. Number of replicates is *n* \geq 3. The exact *P*-values and number of replicates are indicated in Appendix Table S5.

Source data are available online for this figure.

mechanism involving ActivinB. This pathway is involved in MB growth and represents an interesting therapeutic target.

ActivinB mediates Smad2/3 signaling in Group 3 MB

While activation of the TGF β /Activin pathway has been described in SHH group, no data are currently available regarding its activation in Group 3. A recent report showed that Prune-1 may activate the TGF β pathway in Group 3 MB but the level of pathway activation in Group 3 was not investigated nor its functional relevance (Ferrucci *et al*, 2018). It has also been suggested that TGF β ligands determine the promigratory potential of bFGF signaling in MB but this study was performed in non-Group 3 cell lines and in atypical MB-PDX (Santhana Kumar *et al*, 2018). Using patient samples, we showed here that the TGF β /Activin pathway is activated in a subset of Group 3. We confirmed these results using PDXs as well as MB cell lines. In many different cancers, TGF β pathway activation involves autocrine loops, due to the high expression of genes encoding the different TGF β ligands (Rodón *et al*, 2014). We investigated the potential mechanism of activation of the pathway in Group 3. As in other cancers, we observed high expression of *TGFB1* and *TGFB3* in Group 3 MB. In addition, we also observed very high expression of *INHBB*, which encodes ActivinB, suggesting that TGF β 1, TGF β 3, and ActivinB ligands could be potentially responsible for pathway activation. Unexpectedly, our data clearly showed that Group 3 cells do not respond to TGF β stimulation, while they are highly sensitive to Activin, excluding *de facto* TGF β 1 and TGF β 3 as potential ligands that would activate the pathway in an autocrine manner. The mechanism underlying the lack of TGF β responsiveness in G3 models is currently unknown. However, we noticed a significant decrease in RNA and protein *TGFBR2* levels in G3 samples. Since *TGFBR2* is absolutely required for signal transduction by TGF β ligands, this observation may provide a plausible explanation to this lack of response. In any case, our experiments based on conditioned medium, blocking antibody, follistatin treatment, and siRNA on cell lines clearly pointed out on ActivinB as an important determinant of pathway activation in Group 3. Importantly, these observations were confirmed on PDXs. According to transcriptomic data showing that *INHBB* expression is found in a large number of Group 3 MB, this autocrine mechanism is very likely the main mechanism leading to pathway activation in this group. Additional mechanisms, such as amplifications of receptors or *Prune-1* expression (see above), could

also contribute to this activation, either by cooperating with ActivinB or by being involved in a more restricted number of Group 3 MBs that do not exhibit this autocrine mechanism. Interestingly, while TGF β s and Activins activate the same Smad pathway (Smad2/3), TGF β s autocrine mechanisms have been much more frequently described to be implicated in cancer progression than Activins (Chen *et al*, 2002; Wakefield & Hill, 2013), highlighting a singularity of Group 3 MBs. Since Activin is involved in developmental processes (Wu & Hill, 2009), its implication in Group 3 MB instead of TGF β may relate to the pediatric nature of these tumors or to their cell of origin. In support of the latter and according to brain atlas data (http://developingmouse.brain-map.org/search/show?page_num=0&page_size=5&no_paging=false&exact_match=true&search_term=Inhbb&search_type=gene), *INHBB* displays a very cell-specific and dynamic profile during cerebellar development.

ActivinB induces PMPA1 expression and promotes cell cycle progression

The TGF β /Activin pathway is highly pleiotropic and sometimes displays antagonistic functions during carcinogenic processes. For example, it can promote either cell cycle arrest or proliferation, depending on the context. This opposite role has been well illustrated in Glioblastoma in which the epigenetic status of the cells, in particular its DNA methylation profile, is responsible for this duality (Bruna *et al*, 2007). In agreement with this pro-mitogenic activity, we found that pathway inhibition decreased cell proliferation in Group 3 MB, while ActivinB stimulation increased it by consistently promoting cell cycle progression. *MYC* and *OTX2*, two genes known to promote cell proliferation in Group 3 MB, are target genes of the Smad2/3 pathway in other contexts (Jia *et al*, 2009; Brown *et al*, 2011; Coda *et al*, 2017). In general, this signaling pathway reduces *MYC* expression (Warner *et al*, 1999; Seoane *et al*, 2001), although it can be induced in human embryonic stem cells (Brown *et al*, 2011). Since *OTX2* has been demonstrated to be a major Smad2/3 target gene in the nervous system (Jia *et al*, 2009), it has been proposed to be a Smad2/3 inducible gene in Group 3 MB (Ferrucci *et al*, 2018) and considered as part of this signaling pathway in MB (Northcott *et al*, 2012b). We did not detect any consistent changes in *MYC* and *OTX2* expression upon modulation of the Activin pathway, suggesting that this signaling pathway does not regulate these two genes in Group 3 tumors and promotes tumor growth through other

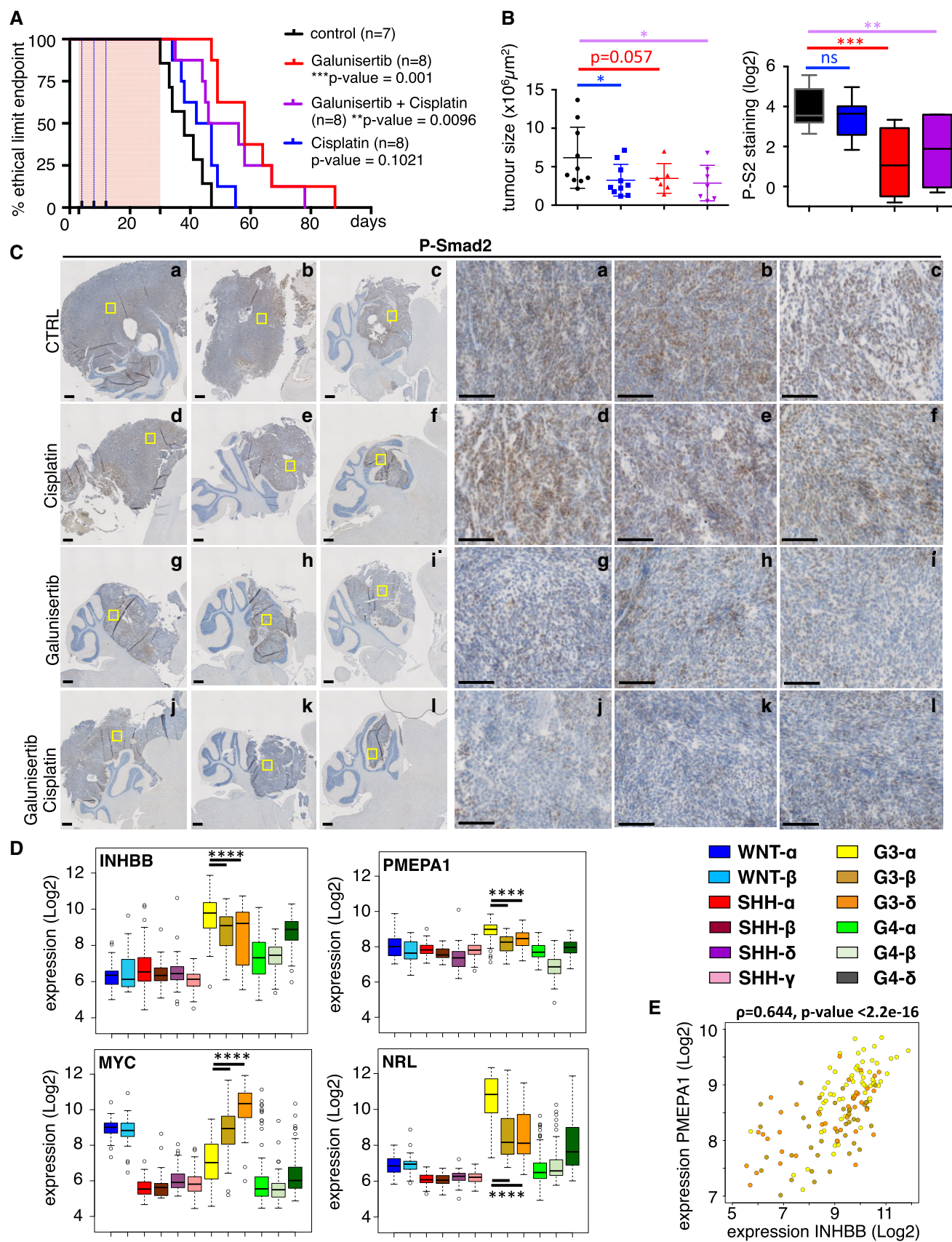


Figure 7.

Figure 7. ActivinB signaling is a potential therapeutic target for patients of group 3 MB.

- A Kaplan–Meier representing survival of mice treated with either vehicle (black) or Galunisertib (LY2157299, red) or Cisplatin (blue) or a combination of Galunisertib and Cisplatin (purple) after orthotopic grafting of PDX4 cells into the cerebellum. The pink rectangle represents Galunisertib treatment duration, while the blue dotted lines represent the 3 Cisplatin administrations.
- B Boxplot of tumor area after 25 days of treatment. On the right, boxplots represent quantification of P-Smad2 staining on tumor (IHC). The code color is similar to panel (A).
- C P-Smad2 staining by IHC in 3 representative tumors per group after 25 days of treatment. The scale bars represent 500 and 100 μm on the left and right panels, respectively.
- D Boxplots representing the expression level of *INHBB*, *PMEPA1*, *MYC*, and *NRL* in the different MB subtypes, as defined in Cavalli *et al* (2017a). Only *P*-values corresponding to comparisons between Group 3 subtypes are indicated. Detailed statistics are presented in Appendix Table S3. Patient samples are colored by subtypes as indicated.
- E Scatter plot of *INHBB* and *PMEPA1*, expression levels in Group 3 patient samples. Colored dots represent each patient sample, and colors represent the group 3 MB subtypes (α in yellow, β in brown, and δ in orange). Note that this panel is identical to that shown in Appendix Fig S3A (yellow) except for the color code.

Data information: Center lines show data median; box limits indicate the 25th and 75th percentiles; lower and upper whiskers extend 1.5 times the interquartile range (IQR) from the 25th and 75th percentiles, respectively (B and D). Squares represents individual tumor (B). Outliers are represented by individual points (D). The *P*-values were determined by log-rank (Mantel-Cox) test on panel (A) and unpaired *t*-test on panel (B). Wilcoxon rank-sum tests were performed for panel (D). Spearman's rank correlation coefficient ρ and *P*-value are indicated on panel E. **P* < 0.05, ***P* < 0.01, ****P* < 0.001, and *****P* < 0.0001. Bars represent the mean \pm SD. Number of replicates is *n* \geq 3. The exact *P*-values and number of replicates are indicated in Appendix Table S5.

mechanisms. In contrast, we showed that *PMEPA1*, whose expression is induced by TGF β or Activin signaling in many different contexts (Coda *et al*, 2017), is also an Activin-regulated gene in Group 3 MB. Indeed, inhibition or activation of the Activin signaling pathway modulated *PMEPA1* expression accordingly. This regulation is likely to be relevant in patients since *INHBB* and *PMEPA1* expression is correlated in human MB samples. *PMEPA1* is the top correlated gene with *INHBB* within Group 3 MB, showing that their expression is strongly linked in this group. In all MB samples, the correlation is lower than within Group 3 samples. Indeed, *PMEPA1* expression is higher in Group 3 but reaches an intermediate level in WNT and SHH groups that do not express *INHBB*. In WNT and SHH groups, *PMEPA1* expression is likely due to TGF β /Activin pathway activation, as highlighted by the high level of P-Smad2 found in patient samples in those two groups, although pathway activation is independent on ActivinB autocrine stimulation. Thus, *PMEPA1* expression likely constitutes a relevant and general readout of Smad2/3 activation, which is due to an ActivinB autocrine stimulation in Group 3 and to other mechanisms in SHH and WNT groups. The role of *PMEPA1* in cancer appears to be quite complex. It has been shown to act as negative auto-regulatory loop by limiting Smad2/3 activation (Watanabe *et al*, 2010) although this appears to be isoform dependent (Fournier *et al*, 2015). Other reports suggested that *PMEPA1* could promote cell proliferation in cancer cells (Vo Nguyen *et al*, 2014; Nie *et al*, 2016) and convert TGF β /Activin signaling from a tumor suppressor to tumor promoting pathway (Singha *et al*, 2010). Although not excluding that *PMEPA1* may limit Smad2/3 activation in Group 3 MB without abolishing it, our results are in line with those latter reports. Indeed, siRNA-mediated *PMEPA1* downregulation decreased Group 3 cell proliferation showing that it is an important mediator of ActivinB promoting Group 3 MB growth.

Targeting the TGF β /Activin pathway in Group 3 as a therapeutic perspective

We observed an activation of the Smad2 pathway in Group 3 cell lines, PDXs, and patient samples. However, this activation appears to be heterogeneous. For example, some cell lines and PDXs displayed a very high basal level of Smad2 activation, while others a much more moderate and this held true on patient samples. Since

different Group 3 subtypes have been described recently (Cavalli *et al*, 2017a; Northcott *et al*, 2017; Schwalbe *et al*, 2017), we investigated whether *INHBB* expression could be enriched in a given subtype. We observed that *INHBB* expression is higher in subtype Group 3 α according to the classification of Cavalli *et al* (2017a). This subtype is characterized by the lack of *MYC* amplification and, as shown in this study, an overall moderate to low *MYC* expression level. This subtype displays high photoreceptor gene expression (Cavalli *et al*, 2017a), including those of the two master regulators of this program, *NRL* and *CRX*. Accordingly, we recently showed that their expression defines a specific subtype within Group 3 (Garancher *et al*, 2018). Our data may suggest that the expression of *INHBB* could lead to Smad2/3 activation in this subtype. Indeed, we found that *PMEPA1*, whose expression can be considered as a readout of Smad2/3 activation (see above), is significantly higher in Group 3 α subtype as compared to other Group 3 subtypes. Moreover, its expression is tightly correlated to that of *INHBB* in the Group 3 tumors, suggesting that *INHBB* expression leads to productive pathway activation. In support to this, PDX4, which expresses very high level of *INHBB*, also displays very strong Smad2 activation. This PDX is not *MYC* amplified and highly expresses the photoreceptor genes (Garancher *et al*, 2018). It should be nevertheless mentioned that the 1603MED cell line is also characterized by high *INHBB* expression and high Smad2 activation but is *MYC* amplified and does not express high level of photoreceptor genes (Raso *et al*, 2008). Thus, we proposed that activation of the Smad2/3 pathway involving an Activin B autocrine stimulation is enriched in subtype Group 3 α , although not limited to this subtype. Interestingly, treatment with Galunisertib, whose toxicity and efficacy is currently tested in clinical trials for Glioblastoma patients, increased the survival of mice orthotopically grafted with PDX4. This suggests that Group 3 α patients may be particularly sensitive to pathway inhibition.

In conclusion, the TGF β /Activin signaling is activated through an ActivinB autocrine mechanism in a subset of Group 3 MB subtype. Not only this pathway is activated, but it also plays a growth-promoting role and constitutes an important driver of therapeutic interest in these tumors. We propose that high levels of *INHBB*, *PMEPA1* expression, and Smad2 phosphorylation might constitute biomarkers for potential Group 3 patients to be eligible to Galunisertib treatment.

Materials and Methods

Bioinformatics analyses

Normalized primary medulloblastoma gene expression data (763 samples) and samples affiliation published in Cavalli *et al* (2017a) were used to generate scatter plots and gene expression boxplots per subgroup and subtype for the genes of interest. Normalized primary medulloblastoma protein levels data (45 samples) and samples affiliation published in Archer *et al* (2018a) were used to generate protein levels boxplots per subgroup and subtype for the proteins of interest. Wilcoxon rank-sum tests were performed between subgroups and subtypes. Spearman rank correlation coefficients were computed between the *INHBB* gene expression values and all other genes for Group 3 samples. The gene pairs were ranked according to the Spearman correlation values.

Patient samples

All MB samples were collected following written informed consent, and study approval was obtained by internal review boards from the following institutions: the Necker Hospital for Sick Children (Paris, France) and the Hospital for Sick Children (Toronto, Canada) (Forget *et al*, 2018).

Cell culture conditions and treatments

HD-MB03 (named HDMB03) obtained from Dr. Milde (Milde *et al*, 2012), D458MED (named D458) obtained from Dr. Bigner (He *et al*, 1991), UW228 (Keles *et al*, 1995), ONS-76, and DAOY MB cell lines (ATCC) were cultured as described in Garancher *et al* (2018). 1603MED obtained from Dr. Raso (Raso *et al*, 2008) and D283MED (ATCC) (named D283) cell lines were maintained in DMEM condition supplemented with 12% fetal bovine serum (GIBCO), 50 units/ml penicillin and streptomycin (Invitrogen) and 0.1 mM non-essential amino acids and sodium pyruvate. 1603MED cell lines were also supplemented with 2 mM L-glutamine. All cells were cultured at 37°C in a humidified atmosphere containing 5% CO₂. LY363947 and SB431532 resuspended in DMSO (selleckchem) were used at a final concentration of 5 μM for 24 h. Stimulations with TGFB1 and ActivinB were performed for 1 or 24 h at 10 ng/ml. Inhibitions with a recombinant blocking antibody against ActivinB (R&D systems) or recombinant follistatin (R&D systems) were performed for 24 h at 5 and 0.2 μg/ml, respectively.

Growth curves and proliferation assays

For growth curve analyses, 1603MED cells were plated at 8×10^5 cells/ml, and D283 and D458 at 2.5×10^5 cells/ml. Cell were treated once at day 0. Number of viable cells was assessed as indicated in each figure. For D283 and D458, proliferation was monitored using Incucyte Proliferation Assay (Essen bioscience) by analyzing the surface occupied by cells (% confluence).

Conditioned media experiments

Receiving cells (HDMB03) were plated at 1.5×10^5 cells/well in 6-wells plates. 1603MED and HDMB03 conditioned media were

obtained by 18 h of incubation at 1×10^6 cells/ml. Non-conditioned media was obtained in the same conditions in absence of cells. Media were collected, filtered, and incubated with PBS as control or blocking antibody against ActivinB (5 μg/ml) for 2 h at 4°C with rotation. Cells were treated with 1 ml of media for 1 h, and cell extracts were collected for WB analysis.

Western Blotting and antibodies

Cell extracts were obtained and WB analyses performed as described in Rocques *et al* (2007). Membranes were incubated at 4°C overnight with anti-Smad2 (CST, CS86F7, 1/1,000), anti-PhosphoSmad2 (CST, CS138D4, 1/1,000), anti-OTX2 (MerckMillipore, #AB9566, 1/10,000), anti-MYC (CST, CSD3N8F, 1/1,000), anti-PMEPA1 (proteintech, 1/500), and anti-β-Actin (Sigma A1978, 1/5,000). Signals were acquired with a CCD camera (G/BOX, Syngene). All the P-Smad2/Total Smad2 normalizations for the relevant blots are provided in Appendix Fig S5.

Real time RT-PCR

All experiments were performed according to the protocols described in Garancher *et al* (2018). Oligonucleotides used in this study are described in Appendix Table S4.

siRNA and transfection assays

Transfection assays were performed in either 96- or 6-well plates. siRNA transfection was performed according to the manufacturer's instructions (Dharmacon). DharmaFECT 3 transfection reagent was used at 0.15 and 4 μl/100 μl of transfection medium for D283 and 1603MED cell lines, respectively. D283 cells were plated at 5×10^5 cells/ml and siRNA were used at a final concentration of 25 nM. 1603MED cells were plated at a concentration of 1×10^6 cells/ml with 10 μM final of siRNA. Transfection assay efficiency was assessed using siGlo (D001630-01-05). siRNA smartpool CTRL (D-001810-00-1005), smartpool INHBB (L-011702-00-0010), smartpool PMEPA1 (L-010501-00-0020), ON-TARGETplus individual siRNA PMEPA1#1 (L-010501-05), and PMEPA1#2 (L-010501-08) were purchased from Dharmacon. For rescue experiments, cells were stimulated 10 h after transfection with ActivinB at 10 ng/ml.

Apoptosis and cell cycle analyses by flow cytometry

1603MED and D283 cell lines were plated at 8×10^5 and 2.5×10^5 cell/ml, respectively. Apoptosis was assessed at day 2 using cleaved caspase-3 staining with Apoptosis Kit, APC (BD Bioscience). Cell cycle was analyzed at day 2 using APC BrdU flow Kit (BD Bioscience). Experiments were performed using FACS Kanto (BD Bioscience) and analyzed with FlowJo software (Tree Star).

Patient derived xenografts and PDX cultures

PDXs were obtained, maintained, dissociated, and cultured as described in Garancher *et al* (2018). PDX3, PDX4, and PDX7 correspond to ICN-MB-PDX-3, ICN-MB-PDX-4, and ICN-MB-PDX-7, respectively. All *in vitro* treatments were performed as described for cell lines.

Animal experimentation

NMRI-nu immunodeficient mice were obtained from Janvier Laboratory. Experiments were performed on 7–8 weeks old female mice after 1 week of acclimation in animal facility of Curie Institute. Mice were housed under a controlled temperature and 12 h/12 h light–dark cycle with access to food and water *ad libitum* in conventional animal facility. For the animal welfare, mice are maintained in social groups with enrichment. Animal care and use for this study were performed in accordance with the recommendations of the European Community (2010/63/UE) for the care and use of laboratory animals. Experimental procedures were specifically approved by the ethics committee of the Institut Curie CEEA-IC #118 (Authorization 02383.02 given by National Authority) in compliance with the international guidelines.

Orthotopic transplantation and pharmacological inhibitor treatments

NMRI Nude female mice (Janvier labs) were orthotopically grafted directly in the cerebellum at 7 weeks with 3×10^5 cells/5 μ l of ICN-MB-PDX-4 cells as described in Garancher *et al* (2018). After 3 days, mice were administrated 300 μ l of LY2157299 (Galunisertib, AbMole Bioscience) orally at a dose of 75 mg/kg in 12% DMSO, 30% PEG, and water. Mice were treated 7 days a week twice a day until day 30. Mice were injected with Cisplatin (Sigma) in saline solution at a dose of 2 mg/kg intraperitoneally at days 4, 8, and 12 post-grafting. Mice were euthanized when scientific and clinical end points were reached and brains were collected and fixed.

Tissue processing and immunohistochemistry (IHC)

After 25 days of treatment, 6 mice per group received ice-cold PBS and 4% formaldehyde/PBS via intracardiac perfusions. Brains were collected and fixed overnight in 4% formaldehyde/PBS at 4°C. IHC was performed on 12- μ m-thick sections with the following primary antibodies: anti-PhosphoSmad2 (CST, CS138D4, 1/300), Ki67 (CST, CS9161, 1/500), and cleaved caspase-3 (eBioscience, #14-5698-82, 1/500). Image acquisitions were performed on a Zeiss microscope. Tumor size and IHC staining were assessed using ImageJ software.

Quantification and statistical analyses

Western blot was quantified from digital data acquisition (CCD camera) using ImageJ software. Statistical details can be found in both figures and figure legends. A $P \leq 0.05$ is considered as significant. IHC quantifications were assessed using ImageJ software. All experiments were performed, at least, in three independent triplicates. Statistical analyses are provided in Appendix Table S1 (Statistics related to Figs 1B and 5B and C, and EV1B), Appendix Table S2 (Statistics related to Figs 1D and 6B, and EV1D and Appendix Fig S4A), and Appendix Table S3 (Statistics related to Figs 7D and E, and 6B, and Appendix Fig S3A). The exact P -values and number of replicates for each experiment are indicated in Appendix Table S5.

Expanded View for this article is available online.

The paper explained

Problem

Medulloblastoma (MB) is a pediatric tumor of the cerebellum arising at a median age of 7 years. The current treatment associates surgery, radiotherapy, and chemotherapy and has allowed reaching an overall survival of 70–80%. MB is a heterogeneous disease classified in four groups, with the poorly characterized Group 3 showing the worst prognosis. Few recurrent genomic alterations have been identified at low frequency, and at the transcriptional level, Group 3 is known to express MYC and photoreceptor genes. While highly problematic at the clinical level, neither specific nor targeted therapy has been identified for this specific Group.

Results

We show that a subset of Group 3 MBs displays activation of the TGF β /Activin pathway. In contrast to carcinomas where TGF β s are the main driver of activation of this pathway, our data established that this activation is mainly due to an autocrine stimulation involving ActivinB. We identify a subset of Group 3 tumors in which this mechanism is at play. These tumors express high levels of *INHBB* (encoding ActivinB) and display high expression of *PMEPA1*, a well-known target gene of this signaling pathway. Functionally, the pathway sustains cell proliferation by inducing the expression of *PMEPA1*. Importantly, treatment with Galunisertib, an inhibitor of this pathway currently tested in clinical trials for Glioblastoma patients, increases the survival of mice orthotopically grafted with Group 3 MB-PDX.

Impact

TGF β /Activin signaling plays a driving role in a subset of Group 3 MBs. We propose that high level of Smad2 phosphorylation, high *INHBB*, and high expression of *PMEPA1* could represent valuable biomarkers for identifying patients who will be particularly eligible to Galunisertib treatment.

Acknowledgements

We thank members of our laboratory for helpful advice and comments, C. Lasgi for her assistance in FACS analyses, C. Alberti and E. Belloir at the Institut Curie mouse facilities. The authors greatly acknowledge Cédric Messaoudi from Institut Curie UMR9187/U1196 and Laetitia Besse from the PICT-IBiSA Imaging Facility for useful advices on image processing. We also thank Drs. D. Bigner, J.R. Silber, and T. Milde for providing us with materials. This work was funded by grants from Ligue Nationale Contre le Cancer (Essonne-Oise-Yvelines #M18759, #M16649, and Legs Chovet), Institut National du Cancer (INCa, Pair Pédiatrie, Mr ROBOT), the IRS “NanoTheRad” of University U-PSUD (Paris-Saclay), and ADAM-Cancer (Association D'enfants Atteints de Médulloblastome). AG, LMO, and MM were supported by a fellowship from the Ministère Français de l'Enseignement Supérieur, de la Recherche et de l'Innovation, and Fondation ARC (4th year PhD fellowship).

Author contributions

Conceptualization: CP and MM. Methodology: CP, MM, FMGC, AF, SD, AG, FB, and AE. Investigation: MM, ML, FMGC, CF, MA, AF, LM-O, SD, AG, AD, and SL. Supervision: CP, FB, and AE. Resources: CP, FD, MDT, SP, OA, FB, JM-P, OD, AR, and AE. Writing—Original draft: CP, AE, and MM. Writing—Review & Editing: CP, AE, MM, and SD. Funding acquisition: CP, FB, and AE.

Conflict of interest

The authors declare that they have no conflict of interest.

For more information

Website team:

(i) <https://science.institut-curie.org/research/biology-chemistry-of-radiations-cell-signaling-and-cancer-axis/umr-3347-normal-and-pathological-signaling/team-eychene-pouponnot/>

In situ Hybridization data on the mouse developing brain can be found:

(i) <http://developingmouse.brain-map.org/>

Public Transcriptomic analysis of MB samples (R2):

(i) https://hgserver1.amc.nl/cgi-bin/r2/main.cgi?&dscope=MB500&option=ab_out_dscope

(ii) <https://hgserver1.amc.nl/cgi-bin/r2/main.cgi>

Public Proteomic analysis of MB samples:

(i) <https://medullo.shinyapps.io/archer2018/>

References

- Anido J, Sáez-Borderías A, González-Juncà A, Rodón L, Folch G, Carmona MA, Prieto-Sánchez RM, Barba I, Martínez-Sáez E, Prudkin L *et al* (2010) TGF- β receptor inhibitors target the CD44(high)/Id1(high) glioma-initiating cell population in human glioblastoma. *Cancer Cell* 18: 655–668
- Antsiferova M, Werner S (2012) The bright and the dark sides of activin in wound healing and cancer. *J Cell Sci* 125: 3929–3937
- Archer TC, Ehrenberger T, Mundt F, Gold MP, Krug K, Mah CK, Mahoney EL, Daniel CJ, LeNail A, Ramamoorthy D *et al* (2018a) Proteomics, post-translational modifications, and integrative analyses reveal molecular heterogeneity within medulloblastoma subgroups. *Cancer Cell* 34: 396–410.e8
- Archer TC, Ehrenberger T, Mundt F, Gold MP, Krug K, Mah CK, Mahoney EL, Daniel CJ, LeNail A, Ramamoorthy D *et al* (2018b). MassIVE: MSV000082644 (<https://massive.ucsd.edu/ProteoSAFe/dataset.jsp?accession=MSV000082644>) [DATASET]
- Brown S, Teo A, Pauklin S, Hannan N, Cho CH-H, Lim B, Vardy L, Dunn NR, Trotter M, Pedersen R *et al* (2011) Activin/Nodal signaling controls divergent transcriptional networks in human embryonic stem cells and in endoderm progenitors. *Stem Cells* 29: 1176–1185
- Bruna A, Darken RS, Rojo F, Ocaña A, Peñuelas S, Arias A, Paris R, Tortosa A, Mora J, Baselga J *et al* (2007) High TGF β -Smad activity confers poor prognosis in glioma patients and promotes cell proliferation depending on the methylation of the PDGF-B gene. *Cancer Cell* 11: 147–160
- Cavalli FMG, Remke M, Rampasek L, Peacock J, Shih DJH, Luu B, Garzia L, Torchia J, Nor C, Morrissy AS *et al* (2017a) Intertumoral heterogeneity within medulloblastoma subgroups. *Cancer Cell* 31: 737–754.e6
- Cavalli FMG, Remke M, Rampasek L, Peacock J, Shih DJH, Luu B, Garzia L, Torchia J, Nor C, Morrissy AS *et al* (2017b). Gene Expression Omnibus GSE85218 (<https://www.ncbi.nlm.nih.gov/geo/query/acc.cgi?acc=GSE85218>). [DATASET]
- Chen Y-G, Lui HM, Lin S-L, Lee JM, Ying S-Y (2002) Regulation of cell proliferation, apoptosis, and carcinogenesis by activin. *Exp Biol Med* 227: 75–87
- Cho Y-J, Tsherniak A, Tamayo P, Santagata S, Ligon A, Greulich H, Berhoukim R, Amani V, Goumnerova L, Eberhart CG *et al* (2011) Integrative genomic analysis of medulloblastoma identifies a molecular subgroup that drives poor clinical outcome. *J Clin Oncol Off J Am Soc Clin Oncol* 29: 1424–1430
- Coda DM, Gaarenstroom T, East P, Patel H, Miller DSJ, Loble A, Matthews N, Stewart A, Hill CS (2017) Distinct modes of SMAD2 chromatin binding and remodeling shape the transcriptional response to NODAL/Activin signaling. *Elife* 6: e22474
- Ferrucci V, de Antonellis P, Pennino FP, Asadzadeh F, Virgilio A, Montanaro D, Galeone A, Boffa I, Pisano I, Scognamiglio I *et al* (2018) Metastatic group 3 medulloblastoma is driven by PRUNE1 targeting NME1-TGF- β -OTX2-SNAIL via PTEN inhibition. *Brain J Neurol* 141: 1300–1319
- Forget A, Martignetti L, Puget S, Calzone L, Brabetz S, Picard D, Montagud A, Liva S, Sta A, Dingli F *et al* (2018) Aberrant ERBB4-SRC signaling as a hallmark of group 4 medulloblastoma revealed by integrative phosphoproteomic profiling. *Cancer Cell* 34: 379–395.e7
- Fournier PGJ, Juárez P, Jiang G, Clines GA, Niewolna M, Kim HS, Walton HW, Peng XH, Liu Y, Mohammad KS *et al* (2015) The TGF- β signaling regulator PMEPA1 suppresses prostate cancer metastases to bone. *Cancer Cell* 27: 809–821
- Garancher A, Lin CY, Morabito M, Richer W, Rocques N, Larcher M, Bihannic L, Smith K, Miquel C, Leboucher S *et al* (2018) NRL and CRX define photoreceptor identity and reveal subgroup-specific dependencies in medulloblastoma. *Cancer Cell* 33: 435–449.e6
- He XM, Wikstrand CJ, Friedman HS, Bigner SH, Pleasure S, Trojanowski JQ, Bigner DD (1991) Differentiation characteristics of newly established medulloblastoma cell lines (D384 Med, D425 Med, and D458 Med) and their transplantable xenografts. *Lab Invest J Tech Methods Pathol* 64: 833–843
- Holgado BL, Guerreiro Stucklin A, Garzia L, Daniels C, Taylor MD (2017) Tailoring medulloblastoma treatment through genomics: making a change, one subgroup at a time. *Annu Rev Genomics Hum Genet* 18: 143–166
- Jia S, Wu D, Xing C, Meng A (2009) Smad2/3 activities are required for induction and patterning of the neuroectoderm in zebrafish. *Dev Biol* 333: 273–284
- Kawauchi D, Robinson G, Uziel T, Gibson P, Reh J, Gao C, Finkelstein D, Qu C, Pounds S, Ellison DW *et al* (2012) A mouse model of the most aggressive subgroup of human medulloblastoma. *Cancer Cell* 21: 168–180
- Keles GE, Berger MS, Srinivasan J, Kolstoe DD, Bobola MS, Silber JR (1995) Establishment and characterization of four human medulloblastoma-derived cell lines. *Oncol Res* 7: 493–503
- Kool M, Koster J, Bunt J, Hasselt NE, Lakeman A, van Sluis P, Troost D, Meeteren NS, Caron HN, Cloos J *et al* (2008) Integrated genomics identifies five medulloblastoma subtypes with distinct genetic profiles, pathway signatures and clinicopathological features. *PLoS ONE* 3: e3088
- Levy L, Hill CS (2006) Alterations in components of the TGF- β superfamily signaling pathways in human cancer. *Cytokine Growth Factor Rev* 17: 41–58
- Lin CY, Erkek S, Tong Y, Yin L, Federation AJ, Zapotka M, Haldipur P, Kawauchi D, Risch T, Warnatz H-J *et al* (2016) Active medulloblastoma enhancers reveal subgroup-specific cellular origins. *Nature* 530: 57–62
- Liu R, Zhou Z, Huang J, Chen C (2011) PMEPA1 promotes androgen receptor-negative prostate cell proliferation through suppressing the Smad3/4-c-Myc-p21 Cip1 signaling pathway. *J Pathol* 223: 683–694
- Lonardo E, Hermann PC, Mueller M-T, Huber S, Balic A, Miranda-Lorenzo I, Zagorac S, Alcalá S, Rodríguez-Arabaola I, Ramirez JC *et al* (2011) Nodal/Activin signaling drives self-renewal and tumorigenicity of pancreatic cancer stem cells and provides a target for combined drug therapy. *Cell Stem Cell* 9: 433–446
- Marino FE, Risbridger G, Gold E (2013) The therapeutic potential of blocking the activin signalling pathway. *Cytokine Growth Factor Rev* 24: 477–484
- Martin AM, Raabe E, Eberhart C, Cohen KJ (2014) Management of pediatric and adult patients with medulloblastoma. *Curr Treat Options Oncol* 15: 581–594
- Massagué J (2008) TGF β in cancer. *Cell* 134: 215–230

- Matzuk MM, Finegold MJ, Mather JP, Krummen L, Lu H, Bradley A (1994) Development of cancer cachexia-like syndrome and adrenal tumors in inhibin-deficient mice. *Proc Natl Acad Sci USA* 91: 8817–8821
- Milde T, Lodrini M, Savelyeva L, Korshunov A, Kool M, Brueckner LM, Antunes ASLM, Oehme I, Pekrun A, Pfister SM et al (2012) HD-MB03 is a novel Group 3 medulloblastoma model demonstrating sensitivity to histone deacetylase inhibitor treatment. *J Neurooncol* 110: 335–348
- Nie Z, Wang C, Zhou Z, Chen C, Liu R, Wang D (2016) Transforming growth factor-beta increases breast cancer stem cell population partially through upregulating PMEPA1 expression. *Acta Biochim Biophys Sin* 48: 194–201
- Niklison-Chirou MV, Erngren I, Engskog M, Haglöf J, Picard D, Remke M, McPolin PHR, Selby M, Williamson D, Clifford SC et al (2017) TAp73 is a marker of glutamine addiction in medulloblastoma. *Genes Dev* 31: 1738–1753
- Northcott PA, Korshunov A, Pfister SM, Taylor MD (2012a) The clinical implications of medulloblastoma subgroups. *Nat Rev Neurol* 8: 340–351
- Northcott PA, Shih DJH, Peacock J, Garzia L, Morrissy AS, Zichner T, Stütz AM, Korshunov A, Reimand J, Schumacher SE et al (2012b) Subgroup-specific structural variation across 1,000 medulloblastoma genomes. *Nature* 488: 49–56
- Northcott PA, Lee C, Zichner T, Stütz AM, Erkek S, Kawauchi D, Shih DJH, Hovestadt V, Zapatka M, Sturm D et al (2014) Enhancer hijacking activates GFI1 family oncogenes in medulloblastoma. *Nature* 511: 428–434
- Northcott PA, Buchhalter I, Morrissy AS, Hovestadt V, Weischenfeldt J, Ehrenberger T, Gröbner S, Segura-Wang M, Zichner T, Rudneva VA et al (2017) The whole-genome landscape of medulloblastoma subtypes. *Nature* 547: 311–317
- Pei Y, Moore CE, Wang J, Tewari AK, Eroshkin A, Cho Y-J, Witt H, Korshunov A, Read T-A, Sun JL et al (2012) An animal model of MYC-driven medulloblastoma. *Cancer Cell* 21: 155–167
- Peñuelas S, Anido J, Prieto-Sánchez RM, Folch G, Barba I, Cuatras I, García-Dorado D, Poca MA, Sahuquillo J, Baselga J et al (2009) TGF-beta increases glioma-initiating cell self-renewal through the induction of LIF in human glioblastoma. *Cancer Cell* 15: 315–327
- Raso A, Negri F, Gregorio A, Nozza P, Mascelli S, De Marco P, Merello E, Milanaccio C, Ravegnani M, Cama A et al (2008) Successful isolation and long-term establishment of a cell line with stem cell-like features from an anaplastic medulloblastoma. *Neuropathol Appl Neurobiol* 34: 306–315
- Ripoche D, Charbord J, Hennino A, Teinturier R, Bonnavion R, Jaafar R, Goehrig D, Cordier-Bussat M, Ritvos O, Zhang CX et al (2015) ActivinB is induced in insulinoma to promote tumor plasticity through a β -cell-induced dedifferentiation. *Mol Cell Biol* 36: 756–764
- Rocques N, Abou Zeid N, Sii-Felice K, Lecoin L, Felder-Schmittbuhl MP, Eycheine A, Poupponnot C (2007) GSK-3-mediated phosphorylation enhances Maf-transforming activity. *Mol Cell* 28: 584–597
- Rodón L, González-Juncà A, del Inda M, Sala-Hojman A, Martínez-Sáez E, Seoane J (2014) Active CREB1 promotes a malignant TGF β 2 autocrine loop in glioblastoma. *Cancer Discov* 4: 1230–1241
- Ross S, Hill CS (2008) How the Smads regulate transcription. *Int J Biochem Cell Biol* 40: 383–408
- Santhana Kumar K, Neve A, Guerreiro Stucklin AS, Kuzan-Fischer CM, Rushing EJ, Taylor MD, Tripolitsioti D, Behrmann L, Kirschenbaum D, Grotzer MA et al (2018) TGF- β determines the pro-migratory potential of bFGF signaling in medulloblastoma. *Cell Rep* 23: 3798–3812.e8
- Schwalbe EC, Lindsey JC, Nakjang S, Crosier S, Smith AJ, Hicks D, Rafiee G, Hill RM, Iliasova A, Stone T et al (2017) Novel molecular subgroups for clinical classification and outcome prediction in childhood medulloblastoma: a cohort study. *Lancet Oncol* 18: 958–971
- Seoane J, Poupponnot C, Staller P, Schader M, Eilers M, Massagué J (2001) TGFbeta influences Myc, Miz-1 and Smad to control the CDK inhibitor p15INK4b. *Nat Cell Biol* 3: 400–408
- Seoane J, Gomis RR (2017) TGF- β family signaling in tumor suppression and cancer progression. *Cold Spring Harb Perspect Biol* 9: a022277
- Singha PK, Yeh I-T, Venkatachalam MA, Saikumar P (2010) Transforming growth factor-beta (TGF-beta)-inducible gene TMEPAI converts TGF-beta from a tumor suppressor to a tumor promoter in breast cancer. *Cancer Res* 70: 6377–6383
- Taylor MD, Northcott PA, Korshunov A, Remke M, Cho Y-J, Clifford SC, Eberhart CG, Parsons DW, Rutkowski S, Gajjar A et al (2012) Molecular subgroups of medulloblastoma: the current consensus. *Acta Neuropathol* 123: 465–472
- Vassalli A, Matzuk MM, Gardner HA, Lee KF, Jaenisch R (1994) Activin/inhibin beta B subunit gene disruption leads to defects in eyelid development and female reproduction. *Genes Dev* 8: 414–427
- Vo Nguyen TT, Watanabe Y, Shiba A, Noguchi M, Itoh S, Kato M (2014) TMEPAI/PMEPA1 enhances tumorigenic activities in lung cancer cells. *Cancer Sci* 105: 334–341
- Wakefield LM, Hill CS (2013) Beyond TGF β : roles of other TGF β superfamily members in cancer. *Nat Rev Cancer* 13: 328–341
- Wang J, Garancher A, Ramaswamy V, Wechsler-Reya RJ (2018) Medulloblastoma: from molecular subgroups to molecular targeted therapies. *Annu Rev Neurosci* 41: 207–232
- Warner BJ, Blain SW, Seoane J, Massagué J (1999) Myc downregulation by transforming growth factor beta required for activation of the p15(Ink4b) G(1) arrest pathway. *Mol Cell Biol* 19: 5913–5922
- Watanabe Y, Itoh S, Goto T, Ohnishi E, Inamitsu M, Itoh F, Satoh K, Wiercinska E, Yang W, Shi L et al (2010) TMEPAI, a transmembrane TGF-beta-inducible protein, sequesters Smad proteins from active participation in TGF-beta signaling. *Mol Cell* 37: 123–134
- Wu MY, Hill CS (2009) Tgf-beta superfamily signaling in embryonic development and homeostasis. *Dev Cell* 16: 329–343
- Yan X, Xiong X, Chen Y-G (2018) Feedback regulation of TGF- β signaling. *Acta Biochim Biophys Sin* 50: 37–50



License: This is an open access article under the terms of the Creative Commons Attribution 4.0 License, which permits use, distribution and reproduction in any medium, provided the original work is properly cited.