



## Time-dependent lymphocyte count after transplantation is associated with higher risk of graft failure and death

Amaury Dujardin, Marine Lorent, Yohann Foucher, Sophie Brouard, Gilles Blanco, Julien Branchereau, Diego Cantarovich, Agnès Chapelet, Jacques Dantal, Clément Deltombe, et al.

### ► To cite this version:

Amaury Dujardin, Marine Lorent, Yohann Foucher, Sophie Brouard, Gilles Blanco, et al.. Time-dependent lymphocyte count after transplantation is associated with higher risk of graft failure and death. *Kidney International*, 2021, 99 (5), pp.1189-1201. 10.1016/j.kint.2020.08.010 . hal-03236402

**HAL Id: hal-03236402**

**<https://u-paris.hal.science/hal-03236402>**

Submitted on 24 Apr 2023

**HAL** is a multi-disciplinary open access archive for the deposit and dissemination of scientific research documents, whether they are published or not. The documents may come from teaching and research institutions in France or abroad, or from public or private research centers.

L'archive ouverte pluridisciplinaire **HAL**, est destinée au dépôt et à la diffusion de documents scientifiques de niveau recherche, publiés ou non, émanant des établissements d'enseignement et de recherche français ou étrangers, des laboratoires publics ou privés.



Distributed under a Creative Commons Attribution - NonCommercial 4.0 International License

**[QUERY TO AUTHOR: title and abstract rewritten by Editorial Office – not subject to change]**

## **Time-dependent lymphocyte count after transplantation is associated with higher risk of graft failure and death.**

Amaury Dujardin <sup>1,2</sup> \*, Marine Lorent <sup>2,4</sup> \*, Yohann Foucher <sup>2,4</sup>, Christophe Legendre <sup>5</sup>, Clarisse Kerleau <sup>2</sup>, Sophie Brouard <sup>1,2</sup> \* and Magali Giral <sup>1,2,3</sup> \* for the DIVAT consortium \*\*

### **AFFILIATIONS**

<sup>1</sup> CRTI UMR 1064, Inserm, Université de Nantes ; ITUN, CHU Nantes ; RTRS Centaure, Nantes, France.

<sup>2</sup> Centre Hospitalier Universitaire de Nantes, Nantes, France.

<sup>3</sup> Centre d'Investigation Clinique en Biothérapie, Labex IGO, 30 bd Jean Monnet, 44093, Nantes, France.

<sup>4</sup> Inserm UMR 1246 - SPHERE, Université de Nantes, Université de Tours, Nantes, France.

<sup>5</sup> Kidney Transplant Center, Necker University Hospital, APHP, RTRS Centaure, Paris Descartes and Sorbonne Paris Cité Universities, Paris, France.

\* First and last authors are listed by alphabetical order and equally contributed.

\*\* Données Informatisées et VALidées en Transplantation, [www.divat.fr](http://www.divat.fr); DIVAT Cohort Collaborators listed at end of manuscript.

### **CORRESPONDING AUTHOR**

Sophie Brouard, CRTI UMR 1064, Inserm, Université de Nantes ; ITUN, CHU Nantes ; RTRS Centaure, Nantes, France. Phone: +33 2 40 08 78 42, Email: [sophie.brouard@univ-nantes.fr](mailto:sophie.brouard@univ-nantes.fr)

**RUNNING TITLE: Post-transplant lymphopenia and risk of death and graft failure**

**WORD COUNT: Abstract : 196 words**

**Manuscript : 3,773 words**

# ABSTRACT

The transplantation field requires the identification of specific risk factors associated with the level of immunosuppression. Here, our aim was to analyze the association between the number of circulating lymphocytes, monitored routinely by complete blood cell counts during outpatient visits, and patient and graft survival. In total, 2,999 kidney or combined kidney-pancreas recipients transplanted between 2000 and 2016, from two University hospitals, were enrolled. We investigated the etiological relationship between time-dependent lymphocyte count beyond one year after transplantation and patient and graft survival, viral infection and cancer risk using time-dependent multivariate Cox models. Model 1 considered kidney function at one year and model 2 as time-dependent variable. At the time of inclusion (one year after transplantation), 584 patients (19.4%) had deep lymphopenia (under 750 /mm<sup>3</sup>) and 1,072 (35.7%) had a normal count (over 1,500 /mm<sup>3</sup>). A patient with deep lymphopenia at a given follow-up time had significantly higher risks of graft failure, death and viral infection than comparable patients with a normal lymphocyte count at the same time point. Thus, after the first year of transplantation, the occurrence of deep lymphopenia within a patient's follow-up is a risk factor for long-term graft failure, death and viral infection.

**KEYWORDS :** Post-transplant lymphopenia, graft failure, death risk, immune monitoring

# INTRODUCTION

Kidney transplantation is still facing a high morbidity rate due to the use of immunosuppressive therapy <sup>1</sup>. Specifically, induction therapies may lead to lymphopenia <sup>2,3</sup> or blockade of lymphocyte activation, signaling and replication <sup>4</sup>. In addition, the first year after transplantation is a high risk period for acute rejection, which might be treated using additional courses of immunosuppression. More specifically, after ATG induction, immune reconstitution is slow and can be delayed for up to more than two years <sup>5</sup>. Long-term immunotherapies (CNIs, mycophenolate, steroids) can influence the re-expression of some T cell subsets such as regulatory T cells <sup>6</sup> and maintain various levels of immunosuppression in patients, leading to increased infectious and neoplastic complications and nephrotoxicity <sup>7,8</sup>. Conversely, a lack of immunosuppression can trigger graft-related immunological complications and shorten graft survival <sup>9,10</sup>.

Recently, studies have reported that the lymphocyte count could be a prognostic factor for invasive viral infections <sup>11,12</sup>. The frequency of some lymphocyte subsets could even correlate with the occurrence of de novo anti-HLA antibodies, including DSAs, and allograft rejection <sup>13,14</sup>. In HIV-positive kidney transplant recipients, low baseline CD4 counts were predictive of severe CD4 lymphopenia at one year after transplantation and were associated with higher probability of serious infection during the first six months after transplantation than high baseline CD4 counts <sup>15</sup>.

Whereas long-term persistence of lymphopenia and its consequences have been well described, such as CD4 lymphopenia and occurrence of pneumocystis, skin cancer, atheroma and increased mortality <sup>16-18</sup>, there is no large scale and longitudinal analysis of the whole lymphocyte count, and in particular of the effect of a long-term episode of lymphopenia on graft and patient outcomes. A recent study reported an association of long-term CD4 T cell lymphopenia, in 27 HIV-

negative kidney transplant recipients, with malignancy and accelerated decline in kidney allograft function <sup>19</sup>.

We hypothesize that long-term lymphopenia could be associated with worse patient and graft outcomes. In this observational study, we investigated on 2,999 kidney transplant patients the etiological relationship between the time-dependent number of circulating lymphocytes (routinely counted during outpatient visits) and patient or death-censored graft survival. Our secondary endpoint was to establish an association between long-term lymphopenia and viral infections or cancer occurrence to assess the hypothesis that patients with the lowest lymphocyte count might be more exposed to infectious and neoplastic complications.

# RESULTS

## Demographic characteristics

Overall, 9,168 patients were screened and 4,395 met the inclusion criteria. After eliminating those with exclusion criteria, we enrolled 2,999 patients (Figure 1). The demographic characteristics are described in Table 1 and 2. After the first year of transplantation, 250 patients experienced a rejection episode (234 BPAR), 577 had a viral infection diagnosed, and 494 developed a cancer (details are provided in Table S1 and S2). At the time of inclusion (one year after transplantation), 584 patients (19.4%) had deep lymphopenia, 1,346 (44.8%) had mild lymphopenia and 1,072 (35.7%) had a normal lymphocyte count. Figure 2 represents the evolution of lymphocyte counts distribution at each year posttransplantation, Figure 3A shows the inpatient variability of lymphocyte count assessed by considering a representative 5% sample of randomly selected patients and Figure 3B shows the frequency of switching from one group to another all over the study follow-up. Within the follow-up period, 1,018 patients did not switch from one category to another, and 856 patients (28.5%) switched one time. The remaining 1,128 patients (37.6%) switched two times or more. In addition, as shown in Supplementary Figure 1 and 2, no sudden decrease of lymphocyte count occurred before final graft failure or death, respectively, and there was no relationship between the frequency of and the duration between visits and patient health state. The median number of biological collections was 5 (2 to 15) among patients alive with a functioning graft at the end of the follow-up versus 5 (2 to 16) among patients who died or lost their graft. The median duration between two visits was 367 (interquartile range from 350 to 392) days versus 367 (interquartile range from 347 to 401) in these groups of patients, respectively.

## Time-dependent lymphopenia beyond 1 year after transplantation is associated with higher risk of graft failure

Among the 2,999 patients alive at 1-year posttransplantation, 423 lost their graft during follow-up. The death-censored graft survival values of the cohort at 2, 5, and 10 years

posttransplantation were 99.7%, 94.1%, and 78.5%, respectively (Supplementary Figure 3). At 10 years after transplantation, the graft survival values were 69.7%, 78.3% and 82.8%, respectively, for patients harboring deep lymphopenia, mild lymphopenia or a normal lymphocyte count at 1-year posttransplantation. Table 3 shows the results of the unadjusted analyses and the final multivariate Cox model for graft failure risk, using the number of circulating lymphocytes as a time-dependent covariate, unadjusted analyses and model 1 considered eGFR at one year and model 2 considered the renal function as time-dependent. From model 1, we observed a proportional relationship between the number of circulating lymphocytes beyond one year after transplantation and graft failure, with a 3-times higher risk of graft failure for patients with deep lymphopenia at a given follow-up time than for similar patients with a normal lymphocyte count at that follow-up time (HR 3.18, 95% CI 2.29-4.44,  $p < 0.001$ ). The hazard ratio was 1.30 for patients with mild lymphopenia when compared to similar patients with a normal lymphocyte count (95% CI 0.99-1.71,  $p = 0.057$ ). This association was independent of other confounding factors. In model 2, we observed that the effect size between the number of lymphocytes and the outcomes decreased but nevertheless, deep lymphopenia remained risk factor for graft loss (HR 2.21, 95% CI 1.58-3.09,  $p < 0.001$ ).

### **Lymphopenia beyond one year after transplantation is associated with patient survival**

During the first year after transplantation, 298 patients died with a functioning graft. Overall patient survival values (with graft failure censored), at 2 years, 5 years and 10 years were 99.7 %, 95.4 % and 84.9 %, respectively (Supplementary Figure 4). At 10 years, survival values were 87 %, 83.3% and 83.4%, respectively, for patients with a normal lymphocyte count, mild lymphopenia or deep lymphopenia at 1-year posttransplantation. The unadjusted analyses and the final multivariate Cox model using lymphocyte count as a time-dependent covariate are shown in Table 4. Patients with deep lymphopenia at a given time point were significantly more at risk of death than similar patients with a normal lymphocyte count at the same time point, independently of classical risk

factors for death when considering eGFR at one-year or as a time-dependent variable (HR 1.96,  $p<0.001$ ; and HR 1.91,  $p<0.001$ , respectively) whereas patients with mild lymphopenia did not show this trend with risk of death. We performed other analyses to study the association between only the at one-year lymphocyte count and patient survival and graft survival (death censored) (Table S7 and S8 respectively) but we did not observe a significant relationship between lymphopenia and death risk or graft loss.

### **Lower lymphocyte level beyond one year since transplantation is associated with a higher risk of viral infection but not a higher risk of neoplasia**

Starting at one year after transplantation to the end of follow-up, 577 patients developed a viral infection. Patients with deep lymphopenia were significantly more at risk of viral infections than patients with a normal lymphocyte count at the same time point (HR 2.18, CI 1.69-2.83 for Cox model 1 and HR 2.06, CI 1.59-2.67 for Cox model 2), regardless of the CMV serology mismatches between donor and recipient (data not shown). Regarding the treatment, neither the type of induction therapy nor the type of maintenance immunosuppressive therapy was associated with risk of viral infection in the multivariate model (Table 5). 494 patients were diagnosed with a neoplasia between the first anniversary of transplantation and the end of follow-up. The number of circulating lymphocytes (as a time-dependent variable) did not appear to be associated with cancer risk even for viro-induced skin cancer (Table 6 and S9). Induction or maintenance immunosuppressive therapies were not associated with cancer risk.

Finally, as we were not able to validate our observation in an external independent cohort, we modeled separately cohorts of Necker and Nantes centers to replicate our data internally at a lower scale and in two centers with different medical practices (Table 7). We confirmed our observations in both cohorts that deep lymphopenia is an independent risk factor of death-censored graft failure and late onset viral infection but not cancer. We only observed a discrepancy between the two centers for death without particular explanation.

## DISCUSSION

We studied the potential etiological role of routinely monitored lymphocyte counts on patient and graft survival after kidney transplantation. Our results showed that half of the patients switched lymphocyte count category at least two times within their long-term follow-up beyond one year posttransplantation. When a patient's lymphocyte count was below 750 /mm<sup>3</sup> at a given time of follow-up, the risk of graft failure and death was higher than that for a similar patient without lymphopenia at the same time point. However, if the patient with a low lymphocyte count subsequently returned to a normal lymphocyte count, he was no longer at risk. This observation suggests that lymphocyte count could be a risk factor for graft and patient outcomes. Finally, we showed that deep lymphopenia was not associated with occurrence of de novo neoplasia, but as expected, significantly increased the risk of viral infection, after adjusting for induction and maintenance immunosuppressive therapy. To inform a clinical point of view and for easier interpretation of our results in routine practice, we categorized lymphocyte level with thresholds based on empirical evaluation and the CTCAE <sup>20</sup>. We also performed the analyses by taking into account lymphocytes level as a continuous parameter (data not shown) and retained a proportional relationship between the number of circulating lymphocytes (time-dependent) and risks of graft failure, death and viral infection.

Our results are consistent with the hypothesis that a lower lymphocyte count is associated with a higher risk of graft failure and death. Nevertheless, to discard the possibility that lymphocyte count could be a marker of other dynamic processes such as renal function, we generated two models by taking into account eGFR either at one year (for the unadjusted analyses and for a first model) or as time-dependent (for a second model). Although we observed that the effect size between the number of lymphocytes and the outcomes decreased in model 2, possibly because we blocked the causal effect of the lymphocyte levels on the pathway related to time-dependent renal function, deep lymphopenia remained a risk factor for poor prognosis, suggesting that alternative

pathway were responsible. Lymphopenic patients are likely to be more exposed to severe complications such as viral infections (invasive CMV and BK virus), bacterial and opportunistic infections <sup>21</sup>, and neoplasia than patients with normal lymphocyte counts, as suggested by the time-dependent association between the number of circulating lymphocytes and viral infection risk after one year of transplantation. These complications are linked to graft failure risk. They could negatively affect graft and patient outcomes, directly (acute kidney injury associated with the event or its treatment) <sup>22</sup> or indirectly when followed by a medical decision to alleviate immunosuppression therapy <sup>23-25</sup>. In contrast, we found no significant association between the time-dependent number of circulating lymphocytes and cancer risk, despite a similar prevalence of both types of events. An association between lymphopenia and cancer risk was not established and remains a subject of discussion <sup>26,27</sup>. Ducloux et al. reported that CD4 lymphocytopenia was significantly inversely correlated with the occurrence of skin cancer but no correlation was found for other lymphocyte populations (CD8 and B cells), and this may explain why we did not find this correlation in our study <sup>16</sup>. Furthermore, lymphopenia by itself has been proven to induce homeostatic proliferation of the remaining T cells, especially of activated memory cells that show resistance to tolerance and that are also the most efficient and aggressive immune cells targeting the graft <sup>28</sup>. In contrast, regulatory T cells proliferate poorly after ATG-induced lymphocytopenia <sup>29</sup>. Moreover, the majority of immunosuppressive drugs target T cells that may allow B cells to escape and exert their own deleterious effects. In 2016, Luque et al. <sup>19</sup> retrospectively studied patients with more than 10 years of graft function with severe CD4 lymphopenia. In agreement with our results, they found a significantly worse graft outcome in patients with severe lymphopenia. They had the opportunity to study histological lesions for seven patients and found significantly higher total inflammation and extensive fibrosis in lymphopenic patients than in normal individuals. Interestingly, the three groups of patients (according to their one year lymphocyte counts) also differed in terms of immunosuppressive therapies : patients with a lower lymphocyte count were

more often being treated with antiproliferative drugs and corticosteroids, and were more rarely being treated with mTOR inhibitors than patients with normal lymphocyte counts. One explanation could be that the treatment directly influences graft failure and that the lymphocyte count is only a consequence of the immunosuppressive therapy. However, this is not the case, since in our cohort, corticosteroids were associated with less graft failure risk and mTOR inhibitors were associated with higher graft failure risk; these results are exactly the opposite of what was observed with more patients who harbored lower lymphocyte counts being treated with antiproliferative drugs and corticosteroids and less patients with lower lymphocyte count being treated with mTOR inhibitors. Moreover, CNIs are the most cytotoxic maintenance drugs targeting lymphocytes <sup>8,30</sup>, and they are not significantly associated with graft failure risk. These data show that time-dependent lymphocyte count is associated with graft failure risk, independent of the treatment. Another explanation may be that transplant physicians, when faced with patients with a low lymphocyte count, often modify immunosuppressive therapy, either by pausing it or even sometimes by discontinuing such drugs, particularly mycophenolate, and switching toward less aggressive antiproliferative and corticosteroids therapies <sup>31-33</sup>. This could indirectly be the cause of the increased graft failure risk. This observation suggests that limited use of immunosuppressive therapy due to lymphopenia may amplify the phenomenon, because of the higher risk of graft failure, death and viral infection. It is of note that our model was only adjusted for maintenance therapies at 1-year posttransplantation and did not account for a potential switch in therapy. A randomized trial in lymphopenic patients comparing a steady dosage versus dose decrease could define what is more serious, the risk of infection or graft failure.

In contrast with previous data <sup>19</sup>, we also found that depleting therapy was associated with lower risk of death, but not with lower graft failure risk. After depleting induction therapy, complete immune reconstitution can take up to 2 years and depends on the baseline lymphocyte count <sup>34,35</sup>. Furthermore, even after normalization of the lymphocyte count, T cell function can still be

impaired, and this may prevent or minimize deleterious immunological events in the long term and even have a protective effect by tilting the balance in favor of a pro-tolerogenic environment as shown for several therapies <sup>36,37</sup>. Nevertheless, with respect to our data, we may have expected that depleting induction therapy would have induced lymphopenia and thus higher risk of graft failure. The fact that we cannot make this direct link suggests a biological role independent of its basic lymphodepleting effect. Finally, induction therapy was neither associated with late onset viral infection (whereas lymphopenia was) nor cancer risk, reinforcing this hypothesis.

Our study has several limitations. For this large-scale analysis, we chose to perform a retrospective study, including the inherent biases. The missing data and patients lost to follow-up that we reported were not random leading to the exclusion from the multivariate models of patients who showed demographic differences from included patients. Additionally, we were only able to collect and analyze data that are routinely collected. As a consequence, only “for purpose” lymphocyte counts were available during the first year of transplantation, and thus were not analyzed to avoid bias in our study, even though they could be an interesting early marker of immunosuppression level. The occurrence of CMV viremia during the first year is also regarded as a marker of overimmunosuppression <sup>11,12</sup>, even if which comes first between infection and lymphopenia is controversial. We observed no difference in the proportion of patients who developed a CMV infection within the first year posttransplantation regardless of lymphocyte count they belonged to, allowing us to exclude CMV infection from those factors that are affected by a lymphopenic state (at least at one year). Another consequence is that the complete blood count only included the total lymphocyte count with no phenotyping of lymphocyte subsets, as this analysis is not routinely performed, and we were limited by the number of samples for each patient. The elevated graft and patient survivals observed in this study can be explained by a selection bias, since all patients and grafts survived the first year of transplantation, and were regularly followed up in University Hospital. In addition, therapeutic interventions following immunological or infectious

events that could modify lymphocyte counts within the follow-up period could be possible confounders. Unfortunately, this information was not available for the whole cohort, and this is an additional limitation of our interpretations. Finally, an external validation of our results is of primary importance, as we were unable to find such a cohort for validation; however our study was bicentric which should limit the single-centre bias. A prospective study could improve on our study and could include a detailed analysis of whole blood cell subset phenotypes but this would obviously increase its cost and length.

In conclusion, the occurrence of deep lymphopenia in patient beyond one year of transplantation is a risk factor for long-term graft failure, death and viral infection. Such a finding should alert physicians to modify immunosuppressive therapies or to reinforce the monitoring of these at-risk patients.

# **PATIENTS AND METHODS**

## **Population**

Data were extracted from the prospective DIVAT cohort of kidney transplant recipients from Nantes and Necker university hospitals. In total, 2,999 adult recipients who received either a single kidney transplant or a simultaneous kidney-pancreas transplant between January 2000 and December 2016 and alive with a functioning graft at 1-year posttransplantation were enrolled. HIV-positive patients, patients with no lymphocyte count or a single lymphocyte count available after 1-year posttransplantation, and patients diagnosed with posttransplant lymphoproliferative disorders or leukemia were excluded.

## **Clinical and biological data**

Classical risk factors likely to influence lymphocyte count changes and/or graft failure and/or patient risk of death were extracted from the database. Donor features included age, sex, living or deceased status, heart-beating vs non-heart-beating status, CMV serology, and extended criteria donor data <sup>38,39</sup>. The recipient characteristics were age, sex, history of comorbidities, CMV serology, initial nephropathy, pretransplant dialysis method, pretransplant anti-HLA immunization (defined as positive if at least one DSA was identified by Luminex® Single Antigen Bead technology within the 6 months pretransplantation, unless if at least one DSA was not identified but a later determination performed by Luminex® screening or other technology (ELISA or CDC) was positive in pretransplantation), induction therapy (depleting vs nondepleting) and initial maintenance therapy. The transplantation parameters were type of transplantation (kidney vs simultaneous pancreas-kidney), rank, cold ischemia time and number of HLA-A/B/DR mismatches. The following variables were collected within the first year posttransplantation: occurrence of delayed graft function, occurrence of BPAR, daily proteinuria and serum creatinine at one year posttransplantation. Any occurrence of viral infection, cancer (including nonsolid cancer and

squamous cell and basal cell skin cancers) or any type of BPAR during the follow-up was also noted. Finally, circulating lymphocyte counts at one year posttransplantation and all subsequent counts were noted. For an easier clinical interpretation, we defined “a priori” relevant thresholds instead of considering the lymphocyte level as a continuous variable. Thus, according to the laboratory boundaries, the lymphocyte count was classified as normal (between 1,500 and 4,000 /mm<sup>3</sup>, deep lymphopenia (lower than 750 /mm<sup>3</sup> - half of 1,500 - according to empirical evaluation based on the Common Terminology Criteria for Adverse Events (CTCAE))<sup>20</sup> or mild lymphopenia (between 750 and 1,500 /mm<sup>3</sup>).

## Statistics

Our main objective was to investigate the etiological relationship between time-dependent lymphocyte count and graft or patient survival. To avoid confounding results, all variables differentially distributed between lymphocyte count-based groups which were not consequences of lymphocyte count were included in multivariate models. Graft survival analysis was based on the time between one year posttransplantation and return to dialysis, and patient survival analysis was based on the time between one year posttransplantation and death with a functioning graft. Patients were observed only after one year of transplantation, when lymphocyte counts were assumed to have begun to steady, rather than within the first year, during which many factors impact the lymphocyte count, for instance induction therapy, antibiotic and anti-viral prophylaxis, or frequent acute rejection treatments. Our secondary objective was to assess the relationship between time-dependent lymphocyte counts and acute rejection, viral infection or cancer risks.

Analyses were performed in two steps. First, possible risk factors associated with the time-to-event of interest were selected by univariate analysis (log-rank test,  $p \leq 0.20$ ). If the log-linearity assumption was unconfirmed, the variable was categorized according to thresholds traditionally used in the literature. The selected variables and confounding factors (induction and maintenance treatments) were further analyzed in a multivariate time-dependent Cox model<sup>40</sup>. A cause-specific

hazards approach was used for survival data, as our etiological study aimed to describe the causal effect of the number of lymphocytes <sup>41,42</sup>, and lymphocyte count was analyzed as a time-dependent variable since several counts per patient were performed during the follow-up. To account for the temporal relationship between lymphocyte count and outcomes, we employed a Cox model that considered time-dependent measures of lymphocyte count with multiple changes updated during the patient follow-up <sup>43</sup>. Because lymphocyte count could be a marker for other dynamic processes and particularly renal function, we generated two models for each multivariate Cox analyses of the risk of graft failure (death censored), death (graft failure censored), cancer and viral infection (death and graft failure censored). Model 1 considered the renal function (eGFR) at one year and model 2 considered eGFR as time-dependent. Some interactions between explicative variables were tested according to relevant clinical interpretations. Nonsignificant variables were progressively removed respecting a step-by-step backward selection method ( $p < 0.05$ ). Thereafter, clinically relevant interactions were tested. The proportional hazard assumption was evaluated by plotting log-minus-log survival curves and by analyzing the scaled Schoenfeld residuals <sup>44</sup>. During the descending procedure, lymphocyte count and confounding factors were the only variables maintained in the model regardless of the corresponding p-values. For the secondary analysis, we also performed separate multivariate time-dependent Cox analyses to study the relationship between time-dependent lymphocyte count and the risk of 1) acute rejection, 2) viral infection or 3) cancer. All analyses were performed using R software V3.3.1.

## **ABBREVIATIONS**

ATG, anti-thymoglobulin

BKV, BK virus

BPAR, Biopsy proven acute rejection

CD4 (CD8), cluster of differentiation 4 (8)

CMV, cytomegalovirus

CNI, calcineurin inhibitor

DIVAT, données informatisées et validées en transplantation (computerized and validated data in transplantation)

DSA, donor specific antibody

HIV, human immunodeficiency virus

HSV, Herpes simplex virus

HLA, human leukocyte antigen

mTOR, mechanistic target of rapamycin

PRA, panel-reactive antibody

VZV, Varicella zoster virus

## FUNDING INFORMATION

This work was supported by the CENTAURE foundation ([www.fondation-centaure.org](http://www.fondation-centaure.org)), which supports a French transplantation research network, the IHU-Cesti project, the DHU Oncogreff, the ANR project BIKET (ANR-17-CE17-0008) and the LabEX IGO thanks to French government financial support managed by the National Research Agency via the “Investment into the Future” program (ANR-10-IBHU-005 and ANR-11- LABX-0016-01). The IHU-Cesti project is also supported by Nantes Métropole and Région Pays de la Loire. We thank the Roche Pharma, Novartis and Sanofi and Astellas laboratories for supporting the DIVAT cohort.

## DISCLOSURE

The authors declare conflict of interest with Roche Pharma, Novartis and Sanofi and Astellas laboratories for supporting the DIVAT cohort.

**\*\* Données Informatisées et Validées en Transplantation, DIVAT Cohort Collaborators (Medical Doctors, Surgeons, HLA Biologists)**

**Nantes :** Gilles Blancho, Julien Branchereau, Diego Cantarovich, Agnès Chapelet, Jacques Dantal, Clément Deltombe, Lucile Figueres, Claire Garandeau, Magali Giral, Caroline Gourraud-Vercel, Maryvonne Hourmant, Georges Karam, Clarisse Kerleau, Aurélie Meurette, Simon Ville, Christine Kandell, Anne Moreau, Karine Renaudin, Anne Cesbron, Florent Delbos, Alexandre Walencik, Anne Devis ; **Paris-Necker :** Lucile Amrouche, Dany Anglicheau, Olivier Aubert, Lynda Bererhi, Christophe Legendre, Alexandre Loupy, Frank Martinez, Rébecca Sberro-Soussan, Anne Scemla, Claire Tinel, Julien Zuber.

## AUTHORS' CONTRIBUTIONS

Amaury Dujardin: Conceptualization, Methodology, Formal analysis, Writing - original draft, review and editing. Magali Giral: Conceptualization, Methodology, Writing - review and editing. Sophie Brouard: Conceptualization, Methodology, Writing - review and editing. Marine Lorent and Yohann Foucher : Biostatistic analysis, Writing - review and editing. Christophe Legendre : Data acquisition, Writing - review and editing. Clarisse Kerleau: data management.

## **ACKNOWLEDGMENTS**

This study has been registered with French Research Ministry: RC12\_0452, last agreement N°13334, CNIL N° for the cohort: 891735.

We wish to thank the clinical research assistants S. Le Floch, A. Petit, P. Przednowed. We also thank the Centre de Ressource Biologique of the Nantes University Hospital.

## FIGURES AND TABLES

**Figure 1.** Flow-chart of the study.

**Figure 2.** Boxplot representing the evolution of lymphocyte counts distribution at each year post-transplantation for the whole cohort.

**Figure 3A.** Representation of intra-patient variability of lymphocyte counts, assessed by considering a representative 5% sample of randomly selected patients. Each colored line represents a separate patient.

**Figure 3B.** Frequency of switching from one lymphocyte group to another all over the study follow-up.

**Table 1.** Description of recipient, donor, and transplantation characteristics of the global study population (qualitative variables).

**Table 2.** Description of recipient, donor, and transplantation characteristics of the global study population (quantitative variables).

**Table 3.** Cox unadjusted analyses and Cox multivariate analysis of graft failure risk (with death-censored) with lymphocyte count as time-dependent variable (738 patients were removed from the analysis because of missing data as detailed in Table S3 and S4).

**Table 4.** Cox unadjusted analyses and Cox multivariate analysis of patient death risk (with a functioning graft) with lymphocyte count as time-dependent variable (374 patients were removed from the analysis because of missing data as detailed in Table S5 et S6).

**Table 5.** Cox multivariate analysis of viral infection risk (with death and return to dialysis censored) with lymphocyte count as time-dependent variable (344 patients were removed from the analysis because of missing data).

**Table 6.** Cox multivariate analysis of cancer risk (with death and return to dialysis censored) with lymphocyte count as time-dependent variable.

**Table 7.** Cox multivariate analyses per center (Nantes: n= 1632, Paris Necker: n=1367).

## SUPPLEMENTARY MATERIAL

**Figure S1.** Kinetics of lymphocytes count prior to “graft failure” event. Each colored line represents a patient that presented a graft failure during follow-up.

**Figure S2.** Kinetics of lymphocytes count prior to “death” event. Each colored line represents a patient that died during follow-up.

**Figure S3.** Death-censored graft survival probability in function of the time since the transplantation from Kaplan–Meier estimator (solid line), and their corresponding 95% confidence intervals (dashed lines).

**Figure S4.** Patient survival probability in function of the time since the transplantation from Kaplan–Meier estimator (solid line), and their corresponding 95% confidence intervals (dashed lines).

**Table S1.** Details of the type of acute rejection episodes after one year of transplantation.

**Table S2.** Details of the type of cancers and of principal viral infections after one year of transplantation.

**Table S3.** Difference between excluded and included patients from Cox multivariate analysis of graft failure risk (quantitative variables). Results are presented as mean  $\pm$  SD.

**Table S4.** Difference between excluded and included patients from Cox multivariate analysis of graft failure risk (qualitative variables). Results are presented as effective numbers (with percentages).

**Table S5.** Difference between excluded and included patients from Cox multivariate analysis of death risk (quantitative variables). Results are presented as mean  $\pm$  SD.

**Table S6.** Difference between excluded and included patients from Cox multivariate analysis of death risk (qualitative variables). Results are presented as effective numbers (with percentages).

**Table S7.** Cox multivariate analysis of patient death risk (with a functioning graft) with lymphocyte count at 1-year post-transplantation.

**Table S8.** Cox multivariate analysis of graft failure risk (with death-censored) with lymphocyte count at 1-year post-transplantation. (734 patients were removed from the analysis because of missing data).

**Table S9.** Cox multivariate analysis of viro-induced skin cancer (with death and return to dialysis censored) with or without the lymphocyte count as time-dependent variable.

**Supplementary information is available at *Kidney International*’s website.**

# REFERENCES

1. Coemans M, Süsal C, Döhler B, et al. Analyses of the short- and long-term graft survival after kidney transplantation in Europe between 1986 and 2015. *Kidney Int.* 2018;94(5):964-973. doi:10.1016/j.kint.2018.05.018
2. Bonnefoy-Berard N, Verrier B, Vincent C, et al. Inhibition of CD25 (IL-2R alpha) expression and T-cell proliferation by polyclonal anti-thymocyte globulins. *Immunology.* 1992;77(1):61-67.
3. Alamartine E, Bellakoul R, Berthoux F. Randomized prospective study comparing OKT3 and antithymocyte globulins for treatment of the first acute cellular rejection of kidney allografts. *Transplant Proc.* 1994;26(1):273-274.
4. Souillou J-P, Cantarovich D, Le Mauff B, et al. Randomized Controlled Trial of a Monoclonal Antibody against the Interleukin-2 Receptor (33B3.1) as Compared with Rabbit Antithymocyte Globulin for Prophylaxis against Rejection of Renal Allografts. *N Engl J Med.* 1990;322(17):1175-1182. doi:10.1056/NEJM199004263221702
5. Gurkan S, Luan Y, Dhillon N, et al. Immune reconstitution following rabbit antithymocyte globulin. *Am J Transplant Off J Am Soc Transplant Am Soc Transpl Surg.* 2010;10(9):2132-2141. doi:10.1111/j.1600-6143.2010.03210.x
6. Lanio N, Sarmiento E, Gallego A, et al. Kinetics of functionally distinct T-lymphocyte subsets in heart transplant recipients after induction therapy with anti-CD25 monoclonal antibodies. *Transpl Immunol.* 2013;28(4):176-182. doi:10.1016/j.trim.2013.04.005
7. Dantal J, Morelon E, Rostaing L, et al. Sirolimus for Secondary Prevention of Skin Cancer in Kidney Transplant Recipients: 5-Year Results. *J Clin Oncol Off J Am Soc Clin Oncol.* 2018;36(25):2612-2620. doi:10.1200/JCO.2017.76.6691
8. Ekberg H, Tedesco-Silva H, Demirbas A, et al. Reduced exposure to calcineurin inhibitors in renal transplantation. *N Engl J Med.* 2007;357(25):2562-2575. doi:10.1056/NEJMoa067411
9. Thaunat O. Finding the safe place between the hammer and the anvil: sounding the depth of therapeutic immunosuppression. *Kidney Int.* 2015;88(6):1226-1228. doi:10.1038/ki.2015.268
10. Wiebe C, Gibson IW, Blydt-Hansen TD, et al. Evolution and clinical pathologic correlations of de novo donor-specific HLA antibody post kidney transplant. *Am J Transplant Off J Am Soc Transplant Am Soc Transpl Surg.* 2012;12(5):1157-1167. doi:10.1111/j.1600-6143.2012.04013.x
11. Nierenberg NE, Poutsika DD, Chow JK, et al. Pretransplant lymphopenia is a novel prognostic factor in cytomegalovirus and noncytomegalovirus invasive infections after liver transplantation. *Liver Transplant Off Publ Am Assoc Study Liver Dis Int Liver Transplant Soc.* 2014;20(12):1497-1507. doi:10.1002/lt.23991
12. Gardiner BJ, Nierenberg NE, Chow JK, et al. Absolute Lymphocyte Count: A Predictor of Recurrent Cytomegalovirus Disease in Solid Organ Transplant Recipients. *Clin Infect Dis Off Publ Infect Dis Soc Am.* 2018;67(9):1395-1402. doi:10.1093/cid/ciy295

13. Chenouard A, Chesneau M, Bui Nguyen L, et al. Renal Operational Tolerance Is Associated With a Defect of Blood Tfh Cells That Exhibit Impaired B Cell Help. *Am J Transplant*. 2017;17(6):1490-1501. doi:10.1111/ajt.14142
14. Cano-Romero FL, Laguna Goya R, Utrero-Rico A, et al. Longitudinal profile of circulating T follicular helper lymphocytes parallels anti-HLA sensitization in renal transplant recipients. *Am J Transplant Off J Am Soc Transplant Am Soc Transpl Surg*. June 2018. doi:10.1111/ajt.14987
15. Suarez JF, Rosa R, Lorio MA, et al. Pretransplant CD4 Count Influences Immune Reconstitution and Risk of Infectious Complications in Human Immunodeficiency Virus-Infected Kidney Allograft Recipients. *Am J Transplant Off J Am Soc Transplant Am Soc Transpl Surg*. 2016;16(8):2463-2472. doi:10.1111/ajt.13782
16. Ducloux D, Carron PL, Rebibou JM, et al. CD4 lymphocytopenia as a risk factor for skin cancers in renal transplant recipients. *Transplantation*. 1998;65(9):1270-1272.
17. Ducloux D, Challier B, Saas P, et al. CD4 cell lymphopenia and atherosclerosis in renal transplant recipients. *J Am Soc Nephrol JASN*. 2003;14(3):767-772.
18. Ducloux D, Courivaud C, Bamoulid J, et al. Prolonged CD4 T cell lymphopenia increases morbidity and mortality after renal transplantation. *J Am Soc Nephrol JASN*. 2010;21(5):868-875. doi:10.1681/ASN.2009090976
19. Luque Y, Jamme M, Rabant M, et al. Long-term CD4 lymphopenia is associated with accelerated decline of kidney allograft function. *Nephrol Dial Transplant Off Publ Eur Dial Transpl Assoc - Eur Ren Assoc*. 2016;31(3):487-495. doi:10.1093/ndt/gfv362
20. US Department of Health and Human Services. Common Terminology Criteria for Adverse Events (CTCAE). V4.03. 2010. [https://evs.nci.nih.gov/ftp1/CTCAE/CTCAE\\_4.03/CTCAE\\_4.03\\_2010-06-14\\_QuickReference\\_5x7.pdf](https://evs.nci.nih.gov/ftp1/CTCAE/CTCAE_4.03/CTCAE_4.03_2010-06-14_QuickReference_5x7.pdf) .
21. Ducloux D, Carron PL, Racadot E, et al. CD4 lymphocytopenia in long-term renal transplant recipients. *Transplant Proc*. 1998;30(6):2859-2860.
22. Canet E, Zafrani L, Azoulay É. The Critically Ill Kidney Transplant Recipient: A Narrative Review. *Chest*. 2016;149(6):1546-1555. doi:10.1016/j.chest.2016.01.002
23. Halim MA, Al-Otaibi T, Gheith O, et al. Long-Term Follow-Up of Active Treatment Versus Minimization of Immunosuppressive Agents in Patients With BK Virus-Associated Nephropathy After Kidney Transplant. *Exp Clin Transplant Off J Middle East Soc Organ Transplant*. 2016;14(1):58-65.
24. Montero N, Pérez-Sáez MJ, Pascual J, et al. Immunosuppression in the elderly renal allograft recipient: a systematic review. *Transplant Rev Orlando Fla*. 2016;30(3):144-153. doi:10.1016/j.ttre.2016.05.001
25. Caillard S, Lamy FX, Quelen C, et al. Epidemiology of Posttransplant Lymphoproliferative Disorders in Adult Kidney and Kidney Pancreas Recipients: Report of the French Registry and Analysis of Subgroups of Lymphomas: PTLTD French Registry. *Am J Transplant*. 2012;12(3):682-693. doi:10.1111/j.1600-6143.2011.03896.x

26. Ducloux D, Carron P-L, Motte G, et al. Lymphocyte subsets and assessment of cancer risk in renal transplant recipients. *Transpl Int Off J Eur Soc Organ Transplant*. 2002;15(8):393-396. doi:10.1007/s00147-002-0410-4
27. Glowacki F, Al Morabiti M, Lionet A, et al. Long-term kinetics of a T-lymphocytes subset in kidney transplant recipients: relationship with posttransplant malignancies. *Transplant Proc*. 2009;41(8):3323-3325. doi:10.1016/j.transproceed.2009.09.033
28. Wu Z, Bensinger SJ, Zhang J, et al. Homeostatic proliferation is a barrier to transplantation tolerance. *Nat Med*. 2004;10(1):87-92. doi:10.1038/nm965
29. Louis S, Audrain M, Cantarovich D, et al. Long-term cell monitoring of kidney recipients after an antilymphocyte globulin induction with and without steroids. *Transplantation*. 2007;83(6):712-721. doi:10.1097/01.tp.0000255683.66156.d3
30. Naesens M, Kuypers DRJ, Sarwal M. Calcineurin inhibitor nephrotoxicity. *Clin J Am Soc Nephrol CJASN*. 2009;4(2):481-508. doi:10.2215/CJN.04800908
31. Moes DJAR, Guchelaar H-J, de Fijter JW. Sirolimus and everolimus in kidney transplantation. *Drug Discov Today*. 2015;20(10):1243-1249. doi:10.1016/j.drudis.2015.05.006
32. Hartmann EL, Gatesman M, Roskopf-Somerville J, et al. Management of leukopenia in kidney and pancreas transplant recipients. *Clin Transplant*. 2008;22(6):822-828. doi:10.1111/j.1399-0012.2008.00893.x
33. Shin BC, Chung JH, Kim HL. Sirolimus: a switch option for mycophenolate mofetil-induced leukopenia in renal transplant recipients. *Transplant Proc*. 2013;45(8):2968-2969. doi:10.1016/j.transproceed.2013.08.040
34. Müller TF, Grebe SO, Neumann MC, et al. Persistent long-term changes in lymphocyte subsets induced by polyclonal antibodies. *Transplantation*. 1997;64(10):1432-1437.
35. Carter JT, Melcher ML, Carlson LL, et al. Thymoglobulin-Associated Cd4+ T-Cell Depletion and Infection Risk in HIV-Infected Renal Transplant Recipients: Thymoglobulin in HIV-Infected Kidney Recipients. *Am J Transplant*. 2006;6(4):753-760. doi:10.1111/j.1600-6143.2006.01238.x
36. Morelon E, Lefrançois N, Besson C, et al. Preferential increase in memory and regulatory subsets during T-lymphocyte immune reconstitution after Thymoglobulin induction therapy with maintenance sirolimus vs cyclosporine. *Transpl Immunol*. 2010;23(1-2):53-58. doi:10.1016/j.trim.2010.04.004
37. Vacher-Coponat H, Brunet C, Moal V, et al. Tacrolimus/mycophenolate mofetil improved natural killer lymphocyte reconstitution one year after kidney transplant by reference to cyclosporine/azathioprine. *Transplantation*. 2006;82(4):558-566. doi:10.1097/01.tp.0000229390.01369.4a
38. Metzger RA, Delmonico FL, Feng S, et al. Expanded criteria donors for kidney transplantation. *Am J Transplant Off J Am Soc Transplant Am Soc Transpl Surg*. 2003;3 Suppl 4:114-125.

39. Querard A-H, Foucher Y, Combescure C, et al. Comparison of survival outcomes between Expanded Criteria Donor and Standard Criteria Donor kidney transplant recipients: a systematic review and meta-analysis. *Transpl Int Off J Eur Soc Organ Transplant*. 2016;29(4):403-415. doi:10.1111/tri.12736
40. Cox DR. Regression Models and Life-Tables. *J R Stat Soc Ser B Methodol*. 1972;34(2):187-220.
41. Andersen PK, Geskus RB, de Witte T, et al. Competing risks in epidemiology: possibilities and pitfalls. *Int J Epidemiol*. 2012;41(3):861-870. doi:10.1093/ije/dyr213
42. Sapir-Pichhadze R, Pintilie M, Tinckam KJ, et al. Survival Analysis in the Presence of Competing Risks: The Example of Waitlisted Kidney Transplant Candidates. *Am J Transplant Off J Am Soc Transplant Am Soc Transpl Surg*. 2016;16(7):1958-1966. doi:10.1111/ajt.13717
43. Desquilbet L, Meyer L. Time-dependent covariates in the Cox proportional hazards model. Theory and practice. *Rev Epidemiol Sante Publique*. 2005;53(1):51-68.
44. Grambsch PM, Therneau TM. Proportional hazards tests and diagnostics based on weighted residuals. *Biometrika*. 1994;81(3):515-526. doi:10.1093/biomet/81.3.515

## **DIVAT**

**N = 9,168** kidney transplant recipients registered in March 2018 in Nantes and Necker

409 patients with transplantation other than kidney or kidney-pancreas

3,123 patients transplanted before 01/01/2000 or after 31/12/2016

149 patients under 18 years of age

1,092 patients without a functioning graft at one year post transplantation

**N = 4,395** kidney transplant recipients met the inclusion criteria

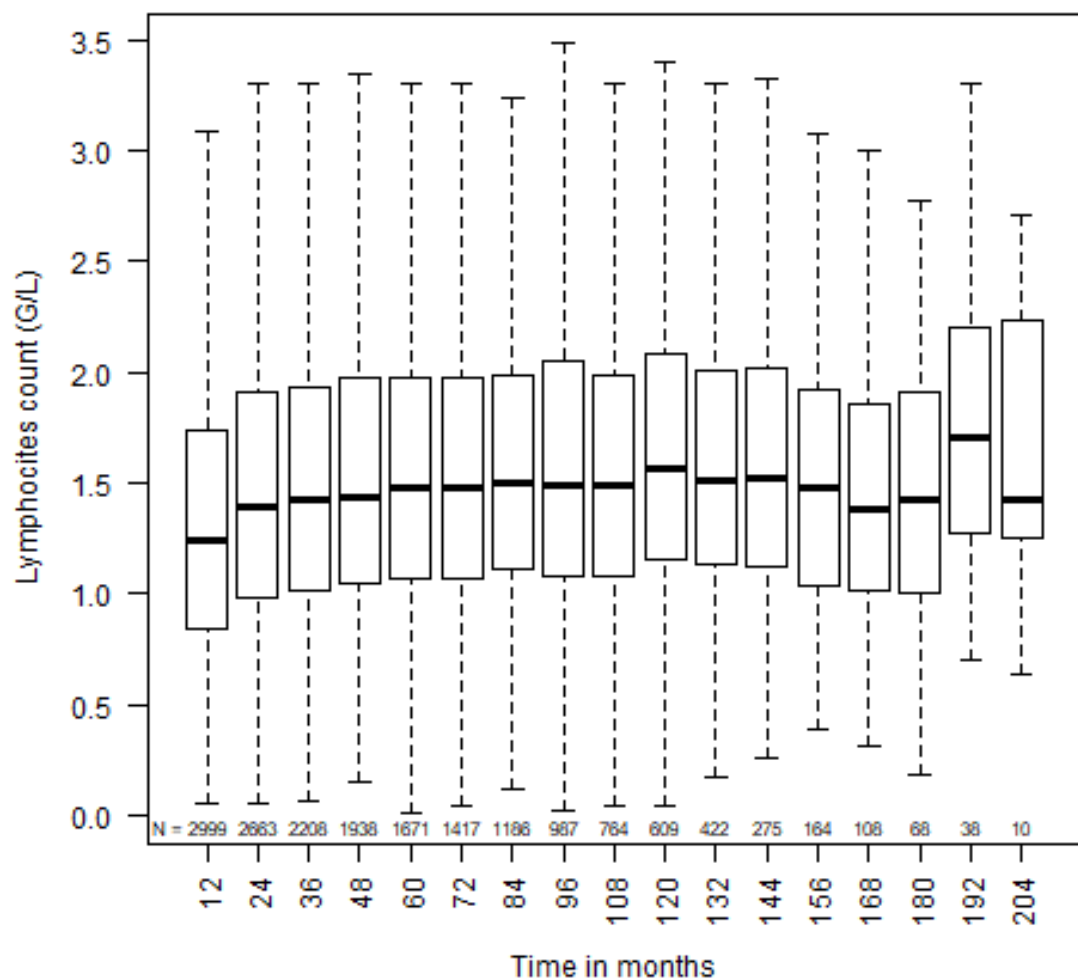
### **Exclusion criteria**

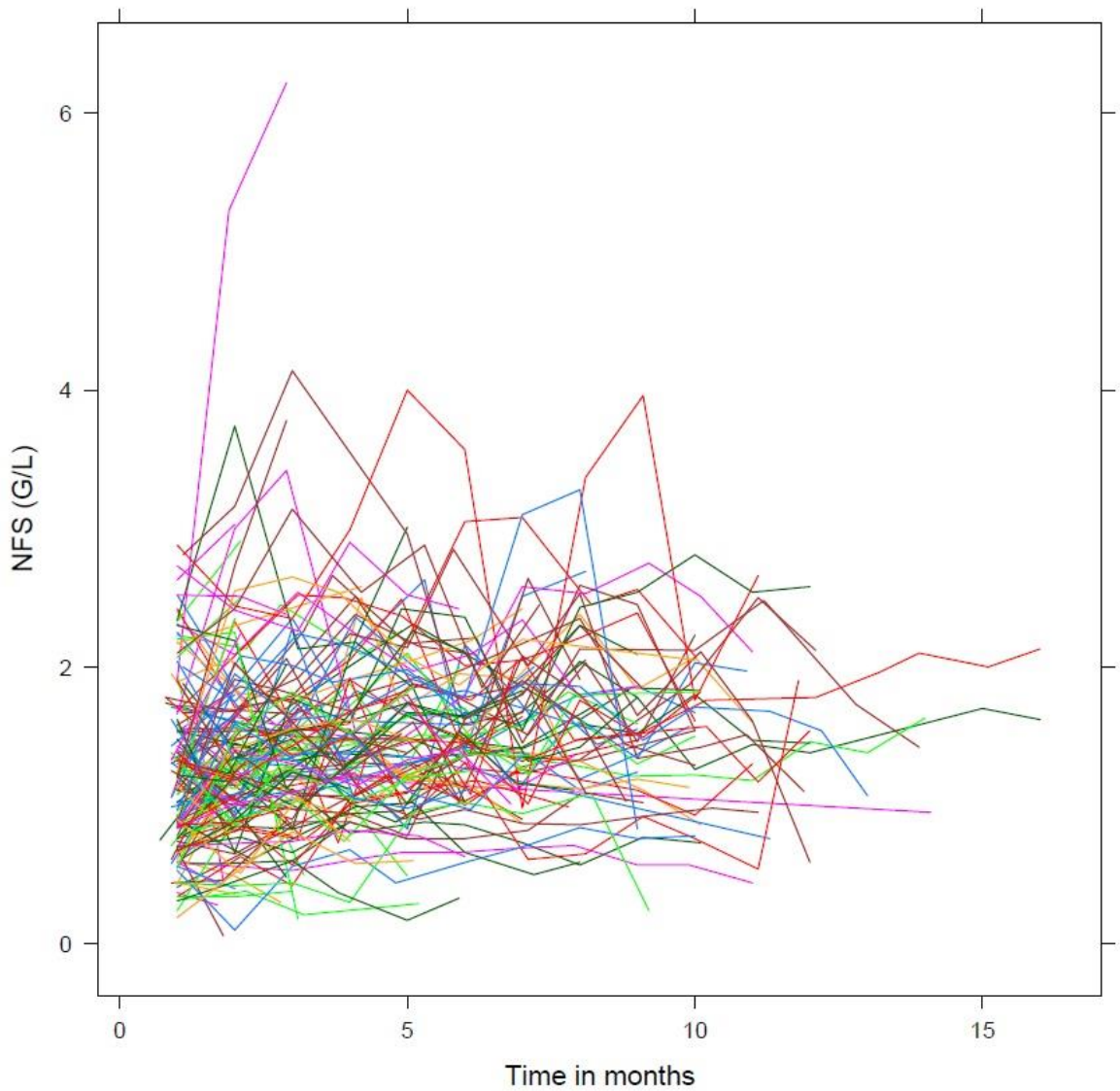
71 patients with positive HIV serology

1,276 patients with no lymphocyte count or a single lymphocyte count after 1-year post-transplantation

49 patients diagnosed with post-transplant lymphoproliferative disorder

**N = 2,999** kidney transplant recipients included in the study





| Switching sequences<br>Between groups | Frequence (n) | Switching sequences<br>Between groups | Frequence (n) |
|---------------------------------------|---------------|---------------------------------------|---------------|
| 1*                                    | 545           | 32121                                 | 13            |
| 2**                                   | 344           | 32123                                 | 2             |
| 3***                                  | 129           | 32132                                 | 1             |
| 12                                    | 169           | 32312                                 | 2             |
| 13                                    | 17            | 32321                                 | 4             |
| 21                                    | 378           | 32323                                 | 12            |
| 23                                    | 78            | 121212                                | 17            |
| 31                                    | 29            | 121231                                | 1             |
| 32                                    | 185           | 121312                                | 2             |
| 121                                   | 152           | 123121                                | 1             |
| 123                                   | 7             | 123212                                | 2             |
| 131                                   | 7             | 131212                                | 1             |
| 132                                   | 4             | 132121                                | 1             |
| 212                                   | 147           | 132323                                | 1             |
| 213                                   | 13            | 212121                                | 23            |
| 231                                   | 8             | 212123                                | 1             |
| 232                                   | 78            | 212321                                | 1             |
| 312                                   | 8             | 212323                                | 4             |
| 313                                   | 1             | 213121                                | 2             |
| 321                                   | 44            | 213212                                | 2             |
| 323                                   | 55            | 213232                                | 1             |
| 1212                                  | 60            | 231212                                | 2             |
| 1213                                  | 5             | 232323                                | 5             |
| 1231                                  | 1             | 312121                                | 1             |
| 1232                                  | 13            | 321212                                | 3             |
| 1321                                  | 4             | 321232                                | 3             |
| 2121                                  | 99            | 323212                                | 2             |
| 2123                                  | 10            | 323232                                | 8             |
| 2131                                  | 6             | 1212121                               | 9             |
| 2132                                  | 7             | 1212123                               | 2             |
| 2312                                  | 5             | 1212312                               | 1             |
| 2321                                  | 13            | 1212321                               | 1             |
| 2323                                  | 21            | 1232121                               | 1             |
| 3121                                  | 7             | 1312132                               | 1             |
| 3132                                  | 1             | 2121212                               | 4             |
| 3212                                  | 21            | 2121232                               | 4             |
| 3213                                  | 2             | 2121323                               | 1             |
| 3232                                  | 30            | 2123123                               | 1             |
| 12121                                 | 41            | 2123231                               | 1             |
| 12123                                 | 5             | 2323212                               | 1             |
| 12131                                 | 1             | 3121212                               | 1             |
| 12132                                 | 1             | 3212121                               | 1             |
| 12312                                 | 2             | 3212123                               | 1             |
| 12321                                 | 1             | 3232121                               | 1             |
| 13232                                 | 2             | 3232323                               | 2             |
| 21212                                 | 37            | 12121212                              | 4             |
| 21213                                 | 4             | 12121232                              | 1             |
| 21232                                 | 7             | 12323232                              | 1             |
| 21312                                 | 1             | 21212121                              | 4             |
| 21323                                 | 1             | 23212121                              | 1             |
| 23121                                 | 3             | 32121212                              | 1             |
| 23123                                 | 1             | 32323232                              | 1             |
| 23132                                 | 1             | 232121232                             | 1             |
| 23212                                 | 6             | 323212121                             | 1             |
| 23213                                 | 1             | 1321212121                            | 1             |
| 23231                                 | 1             |                                       |               |
| 23232                                 | 11            |                                       |               |
| 31212                                 | 2             |                                       |               |

**Table 1.** Description of recipient, donor, and transplantation characteristics of the global study population (qualitative variables).

| Characteristics                                  | Missing data |       | N=2999    |       |
|--|--------------|-------|-----------|-------|
|  | n            | %     | Effective | %     |
| <b>RECIPIENT</b>                                 |              |       |           |       |
| Male gender                                      | -            | -     | 1,814     | 60.49 |
| Rank of the graft $\geq 2$                       | -            | -     | 620       | 20.65 |
| Initial nephropathy: Glomerulonephritis          | -            | -     | 818       | 27.28 |
| Pyelonephritis                                   |              |       | 1197      | 39.91 |
| Vascular nephropathy                             |              |       | 177       | 5.90  |
| Diabetic nephropathy                             |              |       | 409       | 13.64 |
| Other disease and unknown                        |              |       | 398       | 13.27 |
| Replacement therapy: Preemptive transplantation  | -            | -     | 513       | 17.11 |
| Peritoneal dialysis                              |              |       | 201       | 6.70  |
| Hemodialysis                                     |              |       | 2,285     | 76.19 |
| Delayed Graft Function                           | 24           | 0.80  | 888       | 29.85 |
| Past history of diabetes                         | -            | -     | 588       | 19.61 |
| Past history of neoplasia                        | -            | -     | 317       | 10.57 |
| Positive CMV serology                            | 17           | 0.57  | 1,718     | 57.61 |
| <b>DONOR</b>                                     |              |       |           |       |
| Positive CMV serology                            | 13           | 0.43  | 1,518     | 50.84 |
| Male gender                                      | 1            | 0.03  | 1,694     | 56.50 |
| Type of donor: Living                            | 1            | 0.03  | 533       | 17.78 |
| Heart beating                                    |              |       | 2,410     | 80.39 |
| Non heart-beating                                |              |       | 55        | 1.83  |
| ECD  | 555          | 18.51 | 951       | 38.91 |
| <b>TREATMENTS</b>                                |              |       |           |       |
| Maintenance immunosuppressive by CNI             | -            | -     | 2,909     | 96.97 |
| Maintenance immunosuppressive by mTOR inhibitor  | -            | -     | 146       | 4.87  |
| Maintenance immunosuppressive by MMF/MPA/AZA     | -            | -     | 2,831     | 94.39 |
| Maintenance immunosuppressive by Corticosteroids | -            | -     | 2,600     | 86.70 |
| Induction: No induction                          | -            | -     | 113       | 3.77  |
| Non depletant therapy                            |              |       | 1,630     | 54.35 |
| Depletant therapy                                |              |       | 1,256     | 41.88 |
| <b>IMMUNOLOGY</b>                                |              |       |           |       |
| Number of HLA-A/B/DR mismatches $>4$             | 5            | 0.17  | 515       | 17.20 |
| Positive anti-class I HLA antigens               | 339          | 11.29 | 973       | 36.57 |
| Positive anti-class II HLA antigens              | 419          | 13.96 | 964       | 37.36 |
| Pretransplantation DSA                           | 863          | 28.75 | 332       | 15.54 |
| Rejection in the 1st year post-transplantation   | -            | -     | 552       | 18.40 |

**Table 2.** Description of recipient, donor, and transplantation characteristics of the global study population (quantitative variables).

| Characteristics  | Missing data |       | N=2999  |        |      |       |
|--|--------------|-------|---------|--------|------|-------|
|  | n            | %     | Mean    | SD     | Min  | Max   |
| Recipient age (years)  | -            | -     | 48.31   | 13.69  | 18   | 84    |
| Cold ischemia time (min)   | 2            | 0.07  | 1021.82 | 593.66 | 30   | 2915  |
| Donor age (years)  | -            | -     | 50.41   | 15.68  | 3    | 88    |
| 1-year daily proteinuria (g.L <sup>-1</sup> )                    | 441          | 14.69 | 0.36    | 0.63   | 0    | 10.16 |
| 1-yr serum creatinine (μmol.L <sup>-1</sup> )                    | 6            | 0.20  | 135.32  | 49.05  | 36   | 555   |
| 1-year number of circulating lymphocytes (Giga.L <sup>-1</sup> ) | -            | -     | 1.38    | 0.78   | 0.06 | 7.86  |
| 2-year number of circulating lymphocytes (Giga.L <sup>-1</sup> ) | 336          | 11.19 | 1.54    | 0.83   | 0.06 | 8.3   |
| 3-year number of circulating lymphocytes (Giga.L <sup>-1</sup> ) | 794          | 26.45 | 1.57    | 0.82   | 0.07 | 9.88  |
| 4-year number of circulating lymphocytes (Giga.L <sup>-1</sup> ) | 1064         | 35.44 | 1.60    | 0.82   | 0.15 | 12.11 |
| 5-year number of circulating lymphocytes (Giga.L <sup>-1</sup> ) | 1331         | 44.34 | 1.61    | 0.79   | 0.01 | 7.48  |
| 6-year number of circulating lymphocytes (Giga.L <sup>-1</sup> ) | 2393         | 79.71 | 1.69    | 0.84   | 0.04 | 10.18 |

**Table 3.** Cox unadjusted analyses and Cox multivariate analysis of graft failure risk (with death-censored) with lymphocyte count as time-dependent variable (738 patients were removed from the analysis because of missing data as detailed in Table S3 and S4).

|   | Unadjusted Cox models |           |         | Cox model 1 |           |         | Cox model 2 |           |         |
|---|-----------------------|-----------|---------|-------------|-----------|---------|-------------|-----------|---------|
|   | HR                    | 95% CI    | P-value | HR          | 95% CI    | P-value | HR          | 95% CI    | P-value |
| Number of lymphocytes (ref >1.500 G/L) (normal) |                       |           |         |             |           |         |             |           |         |
| ≤ 0.750 (severe lymphopenia)                    | 3.54                  | 2.73-4.60 | <0.001  | 3.18        | 2.29-4.44 | <0.001  | 2.21        | 1.58-3.09 | <0.001  |
| ]0.750-1.500] (mild lymphopenia)                | 1.45                  | 1.16-1.80 | <0.001  | 1.30        | 0.99-1.71 | 0.057   | 1.20        | 0.92-1.58 | 0.184   |
| <b>TRANSPLANTATION</b>                          |                       |           |         |             |           |         |             |           |         |
| Kidney-pancreas transplantation                 | 0.85                  | 0.60-1.20 | 0.343   | -           | -         | -       | -           | -         | -       |
| Graft rank (>1 versus 1)                        | 1.53                  | 1.22-1.91 | <0.001  | 1.36        | 0.99-1.88 | 0.061   | 1.25        | 0.89-1.75 | 0.193   |
| Cold ischemia time (hours)                      | 1.02                  | 1.01-1.03 | <0.001  | -           | -         | -       | -           | -         | -       |
| Number of dialysis post-transplantation > 1     | 1.76                  | 1.45-2.13 | <0.001  | -           | -         | -       | -           | -         | -       |
| <b>DONOR</b>                                    |                       |           |         |             |           |         |             |           |         |
| Donor age (ref ≤50 years)                       |                       |           |         |             |           |         |             |           |         |
| 51-60 years                                     | 1.17                  | 0.93-1.51 |         | -           | -         | -       | -           | -         | -       |
| > 60 years                                      | 1.76                  | 1.40-2.21 |         | -           | -         | -       | -           | -         | -       |
| Donor gender (men vs women)                     | 0.99                  | 0.81-1.20 | 0.901   | -           | -         | -       | -           | -         | -       |
| Deceased donor                                  | 1.73                  | 1.25-2.40 | 0.001   | -           | -         | -       | -           | -         | -       |
| Type of donor (ref living donor)                |                       |           |         |             |           |         |             |           |         |
| Heart-beating                                   | 1.73                  | 1.25-2.40 |         | -           | -         | -       | -           | -         | -       |
| Non-heart-beating                               | 2.32                  | 0.92-5.90 |         | -           | -         | -       | -           | -         | -       |
| Positive CMV serology                           | 1.12                  | 0.93-1.36 | 0.19    | -           | -         | -       | -           | -         | -       |
| <b>RECIPIENT</b>                                |                       |           |         |             |           |         |             |           |         |
| Recipient age (> 55 vs ≤55 years)               | 1.30                  | 1.05-1.60 | 0.014   | 1.07        | 0.83-1.37 | 0.604   | 1.25        | 0.68-1.14 | 0.327   |
| Recipient gender (men vs women)                 | 0.91                  | 0.75-1.11 | 0.369   | -           | -         | -       | -           | -         | -       |
| Initial nephropathy (ref Glomerulonephritis)    |                       |           |         |             |           |         |             |           |         |
| Diabetic nephropathy                            | 1.04                  | 0.77-1.41 |         | -           | -         | -       | -           | -         | -       |
| Vascular nephropathy                            | 1.02                  | 0.65-1.61 |         | -           | -         | -       | -           | -         | -       |
| Pyelonephritis / interstitial nephritis         | 0.96                  | 0.76-1.21 |         | -           | -         | -       | -           | -         | -       |
| Other disease and unknown causes                | 0.90                  | 0.65-1.24 |         | -           | -         | -       | -           | -         | -       |
| Dialysis technique (ref pre-emptive)            |                       |           |         |             |           |         |             |           |         |
| Peritoneal                                      | 1.10                  | 0.65-1.87 |         | -           | -         | -       | -           | -         | -       |
| Hemodialysis                                    | 1.40                  | 1.04-1.89 |         | -           | -         | -       | -           | -         | -       |
| History of diabetes (yes vs no)                 | 1.33                  | 1.06-1.67 | 0.013   | 1.30        | 0.98-1.73 | 0.067   | 1.18        | 0.90-1.57 | 0.231   |
| History of neoplasia (yes vs no)                | 1.05                  | 0.74-1.50 | 0.777   | -           | -         | -       | -           | -         | -       |
| Positive CMV serology                           | 0.87                  | 0.72-1.05 | 0.149   | -           | -         | -       | -           | -         | -       |
| <b>IMMUNOLOGY</b>                               |                       |           |         |             |           |         |             |           |         |
| HLA-ABDR mismatches >4                          | 1.28                  | 1.01-1.63 | 0.038   | 1.29        | 0.96-1.74 | 0.093   | 1.27        | 0.93-1.73 | 0.129   |
| Positive Panel-Reactive Antibody anti-class I   | 1.72                  | 1.37-2.17 | <0.001  | 1.63        | 1.23-2.15 | 0.001   | 1.32        | 0.99-1.75 | 0.054   |
| Positive Panel-Reactive Antibody anti-class II  | 1.33                  | 1.05-1.69 | 0.017   | -           | -         | -       | -           | -         | -       |
| <b>INITIAL TREATMENT</b>                        |                       |           |         |             |           |         |             |           |         |
| Induction therapy (depleting vs non-depleting)  | 1.32                  | 1.09-1.60 | 0.004   | 0.88        | 0.67-1.15 | 0.343   | 0.96        | 0.73-1.26 | 0.771   |
| Maintenance therapy                             |                       |           |         |             |           |         |             |           |         |
| Calcineurin inhibitor                           | 1.72                  | 0.99-2.99 | 0.055   | 1.71        | 0.80-3.69 | 0.166   | 1.06        | 0.50-2.25 | 0.872   |
| mTOR inhibitor                                  | 1.26                  | 0.81-1.95 | 0.309   | 2.15        | 1.03-4.49 | 0.040   | 1.61        | 0.72-3.59 | 0.245   |
| Antiproliferative drug                          | 0.81                  | 0.55-1.19 | 0.288   | 1.03        | 0.57-1.89 | 0.913   | 0.98        | 0.49-1.95 | 0.956   |
| Prednisone                                      | 0.86                  | 0.67-1.11 | 0.253   | 0.76        | 0.56-1.02 | 0.073   | 0.74        | 0.54-1.02 | 0.067   |
| <b>TIME-DEPENDENT PARAMETERS</b>                |                       |           |         |             |           |         |             |           |         |
| eGFR* (per 10 ml/min)                           | 0.63                  | 0.59-0.68 | <0.001  | 0.67        | 0.62-0.72 | <0.001  | 0.19        | 0.16-0.22 | <0.001  |
| 1-year daily proteinuria (g.L <sup>-1</sup> )   | 1.39                  | 1.31-1.48 | <0.001  | 1.32        | 1.22-1.43 | <0.001  | 1.08        | 0.98-1.19 | 0.105   |
| Rejection in the 1st year post-transplantation  | 1.71                  | 1.38-2.12 | <0.001  | 1.28        | 0.98-1.67 | 0.007   | 1.18        | 0.91-1.56 | 0.210   |

\* The eGFR was considered at 1-year for the unadjusted analyses and the model 1 and as time-dependent marker for the model 2.

**Table 5.** Cox multivariate analysis of viral infection risk (with death and return to dialysis censored) with lymphocyte count as time-dependent variable (344 patients were removed from the analysis because of missing data).

|  | Cox model 1 |           |         | Cox model 2 |           |         |
|--|-------------|-----------|---------|-------------|-----------|---------|
|  | HR          | 95% CI    | P-value | HR          | 95% CI    | P-value |
| Number of lymphocytes (ref>1.500 G/L)          |             |           |         |             |           |         |
| ≤ 0.750  | 2.18        | 1.69-2.83 | <0.001  | 2.06        | 1.59-2.67 | <0.001  |
| ]0.750-1.500[                                  | 1.24        | 1.01-1.52 | 0.041   | 1.21        | 0.98-1.48 | 0.073   |
| Donor age (ref ≤50 years)                      |             |           |         |             |           |         |
| 51-60 years                                    | 1.26        | 1.01-1.58 | 0.038   | 1.14        | 0.91-1.43 | 0.240   |
| > 60 years                                     | 1.41        | 1.14-1.75 | 0.002   | 1.17        | 0.94-1.48 | 0.155   |
| Recipient gender (men vs women)                | 0.81        | 0.68-0.97 | 0.023   | 0.84        | 0.70-1.01 | 0.060   |
| History of neoplasia (yes vs no)               | 1.35        | 1.03-1.77 | 0.028   | 1.33        | 1.02-1.75 | 0.037   |
| HLA-ABDR mismatches >4                         | 1.36        | 1.09-1.70 | 0.007   | 1.38        | 1.11-1.73 | 0.004   |
| Positive Panel-Reactive Antibody anti-class I  | 1.84        | 1.51-2.23 | <0.001  | 1.85        | 1.53-2.24 | <0.001  |
| Rejection in the 1st year post-transplantation | 1.28        | 1.04-1.60 | 0.018   | 1.20        | 0.97-1.47 | 0.456   |
| eGFR* (per 10 ml/min)                          | -           | -         | -       | 0.89        | 0.84-0.93 | <0.001  |
| <b>INITIAL TREATMENT</b>                       |             |           |         |             |           |         |
| Induction therapy (depleting vs non-depleting) | 0.96        | 0.78-1.16 | 0.661   | 0.93        | 0.76-1.13 | 0.456   |
| Maintenance therapy                            |             |           |         |             |           |         |
| Calcineurin inhibitor                          | 0.98        | 0.59-1.63 | 0.953   | 0.94        | 0.57-1.57 | 0.826   |
| mTOR inhibitor                                 | 1.32        | 0.77-2.25 | 0.316   | 1.28        | 0.75-2.20 | 0.365   |
| Antiproliferative drug                         | 1.04        | 0.65-1.67 | 0.867   | 1.06        | 0.67-1.71 | 0.790   |
| Prednisone                                     | 0.95        | 0.73-1.24 | 0.714   | 0.97        | 0.75-1.27 | 0.846   |

\* The eGFR was considered as time-dependent marker for the model 2.

**Table 6.** Cox multivariate analysis of cancer risk (with death and return to dialysis censored) with lymphocyte count as time-dependent variable.

|  | Cox model 1 |           |         | Cox model 2 |           |         |
|--|-------------|-----------|---------|-------------|-----------|---------|
|  | HR          | 95% CI    | P-value | HR          | 95% CI    | P-value |
| Number of lymphocytes (ref>1.500 G/L)          |             |           |         |             |           |         |
| ≤ 0.750  | 0.93        | 0.69-1.26 | 0.648   | 0.92        | 0.68-1.26 | 0.615   |
| ]0.750-1.500[                                  | 1.08        | 0.89-1.31 | 0.442   | 1.08        | 0.88-1.31 | 0.468   |
| Graft rank (>1 versus 1)                       | 1.58        | 1.25-2.01 | 0.001   | 1.59        | 1.25-2.02 | 0.001   |
| Donor age (ref ≤50 years)                      |             |           |         |             |           |         |
| 51-60 years                                    | 1.24        | 0.97-1.58 | 0.083   | 1.21        | 0.95-1.56 | 0.116   |
| > 60 years                                     | 1.56        | 1.22-2.01 | <0.001  | 1.51        | 1.17-1.97 | 0.002   |
| Recipient age (> 55 vs ≤55 years)              | 2.51        | 2.02-3.14 | <0.001  | 2.52        | 2.02-3.13 | <0.001  |
| History of neoplasia (yes vs no)               | 1.69        | 1.32-2.15 | <0.001  | 1.68        | 1.32-2.15 | <0.001  |
| eGFR* (per 10 ml/min)                          | -           | -         | -       | 0.98        | 0.93-1.03 | 0.422   |
| <b>INITIAL TREATMENT</b>                       |             |           |         |             |           |         |
| Induction therapy (depleting vs non-depleting) | 0.96        | 0.77-1.18 | 0.677   | 0.95        | 0.77-1.18 | 0.652   |
| Maintenance therapy                            |             |           |         |             |           |         |
| Calcineurin inhibitor                          | 0.96        | 0.56-1.65 | 0.889   | 0.95        | 0.56-1.63 | 0.861   |
| mTOR inhibitor                                 | 0.85        | 0.47-1.51 | 0.573   | 0.84        | 0.47-1.50 | 0.554   |
| Antiproliferative drug                         | 0.77        | 0.49-1.21 | 0.257   | 0.77        | 0.49-1.22 | 0.266   |
| Prednisone                                     | 0.89        | 0.70-1.14 | 0.368   | 0.89        | 0.70-1.14 | 0.369   |

\* The eGFR was considered as time-dependent marker for the model 2.

**Table 7.** Cox multivariate analyses per center (Nantes: n= 1632, Paris Necker: n=1367).

|                                  | Overall cohort |                  | Nantes      |                  | Necker      |                  |
|----------------------------------|----------------|------------------|-------------|------------------|-------------|------------------|
|                                  | HR             | 95% CI           | HR          | 95% CI           | HR          | 95% CI           |
| <b>Cox MODEL 1 *</b>             |                |                  |             |                  |             |                  |
| Graft failure (ref>1.500 G/L)    |                |                  |             |                  |             |                  |
| ≤ 0.750 (severe lymphopenia)     | <b>3.18</b>    | <b>2.29-4.44</b> | <b>3.57</b> | <b>2.37-5.38</b> | <b>2.61</b> | <b>1.44-4.72</b> |
| ]0.750-1.500] (mild lymphopenia) | 1.30           | 0.99-1.17        | <b>1.58</b> | <b>1.12-2.22</b> | 0.87        | 0.53-1.41        |
| Patient death (ref>1.500 G/L)    |                |                  |             |                  |             |                  |
| ≤ 0.750 (severe lymphopenia)     | <b>1.96</b>    | <b>1.35-2.86</b> | <b>2.37</b> | <b>1.41-3.99</b> | 1.46        | 0.81-2.60        |
| ]0.750-1.500] (mild lymphopenia) | 1.07           | 0.81-1.41        | 0.64        | 0.41-1.02        | 1.49        | 1.02-2.17        |
| Viral infection (ref>1.500 G/L)  |                |                  |             |                  |             |                  |
| ≤ 0.750 (severe lymphopenia)     | <b>2.18</b>    | <b>1.69-2.83</b> | <b>2.41</b> | <b>1.67-3.52</b> | <b>1.97</b> | <b>1.37-2.83</b> |
| ]0.750-1.500] (mild lymphopenia) | 1.24           | 1.14-1.75        | 1.25        | 0.92-1.70        | 1.27        | 0.96-1.67        |
| Cancer (ref>1.500 G/L)           |                |                  |             |                  |             |                  |
| ≤ 0.750 (severe lymphopenia)     | 0.93           | 0.69-1.26        | 0.88        | 0.60-1.30        | 1.08        | 0.65-1.81        |
| ]0.750-1.500] (mild lymphopenia) | 1.08           | 0.89-1.31        | 1.03        | 0.81-1.30        | 1.17        | 0.83-1.64        |
| <b>Cox MODEL 2**</b>             |                |                  |             |                  |             |                  |
| Graft failure (ref>1.500 G/L)    |                |                  |             |                  |             |                  |
| ≤ 0.750 (severe lymphopenia)     | <b>2.21</b>    | <b>1.58-3.09</b> | <b>2.11</b> | <b>1.39-3.19</b> | <b>2.22</b> | <b>1.20-4.13</b> |
| ]0.750-1.500] (mild lymphopenia) | 1.20           | 0.92-1.58        | 1.51        | 1.07-2.12        | 0.71        | 0.43-1.17        |
| Patient death (ref>1.500 G/L)    |                |                  |             |                  |             |                  |
| ≤ 0.750 (severe lymphopenia)     | <b>1.91</b>    | <b>1.31-2.78</b> | <b>2.37</b> | <b>1.41-3.98</b> | 1.40        | 0.79-2.50        |
| ]0.750-1.500] (mild lymphopenia) | 1.06           | 0.90-1.41        | 0.66        | 0.42-1.03        | 1.45        | 0.99-2.12        |
| Viral infection (ref>1.500 G/L)  |                |                  |             |                  |             |                  |
| ≤ 0.750 (severe lymphopenia)     | <b>2.06</b>    | <b>1.59-2.67</b> | <b>2.32</b> | <b>1.60-3.39</b> | <b>1.80</b> | <b>1.29-2.59</b> |
| ]0.750-1.500] (mild lymphopenia) | 1.21           | 0.98-1.48        | 1.24        | 0.91-1.68        | 1.20        | 0.90-1.58        |
| Cancer (ref>1.500 G/L)           |                |                  |             |                  |             |                  |
| ≤ 0.750 (severe lymphopenia)     | 0.92           | 0.68-1.26        | 0.89        | 0.61-1.31        | 1.06        | 0.63-1.77        |
| ]0.750-1.500] (mild lymphopenia) | 1.08           | 0.88-1.31        | 1.03        | 0.81-1.31        | 1.14        | 0.81-1.61        |

\* eGFR was considered at 1-year for the Cox model 1 analysis

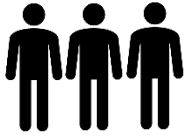
\*\*: eGFR was considered as time-dependent marker for the model 2 analysis

**Table 4.** Cox unadjusted analyses and Cox multivariate analysis of patient death risk (with a functioning graft) with lymphocyte count as time-dependent variable (374 patients were removed from the analysis because of missing data as detailed in Table S5 and S6).

|  | Unadjusted Cox models |           |         | Cox model 1 |           |         | Cox model 2 |           |         |
|--|-----------------------|-----------|---------|-------------|-----------|---------|-------------|-----------|---------|
|  | HR                    | 95% CI    | P-value | HR          | 95% CI    | P-value | HR          | 95% CI    | P-value |
| Number of lymphocytes (ref>1.500 G/L) (normal) |                       |           |         |             |           |         |             |           |         |
| ≤ 0.750 (severe lymphopenia)                   | 2.66                  | 1.92-3.68 | <0.001  | 1.96        | 1.35-2.86 | 0.004   | 1.91        | 1.31-2.78 | 0.001   |
| ]0.750-1.500] (mild lymphopenia)               | 1.39                  | 1.08-1.79 | 0.011   | 1.07        | 0.81-1.41 | 0.378   | 1.06        | 0.80-1.41 | 0.669   |
| <b>TRANSPLANTATION</b>                         |                       |           |         |             |           |         |             |           |         |
| Kidney-pancreas transplantation                | 0.50                  | 0.30-0.85 | 0.010   | -           | -         | -       | -           | -         | -       |
| Graft rank (>1 versus 1)                       | 1.51                  | 1.16-1.97 | 0.002   | 1.62        | 1.11-2.35 | 0.012   | 1.59        | 1.09-2.31 | 0.015   |
| Cold ischemia time (> 12 vs ≤ 12 hours)        | 1.78                  | 1.28-2.47 | <0.001  | -           | -         | -       | -           | -         | -       |
| Number of dialysis post-transplantation > 1    | 1.85                  | 1.47-2.33 | <0.001  | 1.55        | 1.11-2.35 | 0.001   | 1.52        | 1.17-1.98 | 0.002   |
| <b>DONOR</b>                                   |                       |           |         |             |           |         |             |           |         |
| Donor age (ref ≤50 years)                      |                       |           |         |             |           |         |             |           |         |
| 51-60 years                                    | 1.69                  | 1.25-2.29 |         | -           | -         | -       | -           | -         | -       |
| > 60 years                                     | 3.39                  | 2.60-4.43 |         | -           | -         | -       | -           | -         | -       |
| Donor gender (men vs women)                    | 1.06                  | 0.84-1.34 | 0.628   | -           | -         | -       | -           | -         | -       |
| Deceased donor                                 | 2.84                  | 1.76-4.58 | 0.001   | -           | -         | -       | -           | -         | -       |
| Type of donor (ref living donor)               |                       |           |         |             |           |         |             |           |         |
| Heart-beating                                  | 2.84                  | 1.76-4.58 |         | -           | -         | -       | -           | -         | -       |
| Non-heart-beating                              | 2.86                  | 0.84-9.74 |         | -           | -         | -       | -           | -         | -       |
| Positive CMV serology                          | 1.11                  | 0.88-1.39 | 0.384   | -           | -         | -       | -           | -         | -       |
| <b>RECIPIENT</b>                               |                       |           |         |             |           |         |             |           |         |
| Recipient age (> 55 vs ≤55 years)              | 3.89                  | 3.09-4.90 | <0.001  | 2.93        | 2.22-3.86 | <0.001  | 2.90        | 2.21-3.81 | <0.001  |
| Recipient gender (men vs women)                | 1.10                  | 0.87-1.39 | 0.439   | -           | -         | -       | -           | -         | -       |
| Initial nephropathy (ref Glomerulonephritis)   |                       |           |         |             |           |         |             |           |         |
| Diabetic nephropathy                           | 1.52                  | 1.06-2.18 |         | 1.49        | 0.86-2.62 | 0.156   | 1.48        | 0.85-2.60 | 0.161   |
| Vascular nephropathy                           | 2.50                  | 1.63-3.83 |         | 2.63        | 1.62-4.27 | <0.001  | 2.53        | 1.56-4.11 | 0.002   |
| Pyelonephritis                                 | 1.19                  | 0.88-1.61 |         | 1.48        | 1.05-2.08 | 0.027   | 1.47        | 1.03-2.07 | 0.029   |
| Other disease and unknown causes               | 1.23                  | 0.83-1.83 |         | 0.98        | 0.62-1.56 | 0.952   | 0.98        | 0.62-1.57 | 0.961   |
| Dialysis technique (ref pre-emptive)           |                       |           |         |             |           |         |             |           |         |
| Peritoneal                                     | 1.30                  | 0.59-2.85 |         | 1.60        | 0.67-3.83 | 0.287   | 1.62        | 0.67-3.87 | 0.277   |
| Hemodialysis                                   | 2.63                  | 1.67-4.15 |         | 2.15        | 1.25-3.69 | 0.006   | 2.09        | 1.21-3.59 | 0.008   |
| History of diabetes (yes vs no)                | 1.64                  | 1.27-2.12 | <0.001  | 1.81        | 1.18-2.76 | 0.006   | 1.78        | 1.17-2.73 | 0.007   |
| History of neoplasia (yes vs no)               | 2.40                  | 1.77-3.25 | <0.001  | 1.83        | 1.29-2.59 | 0.007   | 1.86        | 1.32-2.64 | 0.004   |
| Positive CMV serology                          | 1.71                  | 1.33-2.19 | <0.001  | 1.54        | 1.15-2.05 | 0.003   | 1.53        | 1.15-2.04 | 0.003   |
| <b>IMMUNOLOGY</b>                              |                       |           |         |             |           |         |             |           |         |
| HLA-ABDR mismatches >4                         | 0.75                  | 0.54-1.05 | 0.096   | -           | -         | -       | -           | -         | -       |
| Positive Panel-Reactive Antibody anti-class I  | 1.49                  | 1.13-1.96 | 0.006   | 1.39        | 1.03-1.88 | 0.032   | 1.37        | 1.02-1.86 | 0.037   |
| Positive Panel-Reactive Antibody anti-class II | 1.18                  | 0.90-1.57 | 0.242   | -           | -         | -       | -           | -         | -       |
| <b>INITIAL TREATMENT</b>                       |                       |           |         |             |           |         |             |           |         |
| Induction therapy (depleting vs non-depleting) | 0.88                  | 0.70-1.12 | 0.293   | 0.62        | 0.46-0.84 | 0.002   | 0.63        | 0.46-0.85 | 0.002   |
| Maintenance therapy                            |                       |           |         |             |           |         |             |           |         |
| Calcineurin inhibitor                          | 1.70                  | 0.87-3.30 | 0.160   | 0.86        | 0.41-1.77 | 0.677   | 0.80        | 0.39-1.66 | 0.552   |
| mTOR inhibitor                                 | 0.76                  | 0.39-1.49 | 0.427   | 0.69        | 0.25-1.88 | 0.464   | 0.63        | 0.23-1.75 | 0.378   |
| Antiproliferative drug                         | 1.35                  | 0.76-2.41 | 0.267   | 1.08        | 0.51-2.29 | 0.844   | 1.09        | 0.51-2.32 | 0.812   |
| Prednisone                                     | 1.00                  | 0.73-1.36 | 0.994   | 1.15        | 0.79-1.66 | 0.457   | 1.17        | 0.81-1.70 | 0.475   |
| <b>1-YEAR PARAMETERS</b>                       |                       |           |         |             |           |         |             |           |         |
| eGFR* (per 10 ml/min)                          | 0.80                  | 0.74-0.86 | <0.001  | 0.91        | 0.83-0.98 | 0.011   | 0.86        | 0.80-0.92 | <0.001  |
| 1-year daily proteinuria (g.L <sup>-1</sup> )  | 1.14                  | 0.97-1.33 | 0.107   | -           | -         | -       | -           | -         | -       |
| Rejection in the 1st year post-transplantation | 1.03                  | 0.77-1.38 | 0.833   | -           | -         | -       | -           | -         | -       |

\* The eGFR was considered at 1-year for the unadjusted analyses and the model 1 and as time-dependent marker for the model 2.

# Time-dependent lymphocyte count after transplantation is associated with higher risk of graft failure and death.



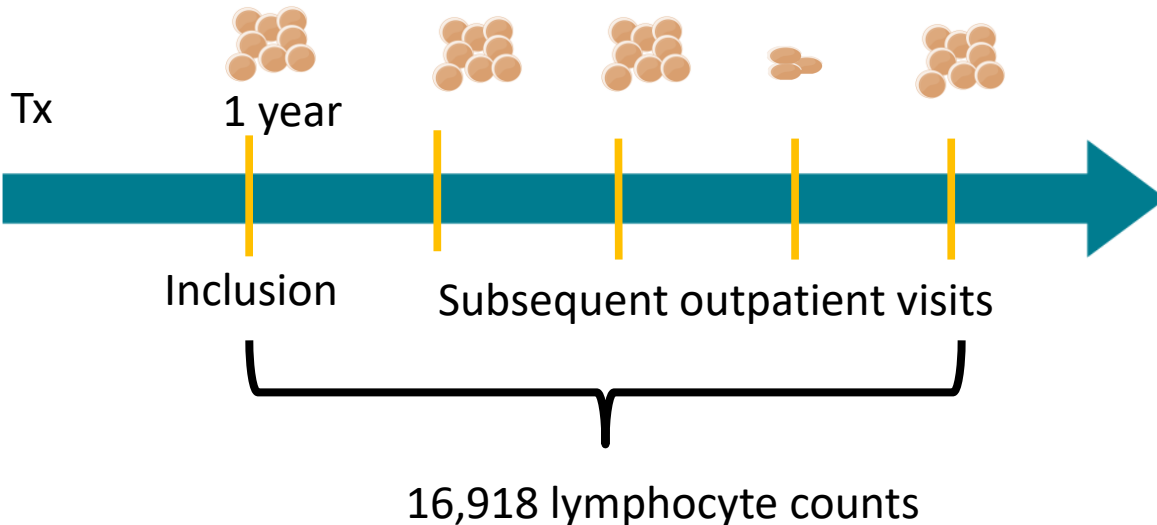
2,999 kidney transplant recipients



Normal Lymphocyte count [ $1,500-4,000/\text{mm}^3$ ]



Deep lymphopenia [ $< 750/\text{mm}^3$ ]



Deep lymphopenia at a given time of the follow-up increases the risk of

Graft failure

*HR 3.18*

*IC 2.29-4.44*

Mortality

*HR 1.96*

*IC 1.35-2.86*

Viral infections

*HR 2.18*

*IC 1.69-2.83*

## CONCLUSION:

After the first year of transplantation, the occurrence of a deep lymphopenia at a given time of the patient's follow-up is a risk factor of long term graft failure, death and viral infection