



**HAL**  
open science

## Phase 1b/2 trial of tepotinib in sorafenibpretreated advanced hepatocellular carcinoma with MET overexpression

Thomas Decaens, Carlo Barone, Eric Assenat, Martin Wermke, Angelica Fasolo, Philippe Merle, Jean-Frédéric Blanc, Véronique Grando, Angelo Iacobellis, Erica Villa, et al.

► **To cite this version:**

Thomas Decaens, Carlo Barone, Eric Assenat, Martin Wermke, Angelica Fasolo, et al.. Phase 1b/2 trial of tepotinib in sorafenibpretreated advanced hepatocellular carcinoma with MET overexpression. British Journal of Cancer, 2021, 10.1038/s41416-021-01334-9 . hal-03244360

**HAL Id: hal-03244360**

**<https://u-paris.hal.science/hal-03244360>**

Submitted on 1 Jun 2021

**HAL** is a multi-disciplinary open access archive for the deposit and dissemination of scientific research documents, whether they are published or not. The documents may come from teaching and research institutions in France or abroad, or from public or private research centers.

L'archive ouverte pluridisciplinaire **HAL**, est destinée au dépôt et à la diffusion de documents scientifiques de niveau recherche, publiés ou non, émanant des établissements d'enseignement et de recherche français ou étrangers, des laboratoires publics ou privés.



Distributed under a Creative Commons Attribution 4.0 International License



**ARTICLE**

**Clinical Study**

# Phase 1b/2 trial of tepotinib in sorafenibpretreated advanced hepatocellular carcinoma with MET overexpression

Thomas Decaens<sup>1</sup>, Carlo Barone<sup>2</sup>, Eric Assenat<sup>3</sup>, Martin Wermke<sup>4</sup>, Angelica Fasolo<sup>5</sup>, Philippe Merle<sup>6</sup>, Jean-Frédéric Blanc<sup>7</sup>, Véronique Grando<sup>8</sup>, Angelo Iacobellis<sup>9</sup>, Erica Villa<sup>10</sup>, Joerg Trojan<sup>11</sup>, Josef Straub<sup>12</sup>, Rolf Bruns<sup>13</sup>, Karin Berghoff<sup>14</sup>, Juergen Scheele<sup>15</sup>, Eric Raymond<sup>16</sup> and Sandrine Faivre<sup>17</sup>

**BACKGROUND:** This Phase 1b/2 study evaluated tepotinib, a highly selective MET inhibitor, in US/European patients with sorafenibpretreated advanced hepatocellular carcinoma (aHCC) with MET overexpression.

**METHODS:** Eligible adults had aHCC, progression after  $\geq 4$  weeks of sorafenib, and, for Phase 2 only, MET overexpression. Tepotinib was administered once daily at 300 or 500 mg in Phase 1b ('3 + 3' design), and at the recommended Phase 2 dose (RP2D) in Phase 2. Primary endpoints were dose-limiting toxicities (DLTs; Phase 1b) and 12-week investigator-assessed progression-free survival (PFS; Phase 2).

**RESULTS:** In Phase 1b ( $n = 17$ ), no DLTs occurred and the RP2D was confirmed as 500 mg. In Phase 2 ( $n = 49$ ), the primary endpoint was met: 12-week PFS was 63.3% (90% CI: 50.5–74.7), which was significantly greater than the predefined null hypothesis of  $\leq 15\%$  (one-sided binomial exact test:  $P < 0.0001$ ). Median time to progression was 4 months. In Phase 2, 28.6% of patients had treatment-related Grade  $\geq 3$  adverse events, including peripheral oedema and lipase increase (both 6.1%).

**CONCLUSIONS:** Tepotinib was generally well tolerated and the RP2D (500 mg) showed promising efficacy and, therefore, a positive benefit–risk balance in sorafenibpretreated aHCC with MET overexpression.

**TRIAL REGISTRATION:** ClinicalTrials.gov: NCT02115373.

*British Journal of Cancer* <https://doi.org/10.1038/s41416-021-01334-9>

**BACKGROUND**

Liver cancer is the third leading cause of cancer-related death worldwide, with more than 780,000 deaths due to the disease each year.<sup>1</sup> The incidence of hepatocellular carcinoma (HCC), which accounts for 90% of primary liver cancers,<sup>2</sup> is still rising, in part driven by high rates of chronic viral hepatitis and increasing obesity-related liver disease.<sup>3</sup> HCC detection remains late, and only ~30–40% of US/European patients have curative treatment options at the time of diagnosis.<sup>4</sup> Many have poor clinical conditions and an unfavourable prognosis due to underlying liver dysfunction and/or advanced disease stage, i.e. Barcelona Clinic Liver Cancer stage C.<sup>4,5</sup> There is an urgent unmet need for new therapies and combinations that can improve patient outcomes in this setting.

Until recently, sorafenib was the only approved systemic targeted therapy for advanced HCC (aHCC).<sup>6</sup> As first-line therapy, sorafenib provides a modest but significant improvement in

overall survival (OS), but its activity is almost universally hampered by the development of drug resistance.<sup>7,8</sup> The options for aHCC treatment have since expanded: lenvatinib and atezolizumab + bevacizumab are approved for first-line treatment and regorafenib, ramucirumab (in patients with alpha-fetoprotein [AFP] elevation) and cabozantinib are approved for use post-sorafenib in both the US and Europe.<sup>9–13</sup> In the US, approvals have also been granted for pembrolizumab and nivolumab  $\pm$  ipilimumab in the second-line setting.<sup>14–17</sup> Despite the availability of novel therapies, the overall prognosis for aHCC is poor.<sup>18</sup> Furthermore, dependent on the results of ongoing trials and drug approvals, greater use of immunotherapies for upfront therapy may lead to an increased need for effective treatment options for subsequent lines.<sup>6</sup>

MET, the tyrosine kinase receptor for hepatocyte growth factor (HGF), is often dysregulated in HCC, which can promote rapid tumour growth and aggressive invasiveness.<sup>18</sup> Approximately 50%

<sup>1</sup>University Grenoble Alpes, Department of Hepato-Gastroenterology and Digestive Oncology, CHU Grenoble Alpes, Institute for Advanced Biosciences INSERM U1209, Grenoble, France; <sup>2</sup>Medical Oncology, Policlinico Universitario A. Gemelli, Roma, Italy; <sup>3</sup>Medical Oncology, CHU Saint Eloi, Montpellier, France; <sup>4</sup>NCT/UCC Early Clinical Trial Unit, University Hospital Carl-Gustav-Carus, Dresden, Germany; <sup>5</sup>Oncology, IRCCS San Raffaele, Milan, Italy; <sup>6</sup>Service d'Hépatogastro-Entérologie, Hôpital de la Croix Rousse, Lyon, France; <sup>7</sup>Service d'Hépatogastro-Entérologie et d'Oncologie Digestive, Groupe Hospitalier Haut-Lévêque, CHU Bordeaux, Pessac, France; <sup>8</sup>Service Hépatologie, Hôpital Jean-Verdier, Bondy, France; <sup>9</sup>Reperto di Gastroenterologia ed Endoscopia Digestiva, Ospedale Casa Sollievo della Sofferenza IRCCS, San Giovanni Rotondo, Italy; <sup>10</sup>Division of Gastroenterology Policlinico di Modena, Modena, Italy; <sup>11</sup>Gastrointestinal Oncology, Goethe University Hospital, Frankfurt, Germany; <sup>12</sup>Clinical Biomarker & Companion Diagnostics, Merck KGaA, Darmstadt, Germany; <sup>13</sup>BioStatistics, Merck KGaA, Darmstadt, Germany; <sup>14</sup>Global Patient Safety Innovation, Merck KGaA, Darmstadt, Germany; <sup>15</sup>Global Clinical Development Oncology, Merck KGaA, Darmstadt, Germany; <sup>16</sup>Medical Oncology, Paris-St Joseph Hospital, Paris, France and <sup>17</sup>Medical Oncology, Saint-Louis Hospital & Paris 7 University, Paris, France

Correspondence: Thomas Decaens (tdecaens@chu-grenoble.fr)

Received: 2 October 2020 Revised: 5 February 2021 Accepted: 23 February 2021

Published online: 06 April 2021

of HCCs are reported to harbour *MET* alterations, including gene mutation in 4%, gene amplification in 24% and overexpression of mRNA and protein in 50% and 28%, respectively.<sup>18</sup> Moreover, *MET* expression has been reported to increase following treatment with sorafenib,<sup>19</sup> suggesting that *MET* overexpression may contribute to sorafenib resistance. Aberrant *MET* activation has been implicated in resistance to vascular endothelial growth factor receptor (VEGFR) inhibitors in a number of solid tumours.<sup>20–22</sup> Following sorafenib treatment, *MET* overexpression is associated with a poor prognosis, with significantly shorter median OS compared with aHCC without *MET* overexpression.<sup>23</sup> *MET* is, therefore, a therapeutic target in HCC after failure of sorafenib,<sup>18</sup> and probably also after other treatments that target the VEGF pathway.

Tepotinib is an orally available, potent and highly selective *MET* inhibitor that has shown pronounced anti-tumour activity in *MET*-dependent preclinical models in vivo, in patients with a range of solid tumours (including HCC), and in patients with advanced non-small cell lung cancer (NSCLC) with *MET* exon 14 skipping.<sup>24–26</sup> In combination with gefitinib, tepotinib improved efficacy compared with chemotherapy in patients with advanced, epidermal growth factor receptor (EGFR)-mutant NSCLC with *MET* overexpression or *MET* amplification and acquired resistance to EGFR inhibitor therapy in a randomised Phase 1b/2 trial<sup>27</sup> and a Phase 2 study of tepotinib plus osimertinib in patients with acquired resistance to first-line osimertinib due to *MET* amplification in an ongoing trial (INSIGHT 2; NCT03940703). Tepotinib in combination with cetuximab is also being investigated in patients with *RAS/BRAF* wild-type left-sided metastatic colorectal cancer and acquired resistance to anti-EGFR antibody-targeted therapy due to *MET* amplification in a Phase 2 study (NCT04515394).

In HCC, tepotinib has demonstrated preclinical activity in patient-derived primary liver cancer explants, in which sensitivity to the drug was associated with *MET* overexpression.<sup>26</sup> These data, together with the rationale for targeting *MET* in HCC, led to the design of two Phase 1b/2 trials of tepotinib in patients with aHCC with *MET* overexpression. The trials incorporated Phase 1b parts to establish the recommended Phase 2 dose (RP2D) of tepotinib in patients with aHCC and Child–Pugh Class A liver function, who were excluded from the first-in-human Phase 1 trial.<sup>24</sup> One of the Phase 1b/2 trials in aHCC with *MET* overexpression was conducted in Asian patients without prior systemic anti-cancer therapy and demonstrated a significant increase in time to progression (TTP) with tepotinib versus sorafenib.<sup>28</sup> Here, we report the second aHCC Phase 1b/2 study, which investigated tepotinib in Western patients with *MET* overexpression who had previously failed treatment with sorafenib (NCT02115373).

## METHODS

### Study design and objectives

This was an open-label, multicentre, integrated, Phase 1b/2 trial conducted across Europe and the US in patients with aHCC who had failed sorafenib treatment. Phase 1b was an open-label, single-arm, dose-escalation study with a classic ‘3 + 3’ design, and the primary objective was to confirm the RP2D of tepotinib. Phase 2 was an open-label, single-arm, non-randomised study to evaluate the activity of tepotinib in patients with *MET* overexpression (Supplementary Fig. 1).

All patients provided written informed consent for participation in the study. The study was done in accordance with the Declaration of Helsinki, International Council for Harmonisation guidelines for Good Clinical Practice, local laws and applicable regulatory requirements. The study was approved by the institutional review board or independent ethics committee of each centre.

### Patients

In both study phases, eligible patients were  $\geq 18$  years old with aHCC, Child–Pugh Class A liver function score, Eastern Cooperative Oncology Group performance status 0 or 1, and measurable disease defined by Response Evaluation Criteria In Solid Tumours (RECIST) v1.1. Patients were also required to have  $\geq 4$  weeks of prior sorafenib treatment, which was discontinued  $\geq 2$  weeks before tepotinib initiation due to either intolerance or disease progression. Exclusion criteria included any prior systemic anti-cancer treatment for aHCC (besides sorafenib) and presence of symptomatic or untreated brain metastases. Full inclusion and exclusion criteria are shown in Supplementary Table 1.

In Phase 2, patients were required to have *MET* overexpression, based on assessment of a tumour biopsy sample collected after sorafenib discontinuation and within 28 days before the first day of study treatment. *MET* overexpression was defined as moderate (2+) or strong (3+) staining for *MET* in  $\geq 50\%$  of tumour cells by immunohistochemistry (IHC) using the pharmDx anti-total *MET* (D1C2) rabbit monoclonal antibody (Dako, Agilent Technologies, Inc., Santa Clara, CA) (Supplementary Table 2). *MET* status was not required for Phase 1b, but was determined retrospectively in a biopsy sample collected within 28 days before the first day of study treatment. *MET* amplification status was determined for patients in Phase 1b and 2 using formalin-fixed paraffin-embedded tumour material by fluorescent in situ hybridisation. *MET* amplification was defined as *MET*:*CEP7* ratio  $\geq 2$  or mean gene copy number  $\geq 5$ .

### Treatment administration

In Phase 1b, patients received oral tepotinib hydrochloride hydrate in continuous 21-day cycles at one of two daily dose levels: 300 and 500 mg (containing 270 and 450 mg, respectively, of the active moiety in free base form), each given once daily (QD). Additional patients were enrolled at the RP2D. All patients were treated QD with the RP2D of tepotinib in the Phase 2 part of the study. Tepotinib was administered until disease progression, intolerable toxicity, death or withdrawal from treatment.

### Study endpoints and assessments

The primary endpoint in Phase 1b was incidence of dose-limiting toxicities (DLTs) during Cycle 1. Details of DLTs are defined in Supplementary Table 3. Pharmacokinetics (PK) endpoints, including  $C_{max}$  and area under the concentration–time curve over the dosing interval at steady state ( $AUC_{\tau,ss}$ ), were evaluated at Cycle 1, Day 15 as a secondary endpoint in Phase 1b. Selected efficacy measures were evaluated as secondary endpoints in Phase 1b.

In Phase 2, the primary endpoint was progression-free survival (PFS) status after 12 weeks of treatment, as assessed by the investigator per RECIST v1.1. Secondary endpoints included TTP, time to symptomatic progression, objective response rate (ORR), disease control rate (DCR) (all investigator-assessed and per RECIST v1.1), PFS per modified RECIST v1.1 (investigator-assessed), OS and biological response (defined as a decrease in AFP  $>20\%$ ). As sensitivity analyses, PFS and TTP were also evaluated by independent review. Safety was assessed via reporting of adverse events (AEs), graded according to National Cancer Institute Common Terminology and Criteria for Adverse Events v4.0.

In both phases, tumour assessments were performed per RECIST v1.1 and modified RECIST<sup>29</sup> v1.1 on Day 1 of every second cycle from Cycle 3 to 13, and Day 1 of every fourth cycle thereafter. Exploratory endpoints included biomarkers of *MET* pathway activity (including *MET* amplification status).

### Statistical analysis

Continuous variables, including PK data, were summarised using descriptive statistics; qualitative variables were summarised by means of counts and percentages. In both phases, efficacy endpoints and AEs were analysed in the intention-to-treat/safety

analysis set (SAS), which includes all patients who were administered  $\geq 1$  dose of tepotinib.

In Phase 1b, DLTs were assessed during Cycle 1 in all patients who received  $\geq 80\%$  of the planned cumulative dose of tepotinib and patients who stopped treatment due to a DLT. Patients who were replaced during Cycle 1 were excluded from the analysis set.

For the Phase 2 primary endpoint, the null hypothesis that the 12-week progression-free rate is  $\leq 15\%$  (based on historical data)<sup>23</sup> was tested against a one-sided alternative hypothesis that the 12-week progression-free rate is 30%, using a binomial exact test with an  $\alpha$  value of 0.05. A sample size of 48 patients was required to achieve a power of at least 80%.

Tumour response (best overall response, ORR, DCR) and biological response were summarised, along with corresponding two-sided exact Clopper–Pearson 90% confidence intervals (CIs). Kaplan–Meier estimates of median PFS, TTP, time to symptomatic progression and OS are presented, along with 90% CIs (calculated using the two-sided exact Clopper–Pearson method). All statistical analyses were performed using SAS<sup>®</sup> Software version 9.4 (Statistical Analysis System, SAS-Institute, Cary, North Carolina, US).

## RESULTS

### Patients and treatment

Patients were enrolled between May 2014 and February 2017. In Phase 1b, 24 patients were screened and 17 received treatment: four patients in the 300 mg cohort and 13 patients in the 500 mg cohort (Supplementary Fig. 2a). In Phase 2, 155 patients were screened and 49 were treated with tepotinib 500 mg, forming the intention-to-treat/SAS (Supplementary Fig. 2b). Baseline characteristics of patients in Phase 1b and 2 were representative of the target population with aHCC (Table 1). The median duration of treatment with tepotinib was 2.7 months (range, 0–23 months) in Phase 1b and 3.02 months (range, 0.03–16.49 months) in Phase 2.

### Safety

In Phase 1b, no DLTs occurred in either dose cohort, and the RP2D was, therefore, confirmed as 500 mg QD. Of 17 patients, 16 (94.1%) experienced an AE of any cause in Phase 1b, of which ten (58.8%) experienced Grade  $\geq 3$  events of any cause.

In Phase 2, 48 of 49 patients (98.0%) experienced an AE of any cause; 28 (57.1%) experienced Grade  $\geq 3$  AEs of any cause. The most common AEs of any cause in Phase 2 were peripheral oedema (65.3%), ascites (34.7%) and diarrhoea (32.7%). Peripheral oedema was also the most common AE of any cause in Phase 1b (76.5%).

Three of 17 patients (17.6%) in Phase 1b and 17 of 49 (34.7%) in Phase 2 permanently discontinued treatment due to AEs of any cause. These AEs were considered to be treatment-related for one patient (5.9%) in Phase 1b (peripheral oedema) and eight patients (16.3%) in Phase 2 (peripheral oedema [ $n = 5$ ], ascites [ $n = 1$ ], aspartate aminotransferase increased [ $n = 1$ ], blood creatinine increased [ $n = 1$ ] and hypoglycaemic coma [ $n = 1$ ]). Four patients (23.5%) in Phase 1b and eight (16.3%) in Phase 2 experienced AEs, of any cause, that led to death. In one instance, this was deemed by the investigator to be related to study treatment (hypoglycaemic coma, patient in Phase 2). This patient had type 1 diabetes with a history of multiple insulin medications to manage the condition.

In Phase 2, AEs related to study treatment were reported in 41 of 49 patients (83.7%); these were Grade  $\geq 3$  in 14 patients (28.6%) (Table 2). The most common treatment-related AEs were peripheral oedema (38.8%), asthenia (22.4%), fatigue (18.4%), diarrhoea (16.3%) and nausea (14.3%). The most common Grade  $\geq 3$  treatment-related AEs were peripheral oedema (6.1%) and increased lipase (6.1%). The incidence of treatment-related AEs was similar in Phase 1b, with 82.4% of patients experiencing at

least one event, and 23.5% experiencing at least one Grade  $\geq 3$  event.

### Efficacy

In Phase 1b, best overall response was partial response (PR) in two of 17 patients (11.8%), both treated with 300 mg tepotinib (Table 3). Objective responses were seen in two of four patients (50%) in the 300 mg cohort and no patients (of 13; 0%) in the 500 mg cohort. Disease control was seen in two of four patients (50%) in the 300 mg cohort and four of 13 (30.8%) in the 500 mg cohort; six of 17 (35.3%) overall. Objective responses were seen in no patients ( $n = 1$ ; 0%) with MET IHC 0, one patient ( $n = 5$ ; 20%) with MET IHC 1+, one patient ( $n = 7$ ; 14.3%) with MET IHC 2+ and no patients ( $n = 2$ ; 0.0%) with MET IHC 3+. The DCR was 100.0% for patients with MET IHC 0, 40.0% for MET IHC 1+, 42.9% for MET IHC 2+ and 0% for MET IHC 3+.

At the time of the analysis, 12 of 17 patients (70.6%) had experienced disease progression and 14 of 17 patients (82.4%) had died. Median TTP was 2.1 months (90% CI: 1.4–7.2), median PFS was 1.5 months (90% CI: 1.4–3.7) and median OS was 7.2 months (90% CI: 3.7–10.1).

The primary endpoint of the Phase 2 part of the study was met: 31 of 49 patients (63.3%; 90% CI: 50.5–74.7) were progression-free (as assessed by the investigator) at 12 weeks, which was significantly greater than the 12-week progression-free rate prespecified in the null hypothesis of  $\leq 15\%$  ( $P < 0.0001$ ). PFS at Week 12 was consistent across all subgroups, although there was a trend for better PFS at 12 weeks in patients with MET IHC 3+ (versus 2+), *MET* amplification (versus no *MET* amplification), AFP elevation at baseline  $\geq 200$   $\mu\text{g/L}$  (versus  $< 200$ ) and hepatitis B virus/hepatitis C virus (HBV/HCV) positivity (versus HBV/HCV-negative; Fig. 1). Median investigator-assessed PFS was 3.4 months (90% CI: 2.8–4.2; Fig. 2a), and 3.2 months (90% CI: 2–4.6) by independent review committee. Kaplan–Meier curves suggested a trend of improved PFS in patients with HBV/HCV-positive status and possibly in those with *MET* amplification, whereas the PFS curves appeared to be similar irrespective of MET IHC status (Supplementary Fig. 3a, c, e).

Of 49 patients assessed for response, one patient (2.0%) achieved complete response (CR), and three patients (6.1%) achieved PR, giving an investigator-assessed ORR of 4/49 (8.2%; 90% CI: 2.8–17.7). Additionally, 24 patients (49%) had stable disease (SD), resulting in a DCR of 28/49 (57.1%; 90% CI: 44.4–69.2; Fig. 3; Table 3). Of six patients who tested positive for *MET* amplification, one patient (16.7%) achieved CR, four achieved SD (66.7%) and one was not evaluable (16.7%; Fig. 3). Among the eight patients with MET IHC 3+ status, one patient (12.5%) had a CR and four had SD (50%), for a DCR of 62.5%.

Median investigator-assessed TTP was 4.0 months (90% CI: 2.9–4.2; Fig. 2b). As assessed by independent review committee, median TTP was 4.2 months (90% CI: 2.6–5.5). At the time of analysis, 40 patients (81.6%) had died; median OS was 5.6 months (90% CI: 5.1–8.2; Fig. 2c). There was a trend toward improved OS in patients who were HBV- or HCV-positive (versus negative), whereas no clear OS difference was observed with respect to *MET* amplification or MET IHC status (Supplementary Fig. 3b, d, f). Of the 45 patients with baseline and post-baseline AFP assessments, 14 (31.1%) were considered as having a biological response (a decrease in AFP concentration of  $> 20\%$ ).

### Pharmacokinetics

In the Phase 1b part of the study,  $\text{AUC}_{\tau,ss}$  was 15,200  $\text{ng}\cdot\text{h/mL}$  (18.2%) and  $C_{\text{max}}$  was 734  $\text{ng/mL}$  (19.6%) for the 300 mg dose group (values represent the geometric mean and geometric coefficient of variation). Corresponding values for the 500 mg dose group were 12,900  $\text{ng}\cdot\text{h/mL}$  (50.4%) for  $\text{AUC}_{\tau,ss}$  and 677  $\text{ng/mL}$  (44.6%) for  $C_{\text{max}}$ .

**Table 1.** Patient demographics and baseline characteristics (Phase 1b and 2).

	Phase 1b			Phase 2
	300 mg/day (n = 4)	500 mg/day (n = 13)	Total (N = 17)	500 mg/day (N = 49)
Age, years, median (range)	65.5 (58–73)	69.0 (51–79)	69.0 (51–79)	66.0 (19–82)
<65 years, n (%)	1 (25.0)	3 (23.1)	4 (23.5)	21 (42.9)
≥65 years, n (%)	3 (75.0)	10 (76.9)	13 (76.4)	28 (57.1)
Sex, n (%)				
Male	2 (50.0)	11 (84.6)	13 (76.5)	41 (83.7)
Female	2 (50.0)	2 (15.4)	4 (23.5)	8 (16.3)
Race, n (%)				
White	1 (25.0)	8 (61.5)	9 (52.9)	26 (53.1)
Black	0 (0.0)	0 (0.0)	0 (0.0)	1 (2.0)
Asian	0 (0.0)	0 (0.0)	0 (0.0)	2 (4.1)
Other	0 (0.0)	1 (7.7)	1 (5.9)	0 (0.0)
Missing	3 (75.0)	4 (30.8)	7 (41.2)	20 (40.8)
ECOG PS at baseline, n (%)				
0	3 (75.0)	10 (76.9)	13 (76.5)	25 (51.0)
1	1 (25.0)	3 (23.1)	4 (23.5)	24 (49.0)
Cause of HCC (investigator-assessed), n (%)				
HBV				4 (8.2)
HCV				13 (26.5)
Alcohol-induced cirrhosis				11 (22.4)
Non-alcoholic steatohepatitis				2 (4.1)
Steatosis				2 (4.1)
Other <sup>a</sup>				16 (32.7)
Missing				1 (2.0)
Vascular invasion, n (%)				
Yes	1 (25.0)	5 (38.5)	6 (35.3)	12 (24.5)
No	0 (0.0)	5 (38.5)	5 (29.4)	24 (49.0)
Missing	3 (75.0)	3 (23.1)	6 (35.3)	13 (26.5)
MET IHC, n (%) <sup>b</sup>				
IHC 0	0 (0.0)	1 (7.7)	1 (5.9)	
IHC 1+	1 (25.0)	4 (30.8)	5 (29.4)	
IHC 2+	3 (75.0)	4 (30.8)	7 (41.2)	41 (83.7)
IHC 3+	0 (0.0)	2 (15.4)	2 (11.8)	8 (16.3)
Missing	0 (0.0)	2 (15.4)	2 (11.8)	0 (0.0)
MET amplification, n (%) <sup>c</sup>				
Present	0 (0.0)	0 (0.0)	0 (0.0)	6 (12.2)
Absent	4 (100.0)	10 (76.9)	14 (82.4)	43 (87.8)
Missing	0 (0.0)	3 (23.1)	3 (17.6)	0 (0.0)
AFP elevation, n (%)				
<200 µg/L	1 (25.0)	9 (69.2)	10 (58.8)	20 (40.8)
≥200 µg/L	3 (75.0)	3 (23.1)	6 (35.3)	27 (55.1)
Missing	0 (0.0)	1 (7.7)	1 (5.9)	2 (4.1)

Please note, as numbers have been rounded to one decimal place, some columns may not total 100%.

AFP alpha-fetoprotein, ECOG PS Eastern Cooperative Oncology Group performance status, HBV hepatitis B virus, HCC hepatocellular carcinoma, HCV Hepatitis C virus, IHC immunohistochemistry.

<sup>a</sup>Other investigator-assessed root causes of HCC were: metabolic cirrhosis (n = 1), adenomatous hyperplasia (n = 1), hemochromatosis (n = 1), regenerative nodular hyperplasia (n = 1), previous drug abuse (n = 1); cirrhosis (n = 1); both alcohol-induced cirrhosis and HCV (n = 1) and idiopathic/unknown/none/not assessable (n = 9).

<sup>b</sup>In Phase 1b, patients were not required to have MET overexpression.

<sup>c</sup>MET amplification is defined as MET:CEP7 ratio ≥2 or mean gene copy number ≥5.

## DISCUSSION

The Phase 1b part of the study confirmed the RP2D of tepotinib as 500 mg QD for the treatment of patients with aHCC who had previously received sorafenib. This dosing level is consistent with studies of tepotinib in other tumour types, and in Asian patients

with HCC with MET overexpression.<sup>24,28,30</sup> Preliminary anti-tumour activity was observed in Phase 1b with tepotinib: two patients achieved PR and four patients achieved SD. Following results from Phase 1b, Phase 2 investigated the efficacy and safety of tepotinib dosed at 500 mg QD in patients with HCC tumours with MET overexpression who had previously been treated with sorafenib. The Phase 2 primary endpoint was met: 63.3% of patients remained alive and progression-free according to investigator-assessment at 12 weeks, which was significantly greater than the ≤15% rate prespecified in null hypothesis (based on historical data).<sup>23</sup> Median PFS was 3.4 months, median TTP was 4.0 months (both investigator-assessed) and median OS was 5.6 months.

Tepotinib was generally well tolerated, with no new safety signals identified. No DLTs were reported in Phase 1b, and treatment-related AEs were reported in 82.4% of patients overall, and at Grade ≥3 in 23.5%. The safety profile observed in Phase 2 was consistent with Phase 1b and with other studies of tepotinib.<sup>24,25,28,30</sup> Treatment-related AEs were reported in 83.7% of patients overall and at Grade ≥3 in 28.6%. The most common Grade ≥3 treatment-related AEs were peripheral oedema and increased lipase, which are both known safety signals with tepotinib.<sup>24</sup> The safety profile is encouraging, especially given that some patients received treatment for >15 months, and makes tepotinib particularly suited for investigation in combination with other classes of agent such as immunotherapies.

Although no clear differences in efficacy of tepotinib according to MET status were evident, 12-week PFS rates were numerically higher in patients with MET IHC 3+ staining (versus 2+) or MET amplification (versus no amplification). The DCR also appeared more favourable among patients with MET amplification relative to the overall population. Prior reports have suggested that MET overexpression/amplification status may predict response to MET inhibition.<sup>18,31,32</sup> For example, in a Phase 2 study of the MET inhibitor capmatinib in aHCC, objective response was observed in 3/30 patients (10%) with a less stringent definition of MET

**Table 2.** Phase 2: Treatment-emergent adverse events of any grade and Grade ≥3.

Event	Tepotinib	
	Any grade	Grade ≥3
≥1 adverse event of any cause, <sup>a</sup> n (%)	48 (98.0)	28 (57.1)
≥1 treatment-related adverse event, n (%)	41 (83.7)	14 (28.6)
Treatment-related adverse event in ≥5% of patients, n (%)		
Peripheral oedema	19 (38.8)	3 (6.1)
Asthenia	11 (22.4)	0
Fatigue	9 (18.4)	0
Diarrhoea	8 (16.3)	0
Nausea	7 (14.3)	0
Ascites	6 (12.2)	2 (4.1)
Hypoalbuminaemia	5 (10.2)	0
Decreased appetite	4 (8.2)	0
Vomiting	4 (8.2)	0
Blood creatinine increased	3 (6.1)	1 (2.0)
Lipase increased	3 (6.1)	3 (6.1)
Pruritus	3 (6.1)	0

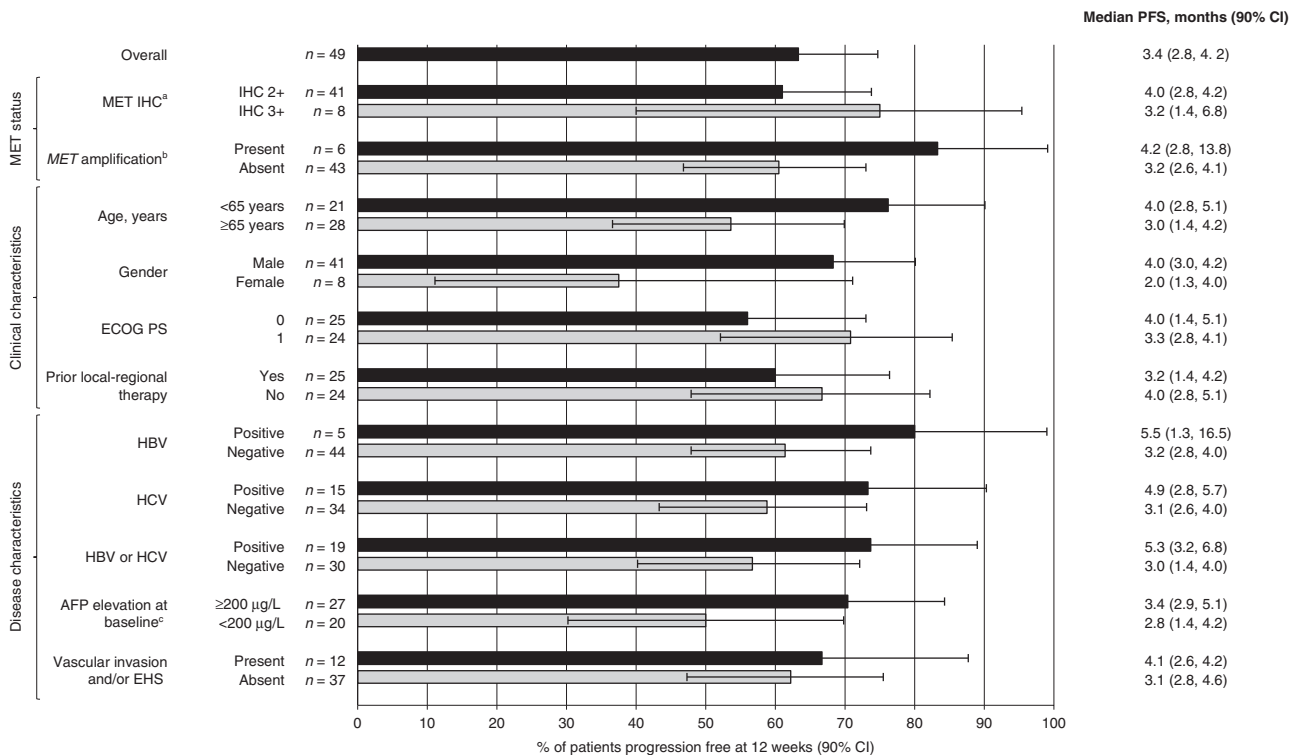
<sup>a</sup>Treatment-related adverse events are defined as events that occur within the day of first dose of trial treatment, up until 33 days after last dose of treatment.

**Table 3.** Best overall response (investigator-assessed).

	Phase 1b			Phase 2
	300 mg/day (n = 4)	500 mg/day (n = 13)	Total (N = 17)	500 mg/day (N = 49)
Best overall response; investigator RECIST v1.1				
CR, n (%)	0	0	0	1 <sup>a</sup> (2.0)
PR, n (%)	2 (50.0)	0	2 (11.8)	3 (6.1)
SD, n (%)	0	4 (30.8)	4 (23.5)	24 (49.0)
PD, n (%)	1 (25.0)	8 (61.5)	9 (52.9)	15 (30.6)
Not evaluable, n (%)	1 (25.0)	1 (7.7)	2 (11.8)	6 (12.2)
ORR, n (%) [90% CI]	2 (50.0) [9.8, 90.2]	0 (0.0) [0.0, 26.0]	2 (11.8) [2.1, 32.6]	4 (8.2) [2.8, 17.7]
DCR, n (%) [90% CI]	2 (50.0) [9.8, 90.2]	4 (30.8) [11.3, 57.3]	6 (35.3) [16.6, 58.0]	28 (57.1) [44.4, 69.2]
Best overall response; investigator mRECIST v1.1				
CR, n (%)				1 <sup>a</sup> (2.0)
PR, n (%)				4 (8.2)
SD, n (%)				19 (38.8)
Non-CR/Non-PD, n (%)				7 (14.3)
PD, n (%)				13 (26.5)
Not evaluable, n (%)				5 (10.2)
ORR, n (%) [90% CI]				5 (10.2) [4.1, 20.3]
DCR, n (%) [90% CI]				24 (49.0) [36.5, 61.5]

CI confidence interval, CR complete response, DCR disease control rate, mRECIST modified Response Evaluation Criteria in Solid Tumors, ORR objective response rate, PD progressive disease, PR partial response, RECIST Response Evaluation Criteria in Solid Tumors, SD stable disease.

<sup>a</sup>CR in a patient with MET amplification.



**Fig. 1 Percentage of patients progression free at 12 weeks according to investigator assessment in Phase 2.** Data are shown for the overall population and patient subgroups.<sup>a</sup>Moderate (2+) or strong (3+) staining intensity for MET on IHC in the majority (≥50%) of tumour cells; <sup>b</sup>*MET* amplification defined as *MET*:*CEP7* ratio ≥2 or mean gene copy number ≥5; <sup>c</sup>*AFP* was missing for two patients (12-week PFS in these patients was 100%). *AFP* alpha-fetoprotein; *CI* confidence interval, *EHS* extrahepatic spread, *ECOG PS* Eastern Cooperative Oncology Group performance status, *HBV* hepatitis B virus, *HCV* hepatitis C virus, *IHC* immunohistochemistry, *PFS* progression-free survival.

alteration (*MET* H-score ≥50%, *MET*:*CEP7* ratio ≥2 or *MET* gene copy number ≥5; *n* = 30), and 3/10 patients (30%) when a more strict definition of *MET* alteration was applied (*MET* IHC 3+, or 2+ with *MET* gene copy number ≥5; *n* = 10).<sup>31</sup>

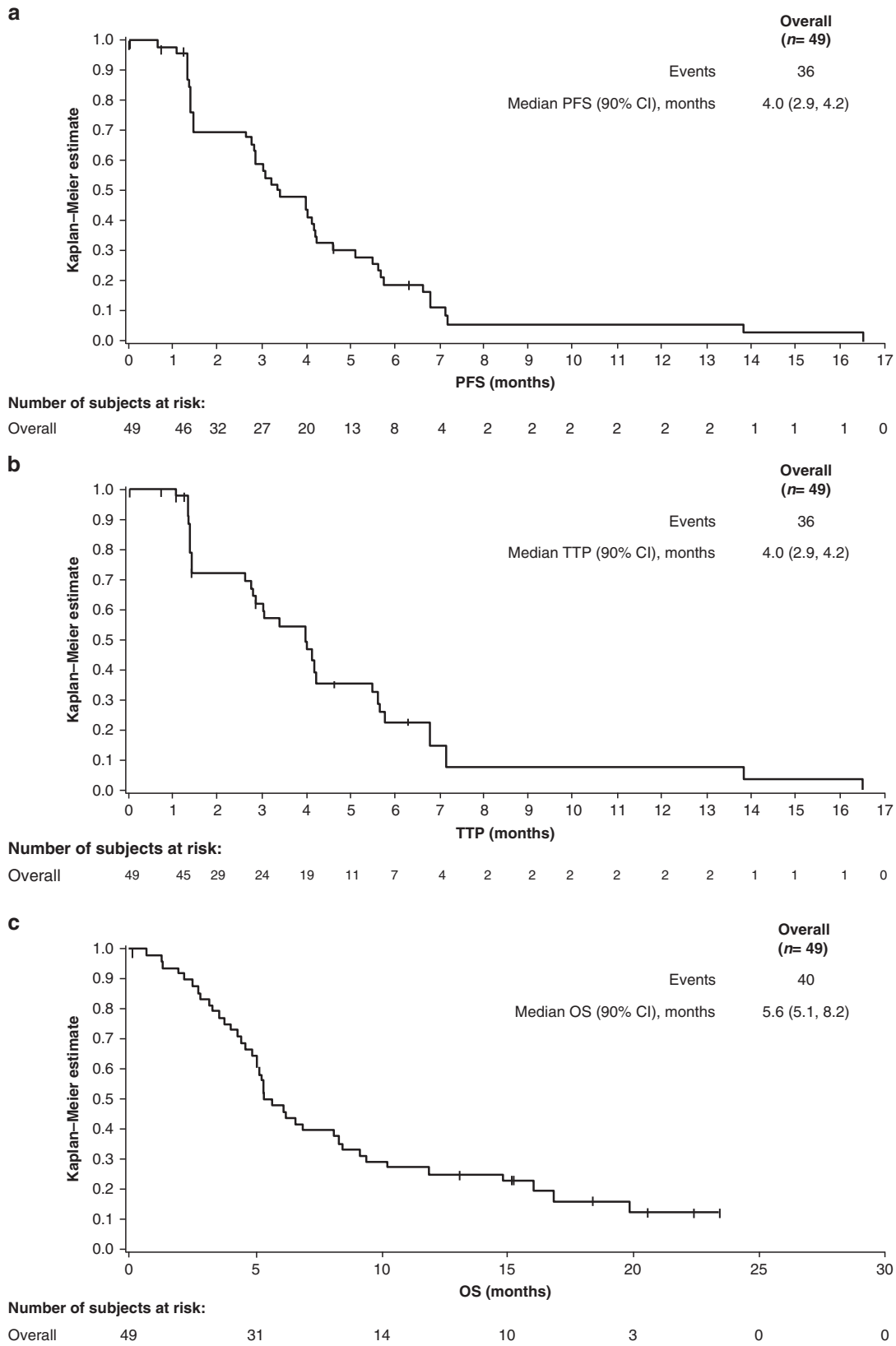
We also observed a trend for improved PFS and OS in patients who were HBV/HCV-positive versus negative. This may reflect a positive prognostic effect, as both HBV- and HCV-associated HCC have been independently associated with longer survival compared with HCC of other aetiologies in recent analyses.<sup>33,34</sup> Interestingly, we also noted a trend for greater 12-week PFS in patients with AFP elevation at baseline ≥200 µg/L (versus <200 µg/L). In addition to its role as a poor prognostic factor,<sup>35</sup> increased AFP levels are an established positive predictive marker for ramucirumab, which has been approved for second-line use specifically in patients with AFP elevation following results from the Phase 3 REACH-2 trial.<sup>11</sup> Higher AFP levels were also associated with a more pronounced benefit of the multikinase inhibitor cabozantinib versus placebo in the randomised Phase 3 CELESTIAL trial.<sup>36</sup>

Exposure in this HCC population, as derived from the rich PK sampling in the Phase 1b part, was lower than in the first-in-human trial in patients with advanced solid tumours (47% of the *AUC*<sub>TSS</sub> and 52% of the *C*<sub>max</sub>).<sup>24</sup> A similar reduction in exposure was observed in the first-line Phase 1b/2 tepotinib trial in HCC.<sup>37</sup> This is in line with findings from a population PK analysis showing that liver cirrhosis is associated with lower exposure to tepotinib and a dedicated PK hepatic impairment trial demonstrating a reduction in exposure (of 12% for *AUC* from time 0 to infinity and 29% for *C*<sub>max</sub>) in patients with moderate (Child–Pugh B) hepatic impairment relative to control patients.<sup>38</sup>

In sorafenibpretreated aHCC, *MET* overexpression is a poor prognostic factor that has been associated with significantly shorter median OS (3.8 months) compared with tumours without

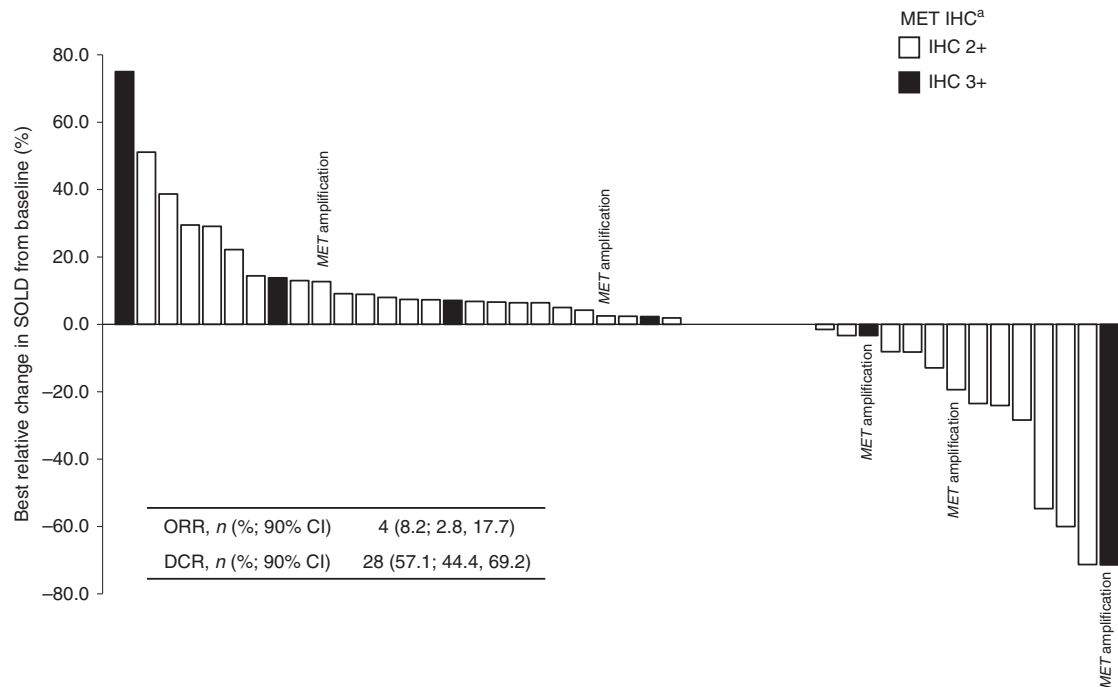
*MET* overexpression (9.0 months).<sup>23</sup> Despite enrolment of this poor prognostic group, median PFS in the present study appears to be similar to that reported in second-line Phase 3 trials in *MET*-unselected tumours of regorafenib,<sup>10</sup> ramucirumab<sup>39</sup> and pembrolizumab,<sup>15</sup> although it is shorter than reported with cabozantinib.<sup>12</sup> The negative prognostic effect of *MET* overexpression is likely to explain the lower median OS with tepotinib relative to even the placebo arms of those trials. Although longer OS has been reported in sorafenibpretreated aHCC with *MET* overexpression in two tivantinib Phase 3 trials,<sup>40,41</sup> those results may not be directly comparable with our trial for two reasons. First, *MET* was assessed in archival specimens in a substantial proportion of patients in the tivantinib trials and so might not have indicated *MET* status at the time of enrolment. Second, turnaround time for central IHC assessment in the tivantinib trials (median of 43 days for *MET*V-HCC)<sup>40</sup> could have led to exclusion of patients with more aggressive disease due to rapid progression or declining performance status while awaiting central *MET* status determination. In contrast, eligibility for the tepotinib Phase 2 trial required demonstration of *MET* overexpression in a biopsy acquired within 28 days of the first study dose, thereby minimising the potential for evolution in *MET* status or loss of patients with aggressive disease during assessment for eligibility.

In addition to these new second-line options, the first-line HCC treatment landscape has evolved with the approval of the multikinase inhibitor lenvatinib and the immunotherapy atezolizumab (in combination with bevacizumab) for the initial treatment of unresectable HCC following positive results from the Phase 3 trials.<sup>9,13,42</sup> Although immunotherapy trials in HCC have not been universally positive,<sup>15,43</sup> immunotherapy-based combinations are a promising avenue of investigation, with several ongoing trials investigating regimens consisting of an immune checkpoint blocker with a tyrosine kinase inhibitor.<sup>44</sup> Of



**Fig. 2** Kaplan–Meier curves for PFS, TTP and OS in Phase 2. **a** Investigator-assessed PFS, **b** investigator-assessed TTP, **c** OS. *CI* confidence interval, *OS* overall survival, *PFS* progression-free survival, *TTP* time to progression.





**Fig. 3 Best relative change in target lesions in Phase 2.** Shading indicates MET IHC status: 2+ (white) or 3+ (black). Patients with *MET* amplification are labelled. Inset table shows overall response and disease control rates. \*Moderate (2+) or strong (3+) staining intensity for MET on IHC in the majority ( $\geq 50\%$ ) of tumour cells; *MET* amplification defined as *MET:CEP7* ratio  $\geq 2$  or mean gene copy number  $\geq 5$ . CI confidence interval, DCR disease control rate, IHC immunohistochemistry, ORR objective response rate, SOLD sum of longest diameter.

note, the immunosuppressive function of the HGF/MET pathway provides a preclinical rationale for combining MET inhibitors with programmed death-1/programmed death-ligand 1 inhibitors.<sup>45</sup> A Phase 3 trial of first-line cabozantinib plus atezolizumab in aHCC is currently underway.<sup>46</sup>

How novel first-line therapies may impact the activity of second-line tepotinib demonstrated in the present study is unknown. Other limitations include the single-arm, non-randomised design and the relatively small number of enrolled patients with MET IHC 3+ staining or *MET* amplification, which preclude definitive conclusions regarding the potential predictive relevance of MET-based biomarkers in this study, especially in Phase 1b. Finally, efficacy outcomes cannot be compared directly between the two phases of the study due to differences in MET status (unselected in Phase 1b vs IHC 2+/3+ in Phase 2), baseline characteristics (higher proportion of patients aged <65 years in Phase 2), tepotinib dose and sample size.

In both phases of the study, tepotinib was generally well tolerated by Western patients with aHCC who had previously received sorafenib treatment. At the RP2D (500 mg QD), tepotinib showed promising efficacy and, therefore, a positive benefit–risk balance for patients with aHCC with MET overexpression who had previously received sorafenib therapy.

#### ACKNOWLEDGEMENTS

We would like to thank patients, investigators, co-investigators and the study teams at all participating centres and at Merck KGaA, Darmstadt, Germany.

#### AUTHOR CONTRIBUTIONS

All authors participated fully in developing and reviewing the manuscript for publication with final approval for submission. T.D. was involved in formal analysis, investigation, validation and visualisation. C.B. was involved in investigation, supervision and validation. E.A. was involved in investigation, resources, validation and visualisation. M.W. was involved in investigation. A.F. was involved in conceptualisation, data curation, investigation and validation. P.M. was involved in investigation, formal analysis and validation. J.-F.B. was involved in investigation,

formal analysis, validation and visualisation. V.G. was involved in investigation and validation. A.I. was involved in resources, supervision, validation and visualisation. E.V. was involved in investigation and formal analysis. J.T. was involved in data curation, formal analysis, investigation, supervision, validation and visualisation. R.B. was involved in conceptualisation, data curation, formal analysis, validation and visualisation. J.S. was involved in conceptualisation, data curation, formal analysis, validation and visualisation. K.B. was involved in formal analysis, supervision and validation. J.Sc. was involved in conceptualisation, data curation, formal analysis, investigation and supervision (medical lead). E.R. was involved in conceptualisation, data curation, formal analysis, supervision, validation and visualisation. S.F. was involved in conceptualisation, data curation, formal analysis, investigation, project administration, resources, supervision, validation and visualisation.

#### ADDITIONAL INFORMATION

**Ethics approval and consent to participate** All patients provided written informed consent for participation in the study. The study was conducted in accordance with the Declaration of Helsinki. This study has been reviewed and approved by the respective Institutional Review Boards/Independent Ethics Committees according to national and international regulations (Supplementary Table 4).

**Data availability** Data are held by the sponsor, Merck KGaA (Darmstadt, Germany), to whom any request for additional data should be addressed.

**Competing interests** T.D. provided consulting for Bristol-Myers Squibb, AstraZeneca, Ipsen, Bayer, Eisai and Becton Dickinson; received research grants from Genoscience and ArQule, and travel grants from Merck. C.B. attended speaker's bureau for Servier; received research grants from Merck-Serono and travel grants from Daiichi-Sankyo. P. M. has participated in advisory boards for Bayer, Eisai, Exelixis, Ipsen, Lilly, Onxeo, Roche, AstraZeneca, Bristol-Myers Squibb and Merck Sharp & Dohme. J.-F.B. has provided consulting for Bayer, Ipsen, Eisai, Bristol-Myers Squibb, Roche and AstraZeneca. J.T. has participated in advisory boards and speakers' bureau for Merck-Serono, Roche, Lilly, Eisai and Ipsen, and received travel grants from Roche. E.R. has provided consulting for Genoscience and SCOR, and holds stocks with both companies. S.F. has participated in advisory boards for Bayer, Eisai, Ipsen, Merck-Serono and Roche, and attended speakers' bureau for Bayer, Eisai and Ipsen. E.A., M. W., A.F., V.G., A.I. and E.V. have nothing to disclose. J.S., R.B. and K.B. are employees of Merck KGaA, Darmstadt, Germany, and hold stock with the company. J.Sc. is an employee of Merck KGaA, Darmstadt, Germany.

**Funding information** The sponsor, Merck KGaA, Darmstadt, Germany, provided the study drug and worked with investigators on the trial design and plan, collection and analyses of data and interpretation of results. Datasets were reviewed by the authors, and all authors participated fully in developing and reviewing the manuscript for publication. Funding for a professional medical writer with access to the data was provided by the sponsor for initial drafts of the manuscript. Medical writing assistance was provided by David Lester (Bioscript Science, Macclesfield, UK), Jack Eaton (Syneos Health, London, UK) and Mark Dyson, DPhil (Berlin, Germany), and funded by Merck KGaA, Darmstadt, Germany. All authors had full access to all the data in the study and had final responsibility for the decision to submit for publication.

**Supplementary information** The online version contains supplementary material available at <https://doi.org/10.1038/s41416-021-01334-9>.

**Publisher's note** Springer Nature remains neutral with regard to jurisdictional claims in published maps and institutional affiliations.

## REFERENCES

- Bray, F., Ferlay, J., Soerjomataram, I., Siegel, R. L., Torre, L. A. & Jemal, A. Global cancer statistics 2018: GLOBOCAN estimates of incidence and mortality worldwide for 36 cancers in 185 countries. *CA Cancer J. Clin.* **68**, 394–424 (2018).
- Llovet, J. M., Zucman-Rossi, J., Pikarsky, E., Sangro, B., Schwartz, M., Sherman, M. et al. Hepatocellular carcinoma. *Nat. Rev. Dis. Prim.* **2**, 16018 (2016).
- Yang, J. D., Hainaut, P., Gores, G. J., Amadou, A., Plymth, A. & Roberts, L. R. A global view of hepatocellular carcinoma: trends, risk, prevention and management. *Nat. Rev. Gastroenterol. Hepatol.* **16**, 589–604 (2019).
- Park, J. W., Chen, M., Colombo, M., Roberts, L. R., Schwartz, M., Chen, P. J. et al. Global patterns of hepatocellular carcinoma management from diagnosis to death: the BRIDGE Study. *Liver Int.* **35**, 2155–2166 (2015).
- European Association for the Study of the Liver. EASL Clinical Practice Guidelines: Management of hepatocellular carcinoma. *J. Hepatol.* **69**, 182–236 (2018).
- Bruix, J., da Fonseca, L. G. & Reig, M. Insights into the success and failure of systemic therapy for hepatocellular carcinoma. *Nat. Rev. Gastroenterol. Hepatol.* **16**, 617–630 (2019).
- Llovet, J. M., Ricci, S., Mazzaferro, V., Hilgard, P., Gane, E., Blanc, J. F. et al. Sorafenib in advanced hepatocellular carcinoma. *N. Engl. J. Med.* **359**, 378–390 (2008).
- Cheng, A.-L., Kang, Y.-K., Chen, Z., Tsao, C.-J., Qin, S., Kim, J. S. et al. Efficacy and safety of sorafenib in patients in the Asia-Pacific region with advanced hepatocellular carcinoma: a phase 3 randomised, double-blind, placebo-controlled trial. *Lancet Oncol.* **10**, 25–34 (2009).
- Kudo, M., Finn, R. S., Qin, S., Han, K. H., Ikeda, K., Piscaglia, F. et al. Lenvatinib versus sorafenib in first-line treatment of patients with unresectable hepatocellular carcinoma: a randomised phase 3 non-inferiority trial. *Lancet* **391**, 1163–1173 (2018).
- Bruix, J., Qin, S., Merle, P., Granito, A., Huang, Y. H., Bodoky, G. et al. Regorafenib for patients with hepatocellular carcinoma who progressed on sorafenib treatment (RESORCE): a randomised, double-blind, placebo-controlled, phase 3 trial. *Lancet* **389**, 56–66 (2017).
- Kelley, R. K., Cheng, A.-L., Braith, F. S., Park, J.-W., Benzaghoul, F., Milwee, S. et al. Phase 3 (COSMIC-312) study of cabozantinib (C) in combination with atezolizumab (A) versus sorafenib (S) in patients (pts) with advanced hepatocellular carcinoma (aHCC) who have not received previous systemic anticancer therapy. *J. Clin. Oncol.* **37**, TPS4157 (2019).
- Abou-Alfa, G. K., Meyer, T., Cheng, A.-L., El-Khoueiry, A. B., Rimassa, L., Ryoo, B.-Y. et al. Cabozantinib in patients with advanced and progressing hepatocellular carcinoma. *N. Engl. J. Med.* **379**, 54–63 (2018).
- Finn, R. S., Qin, S., Ikeda, M., Galle, P. R., Ducreux, M., Kim, T. Y. et al. Atezolizumab plus bevacizumab in unresectable hepatocellular carcinoma. *N. Engl. J. Med.* **382**, 1894–1905 (2020).
- Zhu, A. X., Finn, R. S., Edeline, J., Cattan, S., Ogasawara, S., Palmer, D. et al. Pembrolizumab in patients with advanced hepatocellular carcinoma previously treated with sorafenib (KEYNOTE-224): a non-randomised, open-label phase 2 trial. *Lancet Oncol.* **19**, 940–952 (2018).
- Finn, R. S., Ryoo, B.-Y., Merle, P., Kudo, M., Bouattour, M., Lim, H. Y. et al. Pembrolizumab as second-line therapy in patients with advanced hepatocellular carcinoma in KEYNOTE-240: a randomized, double-blind, phase 3 trial. *J. Clin. Oncol.* **38**, 193–202 (2020).
- El-Khoueiry, A. B., Sangro, B., Yau, T., Crocenzi, T. S., Kudo, M., Hsu, C. et al. Nivolumab in patients with advanced hepatocellular carcinoma (CheckMate 040): an open-label, non-comparative, phase 1/2 dose escalation and expansion trial. *Lancet* **389**, 2492–2502 (2017).
- Yau, T., Kang, Y.-K., Kim, T.-Y., El-Khoueiry, A. B., Santoro, A., Sangro, B. et al. Efficacy and safety of nivolumab plus ipilimumab in patients with advanced hepatocellular carcinoma previously treated with sorafenib: the CheckMate 040 randomized clinical trial. *JAMA Oncol.* **6**, e204564 (2020).
- Bouattour, M., Raymond, E., Qin, S., Cheng, A.-L., Stammerberger, U., Locatelli, G. et al. Recent developments of c-Met as a therapeutic target in hepatocellular carcinoma. *Hepatology* **67**, 1132–1149 (2018).
- Rimassa, L., Abbadessa, G., Personeni, N., Porta, C., Borbath, I., Daniele, B. et al. Tumor and circulating biomarkers in patients with second-line hepatocellular carcinoma from the randomized phase 2 study with tivantinib. *Oncotarget* **7**, 72622–72633 (2016).
- Cascone, T., Xu, L., Lin, H. Y., Liu, W., Tran, H. T., Liu, Y. et al. The HGF/c-MET pathway is a driver and biomarker of VEGFR-inhibitor resistance and vascular remodeling in non-small cell lung cancer. *Clin. Cancer Res.* **23**, 5489–5501 (2017).
- Daudigeos-Dubus, E., Le Dret, L., Bawa, O., Opolon, P., Vievard, A., Villa, I. et al. Dual inhibition using cabozantinib overcomes HGF/MET signaling mediated resistance to pan-VEGFR inhibition in orthotopic and metastatic neuroblastoma tumors. *Int. J. Oncol.* **50**, 203–211 (2017).
- Zhou, L., Liu, X. D., Sun, M., Zhang, X., German, P., Bai, S. et al. Targeting MET and AXL overcomes resistance to sunitinib therapy in renal cell carcinoma. *Oncogene* **35**, 2687–2697 (2016).
- Santoro, A., Rimassa, L., Borbath, I., Daniele, B., Salvagni, S., Van Laethem, J. L. et al. Tivantinib for second-line treatment of advanced hepatocellular carcinoma: a randomised, placebo-controlled phase 2 study. *Lancet Oncol.* **14**, 55–63 (2013).
- Falchook, G. S., Kurzrock, R., Amin, H. M., Xiong, W., Fu, S., Piha-Paul, S. A. et al. First-in-man phase 1 trial of the selective MET inhibitor tepotinib in patients with advanced solid tumors. *Clin. Cancer Res.* **26**, 1237–1246 (2020).
- Paik, P. K., Felip, E., Veillon, R., Sakai, H., Cortot, A. B., Garassino, M. C. et al. Tepotinib in non-small-cell lung cancer with MET exon 14 skipping mutations. *N. Engl. J. Med.* **383**, 931–943 (2020).
- Bladt, F., Friese-Hamim, M., Ihling, C., Wilm, C. & Blaukat, A. The c-Met inhibitor MSC2156119J effectively inhibits tumor growth in liver cancer models. *Cancers (Basel)* **6**, 1736–1752 (2014).
- Wu, Y. L., Cheng, Y., Zhou, J., Lu, S., Zhang, Y., Zhao, J. et al. Tepotinib plus gefitinib in patients with EGFR-mutant non-small-cell lung cancer with MET overexpression or MET amplification and acquired resistance to previous EGFR inhibitor (INSIGHT study): an open-label, phase 1b/2, multicentre, randomised trial. *Lancet Res. Med.* **8**, 1132–1143 (2020).
- Ryoo, B. Y., Ren, Z., Kim, T. Y., Pan, H., Rau, K. M., Choi, H. J. et al. Phase 2 trial of tepotinib vs sorafenib in Asian patients (pts) with advanced hepatocellular carcinoma (HCC). *Ann. Oncol.* **29**, viii207 (2018).
- Lencioni, R. & Llovet, J. M. Modified RECIST (mRECIST) assessment for hepatocellular carcinoma. *Semin. Liver Dis.* **30**, 52–60 (2010).
- Shitara, K., Yamazaki, K., Tsushima, T., Naito, T., Matsubara, N., Watanabe, M. et al. Phase 1 trial of the MET inhibitor tepotinib in Japanese patients with solid tumors. *Jpn. J. Clin. Oncol.* **50**, 859–866 (2020).
- Qin, S., Chan, S. L., Sukeepaisarnjaroen, W., Han, G., Choo, S. P., Sriuranpong, V. et al. A phase 2 study of the efficacy and safety of the MET inhibitor capmatinib (INC280) in patients with advanced hepatocellular carcinoma. *Ther. Adv. Med. Oncol.* **11**, 1758835919889001 (2019).
- Moosavi, F., Giovannetti, E., Saso, L. & Firuzi, O. HGF/MET pathway aberrations as diagnostic, prognostic, and predictive biomarkers in human cancers. *Crit. Rev. Clin. Lab. Sci.* **56**, 533–566 (2019).
- Noda, Y., Kawaguchi, T., Kuromatsu, R., Komukai, S., Nakano, M., Niizeki, T. et al. Prognostic profile of patients with non-viral hepatocellular carcinoma: A comparative study with hepatitis C virus-related hepatocellular carcinoma using data mining analysis. *Oncol. Lett.* **18**, 227–236 (2019).
- Brar, G., McNeel, T., McGlynn, K., Graubard, B., Floudas, C., Pia Morelli, M. et al. Hepatocellular carcinoma (HCC) survival by etiology: A SEER-Medicare database analysis. *J. Clin. Oncol.* **37**, 201 (2019).
- Bai, D.-S., Zhang, C., Chen, P., Jin, S.-J. & Jiang, G.-Q. The prognostic correlation of AFP level at diagnosis with pathological grade, progression, and survival of patients with hepatocellular carcinoma. *Sci. Rep.* **7**, 12870 (2017).
- Kelley, R. K., Meyer, T., Rimassa, L., Merle, P., Park, J.-W., Yau, T. et al. Serum alpha-fetoprotein levels and clinical outcomes in the Phase 3 CELESTIAL study of cabozantinib versus placebo in patients with advanced hepatocellular carcinoma. *Clin. Cancer Res.* **26**, 4795–4804 (2020).
- Ryoo, B.-Y., Cheng, A.-L., Ren, Z., Kim, T.-Y., Pan, H., Rau, K.-M. et al. Randomised Phase 1b/2 trial of tepotinib vs sorafenib in Asian patients with advanced hepatocellular carcinoma with MET overexpression. *Br J Cancer.* <https://doi.org/10.1038/s41416-021-01380-3> (2021).
- TEPMETKO® (tepotinib) Japanese Package Insert. March 2020 revision.
- Zhu, A. X., Park, J. O., Ryoo, B. Y., Yen, C. J., Poon, R., Pastorelli, D. et al. Ramucirumab versus placebo as second-line treatment in patients with advanced hepatocellular carcinoma following first-line therapy with sorafenib (REACH): a

- randomised, double-blind, multicentre, phase 3 trial. *Lancet Oncol.* **16**, 859–870 (2015).
40. Rimassa, L., Assenat, E., Peck-Radosavljevic, M., Pracht, M., Zagonel, V., Mathurin, P. et al. Tivantinib for second-line treatment of MET-high, advanced hepatocellular carcinoma (METIV-HCC): a final analysis of a phase 3, randomised, placebo-controlled study. *Lancet Oncol.* **19**, 682–693 (2018).
41. Kudo, M., Morimoto, M., Moriguchi, M., Izumi, N., Takayama, T., Yoshiji, H. et al. A randomized, double-blind, placebo-controlled, phase 3 study of tivantinib in Japanese patients with MET-high hepatocellular carcinoma. *Cancer Sci.* **111**, 3759–3769 (2020).
42. TECENTRIQ® (atezolizumab) US Prescribing Information. November 2020 revision.
43. Yau, T., Park, J., Finn, R., Cheng, A. L., Mathurin, P., Edeline, J. et al. CheckMate 459: a randomized, multi-center phase 3 study of nivolumab (NIVO) vs sorafenib (SOR) as first-line (1L) treatment in patients (pts) with advanced hepatocellular carcinoma (aHCC). *Ann. Oncol.* **30**, v874–v875 (2019).
44. Cheng, H., Sun, G., Chen, H., Li, Y., Han, Z., Zhang, P. et al. Trends in the treatment of advanced hepatocellular carcinoma: immune checkpoint blockade immunotherapy and related combination therapies. *Am. J. Cancer Res.* **9**, 1536–1545 (2019).
45. Papaccio, F., Della Corte, C. M., Viscardi, G., Di Liello, R., Esposito, G., Sparano, F. et al. HGF/MET and the immune system: relevance for cancer immunotherapy. *Int. J. Mol. Sci.* **19**, 3595 (2018).
46. Kelley, R. K., J. W. O., Hazra, S., Benzaghrou, F., Yau, T., Cheng, A. L. et al. Cabozantinib in combination with atezolizumab versus sorafenib in treatment-naive advanced hepatocellular carcinoma: COSMIC-312 Phase 3 study design. *Future Oncol.* **16**, 1525–1536 (2020).



**Open Access** This article is licensed under a Creative Commons Attribution 4.0 International License, which permits use, sharing, adaptation, distribution and reproduction in any medium or format, as long as you give appropriate credit to the original author(s) and the source, provide a link to the Creative Commons license, and indicate if changes were made. The images or other third party material in this article are included in the article's Creative Commons license, unless indicated otherwise in a credit line to the material. If material is not included in the article's Creative Commons license and your intended use is not permitted by statutory regulation or exceeds the permitted use, you will need to obtain permission directly from the copyright holder. To view a copy of this license, visit <http://creativecommons.org/licenses/by/4.0/>.

© The Author(s) 2021