



HAL
open science

A novel lncRNA TCLlnc1 promotes peripheral T cell lymphoma progression through acting as a modular scaffold of HNRNPD and YBX1 complexes

Ping Zhao, Meng-Meng Ji, Ying Fang, Xiao Li, Hong-Mei Yi, Zi-Xun Yan, Shu Cheng, Peng-Peng Xu, Anne Janin, Chao-Fu Wang, et al.

► To cite this version:

Ping Zhao, Meng-Meng Ji, Ying Fang, Xiao Li, Hong-Mei Yi, et al.. A novel lncRNA TCLlnc1 promotes peripheral T cell lymphoma progression through acting as a modular scaffold of HNRNPD and YBX1 complexes. *Cell Death and Disease*, 2021, 12 (4), 10.1038/s41419-021-03594-y . hal-03258381

HAL Id: hal-03258381

<https://u-paris.hal.science/hal-03258381>

Submitted on 11 Jun 2021

HAL is a multi-disciplinary open access archive for the deposit and dissemination of scientific research documents, whether they are published or not. The documents may come from teaching and research institutions in France or abroad, or from public or private research centers.

L'archive ouverte pluridisciplinaire **HAL**, est destinée au dépôt et à la diffusion de documents scientifiques de niveau recherche, publiés ou non, émanant des établissements d'enseignement et de recherche français ou étrangers, des laboratoires publics ou privés.



Distributed under a Creative Commons Attribution 4.0 International License

ARTICLE

Open Access

A novel lncRNA TCLInc1 promotes peripheral T cell lymphoma progression through acting as a modular scaffold of HNRNPD and YBX1 complexes

Ping Zhao^{1,2}, Meng-Meng Ji¹, Ying Fang¹, Xiao Li¹, Hong-Mei Yi², Zi-Xun Yan¹, Shu Cheng¹, Peng-Peng Xu¹, Anne Janin^{3,4}, Chao-Fu Wang^{1,2}, Li Wang^{1,3} and Wei-Li Zhao^{1,3}

Abstract

Long noncoding RNAs (lncRNAs) play an essential role in tumor progression. Few researches focused on the clinical and biological relevance of lncRNAs in peripheral T cell lymphoma (PTCL). In this research, a novel lncRNA (ENST00000503502) was identified overexpressed in the main subtypes of PTCL, and designated as T cell lymphoma-associated lncRNA1 (TCLInc1). Serum TCLInc1 was associated with extranodal involvement, high-risk International Prognostic Index, and poor prognosis of the patients. Both in vitro and in vivo, overexpression of TCLInc1 promoted T-lymphoma cell proliferation and migration, both of which were counteracted by the knockdown of TCLInc1 using small interfering RNAs. As the mechanism of action, TCLInc1 directly interacted with transcription activator heterogeneous nuclear ribonucleoprotein D (HNRNPD) and Y-box binding protein-1 (YBX1) by acting as a modular scaffold. TCLInc1/HNRNPD/YBX1 complex upregulated transcription of *TGFB2* and *TGFB1* genes, activated the tumor growth factor- β signaling pathway, resulting in lymphoma progression, and might be a potential target in PTCL.

Introduction


Peripheral T cell lymphomas (PTCL) encompass a heterogeneous group of neoplasm derived from T cell lineages and represent ~10–15% of non-Hodgkin lymphoma¹, mainly including anaplastic large-cell lymphoma (ALCL)-anaplastic lymphoma kinase (ALK)-positive (ALK⁺ALCL), ALCL-ALK-negative (ALK⁻ALCL), angioimmunoblastic T cell lymphoma (AITL), and PRCL-not otherwise specified (PTCL-NOS)². PTCLs are characterized by advanced disease stage at diagnosis³, and

dismal prognosis, with a 5-year patients survival rate of <30% (except for ALK⁺ALCL)^{4–6}. Therefore, prognostic biomarkers closely related to lymphoma progression and expressed generally in the main histological subtypes need to be further investigated in PTCL.

To date, studies have focused on the alterations in protein-coding genes that serve as diagnostic and therapeutic targets of PTCL⁷. Growing evidence suggests that noncoding RNAs are also critically involved in tumor progression^{8,9}. Long noncoding RNAs (lncRNAs) belong to a class of noncoding sequences >200 nucleotides in length¹⁰ and are emerging as essential factors in the tumorigenesis and metastasis of various cancers, including hematological malignancies^{11,12}. The expression of HOTAIR enhances B-lymphoma cell growth through mitogen-activated protein kinase (MAPK) and extracellular signal-regulated kinase signaling pathway¹³. lncRNA metastasis-associated lung adenocarcinoma transcript 1 is also overexpressed in hematological

Correspondence: Chao-Fu Wang (wangchaofu@126.com) or Li Wang (wl_wangdong@126.com) or Wei-Li Zhao (zhao.weili@yahoo.com)
¹Shanghai Institute of Hematology, State Key Laboratory of Medical Genomics, National Research Center for Translational Medicine at Shanghai, Ruijin Hospital Affiliated to Shanghai Jiao Tong University School of Medicine, Shanghai, China
²Department of Pathology, Ruijin Hospital Affiliated to Shanghai Jiao Tong University School of Medicine, Shanghai, China
Full list of author information is available at the end of the article
These authors contributed equally: Ping Zhao, Meng-Meng Ji
Edited by G. Calin

© The Author(s) 2021

 **Open Access** This article is licensed under a Creative Commons Attribution 4.0 International License, which permits use, sharing, adaptation, distribution and reproduction in any medium or format, as long as you give appropriate credit to the original author(s) and the source, provide a link to the Creative Commons license, and indicate if changes were made. The images or other third party material in this article are included in the article's Creative Commons license, unless indicated otherwise in a credit line to the material. If material is not included in the article's Creative Commons license and your intended use is not permitted by statutory regulation or exceeds the permitted use, you will need to obtain permission directly from the copyright holder. To view a copy of this license, visit <http://creativecommons.org/licenses/by/4.0/>.

malignancies¹⁴, rendering tumor cell resistant to chemotherapeutic agents¹⁵. As a mechanism of action, lncRNAs exhibit diverse aspects regarding tumor progression through regulating chromatin organization and gene transcription in the nucleus. lncRNAs also modulate messenger RNA (mRNA) stability, translation, and post-translational modification in the cytoplasm^{16,17}. However, pathogenic role and underlying molecular mechanism of lncRNAs remain largely unknown in PTCL.

In the present study, we performed genome-wide lncRNA expression assay in PTCL and identified a novel lncRNA (ENST00000503502) associated with lymphoma progression and poor prognosis in patients, designating it as T cell lymphoma-associated lncRNA1 (TCLlnc1). The biological function of TCLlnc1 on T-lymphoma cell proliferation and migration was evaluated in vitro and in vivo.

Materials and methods

Patients and clinical specimens

Patients with newly diagnosed, histologically confirmed PTCL treated with cyclophosphamide, doxorubicin, vincristine, and prednisone (CHOP)-based chemotherapy between June 2013 and October 2019 were eligible and enrolled in this study. Exclusion criteria of patients were as previously described¹⁸. One hundred and thirty-eight PTCL patients were included and their characteristics were summarized in Supplementary Table 1. The study was approved by the Shanghai Ruijin Hospital Review Board with informed consent obtained from all patients in accordance with the Declaration of Helsinki. Pathological diagnosis was established according to the World Health Organization classification¹⁹.

Transcriptomic sequencing

Total RNA was extracted from high-quality frozen tumor samples of 40 PTCL cases (from 70 PTCL cases detected for TCLlnc1 levels) using RNA RNeasy Mini Kit (Qiagen, Dusseldorf, German) for RNA sequencing (RNA-seq) and analyzed as previously described^{20–25}.

Cell lines and culture conditions

T-leukemia/lymphoma cell lines Jurkat, Hut78, and embryonic kidney cell line HEK-293T were obtained from the American Type Culture Collection (Manassas, VA, USA) and cultured as previously described²⁶.

Cell cycle assay

Jurkat and Hut78 cells were transfected with TCLlnc1 plasmid or small interfering RNA (siRNA). A total of 1×10^6 Jurkat and Hut78 cells were harvested after 72 h of incubation, stained with propidium iodide (MultiSciences Biotech, Hangzhou, China), and analyzed by flow cytometry²⁶.

Cell proliferation assay

A total of 5×10^3 Jurkat and Hut78 cells were seeded onto 96-well plates per well. After incubation for the indicated time (0, 24, 48, and 72 h), proliferation was measured using Cell Counting Kit-8 (Dojindo, Japan) according to the manufacturer's protocol²⁷.

Transwell assay

Transwell assay was performed as previously described²⁸, the migrated cells in the lower compartments were counted by flow cytometry, and images of the cells fixed on the bottom surface of the filter were taken under the microscope.

Quantitative real-time PCR

RNA expression levels were measured using quantitative real-time polymerase chain reaction (qRT-PCR) as previously described²⁶. Glyceraldehyde-3-phosphate dehydrogenase (*GAPDH*) was used as an endogenous control and Hut78 cells for calibration^{29–31}. The primers (Supplementary Table 2) were provided by Biosune Biotechnology Company (Shanghai, China).

Western blot

Western blot analysis was performed as previously described³². Rabbit anti-heterogeneous nuclear ribonucleoprotein D (HNRNPD) antibody (12382S, Cell Signaling Technology, Danvers, MA, USA) and rabbit anti-Y-box binding protein-1 (YBX1) (9744S, Cell Signaling Technology) antibody were used for western blot. The dilution of primary antibodies was 1:1000. An anti-GAPDH antibody was used as the endogenous loading control.

Fluorescence in situ hybridization (FISH)

The expression of TCLlnc1 in Jurkat cells was examined by using in situ hybridization assay³³, with anti-TCLlnc1 oligodeoxynucleotide probe sets (lncRNA FISH Probe Mix, Sangon Biotech, Shanghai, China).

In vitro transcription

Full length of TCLlnc1 and antisense TCLlnc1 were cloned from the plasmid of TCLlnc1 into downstream of the T7 promoter using Phanta EVO HS Super-Fidelity DNA Polymerase (Vazyme, Nanjing, China). TCLlnc1 and antisense TCLlnc1 with T7 promoter was purified with Wizard® SV Gel and PCR Clean-Up System (Promega, Madison, WI, USA). In vitro transcription assays were performed using MEGAscript™ T7 Transcription Kit according to the manufacturer's instructions (Invitrogen).

RNA pull-down assay

RNA pull-down assays were performed with Pierce™ Magnetic RNA-Protein Pull-Down Kit (Thermo) according to the manufacturer's instructions³⁴.

RNA immunoprecipitation

RNA immunoprecipitation (RIP) experiments were performed using the Magna RIP™ Kit (Millipore, Billerica, MA, USA). The co-precipitated RNAs were detected by RT-PCR. To demonstrate that the detected RNA signals specifically bind to either HNRNPD or YBX1, the total RNA (input controls) and normal rabbit IgG controls were simultaneously assayed.

Plasmids, lentivirus construction, and small interfering RNAs

Full-length TCLlnc1 was cloned into the vector pLenti CMV-MCS-EF1 α -ZsGreen1-PGK-Puro for over-expression (Lingke Biotech, Shanghai, China). All short hairpin RNA (shRNA) lentivirus and siRNAs involved in the study were constructed by Lingke Biotech. All siRNA sequences are provided in Supplementary Table 3.

Co-immunoprecipitation (Co-IP)

Manual immunoprecipitation was performed according to Pierce™ Classic Magnetic IP/Co-IP Kit User Guide (Thermo). Both the input and co-IP samples were analyzed by western blot analysis using anti-HNRNPD or anti-YBX1 antibodies (Cell Signaling Technology).

Luciferase reporter assay

The designated combinations of indicated plasmids and other relevant siRNAs plus pRL-TK-Renilla were transfected into HEK-293T cells with the Lipofectamine 3000 reagent (Invitrogen), and luciferase activity was detected using the Dual-Luciferase Reporter Assay System (Promega).

In vivo experiments

Female BALB/c nude mice 5 to 6 weeks of age were purchased from the Shanghai Laboratory Animal Center (Shanghai, China). All experiments were performed in accordance with relevant institutional and national guidelines and the regulations of the Shanghai Medical Experimental Animal Care Commission. The subject was approved by the Laboratory Animal Ethics Committee of Ruijin Hospital affiliated with Shanghai Jiao Tong University School of Medicine. In vivo experiments were performed as previously described²⁶.

Statistical analysis

All statistical analyses were performed using SPSS 21.0 (IBM, Armonk, NY, USA). The significance of the differences between groups was estimated using either the Student's *t* test, χ^2 test, or Mann-Whitney *U* test. Progression-free survival (PFS) and overall survival (OS) were calculated using the Kaplan-Meier method with the log-rank test for comparisons. The Cox regression and proportional hazards models were used for univariate/

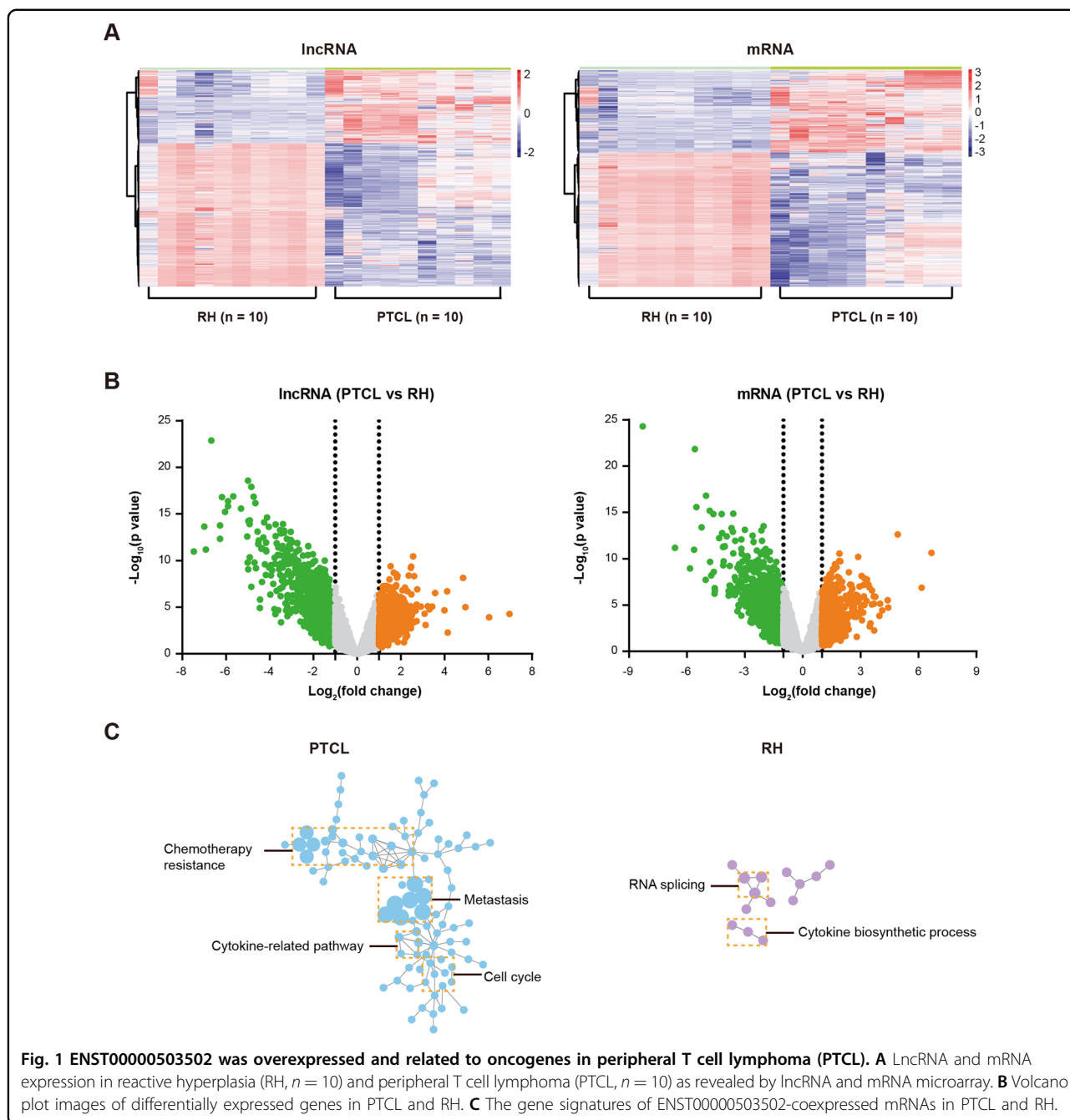
multivariate analysis. A value of $P < 0.05$ indicated a significant difference.

Results

LncRNA candidate ENST00000503502 is clinically relevant in PTCL

LncRNA expression profile was examined in tissue samples of ten PTCL and ten reactive hyperplasia (RH) using Arraystar Human LncRNA Microarray v2.0. In total, 33,045 lncRNAs and 30,215 mRNAs were collected from the authoritative databases RefSeq, UCSC Known Genes dataset, Ensembl, and related literatures, as per the manufacturer's instructions. Heatmap displayed differentially expressed lncRNAs and mRNAs in PTCL, as compared to RH (Fig. 1A). To identify potential oncogenic lncRNAs, more stringent filtering criteria (raw signal intensity >2000 , fold change >2 , $P < 0.01$, 200 nt $<$ RNA length $<$ 1000 nt, Fig. 1B) were used and 54 upregulated lncRNAs were obtained; lncRNA-mRNA co-expression network analysis was performed using the Cytoscape software. The top five lncRNAs (ENST00000394174, ENST00000432567, ENST00000503502, ENST00000456305, and NR_033390) with more co-expressed oncogenes (according to the Catalogue Of Somatic Mutations In Cancer [COSMIC, <https://cancer.sanger.ac.uk>] database) in PTCL than in RH were identified as candidate lncRNAs and assessed by qRT-PCR (Supplementary Fig. 1A). As shown in Supplementary Fig. 1B, ENST00000503502 expression level was significantly higher in PTCL tissues compared with RH tissues ($P = 0.0004$). Thus, among the candidate lncRNAs, ENST00000503502 presented a significant increase in PTCL and had the strongest correlation with the expression of oncogenes, which mainly involved in the cell cycle, cytokine-related pathways, metastasis, and chemotherapy resistance (Fig. 1C); thereby, ENST00000503502 was designated TCLlnc1, and further exploration of clinical significance and biological functions should be explored. TCLlnc1 was located in chromosome 4 (chr4:139,546,266–139,546,727) with a 462 nt length and identified as a lncRNA rather than a protein-coding transcript by CPC (Coding Potential Calculator, <http://cpc.cbi.pku.edu.cn>). An analysis was performed on the coding potential using CPAT (Coding Potential Assessment Tool, <http://lilab.research.bcm.edu/cpat>), and the results indicated that TCLlnc1 was unlikely to encode any protein product (Supplementary Fig. 1C).

In order to validate the microarray data, TCLlnc1 expression was detected by qRT-PCR in tumor samples of 70 PTCL patients, including 9 cases of ALK⁺ALCL, 6 cases of ALK⁻ALCL, 23 cases of AITL, and 32 cases of PTCL-NOS, as well as 16 cases of RH. Compared with RH (0.224 ± 0.101), the expression level of TCLlnc1 was significantly increased in the main subtypes of PTCL (ALK⁺ALCL, 0.292 ± 0.077 , $P = 0.0272$, ALK⁻ALCL, 2.075 ± 0.682 , $P = 0.0005$, AITL, 0.982 ± 0.379 , $P =$



0.0005, and PTCL-NOS, 1.386 ± 0.365 , $P = 0.0002$, Fig. 2A). Moreover, the expression of TCLlnc1 in serum positively correlated with TCLlnc1 in tumors of PTCL patients ($P < 0.0001$, Fig. 2B). TCLlnc1 expression was then assessed in enlarged serum samples of 138 PTCL patients, including 18 cases of ALK⁺ALCL, 12 cases of ALK⁻ALCL, 53 cases of AITL, and 55 cases of PTCL-NOS, as well as in 10 cases of RH and 10 cases of healthy volunteers (HVs). Serum TCLlnc1 was significantly higher in PTCL patients (ALK⁺ALCL, 0.651 ± 0.134 , $P < 0.0001$,

ALK⁻ALCL, 3.940 ± 1.625 , $P < 0.0001$, AITL, 1.879 ± 0.335 , $P < 0.0001$, and PTCL-NOS, 2.986 ± 0.457 , $P < 0.0001$) than in HV (0.076 ± 0.030), no significant difference was observed between RH and HV ($P = 0.5288$, Fig. 2C).

As shown in Table 1, 138 PTCL patients were divided into high- and low-expression groups based on the median value of TCLlnc1. High TCLlnc1 expression group was significantly associated with extranodal involvement ($P = 0.0152$), high-risk International Prognostic Index (IPI) ($P = 0.0063$), and poor chemotherapy

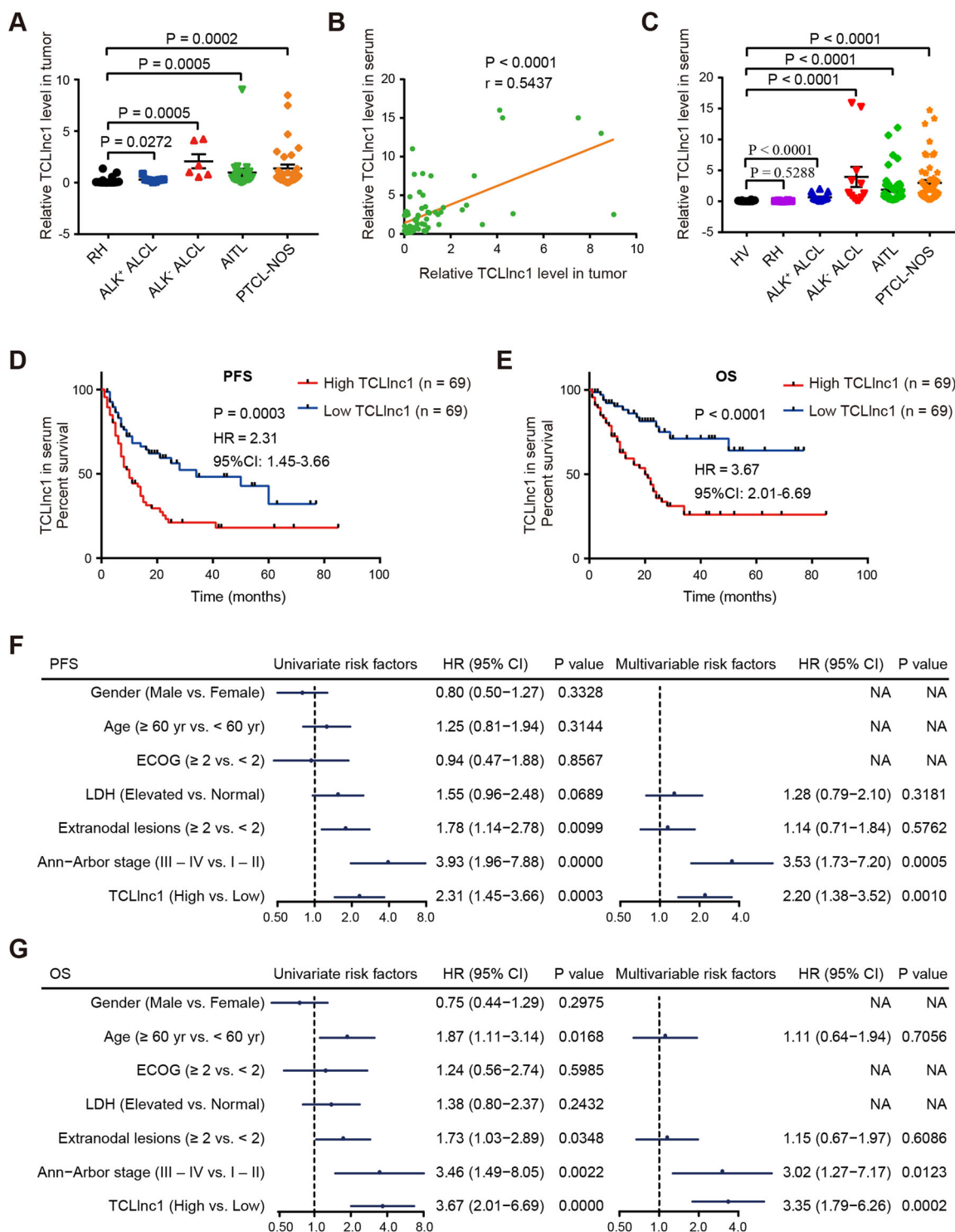


Fig. 2 TCLInc1 was clinically relevant in PTCL. **A** Expression of TCLInc1 in tumors of anaplastic large-cell lymphoma (ALCL)-anaplastic lymphoma kinase (ALK)-positive (ALK⁺ALCL, *n* = 9), ALCL-ALK negative (ALK⁻ALCL, *n* = 6), angioimmunoblastic T cell lymphoma (AITL, *n* = 23), and peripheral T cell lymphoma-not otherwise specified (PTCL-NOS, *n* = 32), as compared to RH (*n* = 16) by quantitative real-time polymerase chain reaction (qRT-PCR). **B** Correlation between TCLInc1 expression in tumor and in serum of PTCL patients (*n* = 70). **C** Expression of TCLInc1 in serum of RH (*n* = 10), ALK⁺ALCL (*n* = 18), ALK⁻ALCL (*n* = 12), AITL (*n* = 53), and PTCL-NOS (*n* = 55) in comparison with healthy volunteers (HV, *n* = 10). TCLInc1 expression was quantified by qRT-PCR. **D, E** Progression-free survival (PFS, **D**) and overall survival (OS, **E**) of PTCL patients according to TCLInc1 expression in serum (*n* = 138). **F, G** Univariate and multivariate analysis for PFS (**F**) and OS (**G**) in PTCL (*n* = 138).

Table 1 Clinicopathological characteristics of PTCL patients according to TCLlnc1 expression in serum (n = 138)^a.

Variables	Low TCLlnc1 (n = 69)	High TCLlnc1 (n = 69)	P value
Gender			0.4650
Female	20 (29%)	24 (35%)	
Male	49 (71%)	45 (65%)	
Age (years)			0.1677
<60	44 (64%)	36 (52%)	
≥60	25 (36%)	33 (48%)	
ECOG			0.8127
0–1	58 (84%)	59 (86%)	
≥2	11 (16%)	10 (14%)	
LDH level			0.4823
Normal	24 (35%)	28 (41%)	
Elevated	45 (65%)	41 (59%)	
Extranodal involvement			0.0152
<2	48 (70%)	34 (49%)	
≥2	21 (30%)	35 (51%)	
Ann Arbor stage			0.2359
I–II	20 (29%)	14 (20%)	
III–IV	49 (71%)	55 (80%)	
IPI			0.0063
Low risk	45 (65%)	29 (42%)	
High risk	24 (35%)	40 (58%)	
Response to treatment			0.0006
CR	41 (59%)	21 (30%)	
Non-CR	28 (41%)	48 (70%)	

ECOG Eastern Cooperative Oncology Group, LDH lactic dehydrogenase, IPI International Prognostic Index, CR complete remission.
^a χ^2 test.

response ($P = 0.0006$). Accordingly, median PFS and OS of the patients in the high TCLlnc1 expression group were 10 and 20 months, respectively; significantly shorter than those of the low TCLlnc1 expression group (34 months, $P = 0.0003$, Fig. 2D, and not arrived, $P < 0.0001$, respectively, Fig. 2E). Univariate analysis showed that multiple extranodal involvements, advanced stage, and high levels of serum TCLlnc1 were adverse prognostic factors for both PFS and OS. When using multivariate analysis, high level of serum TCLlnc1 and advanced stage were independent adverse prognostic factors for both PFS and OS (Fig. 2F, G).

TCLlnc1 promotes T-lymphoma cell proliferation and migration in vitro

To further determine the biological function of TCLlnc1 in PTCL, overexpression and knockdown of TCLlnc1 were performed using TCLlnc1 plasmid and siRNA on T-lymphoma cell line Jurkat and Hut78. The expression level of TCLlnc1 was measured by qRT-PCR, and Jurkat cells expressed a higher level of TCLlnc1 than those of Hut78 cells (0.076 ± 0.004 vs. 0.033 ± 0.003 , $P = 0.0013$, Fig. 3A). Jurkat and Hut78 cells transfected with TCLlnc1 plasmid showed higher expression levels of TCLlnc1 than cells transfected with vectors (Jurkat: 0.401 ± 0.090 vs. 0.076 ± 0.004 , $P = 0.0230$, Fig. 3B; Hut78: 0.474 ± 0.038 vs. 0.033 ± 0.003 , $P = 0.0003$, Supplementary Fig. 2A). After a 72-h culture, overexpression of TCLlnc1 significantly increased cell proliferation, as compared to vector cells (Jurkat: 1.471 ± 0.085 vs. 0.927 ± 0.150 , $P = 0.0341$, Fig. 3C; Hut78: 2.230 ± 0.042 vs. 1.602 ± 0.136 , $P = 0.0116$, Supplementary Fig. 2B). Flow cytometric analysis revealed that TCLlnc1 decreased tumor cell arrest in the G₀/G₁ phase (Jurkat, TCLlnc1 vs. control vector: $41.240 \pm 0.413\%$ vs. $46.980 \pm 0.927\%$, $P = 0.0048$; Hut78, TCLlnc1 vs. control vector: $22.810 \pm 0.550\%$ vs. $31.170 \pm 0.260\%$, $P = 0.0002$), with an obvious increase in S-phase cells (Jurkat, TCLlnc1 vs. control vector: $46.350 \pm 1.524\%$ vs. $40.000 \pm 1.176\%$, $P = 0.0299$, Fig. 3D; Hut78, TCLlnc1 vs. control vector: $51.250 \pm 1.407\%$ vs. $46.260\% \pm 0.806\%$, $P = 0.0372$, Supplementary Fig. 2C). Meanwhile, overexpression of TCLlnc1 significantly promoted cell migration, as compared to vector cells (Jurkat, 12190 ± 1067 vs. 8672 ± 1060 , $P = 0.0341$, Fig. 3E; Hut78, $26,500 \pm 4162$ vs. $12,702 \pm 1179$, $P = 0.0332$, Supplementary Fig. 2D). T-lymphoma cells with TCLlnc1 knockdown had significantly lower TCLlnc1 expression levels than siRNA-NC cells (Jurkat, 0.023 ± 0.002 vs. 0.063 ± 0.005 , $P = 0.0020$, Fig. 3F; Hut78, 0.005 ± 0.001 vs. 0.014 ± 0.001 , $P = 0.0001$, Supplementary Fig. 2E). Knockdown of TCLlnc1 significantly reduced cell proliferation (Jurkat, 0.927 ± 0.076 vs. 1.710 ± 0.104 , $P = 0.0036$, Fig. 3G; Hut78, 1.320 ± 0.141 vs. 1.845 ± 0.058 , $P = 0.0261$, Supplementary Fig. 2F), decreased S-phase cells (Jurkat, $25.200 \pm 1.199\%$ vs. $44.700 \pm 3.794\%$, $P = 0.0080$, Fig. 3H; Hut78, $34.250 \pm 1.831\%$ vs. $43.610\% \pm 1.717\%$, $P = 0.0203$, Supplementary Fig. 2G) and retarded cell migration (Jurkat, $21,070 \pm 8331$ vs. $51,844 \pm 6899$, $P = 0.0117$, Fig. 3I; Hut78, 5647 ± 1150 vs. 13673 ± 2442 , $P = 0.0410$, Supplementary Fig. 2H).

TCLlnc1 promotes T-lymphoma cell proliferation in vivo

In order to search for in vivo evidence of TCLlnc1 on lymphoma progression, murine xenograft models were established with subcutaneous injection of Jurkat cells stably transfected with pLenti-TCLlnc1 or pLenti-Vector (as control), as well as pLenti-shRNA-TCLlnc1 or pLenti-

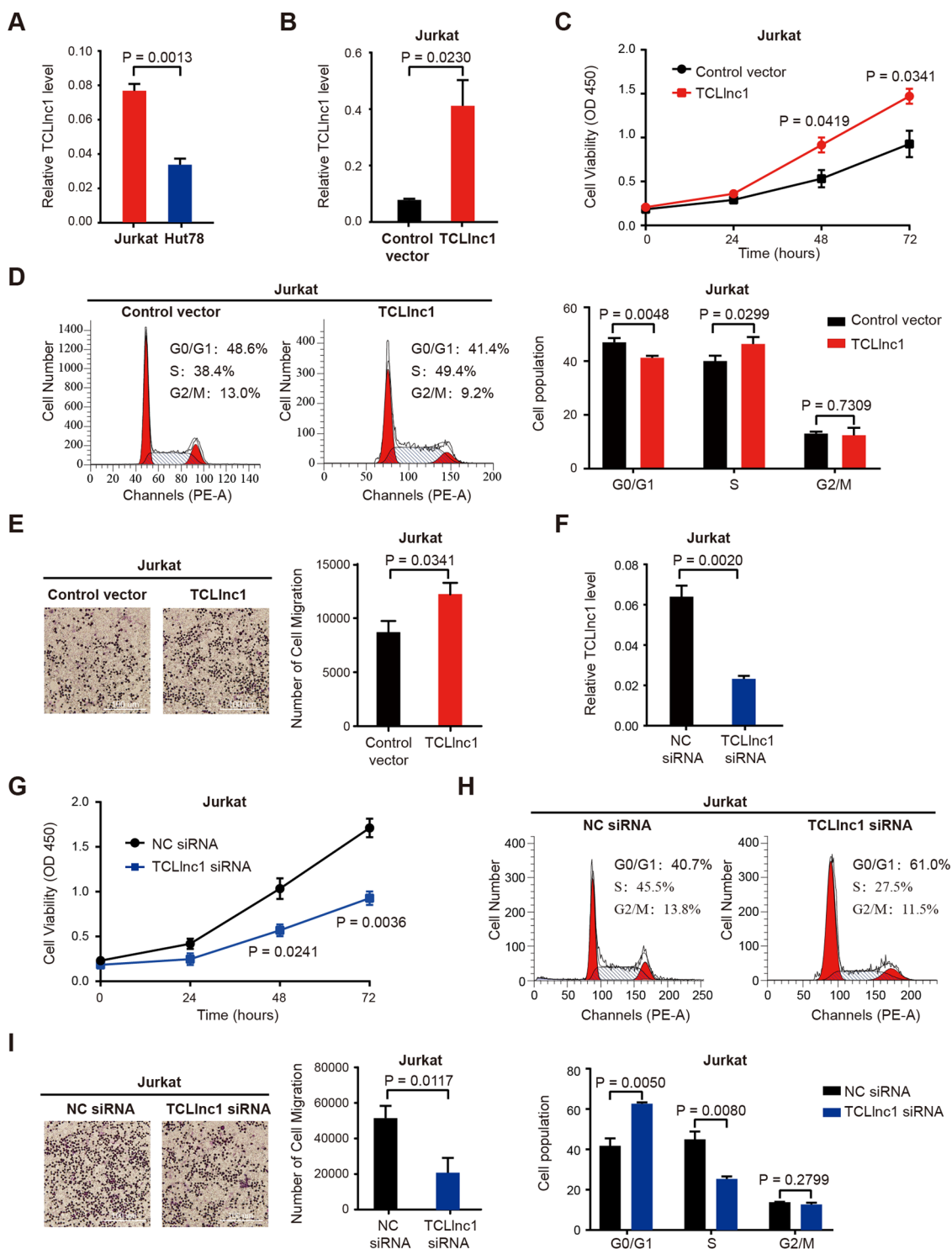
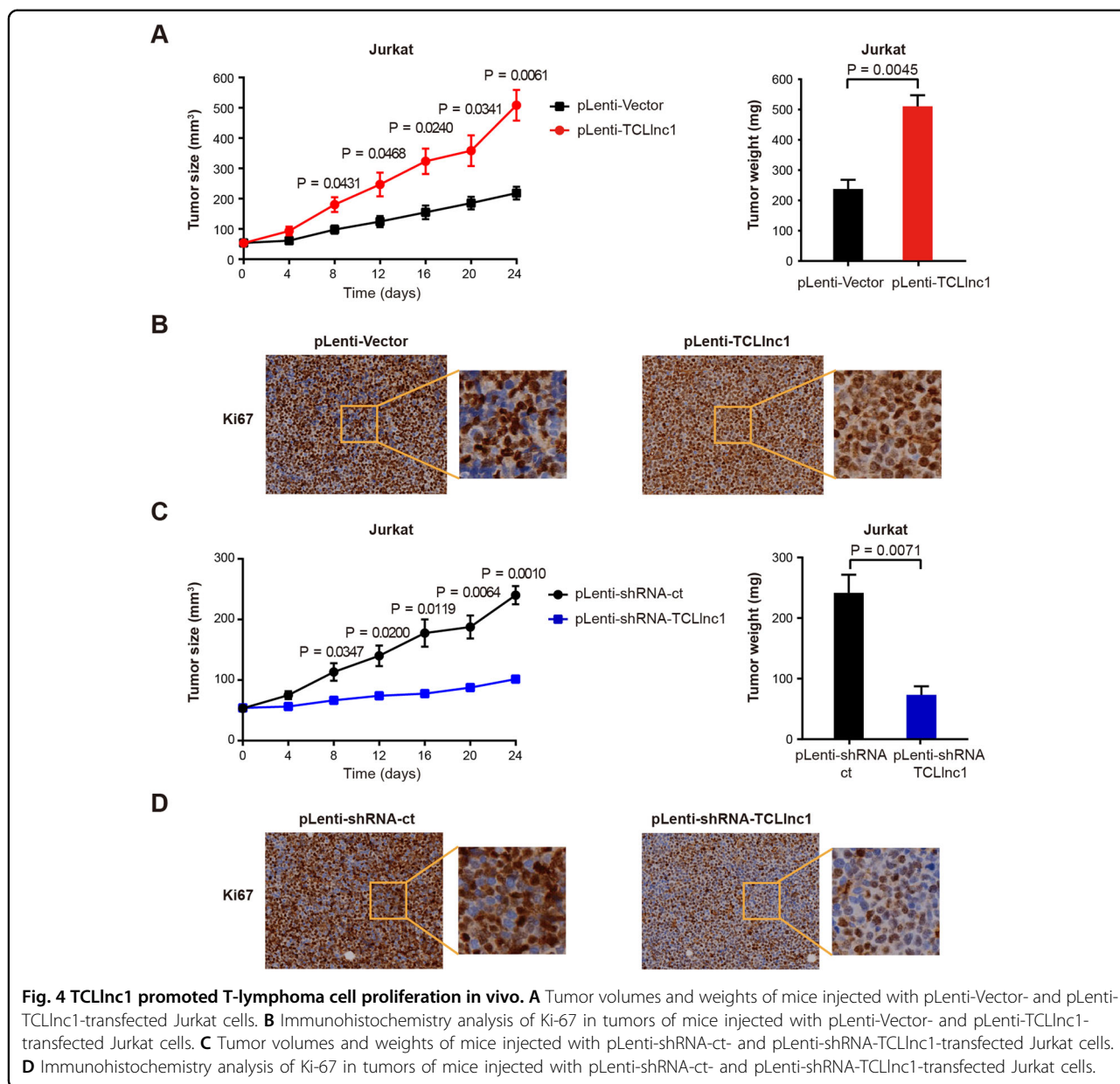


Fig. 3 TCLinc1 promoted T-lymphoma cell proliferation and migration in vitro. **A** Expression of TCLinc1 in Jurkat and Hut78 cells by qRT-PCR. **B** Overexpression of TCLinc1 on Jurkat cells. **C–E** Effect of TCLinc1 overexpression on cell proliferation (**C**), cell cycle (**D**), and cell migration (**E**) of Jurkat cells. Representative fields in transwell assay were captured using an inverted microscope (left) and the total number of migrated cells in the lower compartments was counted by flow cytometry (right). The scale bar represents 100 μ m. **F** Knockdown of TCLinc1 on Jurkat cells. **G–I** Effect of TCLinc1 knockdown on cell proliferation (**G**), cell cycle (**H**), and cell migration (**I**) of Jurkat cells. Representative fields in transwell assay were captured using an inverted microscope (left) and the total number of migrated cells in the lower compartments was counted by flow cytometry (right). The scale bar represents 100 μ m.

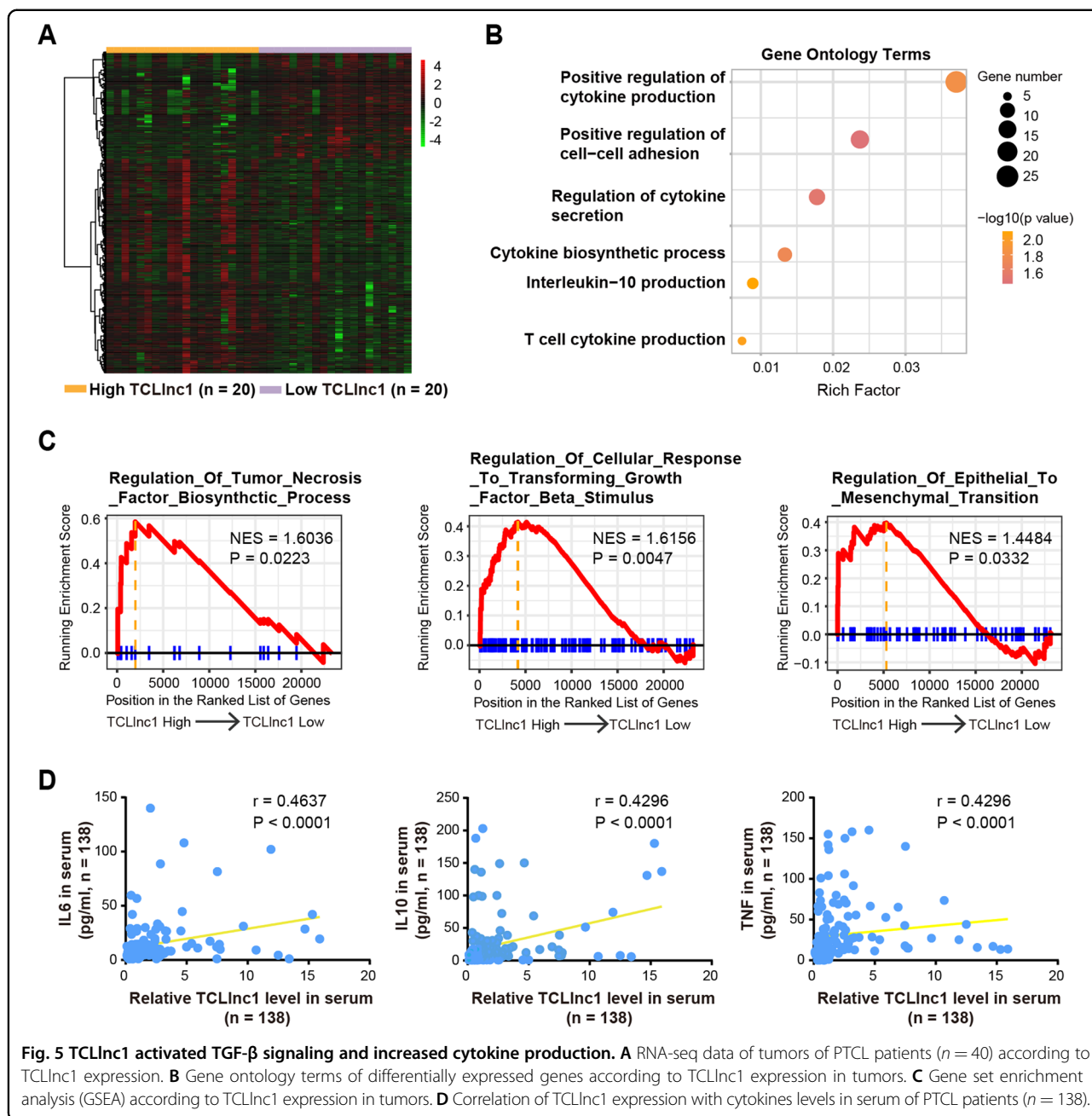


shRNA-ct (as control). The sizes and weights of pLenti-TCLI1 tumors were significantly larger than those of pLenti-Vector tumors (Fig. 4A). Tumors of pLenti-TCLI1 exhibited increased positivity of Ki-67 (Fig. 4B). Accordingly, knockdown of TCLI1 reduced tumor growth, thus affecting the weight of pLenti-shRNA-TCLI1 tumors, as compared to pLenti-shRNA-ct tumors (Fig. 4C). Tumors of pLenti-shRNA-TCLI1 exhibited decreased positivity of Ki-67 (Fig. 4D).

TCLI1 activates tumor growth factor (TGF-β) signaling and regulates cytokine production

To better understand the underlying molecular mechanism of TCLI1, we performed RNA-seq analysis to

obtain the transcriptional profiles in tumor samples of PTCL patients according to TCLI1 expression. Forty PTCL patients were divided into high- and low-expression groups based on the median value of TCLI1. A total of 1115 differentially expressed transcripts (fold change ≥1.5, *P* < 0.05) were identified; these included 372 upregulated and 743 downregulated transcripts (Fig. 5A). Gene ontology (GO) analysis showed that the most significantly altered biological processes included pathways involved in cytokine production, cell-cell adhesion, and cytokine secretion (Fig. 5B). Gene set enrichment analysis (GSEA) revealed that the gene sets were significantly related to regulation of tumor necrosis factor (TNF) biosynthetic process, cellular response to TGF-β stimulus, and



regulation of epithelial to mesenchymal transition (Fig. 5C). Clinically, the correlation between the expression levels of TCLlnc1 and cytokines, such as interleukin-6 (IL-6), IL-10, and TNF in serum (Fig. 5D) of PTCL patients indicated that TCLlnc1 activated TGF- β signaling pathway and regulated cytokine production in PTCL.

TCLlnc1 interacts with HNRNPD and YBX1 as a modular scaffold

LncRNA exerts biological function by physically interacting with transcriptional factors, histone regulators, and

other cellular factors³⁵. FISH assay showed that TCLlnc1 was mainly located in the nucleus of Jurkat cells (Fig. 6A), suggesting that TCLlnc1 may function at the transcriptional level via interacting with nucleus molecules or proteins. To further explore the underlying molecular mechanism, biotinylated TCLlnc1 and antisense TCLlnc1 RNA (negative control) were incubated with total protein extracts from Jurkat cells and pulled down with streptavidin. Only HNRNPD and YBX1 were detected by mass spectrometry from three independent RNA pull-down assays (Fig. 6B) and immunoblotting (Fig. 6C).

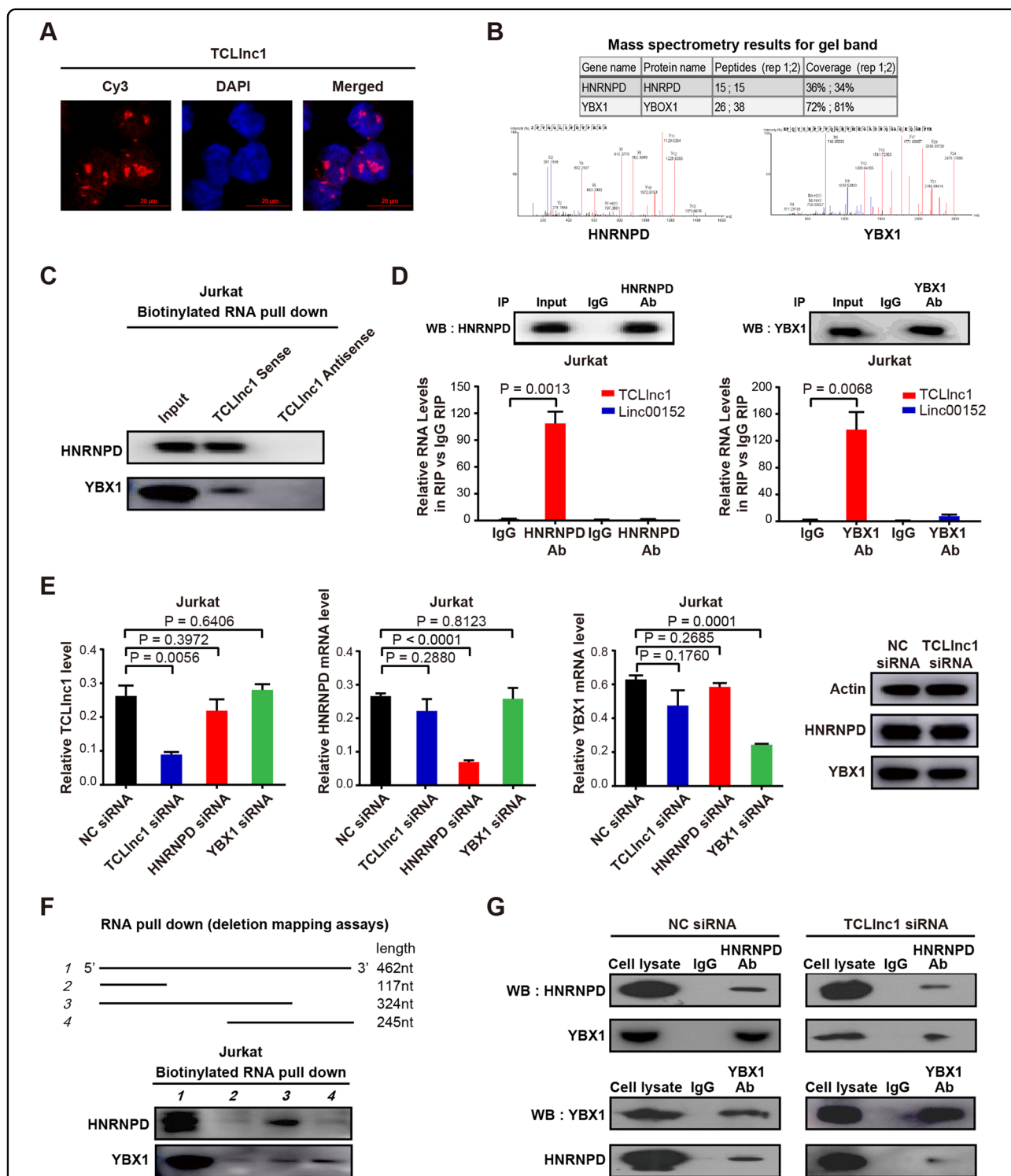


Fig. 6 TCLInc1 physically interacted with heterogeneous nuclear ribonucleoprotein D (HNRNPD) and Y-box binding protein-1 (YBX1). **A** Nuclear location of TCLInc1 in Jurkat cells (red). Nuclei were stained by 4', 6-diamidino-2-phenylindole (DAPI, blue). **B** TCLInc1-binding proteins detected by mass spectrometry. **C** Western blot validation of proteins pulled down with TCLInc1. **D** Interaction of TCLInc1 with HNRNPD and YBX1 detected by RNA immunoprecipitation (RIP) assay. The fold enrichment of TCLInc1 in RIP is relative to its matching IgG control RIP. LncRNA linc00152 was referred as a negative control. **E** Expression of TCLInc1, HNRNPD, and YBX1 after indicated RNA knockdown detected by qRT-PCR and western blot. **F** Western blot analysis of HNRNPD and YBX1 pulled down by full-length or truncated TCLInc1. **G** Interaction of HNRNPD and YBX1 after TCLInc1 knockdown detected by co-immunoprecipitation (co-IP).

Physical interaction of TCLlnc1 with HNRNP and YBX1 was validated by RIP using anti-HNRNP antibody and anti-YBX1 antibody, with linc00152 as a negative control. TCLlnc1 is specifically bound to HNRNP and YBX1 in Jurkat cells (Fig. 6D). In addition, qRT-PCR and western blot assays showed that knockdown of TCLlnc1 had no effect on HNRNP and YBX1 mRNA expression or protein expression. The knockdown of HNRNP and YBX1 had no effect on TCLlnc1 expression (Fig. 6E). These data indicated that TCLlnc1 physically interacted with HNRNP and YBX1. Subsequently, a series of TCLlnc1 deletion mutants were constructed to map the precise binding regions for HNRNP and YBX1. According to in vitro RNA pull-down assays, segment 1–324 nt of TCLlnc1 interacted with HNRNP, while segment 216–462 nt of TCLlnc1 interacted with YBX1 (Fig. 6F). Moreover, as revealed by co-IP, HNRNP, and YBX1 interacted with each other in Jurkat cells and could be attenuated by knockdown of TCLlnc1 (Fig. 6G). Together, TCLlnc1 was important for HNRNP and YBX1 complex formation as a modular scaffold.

TCLlnc1 functions with HNRNP and YBX1 complex in regulating TGF- β signaling pathway

Because lncRNA regulates downstream genes expression by interacting with transcription factors, we next investigated which of the TGF- β signaling pathway genes are regulated by the TCLlnc1, HNRNP and YBX1 complex. As shown by qRT-PCR in Jurkat cells, the relative mRNA expression level of TGF- β 2 (*TGFB2*) and TGF- β receptor 1 (*TGFB1*) was significantly upregulated by overexpression of TCLlnc1 (*TGFB2*: 1.004 ± 0.064 vs. 2.471 ± 0.350 , $P = 0.0146$; *TGFB1*: 1.049 ± 0.044 vs. 2.105 ± 0.323 , $P = 0.0316$), HNRNP (*TGFB2*: 1.004 ± 0.064 vs. 2.311 ± 0.229 , $P = 0.0054$; *TGFB1*: 1.049 ± 0.044 vs. 1.653 ± 0.061 , $P = 0.0013$), and YBX1 (*TGFB2*: 1.004 ± 0.064 vs. 2.777 ± 0.240 , $P = 0.0020$; *TGFB1*: 1.049 ± 0.044 vs. 1.920 ± 0.087 , $P = 0.0009$) (Fig. 7A), but was downregulated by knockdown of TCLlnc1 (*TGFB2*: 1.004 ± 0.065 vs. 0.338 ± 0.093 , $P = 0.0042$; *TGFB1*: 1.000 ± 0.225 vs. 0.446 ± 0.060 , $P = 0.0010$), HNRNP (*TGFB2*: 1.004 ± 0.065 vs. 0.620 ± 0.023 , $P = 0.0051$; *TGFB1*: 1.000 ± 0.225 vs. 0.548 ± 0.016 , $P < 0.0001$), and YBX1 (*TGFB2*: 1.004 ± 0.065 vs. 0.509 ± 0.034 , $P = 0.0025$; *TGFB1*: 1.000 ± 0.225 vs. 0.4777 ± 0.047 , $P = 0.0006$) (Fig. 7B). Other key genes of TGF- β signaling pathway were not altered by TCLlnc1, HNRNP, or YBX1, such as TGF- β 1 (*TGFB1*), TGF- β 3 (*TGFB3*), TGF- β receptor 2 (*TGFB2*), and *SMAD2*, *SMAD3*, *SMAD4* (Supplementary Fig. 3A). qRT-PCR analysis of *TGFB2* and *TGFB1* expression was performed in the pLenti-Vector, pLenti-TCLlnc1-, pLenti-shRNA-NC-, and pLenti-shRNA-TCLlnc1-transfected Jurkat cells, revealing similar results in vivo (Supplementary Fig. 3B).

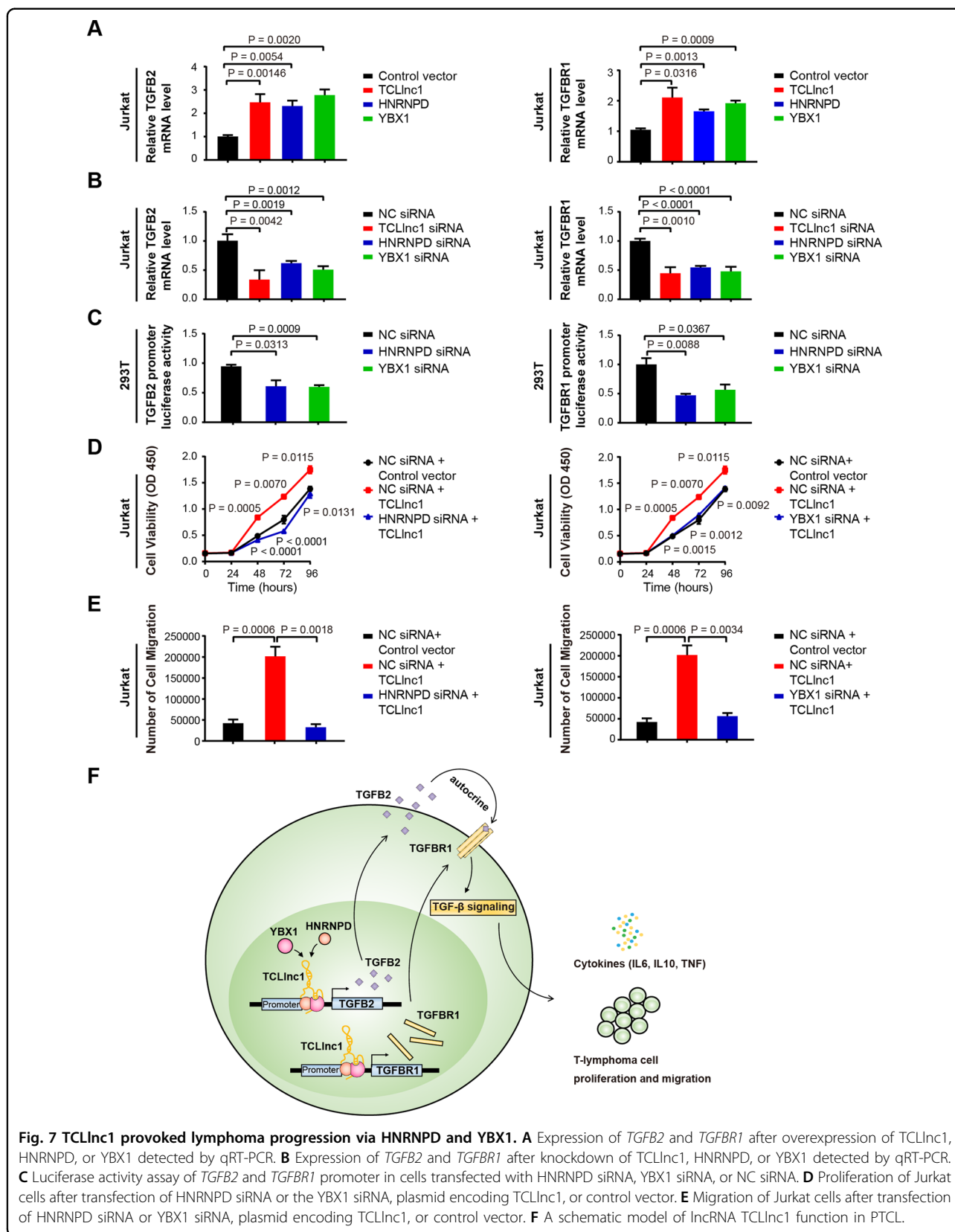
To finally confirm the direct regulation of TCLlnc1/HNRNP/YBX1 complex to *TGFB2* and *TGFB1* expression, luciferase assays were performed. As expected, HNRNP and YBX1 activated *TGFB2* and *TGFB1* transcription by binding to the promoters of *TGFB2* and *TGFB1* (Fig. 7C). The knockdown of HNRNP or YBX1 reversed TCLlnc1-mediated cell proliferation (Fig. 7D) and migration (Fig. 7E). These data demonstrated that TCLlnc1 exerted its function by binding to HNRNP and YBX1. TCLlnc1/HNRNP/YBX1 complex regulated key gene transcription to activate TGF- β signaling pathway, induce cytokine production, and promote cell proliferation and invasion in PTCL (Fig. 7F).

Discussion

LncRNAs are aberrantly expressed in various cancers and actively participate in disease progression¹². In the present study, TCLlnc1 was identified as a lncRNA overexpressed in the main PTCL histological subtypes linked to both lymphoma cell proliferation and in vitro and in vivo migration. Of note, circulating lncRNAs have potential utility as noninvasive and blood-based biomarkers³⁶. Accordingly, we revealed that serum TCLlnc1 expression correlated with tumor TCLlnc1 expression and was significantly associated with extranodal involvement, high-risk IPI, and independently indicated poor patients' clinical outcomes. Therefore, not only do our findings support the essential role TCLlnc1 plays during tumor progression, but we also provide a potential biomarker for PTCL disease prognosis prediction.

TGF- β signaling pathway represents one of the best-recognized cascades modulating tumor proliferation and migration³⁷. We showed that TCLlnc1 overexpression led to the activation of TGF- β signaling pathway and production of cytokines, such as IL-6, IL-10, and TNF. The results are consistent with the previous study regarding cutaneous T cell lymphoma, stating that TGF- β and IL-10 are hallmarks of advanced stages, increased cell migration, and decreased antitumor responses³⁸. TGF- β is composed of three isoforms, TGFB1, TGFB2, and TGFB3. In order to activate the TGF- β signaling pathway, TGF- β isoforms bind to TGFB2, thereby recruiting TGFB1 and upregulate downstream cascade³⁷. Here, *TGFB2* and *TGFB1* were potential targets of TGF- β signaling activation provoked by TCLlnc1 overexpression. Galunieritib, a small-molecular inhibitor of TGFB1, has recently been reported to possess efficient tumor inhibitory activity in breast cancer³⁹ and multiple myeloma⁴⁰. Based on the fact that TCLlnc1 promoted both tumor growth and the migration of PTCL via TGF- β signaling activation, therapeutic targeting of TGF- β may counteract tumor progression in PTCL with TCLlnc1 overexpression.

LncRNAs interact with RNA-binding proteins to form nuclear ribonucleoprotein complexes, which are crucial



regulators of transcriptional programs in the nucleus^{41,42}. Our results demonstrated that TCLlnc1 directly interacted with HNRNPD and YBX1 and acts as a modular scaffold in PTCL. HNRNPs represent an RNA-binding ribonucleoprotein family of transcription activators that are implicated in RNA stability and gene expression regulation in various cancers⁴¹. In colorectal cancer, HNRNPD interacts with LINC01354 and contributes to proliferation and metastasis through the activation of the Wnt/ β -catenin signaling pathway⁴³. YBX1 is also a transcription activator of the RNA- and DNA-binding domain. The RNA-binding domain can bind to lncRNA or mRNA, whereas the DNA-binding domain binds to a consensus sequence in the target genes promoter, implicating numerous cellular processes, particularly tumorigenesis⁴⁴. More importantly, in multiple cancer types, S-phase-enriched lncRNAs interact with HNRNPK–YBX1 complex and affect cancer cell hallmarks through regulating phosphatidylinositol-3-kinase/AKT and MAPK signaling activation⁴⁵. Our findings indicated that HNRNPD and YBX1 are required for TCLlnc1-mediated regulation of TGF- β signaling pathway, as well as T-lymphoma cell proliferation and migration. The results further strengthen the understanding of lncRNA as an oncogenic driver on PTCL progression.

Conclusions

TCLlnc1 is a clinically, functionally, and mechanistically oncogenic lncRNA in PTCL. TCLlnc1 and its downstream signaling pathway may be meaningful for risk stratification and targeted therapy in patients with PTCL.

Acknowledgements

We appreciate the effort of the physicians in enrolling patients and thank all the patients involved for allowing us to analyze their clinical data.

Author details

¹Shanghai Institute of Hematology, State Key Laboratory of Medical Genomics, National Research Center for Translational Medicine at Shanghai, Ruijin Hospital Affiliated to Shanghai Jiao Tong University School of Medicine, Shanghai, China. ²Department of Pathology, Ruijin Hospital Affiliated to Shanghai Jiao Tong University School of Medicine, Shanghai, China. ³Pôle de Recherches Sino-Français en Science du Vivant et Génomique, Ruijin Hospital Affiliated to Shanghai Jiao Tong University School of Medicine, Shanghai, China. ⁴U1165 Inserm/Université Paris 7, Hôpital Saint Louis, Paris, France

Author contributions

P.Z. and M.-M.J. carried out the experiments and wrote the manuscript. Y.F. performed qRT-PCR and analyzed data. X.L. and Z.-X.Y. prepared biological samples. S.C., P.-P.X., and A.J. gathered detailed clinical information for the study and analyzed the data. H.-M.Y. and C.-F.W. performed pathological research. C.-F.W., L.W., and W.-L.Z. conceived the study, directed and supervised research, and wrote the manuscript. All authors read and approved the final manuscript.

Funding

This study was supported, in part, by research funding from the National Natural Science Foundation of China (81670176, 81520108003, and 81830007); the Chang Jiang Scholars Program; the Shanghai Municipal Education Commission Gaofeng Clinical Medicine Grant Support (20152206 and

20152208); Clinical Research Plan of Shanghai Hospital Development Center (SHDC2020CR1032B); Shanghai Science and Technology Development fund (19MC1911000); the Multicenter Clinical Research Project by Shanghai Jiao Tong University School of Medicine (DLY201601); the Collaborative Innovation Center of Systems Biomedicine; and the Samuel Waxman Cancer Research Foundation.

Data availability

The datasets used and/or analyzed during the current study are available from the corresponding author on reasonable request.

Consent for publication

All authors have agreed to publish this manuscript.

Conflict of interest

The authors declare no competing interests.

Ethics approval and consent to participate

The study was approved by the Shanghai Ruijin Hospital review board with informed consent obtained in accordance with the Declaration of Helsinki. Animals were used according to the protocols approved by Shanghai Ruijin Hospital Animal Care and Use Committee.

Publisher's note

Springer Nature remains neutral with regard to jurisdictional claims in published maps and institutional affiliations.

Supplementary information The online version contains supplementary material available at <https://doi.org/10.1038/s41419-021-03594-y>.

Received: 7 October 2020 Revised: 8 February 2021 Accepted: 22 February 2021

Published online: 25 March 2021

References

- Armitage, J. O. The aggressive peripheral T-cell lymphomas: 2017. *Am. J. Hematol.* **92**, 706–715 (2017).
- Marchi, E. & O'Connor, O. A. The rapidly changing landscape in mature T-cell lymphoma (MTCL) biology and management. *CA Cancer J. Clin.* **70**, 47–70 (2020).
- Casulo, C. et al. T-cell lymphoma: recent advances in characterization and new opportunities for treatment. *J. Natl Cancer Inst.* **109**, <https://doi.org/10.1093/jnci/djw248> (2017).
- Ellin, F., Landstrom, J., Jerkeman, M. & Relander, T. Real-world data on prognostic factors and treatment in peripheral T-cell lymphomas: a study from the Swedish Lymphoma Registry. *Blood* **124**, 1570–1577 (2014).
- Zhang, J. Y. et al. Survival following salvage therapy for primary refractory peripheral T-cell lymphomas (PTCL). *Am. J. Hematol.* **93**, 394–400 (2018).
- Haggood, G. & Savage, K. J. The biology and management of systemic anaplastic large cell lymphoma. *Blood* **126**, 17–25 (2015).
- Wilcox, R. A. A three-signal model of T-cell lymphoma pathogenesis. *Am. J. Hematol.* **91**, 113–122 (2016).
- Yang, J. & Wang, X. Role of long non-coding RNAs in lymphoma: a systematic review and clinical perspectives. *Crit. Rev. Oncol/Hematol.* **141**, 13–22 (2019).
- Zheng, Z. et al. MiR155 sensitized B-lymphoma cells to anti-PD-L1 antibody via PD-1/PD-L1-mediated lymphoma cell interaction with CD8+T cells. *Mol. Cancer* **18**, 54 (2019).
- Iyer, M. K. et al. The landscape of long noncoding RNAs in the human transcriptome. *Nat. Genet.* **47**, 199–208 (2015).
- Peng, W. X., Koirala, P. & Mo, Y. Y. LncRNA-mediated regulation of cell signaling in cancer. *Oncogene* **36**, 5661–5667 (2017).
- Bhan, A., Soleimani, M. & Mandal, S. S. Long noncoding RNA and cancer: a new paradigm. *Cancer Res.* **77**, 3965–3981 (2017).
- Zhao, X. & Tian, X. Knockdown of long noncoding RNA HOTAIR inhibits cell growth of human lymphoma cells by upregulation of miR-148b. *J. Cell. Biochem.* **120**, 12348–12359 (2019).
- Ghafari-Fard, S., Esmaili, M. & Taheri, M. Expression of non-coding RNAs in hematological malignancies. *Eur. J. Pharmacol.* **875**, 172976 (2020).

15. YiRen, H. et al. Long noncoding RNA MALAT1 regulates autophagy associated chemoresistance via miR-23b-3p sequestration in gastric cancer. *Mol. Cancer* **16**, 174 (2017).
16. Schmitt, A. M. & Chang, H. Y. Long noncoding RNAs in cancer pathways. *Cancer Cell* **29**, 452–463 (2016).
17. Sanchez Calle, A., Kawamura, Y., Yamamoto, Y., Takeshita, F. & Ochiya, T. Emerging roles of long non-coding RNA in cancer. *Cancer Sci.* **109**, 2093–2100 (2018).
18. Cai, M. C. et al. CEOP/IVE/GDP alternating regimen compared with CEOP as the first-line therapy for newly diagnosed patients with peripheral T cell lymphoma: results from a phase 2, multicenter, randomized, controlled clinical trial. *Genome Med.* **12**, 41 (2020).
19. Polyatskin, I. L., Artemyeva, A. S. & Krivolapov, Y. A. Revised WHO classification of tumors of hematopoietic and lymphoid tissues, 2017 (4th edition) lymphoid tumors. *Arkhiv Patologii* **81**, 59–65 (2019).
20. Xiong, J. et al. Genomic and transcriptomic characterization of natural killer T cell lymphoma. *Cancer Cell* **37**, 403–19.e6 (2020).
21. Kim, D., Langmead, B. & Salzberg, S. L. HISAT: a fast spliced aligner with low memory requirements. *Nat. Methods* **12**, 357–360 (2015).
22. Dobin, A. et al. STAR: ultrafast universal RNA-seq aligner. *Bioinformatics* **29**, 15–21 (2013).
23. Ritchie, M. E. et al. limma powers differential expression analyses for RNA-sequencing and microarray studies. *Nucleic Acids Res.* **43**, e47 (2015).
24. Yu, G., Wang, L. G., Han, Y. & He, Q. Y. clusterProfiler: an R package for comparing biological themes among gene clusters. *Omic* **16**, 284–287 (2012).
25. Subramanian, A. et al. Gene set enrichment analysis: a knowledge-based approach for interpreting genome-wide expression profiles. *Proc. Natl Acad. Sci. USA* **102**, 15545–15550 (2005).
26. Yan, Z. X. et al. MicroRNA187 overexpression is related to tumor progression and determines sensitivity to bortezomib in peripheral T-cell lymphoma. *Leukemia* **28**, 880–887 (2014).
27. Si, W. et al. MTA2-mediated inhibition of PTEN leads to pancreatic ductal adenocarcinoma carcinogenicity. *Cell Death Dis.* **10**, 206 (2019).
28. Zou, J. et al. Notch1 is required for hypoxia-induced proliferation, invasion and chemoresistance of T-cell acute lymphoblastic leukemia cells. *J. Hematol. Oncol.* **6**, 3 (2013).
29. Schmittgen, T. D. & Livak, K. J. Analyzing real-time PCR data by the comparative C(T) method. *Nat. Protoc.* **3**, 1101–1108 (2008).
30. Jin, D. et al. m(6)A demethylase ALKBH5 inhibits tumor growth and metastasis by reducing YTHDFs-mediated YAP expression and inhibiting miR-107/LATS2-mediated YAP activity in NSCLC. *Mol. Cancer* **19**, 40 (2020).
31. Wang, Q. et al. N(6)-methyladenosine METTL3 promotes cervical cancer tumorigenesis and Warburg effect through YTHDF1/HK2 modification. *Cell Death Dis.* **11**, 911 (2020).
32. Zhao, P. et al. Long noncoding RNA SNHG6 promotes carcinogenesis by enhancing YBX1-mediated translation of HIF1 α in clear cell renal cell carcinoma. *FASEB J.* **35**, e21160 (2021).
33. Han, M. et al. Exosome-mediated lncRNA AFAP1-AS1 promotes trastuzumab resistance through binding with AUF1 and activating ERBB2 translation. *Mol. Cancer* **19**, 26 (2020).
34. Ramanathan, M., Porter, D. F. & Khavari, P. A. Methods to study RNA-protein interactions. *Nat. Methods* **16**, 225–234 (2019).
35. Yao, R. W., Wang, Y. & Chen, L. L. Cellular functions of long noncoding RNAs. *Nat. Cell Biol.* **21**, 542–551 (2019).
36. Anfossi, S., Babayan, A., Pantel, K. & Calin, G. A. Clinical utility of circulating non-coding RNAs - an update. *Nat. Rev. Clin. Oncol.* **15**, 541–563 (2018).
37. Seoane, J. & Gomis, R. R. TGF- β family signaling in tumor suppression and cancer progression. *Cold Spring Harbor Perspect. Biol.* **9**, <https://doi.org/10.1101/cshperspect.a022277> (2017).
38. Chang, T. P., Poltoratsky, V. & Vancurova, I. Bortezomib inhibits expression of TGF-beta1, IL-10, and CXCR4, resulting in decreased survival and migration of cutaneous T cell lymphoma cells. *J. Immunol.* **194**, 2942–2953 (2015).
39. Holmgaard, R. B. et al. Targeting the TGF β pathway with galunisertib, a TGF β RI small molecule inhibitor, promotes anti-tumor immunity leading to durable, complete responses, as monotherapy and in combination with checkpoint blockade. *J. Immunother. Cancer* **6**, 47 (2018).
40. Santini, V. et al. Phase II study of the ALK5 inhibitor galunisertib in very low-, low-, and intermediate-risk myelodysplastic syndromes. *Clin. Cancer Res.* **25**, 6976–6985 (2019).
41. Geuens, T., Bouhy, D. & Timmerman, V. The hnRNP family: insights into their role in health and disease. *Hum. Genet.* **135**, 851–867 (2016).
42. Sun, Q., Hao, Q. & Prasanth, K. V. Nuclear long noncoding RNAs: key regulators of gene expression. *Trends Genet.* **34**, 142–157 (2018).
43. Li, J., He, M., Xu, W. & Huang, S. LINC01354 interacting with hnRNP-D contributes to the proliferation and metastasis in colorectal cancer through activating Wnt/ β -catenin signaling pathway. *J. Exp. Clin. Cancer Res.* **38**, 161 (2019).
44. Kohno, K., Izumi, H., Uchiyama, T., Ashizuka, M. & Kuwano, M. The pleiotropic functions of the Y-box-binding protein, YB-1. *BioEssays* **25**, 691–698 (2003).
45. Ali, M. M. et al. PAN-cancer analysis of S-phase enriched lncRNAs identifies oncogenic drivers and biomarkers. *Nat. Commun.* **9**, 883 (2018).