



**HAL**  
open science

## Large-scale cryovolcanic resurfacing on Pluto

Kelsi Singer, Oliver White, Bernard Schmitt, Erika Rader, Silvia Protopapa, William Grundy, Dale Cruikshank, Tanguy Bertrand, Paul Schenk, William Mckinnon, et al.

► **To cite this version:**

Kelsi Singer, Oliver White, Bernard Schmitt, Erika Rader, Silvia Protopapa, et al.. Large-scale cryovolcanic resurfacing on Pluto. *Nature Communications*, 2022, 13 (1), pp.1542. 10.1038/s41467-022-29056-3 . hal-03666038

**HAL Id: hal-03666038**

**<https://u-paris.hal.science/hal-03666038>**

Submitted on 12 May 2022

















**HAL** is a multi-disciplinary open access archive for the deposit and dissemination of scientific research documents, whether they are published or not. The documents may come from teaching and research institutions in France or abroad, or from public or private research centers.

L'archive ouverte pluridisciplinaire **HAL**, est destinée au dépôt et à la diffusion de documents scientifiques de niveau recherche, publiés ou non, émanant des établissements d'enseignement et de recherche français ou étrangers, des laboratoires publics ou privés.



Distributed under a Creative Commons Attribution 4.0 International License

# Large-scale cryovolcanic resurfacing on Pluto

Kelsi N. Singer <sup>1✉</sup>, Oliver L. White <sup>2</sup>, Bernard Schmitt <sup>3</sup>, Erika L. Rader <sup>4</sup>, Silvia Protopapa<sup>1</sup>, William M. Grundy <sup>5</sup>, Dale P. Cruikshank <sup>6</sup>, Tanguy Bertrand <sup>6,7</sup>, Paul M. Schenk <sup>8</sup>, William B. McKinnon <sup>9</sup>, S. Alan Stern<sup>1</sup>, Rajani D. Dhingra<sup>10</sup>, Kirby D. Runyon<sup>11</sup>, Ross A. Beyer <sup>2</sup>, Veronica J. Bray<sup>12</sup>, Cristina Dalle Ore<sup>2</sup>, John R. Spencer <sup>1</sup>, Jeffrey M. Moore<sup>6</sup>, Francis Nimmo <sup>13</sup>, James T. Keane <sup>10</sup>, Leslie A. Young <sup>1</sup>, Catherine B. Olkin <sup>1</sup>, Tod R. Lauer <sup>14</sup>, Harold A. Weaver<sup>11</sup> & Kimberly Ennico-Smith<sup>6</sup>

The New Horizons spacecraft returned images and compositional data showing that terrains on Pluto span a variety of ages, ranging from relatively ancient, heavily cratered areas to very young surfaces with few-to-no impact craters. One of the regions with very few impact craters is dominated by enormous rises with hummocky flanks. Similar features do not exist anywhere else in the imaged solar system. Here we analyze the geomorphology and composition of the features and conclude this region was resurfaced by cryovolcanic processes, of a type and scale so far unique to Pluto. Creation of this terrain requires multiple eruption sites and a large volume of material ( $>10^4$  km<sup>3</sup>) to form what we propose are multiple, several-km-high domes, some of which merge to form more complex planforms. The existence of these massive features suggests Pluto's interior structure and evolution allows for either enhanced retention of heat or more heat overall than was anticipated before New Horizons, which permitted mobilization of water-ice-rich materials late in Pluto's history.

<sup>1</sup> Southwest Research Institute, Boulder, CO 80302, USA. <sup>2</sup> Carl Sagan Center at the SETI Institute, Mountain View, CA 94043, USA. <sup>3</sup> Université Grenoble Alpes, CNRS, IPAG, F-38000 Grenoble, France. <sup>4</sup> University of Idaho, Moscow, ID 83844, USA. <sup>5</sup> Lowell Observatory, Flagstaff, AZ 86001, USA. <sup>6</sup> National Aeronautics and Space Administration (NASA) Ames Research Center, Space Science Division, Moffett Field, CA 94035, USA. <sup>7</sup> LESIA/Observatoire de Paris, PSL, CNRS UMR 8109, University Pierre et Marie Curie, University Paris-Diderot, 5 place Jules Janssen, F-92195 Meudon Cédex, France. <sup>8</sup> Lunar and Planetary Institute, Houston, TX 77058, USA. <sup>9</sup> Department of Earth and Planetary Sciences, Washington University, St. Louis, MO 63130, USA. <sup>10</sup> Jet Propulsion Laboratory, California Institute of Technology, Pasadena, CA 91109, USA. <sup>11</sup> Johns Hopkins University Applied Physics Laboratory, Laurel, MD 20723, USA. <sup>12</sup> University of Arizona, Tucson, AZ 85721, USA. <sup>13</sup> Department of Earth and Planetary Sciences, University of California, Santa Cruz, CA 95064, USA. <sup>14</sup> National Science Foundation National Optical Infrared Astronomy Research Laboratory, Tucson, AZ 26732, USA.

✉email: [ksinger@boulder.swri.edu](mailto:ksinger@boulder.swri.edu)

Pluto's surface has experienced considerable and ongoing resurfacing through both endogenic and exogenic processes<sup>1–3</sup>. Pluto is the largest body in the Kuiper belt with a radius ( $R$ ) of  $1188.3 \pm 1.6 \text{ km}$ <sup>4</sup> and bulk density constraints for a differentiated Pluto indicate the outer  $\sim 300 \text{ km}$  of Pluto are water-ice-rich overlying a rocky core<sup>5</sup>, with a poorly constrained carbonaceous component<sup>6</sup>. Based on this rock abundance, Pluto is expected to have maintained relatively low levels of radiogenic heating ( $\lesssim 5 \text{ mW m}^{-2}$ ) throughout much of its history<sup>7,8</sup>. Pluto's largest moon Charon ( $R = 606.0 \pm 1.0 \text{ km}$ ) likely formed through a large, grazing impact with Pluto<sup>9,10</sup>. Models predict the tidal evolution of Pluto and Charon progressed rapidly after the impact, and any tidal heating should have ended very early in their history ( $< 100 \text{ Myrs}$  after the impact)<sup>11</sup>. Despite these constraints, modelling suggests a subsurface water-rich ocean could potentially persist into the present on Pluto<sup>8,12–15</sup>. Any ocean is generally predicted to exist  $100\text{--}200 \text{ km}$  or more below the surface of Pluto, at the base of the icy shell<sup>16</sup>.

Typical surface temperatures on Pluto are  $\sim 35\text{--}60 \text{ K}$ <sup>17–20</sup>, with cooler temperatures for the brighter, volatile-rich surfaces. Pluto's atmospheric surface pressure in 2015 was  $\sim 10 \text{ }\mu\text{bar}$ <sup>21,22</sup>, and no liquid can exist on the surface of Pluto for long owing to this pressure being far below the triple point of the observed ice species ( $\text{N}_2$ ,  $\text{CO}$ ,  $\text{CH}_4$ ,  $\text{NH}_3$ ,  $\text{CH}_3\text{OH}$ , and  $\text{H}_2\text{O}$ )<sup>23,24</sup>. At these low temperatures pure water ice should generally form an immobile bedrock, as it is also far from its melting temperature of  $\sim 273 \text{ K}$ . The addition of ammonia or other anti-freeze components (e.g., salts) to the water ice can lower the melting temperature somewhat. The freezing temperature can be depressed by up to  $\sim 100 \text{ K}$  for high concentrations of ammonia at low pressure e.g.,<sup>25</sup>. Additional antifreeze components could potentially lower the melting temperatures even further<sup>26</sup>, but the surface temperatures on Pluto are so cold and the atmospheric pressure so low that freezing of a fluid on the surface would still occur on relatively short geologic timescales<sup>23</sup>. On Pluto's surface, nitrogen ice ( $\text{N}_2$ ) is much closer to its melting temperature ( $63 \text{ K}$ ) than water ice, and can flow or viscously relax over relatively short timescales<sup>27,28</sup>. Volatile ices ( $\text{N}_2$ ,  $\text{CO}$ ,  $\text{CH}_4$ ) also play a role in resurfacing areas of Pluto through sublimation, physical erosion, and/or deposition/mantling<sup>24,29–32</sup>.

Here we show that the potential icy volcanic (or cryovolcanic) constructs and their surrounding terrain discussed here (Fig. 1) have many morphological traits that are distinct from any other area on Pluto. These geologic features do not appear to be formed predominantly by erosion nor do they appear to be constructed primarily of volatile ices. Here we refer to cryovolcanism as the collection of processes that cause mobile subsurface material to extrude onto the surface and either partially or fully resurface the existing terrain. We propose a large volume of material has erupted from multiple sources (and likely in more than one episode over time) to form the many large domes and rises found in this region.

## Results

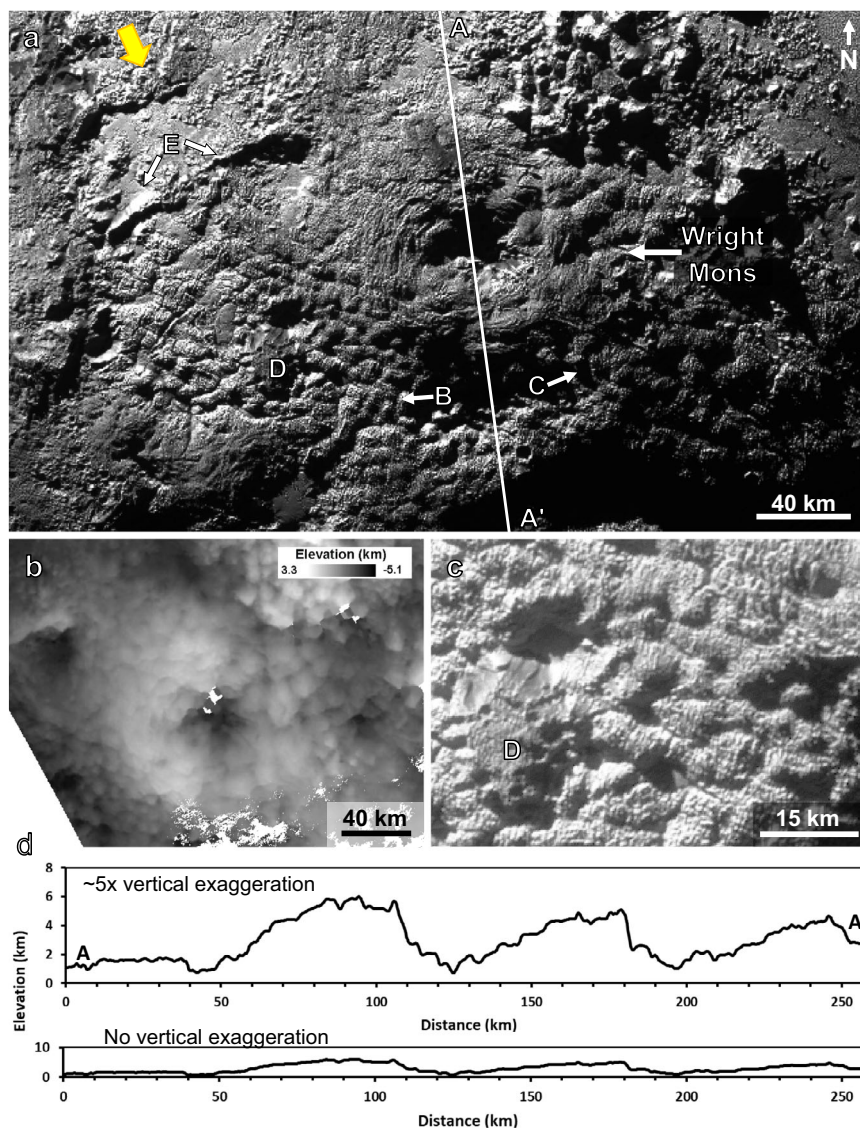
**Morphological characteristics.** The region of putative cryovolcanic terrains discussed here lies to the southwest of the Sputnik Planitia ice sheet (Supplementary Fig. 1), which fills an  $\sim 1000\text{-km}$ -diameter ancient impact basin<sup>2,33–36</sup>. The most prominent and largest-scale structures in the cryovolcanic region are large rises or mounds of material separated by broad depressions (Figs. 1–3 and Supplementary Fig. 1). The configuration of the large rises gives the impression of annular features with deep central depressions in two cases. These features are named Wright and Piccard Montes. However, further inspection suggests these features may or may not be annular, and instead may

simply have arisen from the merging of several adjacent rises (discussed below). The main topographic rise of Wright Mons (Fig. 1) stands  $\sim 4\text{--}5 \text{ km}$  high (relative to the lower areas of surrounding terrain) and spans  $\sim 150 \text{ km}$ , and Piccard Mons (Supplementary Fig. 2) is  $\sim 7 \text{ km}$  high at its tallest points and  $\sim 225 \text{ km}$  wide. The inferred volume of the main topographic rise of Wright Mons alone is  $\sim 2.4 \times 10^4 \text{ km}^3$  (similar to the volume of Mauna Loa, see Supplementary Note 8).

Wright Mons was imaged in sunlight but was also located near the terminator (transition from night to day) during New Horizons closest approach. Thus, the incoming sunlight is at a fairly low angle close to the surface ( $< 30^\circ$  elevation angle), and uni-directional (from the north-west) and this creates an effect where features perpendicular to the lighting direction (roughly NE-SW) are emphasized. Here we focus on features that can be verified with topographic data and can be seen in multiple image datasets with different lighting geometries. Piccard Mons had rotated past the terminator by the time New Horizons conducted its highest resolution imaging. Reflected light from high-altitude hazes in Pluto's atmosphere allowed for some higher-resolution imaging of Piccard Mons past the terminator (although at a lower signal-to-noise ratio than the sunlight regions)<sup>2,36</sup>. Other large rises lie between Wright and Piccard Montes (here referred to as the medial montes region), and seem to be connected to Wright and Piccard with no sharp transition in surface morphology, and, in some areas, no sharp transition in elevation (e.g., area labelled “B” and “C” in Fig. 1; also see Supplementary Fig. 3).

The flanks of Wright Mons and much of the surrounding terrain including the nearby large rises exhibit an undulatory/hummocky texture that varies in wavelength/scale from a few to  $\sim 20 \text{ km}$  across, with the most common widths between  $6\text{--}12 \text{ km}$  across (Fig. 1c, Supplementary Figs. 4–5). The hummocky terrain has either flat or gently rounded tops and is irregular in planform; most are interconnected on one or more sides and not individual mounds (although we still use the word hummocky here as a general reference to the type of texture). The lows between hummocks also vary, as some are narrow compared to the swells (with v-shaped profiles) and some are similar in width to the swells (more U-shaped profiles). The trough depths/hummock heights also vary and are typically between a few hundred meters and  $1 \text{ km}$  (Supplementary Figs. 4–5). Although the oblique lighting makes it appear as if the northern flank is smoother (not as hummocky), the topography shows that the hummocky terrain exists on all flanks of Wright Mons (Fig. 1b). The hummocky texture does not appear to have a preferential orientation (relative to the central depression or otherwise). On yet a smaller scale, boulders, blocks, slabs, or ridges with a horizontal scale of  $\sim 1\text{--}2 \text{ km}$  are superimposed on the hummocks (Fig. 1c). These smallest-scale features are only  $3\text{--}10$  pixels across thus are difficult to characterize.

The large-scale slopes across the broad flanks of Wright Mons are  $\sim 3\text{--}5^\circ$  (reaching  $10^\circ$  in some locations). The central depression of Wright Mons is  $\sim 40\text{--}50 \text{ km}$  across, and extends down to approximately the level of the surrounding terrain or slightly below (Fig. 1d), making it  $\sim 4 \text{ km}$  deep on average. The central depression of Piccard Mons is even larger in size and has a more rounded or “U-shaped” profile<sup>36</sup>. This central depression is dissimilar to calderas on terrestrial or martian volcanos, as it occupies about  $1/3$ rd of the overall width of the features, is very deep (i.e., its depth is equal to the height of Wright Mons) with a quasi-conical shape (i.e., it is not a smaller depression at the summit of a large shield, dome, or cone), and no traditional collapse terraces or similar structures are apparent (Supplementary Fig. 6d, e). The central depression walls are also lumpy in appearance, similar to the outer flanks, with typical large-scale slopes of  $\sim$ a-few-to- $10^\circ$  (up to  $\sim 20^\circ$  in a few locations). Topographic profiles show the northern flank of Wright, its



**Fig. 1** Features of Wright Mons and the surrounding terrain. **a** Wright Mons region with features labelled (see text), **b**, high-resolution topography for Wright Mons<sup>36</sup>, **c**, zoom of region with smaller dome named Coleman Mons (label “D”; also see Fig. 4), undulating, hummocky terrain on the flanks of Wright Mons and the superposed smaller-scale (1–2 km) ridges or boulders, **d**, topographic profile of Wright Mons and adjacent rise as shown by the line A to A’ in panel a. All images are from the new Horizons observation PEMV\_P\_MVIC\_LORRI\_CA (315 m px<sup>-1</sup>; see Supplementary Table 1) on a simple cylindrical projection. The large arrow in the upper left of panel a indicates the direction of incoming sunlight and is repeated in subsequent figures. All figures in the main text and supplement are shown with north up. The longitude and latitude extents of the image are as follows: panel a -163–182°E and -16–28°S; panel b -166–177°E and -17–24°S; panel c -167–171°E and -22–25°S.

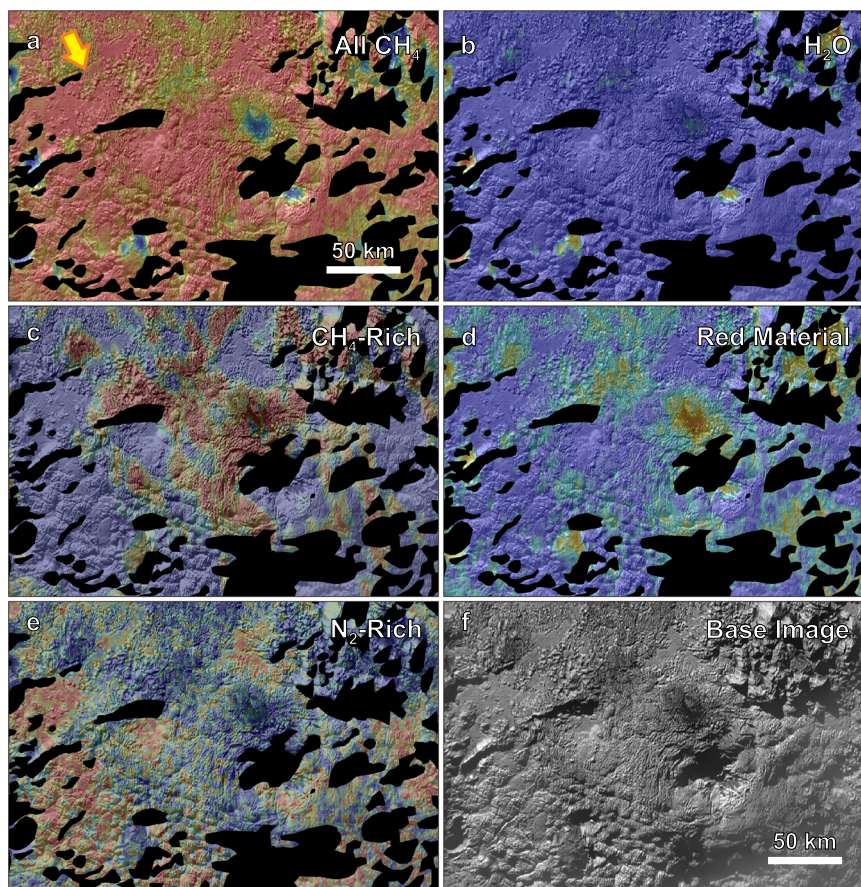
southern flank, and the adjacent swell of the medial montes region all have similar topographic profiles (Fig. 1d).

If the central depressions in Wright and Piccard Montes were formed entirely due to the collapse of the summits of formerly mound-shaped or conical edifices, this would represent the removal of >50% of the edifices’ volumes, a vast fraction. A comparison with shield volcanos on Earth and Mars (Supplementary Fig. 7) highlights how different the shape of the features on Pluto are and how atypical the central depression of Wright Mons would be if it were a collapse feature. A few other irregular depressions with steeper walls of various sizes (a few to 30 km across and a few hundred to a few km deep) are scattered throughout the terrain; most cavi do not appear to be impact craters because of their lack of both circularity and raised rims. Some of the depressions have sharp flat edges that may represent fault faces where collapse played a role in forming the depression, whereas others may be formed simply by the rise of material

around them. These could potentially represent vent sites, but there are no clear indications of the flow of material from them.

There are no obvious indicators of flow directionality or locations of effusive centers. Any distinct flow fronts, streamlines, levees, or fractures/vent locations that may have formed are not evident at the resolution of New Horizons images (the best images in this area range from 234–315 m px<sup>-1</sup>), or may have been degraded due to post-formation processes. However, there are some indications that multiple resurfacing events or emplacement episodes may have occurred (see methods). There are also no obvious indicators of explosive volcanism<sup>37</sup>, such as ballistic fall deposit patterns (either radial or directional), or steeper cones. The full extent of the resurfaced terrains is not known, as these terrains continue southward until they are no longer visible in the haze-light<sup>36</sup>. The scarcity of craters on Wright Mons indicates a relatively young age, with a previously determined upper limit of ~1–2 Ga<sup>38</sup>. Given uncertainties in the





**Fig. 2 Surface composition of the Wright Mons region.** Color-scale composition maps from ref. <sup>41</sup> derived from LEISA spectral data (see Supplementary Table 1) overlay on a greyscale panchromatic basemap. In all panels, redder colors indicate a greater absorption/band depth or a greater spectral index, indicating a stronger presence of the material. The range of values for each index is given in this caption. **a**, methane ( $\text{CH}_4$ ) band depth (with values from  $-0.08$  to  $0.43$ ) wherever this molecule appears (as  $\text{CH}_4$ -rich ice or in  $\text{N}_2$ -rich ice), **b**, water ice spectral index ( $\text{H}_2\text{O}$ ) (with values from  $-1.14$  to  $0.93$ ), **c**, areas where methane dominates over nitrogen ice ( $\text{CH}_4$ -rich only, found generally at higher elevations; with values of the ‘ $\text{CH}_4$  bands position index’ from 39 to 47; see ref. <sup>41</sup> their Fig. 22), **d**, an organic dark, red (in the visible) material index (with values from  $-1.94$  to  $-0.18$ ), **e**, areas where nitrogen ice ( $\text{N}_2$ ) dominates over methane (with values of the ‘ $\text{CH}_4$  bands position index’ from 42 to 32), and **f**, the panchromatic basemap alone. Please note that the shadowed regions have been excluded here because the low light levels make them difficult to accurately characterize with the LEISA data. The data is shown in a simple cylindrical map projection. The longitude and latitude extents of the image are  $-164$ – $179^\circ\text{E}$  and  $-16$ – $25^\circ\text{S}$ . The large arrow in the upper left indicates the approximate direction of the incoming light. Methane dominates much of the region but water ice (mixed with dark red material) is apparent on dark/low albedo patches, which are presumably warmer areas where methane ice is not stable.

impactor flux onto Pluto, and small number statistics, the crater retention age does not present a strong constraint, and many features in this area could be considerably younger.

**Compositional constraints.** Methane, nitrogen, and water ice are all observed to exist in high-volume, concentrated deposits on the surface of Pluto<sup>24</sup>. Thus, we consider whether these materials could make up the bulk of the cryovolcanic units that make up Wright and Piccard Mons and their surrounding terrains, based on both observations by New Horizons and what is known about the characteristics of the materials.

The Linear Etalon Imaging Spectral Array (LEISA) instrument on New Horizons<sup>39</sup> acquired infrared spectroscopic data informative of Pluto’s composition<sup>24,40,41</sup>. The volatile ices  $\text{N}_2$ ,  $\text{CO}$ , and  $\text{CH}_4$  form complex multi-phase systems as  $\text{N}_2$ -rich and  $\text{CH}_4$ -rich mixtures across much of the surface of Pluto (Fig. 2) because they sublime and redeposit following seasonal cycles (Pluto’s year is 248 Earth years) or the longer multi-million-year obliquity/precession cycles e.g.,<sup>24,42–45</sup>. In darker, low-albedo, warmer areas across Pluto, volatile ices do not deposit (or are not stable) and the spectral signatures of the non-volatile water ice

“bedrock” and a dark organic material can be observed instead (e.g., in the dark equatorial band on Pluto). This pattern can be seen in the Wright Mons region as well (Fig. 2). As the methane spectral signature becomes weaker on the few dark surface areas around Wright Mons, the water ice and red material signal becomes stronger (Fig. 2a–d). Methane-rich ice is also more prevalent at higher elevation (Fig. 2c). This indicates that the methane is likely a thin surface layer deposited out of the atmosphere<sup>46</sup>, and the bulk of Wright Mons and the other large topographic features in the area are not necessarily composed of methane. Additionally, the Wright Mons region exhibits a very different surface texture than that of the “bladed terrain” on Pluto (Supplementary Fig. 8), which is thought to form by condensation and sublimation of thick methane deposits<sup>46–48</sup>.

The spectral signature of nitrogen ice is also found across the Wright Mons region (Fig. 2e), appearing as both smaller, smooth, nitrogen-rich ice patches likely ponded in local lows, and also across the scene in a distribution similar to the thin methane deposits at lower elevation. However, as previously mentioned, larger volumes of nitrogen-rich ice cannot maintain tall topographic relief at Pluto’s surface conditions<sup>27,34</sup>.

Thus, for the remainder of the paper, we will explore ideas for forming the terrain in the Wright Mons region out of predominantly water ice, with the potential for other materials to be mixed in that may have aided in the deposition or further sculpting of the terrain over time. Ammonia or an ammoniated compound has been detected near extensional fractures ( $\sim 130^\circ\text{E}$ ,  $10^\circ\text{N}$ ) on Pluto where cryofluid eruption may have brought it to the surface in a thin deposit<sup>23,49</sup>. No clear signature of ammonia is observed in the region described here (Dalle Ore and Cruikshank personal communication), although it could be obscured by the methane signature. The dark material itself is mostly thought to be a class of materials called tholins<sup>24,33,50,51</sup>, which are disordered and insoluble carbon-rich macromolecular materials resulting from the energetic processing of hydrocarbons (e.g.,  $\text{CH}_4$ ) and other molecules containing nitrogen, carbon, and/or oxygen. The majority of the darker deposits in this region occur on north-facing slopes, which can be explained by insolation patterns<sup>46</sup>.

In addition to the spectral data, color observations (Fig. 3) from the New Horizons Multispectral and Visible Imaging Camera (MVIC) are helpful for distinguishing compositional differences across terrains<sup>39,51,52</sup>. The dark material on some north-facing slopes has a very strong red spectral slope (as seen in the brighter, redder areas of the enhanced color image in Fig. 3). There are also more subtle albedo and redness variations across the Wright Mons region. For example, much of Wright Mons has a slight red color, whereas the terrain just to its north is redder. The morphological transition from the Wright Mons region to the large plateau to the west (transition region labelled “A” in Fig. 3) is also reflected in a color transition (from redder to less red). Although it is difficult to determine age relationships corresponding to the variation in albedo or redness of terrains, the existence of albedo variation may be indicating these regions have been emplaced at different times, from varying source reservoirs, or from variations on the extrusion process.

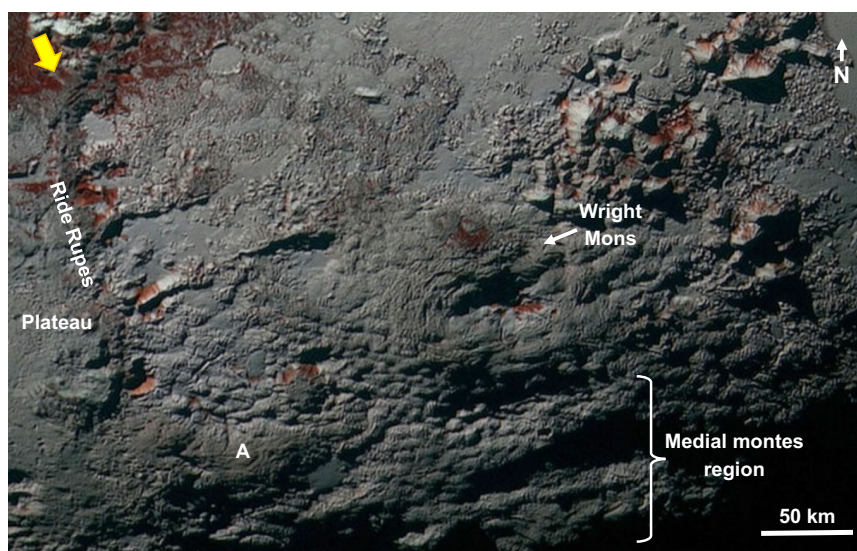
**Material emplacement hypotheses.** The constraints above suggest that these voluminous, potentially water-ice-rich structures were emplaced on the surface of Pluto in the later part of its

history. Our new analysis concurs with the previous discussion that the features are likely constructional<sup>2,3,36,53</sup> from the cryovolcanic emplacement of material on the surface, and are not erosional remnants or features formed purely from uplift from below. The three main lines of evidence that combine to suggest constructional features are: (1) this enormous area of resurfaced terrain has a paucity of craters (with no unambiguous examples), implying the formation event(s) reset the surface, (2) the hummocky morphology of this region is found on both the flanks and crests of rises as well as on lower, flatter terrain, and is dissimilar to the appearance of terrains scoured by glacial erosion or resurfaced by volatile sublimation-erosion found elsewhere on Pluto, and (3) these features lie well above their surrounding terrain in a variable pattern of highs and low, and thus cannot realistically be erosional remnants.

Given the spatially associated nature and morphological and topographical similarity of all of the large rises in the region, we put forward a new hypothesis: Wright Mons (and similarly for Piccard Mons) may be comprised of multiple, separate rises that have merged in some areas but not others, and that share the same formation mechanism as all of the other large rises and domes in the area. This is a departure from previous studies that considered Wright Mons more similar to single, coherent edifices with a central caldera and the other large rises as a separate kind of feature. This hypothesis is also consistent with the base of the central depression in Wright Mons sitting at a similar elevation as the surrounding terrain (although Piccard’s central depression is deeper than much of the surrounding terrain).

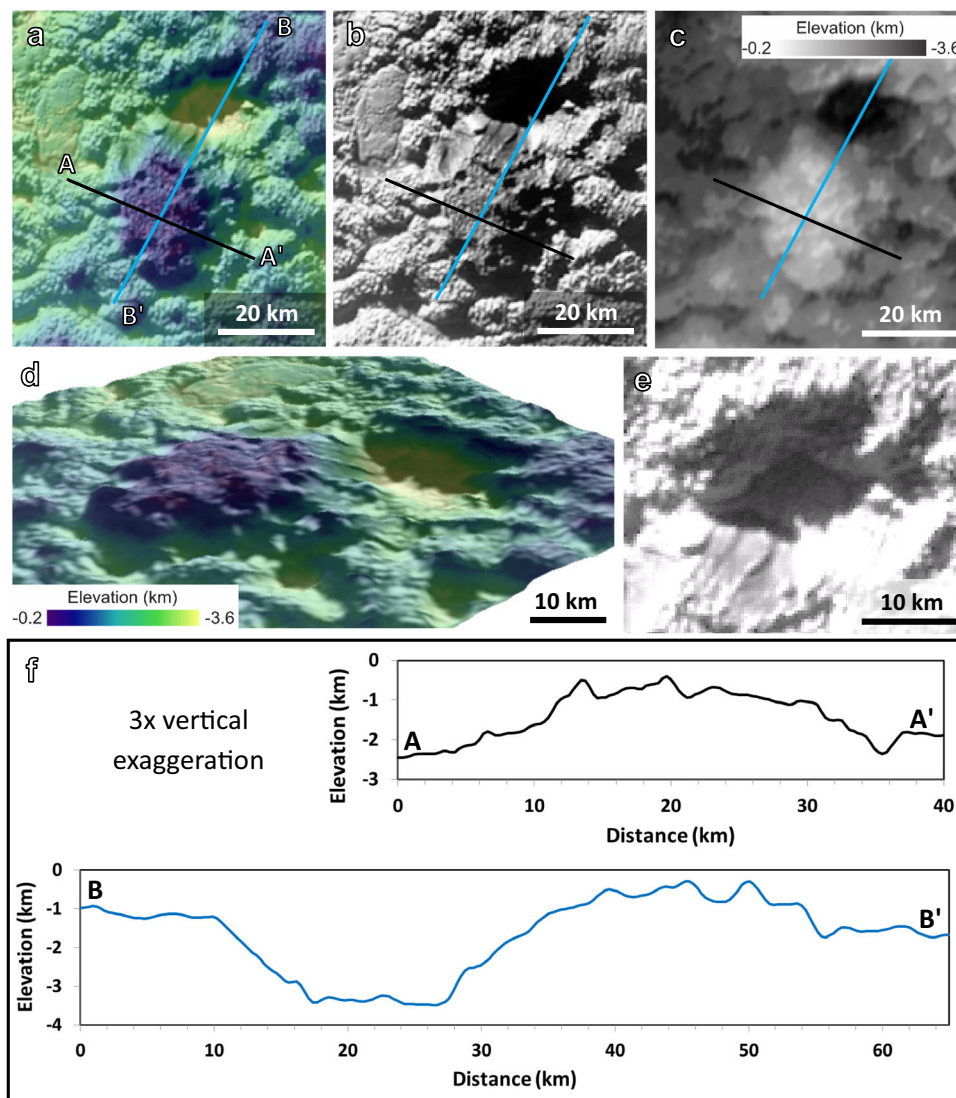
The smaller dome-like feature, Coleman Mons (labelled “D” in Fig. 1; Fig. 4), may represent an example of how the material is emplaced in this region. If this dome has a central, main source vent, then a dome of  $\sim 25$  km in diameter and  $\sim 1.5$  km high would imply a basal yield strength of  $\sim 6 \times 10^4$  Pa in the dome growth model of Bridges and Fink<sup>54</sup> (see methods). This yield strength value is consistent with some measures of ductile strength of mobile water or ammonia-water ice ( $\sim 10^4$ – $10^5$  Pa)<sup>55,56</sup>, which is to be expected if these features are formed of somewhat more mobile ice.

The hummocky/ropey nature of the flanks of Wright Mons and the surrounding terrain are suggestive of viscous flow



**Fig. 3 Color information for the Wright Mons region.** Darker/lower albedo, redder patches exist primarily on north-facing slopes but there are also more subtle differences in albedo and redness across the region. The region labelled “A” represents a redder unit transition to less red units at lower elevation (described in the text and methods). From the New Horizons observation PEMV\_P\_Color2 ( $\sim 660$  m  $\text{px}^{-1}$ ) shown in the original image geometry. The longitude and latitude extents of the image are  $\sim 160$ – $182^\circ\text{E}$  and  $\sim 13$ – $31^\circ\text{S}$ .





**Fig. 4** Smaller dome-like feature named Coleman mons. **a** Topography<sup>36</sup> overlain on base image of feature, **b**, base image alone, **c**, topography alone, **d**, perspective view of dome and pit with no vertical exaggeration, **e**, view inside the pit, **f**, topographic profiles as shown in panels a-c, with  $\times 3$  vertical exaggeration. All images from the New Horizons observation PEMV\_P\_MVIC\_LORRI\_CA (315 m px<sup>-1</sup>; see Supplementary Table 1), shown in a simple cylindrical projection. The location of this feature is indicated by the letter “D” in Fig. 1.

of either slushy or solid-state but still mobile material. We investigated three hypotheses to create the undulating/hummocky texture: (1) creation of individual small volcanic domes (first proposed in<sup>36</sup>), (2) viscous extrusion of rapidly cooled lavas analogous to pillow lavas, (3) compression of viscous material with a frozen skin analogous to pahoehoe, viscous pressure ridges, or funicular terrain on Enceladus<sup>57</sup>. We also consider the potential role of fractures in the area to control extrusion patterns or erosion.

For both the creation of individual domes or a process similar to pillow lava formation, subsurface source material would need to be extruded at a similar rate and for a similar duration across both the plains and the flanks/tops of the large rises to create similarly sized hummocks (for some details of potential cryomagma extrusion on other worlds see e.g.,<sup>58–61</sup>). Such uniform extrusion over such a diverse terrain seems unlikely. It is possible that the hummocky resurfacing occurred first, and was subsequently uplifted to form the large rises. This would imply an enormous volume of intrusion under the hummocky surface. If the hummocks are contractional features, a rough estimate of the thickness of the high-viscosity layer required to achieve a “folding

wavelength” similar to the hummocks in diameter is 8–13 km, which makes this mechanism unrealistic (see methods). Additionally, it is not clear what could cause compression.

Relatively large, deep fractures would presumably be needed to act as conduits for the ascent of subsurface mobile material in any of these scenarios (or a fracture network could also act as a mechanical filter to control hummock size/spacing). Although there are fractures across much of Pluto<sup>2,3,36</sup>, there are not many obvious large fractures in the Wright Mons region. The very large scarp (Ride Rupes; Fig. 3 and Supplementary Fig. 1) separating the Wright region from the plateau to the west, and one other scarp (Fig. 1, label “E”) are the only visible indications of possible deep fracturing in the Wright Mons region. The extrusive process may have covered other deep fractures.

## Discussion

The scenarios described above illustrate how canonical models of emplacement (derived primarily from terrestrial studies) may not be directly applicable to Pluto. The geologic features in the Wright Mons region are morphologically unlike any other

regions on Pluto and also have very few similarities to most terrains on other bodies in the solar system. The lack of indications of source vent regions or directionality of material movement makes it difficult to positively determine the mechanism of material emplacement on the surface. However, we found through detailed examination of all New Horizons imaging and composition data available for the Wright Mons region that the many, large, morphologically complex cryovolcanic constructs are consistent with formation from multiple subsurface sources where the sources are below the constructs. This scenario allows for a consistent formation mechanism for all of the large rises and depressions—where some are domical or annular and others are complex shapes—through the merging of different rises. It also avoids the need for an enormous amount of collapse to explain the giant depressions.

Given the low expected heat fluxes from Pluto's interior, and Pluto's cold surface temperatures (both topics discussed in the introduction), mobilizing material primarily made up of water ice is thermally challenging. However, the relative youth of the terrains implies that some heat must be available to emplace these features late in Pluto's history. Multiple, massive water-ice cryovolcanic constructs present new pieces of information towards understanding Pluto's thermal history, which complement other information from young areas on Pluto made up of volatile ices (e.g., Sputnik Planitia), and other small-volume features that have been proposed as effusions of ammonia water<sup>23,62</sup>. Perhaps the stratigraphic arrangement of the interior structure has stored internal heat generated from the rocky core that was later released (e.g., the clathrate layer proposed by ref. 14).

The range of cryovolcanic features found across the solar system is diverse. With the different conditions and surface materials present at Pluto, it is quite possible that any material movement onto the surface may not resemble that of other bodies. The extrusion of icy material onto the surface of a body with extremely low temperatures, low atmospheric pressure, low gravity, and the abundance of the volatile ices found on Pluto's surface make it unique among the visited places in the solar system.

## Methods

**Pluto topography from stereogrammetry.** Multiple stereo image pairs were available for the creation of several digital elevation models for the hemisphere of Pluto visible at encounter. These models were integrated into one final topography map product<sup>36</sup>. The New Horizons images and the final integrated topography map product is available from the Planetary Data Systems Small Bodies Node located at [https://pds-smallbodies.astro.umd.edu/data\\_sb/missions/newhorizons/index.shtml](https://pds-smallbodies.astro.umd.edu/data_sb/missions/newhorizons/index.shtml), with the topography map in the subdirectory [https://pds-smallbodies.astro.umd.edu/holdings/nh-p\\_psa-lorri\\_mvic-5-geophys-v1.0/data/dtm/](https://pds-smallbodies.astro.umd.edu/holdings/nh-p_psa-lorri_mvic-5-geophys-v1.0/data/dtm/). The production of this map is described in ref. 36, and we also provide some additional details here. Image registration and creation of stereo pairs was completed using United State Geologic Survey planetary image processing software (<https://doi.org/10.5281/zenodo.3962369>). To estimate a feature's height, its displacement or parallax is first determined using scene recognition. For this, a 3x3 pixel box size is used, thus the effective horizontal ground pixel scale of the resulting topography is ~3 times the pixel scale of the lowest resolution image in the stereo pair. The standard photogrammetric parallax equations<sup>63</sup> are then used to determine the distance to points on the body. Topography produced through stereogrammetry were also cross-checked with feature heights from shadow measurements where applicable and were found to be indistinguishable. The portion of the topographic map for Wright Mons and its surroundings was created with the following stereo pair: PELR\_P\_LEISA\_HIRES image sequence (240 m px<sup>-1</sup>) and PEMV\_P\_MVIC\_LORRI\_CA image scan (315 m px<sup>-1</sup>), with an effective horizontal resolution of 945 m px<sup>-1</sup> and vertical precision of ~90 m (see Supplementary Table 1 and also see Table 1 in ref. 36). For the wider area, an additional stereo pair filled in additional terrain: PEMV\_P\_MVIC\_LORRI\_CA image scan (315 m px<sup>-1</sup>) and PEMV\_P\_MPAN1 image scan (480 m px<sup>-1</sup>), with an effective horizontal resolution of 1440 m px<sup>-1</sup> and vertical precision of ~230 m. See Fig. 7 in ref. 36 and Supplementary Fig. 1 in ref. 64 for image sequence extents displayed on the Pluto base map.

**Possible evidence for multiple episodes of emplacement.** Several features of the Wright and Piccard region may point to the terrain being created in more than one event. We describe four features here. (1) Terrain to the north of Wright Mons (Supplementary Fig. 6a) has a somewhat similar small-scale texture (1–2 km boulders/ridges), although it lacks obvious mid-sized (~8–12 km) hummocks. This northern surrounding terrain is somewhat darker and overprinted by what appear to be a few small craters. (2) Lower elevation plains directly to the west of Wright Mons (Supplementary Fig. 6b, c) have a similar undulating/hummocky appearance to Wright Mons, but are also superposed by an intersecting fracture set. These fractures mostly appear fairly shallow (as if they do not cut all the way through the hummocks) but a few are deeper. These more modified terrains may represent an earlier episode of the process that created Wright Mons and the other large rises, that have subsequently been more cratered or tectonized. Additional there are several possible examples of superposed flows or episodes of terrain emplacement. (3) Coleman Mons (Fig. 4 and described in the next section) may represent an example of a separate emplacement event on the surface. And finally, (4) at the southern extent of Ride Rupes, the terrain between the Wright region and the large plateau farther to the west are connected by a gradual transition in elevation, albedo, color, and morphology (Fig. 3, labelled “A”, and Supplementary Fig. 6f): from hummocky to less hummocky to pitted moving east to west. Although there are no clear contacts, the higher elevation materials are somewhat darker and may superpose the lower elevation brighter units and may indicate these were separate emplacement events. Alternatively, the material may have been emplaced at the same time but later events more heavily modified the material at higher elevation.

**Dome model for Coleman Mons.** We work with the hypothesis that material may extrude from below Coleman Mons (Figs. 1c and 4), making this a small dome-like structure. The dome is made out of darker material and sits ~1 km above the tops of the surrounding hummocks. It is lumpy but not as clearly hummocky as some of the surrounding terrain. The darker material seems to cover parts of the surrounding hummocks (without disrupting them), and represents one of the few more distinct contacts in the area. Coleman Mons sits next to a depression (that reaches several km below the surface) but Coleman Mons is not obviously associated with the depression (Fig. 4e).

If this feature represents a smaller dome, it could be indicative of the mode of emplacement in the Wright Mons region. The rheology of the material being extruded can be related to the dome shape<sup>54</sup>. The dome is somewhat oblong in planform, with long and short axes of ~30 and 20 km, respectively. The hummocky nature of the terrain around the dome makes heights less straightforward to measure than in most terrestrial examples, but measurements range from 1 to 2.5 km around the dome. Using an average/typical diameter and height of 25 km and 1.5 km, respectively, gives an aspect ratio ( $A = \text{height}/\text{diameter}$ ) of ~0.06 (with a range of ~0.125 to 0.03 for the range of diameter and height measurements). The aspect ratio can be related to the dome geometry and material parameters through  $A \approx V^{-0.2} \tau_{\text{base}}^{0.6} \rho^{-0.6} g^{-0.6}$  e.g.,<sup>54,65</sup>, where  $V$  is the volume of a circular dome,  $\tau_{\text{base}}$  is the shear strength at the base of the expanding dome,  $\rho$  is the lava density (we used 920 kg m<sup>-3</sup> for this example, as a lower limit for cold, pure, water ice), and  $g$  is surface gravity (0.62 m s<sup>-2</sup> for Pluto). Because the basal shear stress during flow for these materials is not well known, we use the measured aspect ratio to estimate what shear stresses would match the observed dome geometry. Bridges and Fink<sup>54</sup> argue that the basal shear strength will be equal to the yield strength for low strain rates typical of growing domes (at least in terrestrial examples). For an intermediate aspect ratio of 0.06 for the dome on Pluto, the estimated basal shear stress or yield stress is  $6.4 \times 10^4$  Pa, with a range of  $2.4 \times 10^4$  to  $2.1 \times 10^5$  Pa for the extreme range of aspect ratios. A similar equation for a dome with a roughly parabolic cross-section (although this dome is somewhat more flat-topped) produces a similar estimate of basal Bingham yield stress,  $5.1 \times 10^4$  Pa for the average dome dimensions<sup>66</sup>.

Relevant laboratory measurements of Bingham yield strength for pure water ice are not, to our knowledge, available. Measurements for ductile strength of both water ice and ammonia-water ice slurries under a confining pressure of 50 MPa (higher than expected for the features on Pluto's surface) are in the range of  $10^4$ – $10^5$  Pa at temperatures where the ice is still mobile (~140–170 K for ammonia water ice)<sup>55,56</sup>. These are not the same conditions as on Pluto's surface, but the ice would presumably still need to be at temperatures where it was mobile in the interior of the flows. The yield strengths calculated for Coleman Mons are also in the range of estimated values for terrestrial and lunar values basaltic and rhyolitic values ( $10^3$ – $10^5$  Pa)<sup>54</sup>.

Several ~3–19-km-diameter domes on Europa have been modeled as cryovolcanic emplacements<sup>58,60,67</sup>, however, they are considerably less tall features (30–100 m) than Coleman Mons or the other large rises in this area of Pluto. The Europa examples also have somewhat smoother surfaces to the extruded material (although some also have rafted ice blocks) and more regular dome-like shapes. Although the temperatures and surface gravity ( $g$ ) on Europa are not as low as on Pluto (Europa: 100 K for the aforementioned models and  $g = 1.315$  m s<sup>-2</sup>; Pluto: average 40 K and  $g = 0.62$  m s<sup>-2</sup>), more complex volcanic extrusion or dome formation modeling such as investigating possible ascent mechanisms, cooling rates, or dome relaxation<sup>58,60,68</sup> may be fruitful avenues of future research.



**Funiscular terrain analogy.** The hummocky terrain and the smaller scale boulders and/or ridges superimposed on them bear some resemblance to areas of the funiscular terrain found between the tiger stripes of Enceladus (Supplementary Fig. 9)<sup>69</sup>, although funiscular terrain is often more linear and has a smaller width (closer to 1 km in wavelength) and amplitude (~0.5 to 1 km height). A leading hypothesis for forming funiscular terrain is through contractional folding of a thin frozen “lithosphere” overlying more viscous material,<sup>57,70</sup> akin to formation of pahoehoe textures on Earth. In this case the tiger stripes are in extension resulting in compression between them. On Enceladus, high heat flows and a warm effective surface temperature are needed in the modelled conditions to keep the surface layer thin enough to produce the observed features<sup>57</sup>. Bland, McKinnon<sup>57</sup> suggested the effective surface temperature between the stripes could be higher (possibly 70 K to 186 K) than the measured temperatures of the optical surface (55 K) due to insulation from fractures, porosity, and fallback of fine-grained plume material.

The surface temperatures expected for Pluto are on average ~40 K (described in the main text). Following the folding model of Fink<sup>71</sup>, also described in Barr and Preuss<sup>70</sup>, the thickness of a high viscosity layer ( $H$ ) needed to create a given dominant folding wavelength ( $L_D$ ), is given by  $H \approx (L_D/28)^* \ln(R)$ , and  $\ln(R) \approx (Q^* \Delta T / R_G T_i^2)$ . The variables in  $\ln(R)$  are as follows:  $Q^*$  is the rheological activation energy,  $\Delta T = (T_i - T_s)$  or the interior temperature minus the surface temperature, and  $R_G$  is the gas constant ( $8.314 \text{ J mol}^{-1} \text{ K}^{-1}$ ). We use  $Q^* = 60 \text{ kJ mol}^{-1}$  for ductile water-ice<sup>72</sup>,  $L_D = 10 \text{ km}$  as the average wavelength of the hummocky terrain, and vary the internal temperature ( $T_i$ ) from 150 to 273 K as a wide range of possible temperatures for materials ranging from mobile ice with large amounts of antifreeze to liquid water. This yields a thickness range for the high viscosity upper folding layer of  $H \sim 8\text{--}13 \text{ km}$ , which is unrealistically large for the scale of the features.

Additionally, for Wright (or Piccard) Mons on Pluto, the lack of distinct flow fronts or source regions means that it is not clear what could cause compression to create a folded surface. If the material flowed downhill while continually freezing at the flow front, gravity and pressure from continually erupted material could serve that role. However, the hummocky terrain also occurs on flatter areas. It is additionally not clear if large volumes of material are erupted at a given time, in order to create long flows with a relatively consistent wavelength.

## Data availability

All New Horizons image and topographic data used in this study are publicly available in NASA’s Planetary Data System archive (Small Bodies Node: <https://pds-smallbodies.astro.umd.edu/>).

Received: 23 June 2021; Accepted: 9 February 2022;

Published online: 29 March 2022

## References

- Stern, S. A., Grundy, W. M., McKinnon, W. B., Weaver, H. A. & Young, L. A. The Pluto System After New Horizons. *Annu. Rev. Astron. Astrophys.* **56**, 357–392 (2018).
- Moore, J. M. et al. The geology of Pluto and Charon through the eyes of New Horizons. *Science* **351**, 1284–1293 (2016).
- White, O. L. et al. The Geology of Pluto. In: Stern, S. A., Young, L. A., Moore, J. M., Grundy, W. M., Binzel, R. P. (eds). *The Pluto System*. (University of Arizona Press: Tucson, 2021).
- Nimmo, F. et al. Mean radius and shape of Pluto and Charon from New Horizons images. *Icarus* **287**, 12–29 (2017).
- McKinnon, W. B. et al. Origin of the Pluto-Charon system: Constraints from the New Horizons flyby. *Icarus* **287**, 2–11 (2017).
- McKinnon, W. B., Glein, C. R., Bertrand, T. & Rhoden, A. R. Formation, Composition, and History of the Pluto System: A Post-New-Horizons Synthesis. In: Stern, S. A., Young, L. A., Moore, J. M., Grundy, W. M., Binzel, R. P. (eds). *The Pluto System*. (University of Arizona Press: Tucson, 2021).
- McKinnon, W. B., Simonelli, D. P., Schubert, G. & Tholen, D. J. Composition, Internal Structure, and Thermal Evolution of Pluto and Charon. In: Stern, S. A. (ed.). *Pluto and Charon*, 1997, p 295.
- Robuchon, G. & Nimmo, F. Thermal evolution of Pluto and implications for surface tectonics and a subsurface ocean. *Icarus* **216**, 426–439 (2011).
- Canup, R. M. On a Giant Impact Origin of Charon, Nix, and Hydra. *Astronomical J.* **141**, 35 (2011).
- Canup, R. M., Kratter, K. M. & Neveu, M. On the Origin of the Pluto System. In: Stern, S. A., Young, L. A., Moore, J. M., Grundy, W. M., Binzel, R. P. (eds). *The Pluto System*. (University of Arizona Press: Tucson, 2021).
- Cheng, W. H., Lee, M. H. & Peale, S. J. Complete tidal evolution of Pluto-Charon. *Icarus* **233**, 242–258 (2014).
- Bierson, C. J., Nimmo, F. & McKinnon, W. B. Implications of the observed Pluto-Charon density contrast. *Icarus* **309**, 207 (2018).
- Bierson, C. J., Nimmo, F. & Stern, S. A. Evidence for a hot start and early ocean formation on Pluto. *Nat. Geosci.* **13**, 468–472 (2020).
- Kamata, S. et al. Pluto’s ocean is capped and insulated by gas hydrates. *Nat. Geosci.* **12**, 407 (2019).
- Kimura, J. & Kamata, S. Stability of the subsurface ocean of Pluto. *Planet. Space Sci.* **181**, 104828 (2020).
- Nimmo, F., McKinnon, W. B. Geodynamics of Pluto. In: Stern, S. A., Young, L. A., Moore, J. M., Grundy, W. M., Binzel, R. P. (eds). *The Pluto System*. (University of Arizona Press: Tucson, 2021).
- Young, L. A. et al. Volatile and Climate Cycles on Short and Long Timescales. In: Stern, S. A., Young, L. A., Moore, J. M., Grundy, W. M., Binzel, R. P. (eds). *The Pluto System*. (University of Arizona Press: Tucson, 2021).
- Stern, S. A., Weintraub, D. A. & Festou, M. C. Evidence for a Low Surface Temperature on Pluto from Millimeter-Wave Thermal Emission Measurements. *Science* **261**, 1713 (1993).
- Bird, M. K. et al. Radio thermal emission from Pluto and Charon during the New Horizons encounter. *Icarus* **322**, 192–209 (2019).
- Forget, F. et al. A post-New Horizons global climate model of Pluto including the N<sub>2</sub>, CH<sub>4</sub> and CO cycles. *Icarus* **287**, 54–71 (2017).
- Gladstone, G. R. et al. The atmosphere of Pluto as observed by New Horizons. *Science* **351**, aad8866 (2016).
- Hinson, D. P. et al. Radio occultation measurements of Pluto’s neutral atmosphere with New Horizons. *Icarus* **290**, 96–111 (2017).
- Cruikshank, D. P. et al. Recent cryovolcanism in Virgil Fossae on Pluto. *Icarus* **330**, 155–168 (2019).
- Grundy, W. M. et al. Surface compositions across Pluto and Charon. *Science* **351**, aad9189 (2016).
- Johnson, M. L. & Nicol, M. The ammonia-water phase diagram and its implications for icy satellites. *J. Geophys. Res.* **92**, 6339 (1987).
- Kargel, J. S. Physical Chemistry of Ices in the Outer Solar System. **227**, 1998, p 3.
- Stern, S. A., Porter, S. & Zangari, A. On the roles of escape erosion and the viscous relaxation of craters on Pluto. *Icarus* **250**, 287–293 (2015).
- Umurhan, O. M. et al. Modeling glacial flow on and onto Pluto’s Sputnik Planitia. *Icarus* **287**, 301–319 (2017).
- Moore, J. M. et al. Sublimation as a landform-shaping process on Pluto. *Icarus* **287**, 320–333 (2017).
- Howard, A. D. et al. Present and past glaciation on Pluto. *Icarus* **287**, 287–300 (2017).
- Howard, A. D. et al. Pluto: Pits and mantles on uplands north and east of Sputnik Planitia. *Icarus* **293**, 218–230 (2017).
- White, O. L. et al. Washboard and fluted terrains on Pluto as evidence for ancient glaciation. *Nat. Astron.* **3**, 62–68 (2019).
- Stern, S. A. et al. The Pluto system: Initial results from its exploration by New Horizons. *Science* **350**, id.aad1815 (2015).
- McKinnon, W. B. et al. Convection in a volatile nitrogen-ice-rich layer drives Pluto’s geological vigour. *Nature* **534**, 82–85 (2016).
- Johnson, B. C., Bowling, T. J., Trowbridge, A. J. & Freed, A. M. Formation of the Sputnik Planum basin and the thickness of Pluto’s subsurface ocean. *Geophys. Res. Lett.* **43**, 10 (2016).
- Schenk, P. M. et al. Basins, fractures and volcanoes: Global cartography and topography of Pluto from New Horizons. *Icarus* **314**, 400–433 (2018).
- Neveu, M., Desch, S. J., Shock, E. L. & Glein, C. R. Prerequisites for explosive cryovolcanism on dwarf planet-class Kuiper belt objects. *Icarus* **246**, 48–64 (2015).
- Singer, K. N., Greenstreet, S., Schenk, P. M., Robbins, S. J. & Bray, V. J. Pluto and Charon Craters and Terrain Age Estimates. In: Stern, S. A., Young, L. A., Moore, J. M., Grundy, W. M., Binzel, R. P. (eds). *The Pluto System*. (University of Arizona Press: Tucson, 2021).
- Reuter, D. C. et al. Ralph: A Visible/Infrared Imager for the New Horizons Pluto/Kuiper Belt Mission. *Space Sci. Rev.* **140**, 129–154 (2008).
- Protopapa, S. et al. Pluto’s global surface composition through pixel-by-pixel Hapke modeling of New Horizons Ralph/LEISA data. *Icarus* **287**, 218–228 (2017).
- Schmitt, B. et al. Physical state and distribution of materials at the surface of Pluto from New Horizons LEISA imaging spectrometer. *Icarus* **287**, 229–260 (2017).
- Earle, A. M. & Binzel, R. P. Pluto’s insolation history: Latitudinal variations and effects on atmospheric pressure. *Icarus* **250**, 405–412 (2015).
- Bertrand, T. & Forget, F. Observed glacier and volatile distribution on Pluto from atmosphere-topography processes. *Nature* **540**, 86–89 (2016).
- Bertrand, T. et al. The nitrogen cycles on Pluto over seasonal and astronomical timescales. *Icarus* **309**, 277–296 (2018).
- Bertrand, T. et al. The CH<sub>4</sub> cycles on Pluto over seasonal and astronomical timescales. *Icarus* **329**, 148–165 (2019).
- Bertrand, T., Forget, F., Schmitt, B., White, O. L. & Grundy, W. M. Equatorial mountains on Pluto are covered by methane frosts resulting from a unique atmospheric process. *Nat. Commun.* **11**, 5056 (2020).

47. Moore, J. M. et al. Bladed Terrain on Pluto: Possible origins and evolution. *Icarus* **300**, 129–144 (2018).
48. Moores, J. E., Smith, C. L., Toigo, A. D. & Guzewich, S. D. Penitentes as the origin of the bladed terrain of Tartarus Dorsa on Pluto. *Nature* **541**, 188–190 (2017).
49. Dalle Ore, C. M. et al. Detection of ammonia on Pluto's surface in a region of geologically recent tectonism. *Sci. Adv.* **5**, eaav5731 (2019).
50. Grundy, W. M. et al. Pluto's haze as a surface material. *Icarus* **314**, 232–245 (2018).
51. Protopapa, S. et al. Disk-resolved Photometric Properties of Pluto and the Coloring Materials across its Surface. *Astronomical J.* **159**, 74 (2020).
52. Olkin, C. B. et al. The Global Color of Pluto from New Horizons. *Astronomical J.* **154**, 258 (2017).
53. Ahrens, C. J. Modeling cryogenic mud volcanism on Pluto. *J. Volcanol. Geotherm. Res.* **406**, 107070 (2020).
54. Bridges, N. T. & Fink, J. H. Aspect Ratios of Lava Domes on the Earth, Moon and Venus. 1992. p. 159.
55. Durham, W. B., Kirby, S. H. & Stern, L. A. Flow of ices in the ammonia-water system. *J. Geophys. Res.* **98**, 17667 (1993).
56. Schulson, E., & Duval, P. *Creep and Fracture of Ice*. (Cambridge University Press: Cambridge, 2009).
57. Bland, M. T., McKinnon, W. B. & Schenk, P. M. Constraining the heat flux between Enceladus' tiger stripes: Numerical modeling of funiscular plains formation. *Icarus* **260**, 232 (2015).
58. Quick, L. C., Glaze, L. S. & Baloga, S. M. Cryovolcanic emplacement of domes on Europa. *Icarus* **284**, 477–488 (2017).
59. Quick, L. C. et al. A Possible Brine Reservoir Beneath Occator Crater: Thermal and Compositional Evolution and Formation of the Cerealia Dome and Vinalia Faculae. *Icarus* **320**, 119 (2019).
60. Fagents, S. A. Considerations for effusive cryovolcanism on Europa: The post-Galileo perspective. *J. Geophys. Res. (Planets)* **108**, 5139 (2003).
61. Ruesch, O. et al. Cryovolcanism on Ceres. *Science* **353**, aaf4286 (2016).
62. Cruikshank, D. P. et al. Cryovolcanic flooding in Viking Terra on Pluto. *Icarus* **356**, 113786 (2021).
63. Lee, G. Y. G. & McGlone, J. C. *Manual of Photogrammetry*, 6th edn. (American Society for Photogrammetry and Remote Sensing: Bethesda, MD, 2013).
64. Singer, K. N. et al. Impact Craters on Pluto and Charon Indicate a Deficit of Small Kuiper Belt Objects. *Science* **363**, 955–959 (2019).
65. Fink, J. H., Bridges, N. T. & Grimm, R. E. Shapes of Venusian “pancake” domes imply episodic emplacement and silicic composition. *Geophys. Res. Lett.* **20**, 261 (1993).
66. Melosh, H. J. *Planetary Surface Processes*. (Cambridge University Press, Cambridge, 2011).
67. Pappalardo, R. T. et al. Does Europa have a subsurface ocean? Evaluation of the geological evidence. *J. Geophys. Res.* **104**, 24015 (1999).
68. Allison, M. L. & Clifford, S. M. Ice-covered water volcanism on Ganymede. *J. Geophys. Res.* **92**, 7865 (1987).
69. Spencer, J. R. et al. Enceladus: An Active Cryovolcanic Satellite. *Saturn from Cassini-Huygens*, 2009, p 683.
70. Barr, A. C. & Preuss, L. J. On the origin of south polar folds on Enceladus. *Icarus* **208**, 499 (2010).
71. Fink, J. Surface folding and viscosity of rhyolite flows. *Geology* **8**, 250 (1980).
72. Durham, W. B. & Stern, L. A. Rheological Properties of Water Ice-Applications to Satellites of the Outer Planets. *Annu. Rev. Earth Planet. Sci.* **29**, 295–330 (2001).

## Acknowledgements

We thank NASA's New Horizons mission for funding (grant numbers NASW-02008 and NAS5-97271/TaskOrder30), and the New Horizons team for their hard work leading to a successful Pluto system flyby and subsequent return of the data. KNS additionally thanks Dr. Michael Bland for helpful discussions. BS acknowledges the Centre National d'Etudes Spatiales (CNES) for its financial support through its “Système Solaire” program. A portion of this research was carried out at the Jet Propulsion Laboratory, California Institute of Technology, under a contract with the National Aeronautics and Space Administration (80NM0018D0004).

## Author contributions

K.N.S. conducted the research, and wrote most of the paper. O.L.W. contributed ideas throughout the paper and to the writing. B.S. provided data in Fig. 2 and discussed implications and contributed to the writing. E.L.R. contributed ideas and to the model calculations. S.P., W.M.G., D.C., T.B., P.M.S., W.B.M., S.A.S., R.D., K.D.R., R.A.B., and V.J.B. contributed ideas and to the writing. C.D.O., J.R.S., J.M.M., F.N., and J.T.K. discussed the results and contributed ideas. L.A.Y., C.A.B., T.R.L., H.A.W., and K.S.E. contributed to the planning and successful data collection and analysis of the New Horizons mission that made these results possible.

## Competing interests

The authors declare no competing interests.

## Additional information

**Supplementary information** The online version contains supplementary material available at <https://doi.org/10.1038/s41467-022-29056-3>.

**Correspondence** and requests for materials should be addressed to Kelsi N. Singer.

**Peer review information** *Nature Communications* thanks Caitlin Ahrens, Kate Craft and the anonymous reviewer(s) for their contribution to the peer review of this work.

**Reprints and permission information** is available at <http://www.nature.com/reprints>

**Publisher's note** Springer Nature remains neutral with regard to jurisdictional claims in published maps and institutional affiliations.



**Open Access** This article is licensed under a Creative Commons Attribution 4.0 International License, which permits use, sharing, adaptation, distribution and reproduction in any medium or format, as long as you give appropriate credit to the original author(s) and the source, provide a link to the Creative Commons license, and indicate if changes were made. The images or other third party material in this article are included in the article's Creative Commons license, unless indicated otherwise in a credit line to the material. If material is not included in the article's Creative Commons license and your intended use is not permitted by statutory regulation or exceeds the permitted use, you will need to obtain permission directly from the copyright holder. To view a copy of this license, visit <http://creativecommons.org/licenses/by/4.0/>.

© The Author(s) 2022