



**HAL**  
open science

## Role of the fatty pancreatic infiltration in pancreatic oncogenesis

Sonia Frendi, Chloé Martineau, Hélène Cazier, Rémy Nicolle, Anaïs Chassac, Miguel Albuquerque, Jérôme Raffenne, Julie Le Faouder, Valérie Paradis, Jérôme Cros, et al.

### ► To cite this version:

Sonia Frendi, Chloé Martineau, Hélène Cazier, Rémy Nicolle, Anaïs Chassac, et al.. Role of the fatty pancreatic infiltration in pancreatic oncogenesis. *Scientific Reports*, 2024, 14 (1), pp.6582. 10.1038/s41598-024-57294-6 . hal-04584546

**HAL Id: hal-04584546**

**<https://u-paris.hal.science/hal-04584546v1>**

Submitted on 23 May 2024

**HAL** is a multi-disciplinary open access archive for the deposit and dissemination of scientific research documents, whether they are published or not. The documents may come from teaching and research institutions in France or abroad, or from public or private research centers.

L'archive ouverte pluridisciplinaire **HAL**, est destinée au dépôt et à la diffusion de documents scientifiques de niveau recherche, publiés ou non, émanant des établissements d'enseignement et de recherche français ou étrangers, des laboratoires publics ou privés.



Distributed under a Creative Commons Attribution 4.0 International License



## OPEN Role of the fatty pancreatic infiltration in pancreatic oncogenesis

Sonia Frendi<sup>1</sup>, Chloé Martineau<sup>2</sup>, Hélène Cazier<sup>1</sup>, Rémy Nicolle<sup>3</sup>, Anaïs Chassac<sup>4</sup>, Miguel Albuquerque<sup>1,5</sup>, Jérôme Raffenne<sup>6</sup>, Julie Le Faouder<sup>1</sup>, Valérie Paradis<sup>1,5</sup>, Jérôme Cros<sup>1,5</sup>, Anne Couvelard<sup>1,4</sup> & Vinciane Rebours<sup>1,2</sup>✉

Although pancreatic precancerous lesions are known to be related to obesity and fatty pancreatic infiltration, the mechanisms remain unclear. We assessed the role of fatty infiltration in the process of pancreatic oncogenesis and obesity. A combined transcriptomic, lipidomic and pathological approach was used to explore neoplastic transformations. Intralobular (ILF) and extralobular (ELF) lipidomic profiles were analyzed to search for lipids associated with pancreatic intraepithelial neoplasia (PanINs) and obesity; the effect of ILF and ELF on acinar tissue and the histopathological aspects of pancreatic parenchyma changes in obese (OB) and non-obese patients. This study showed that the lipid composition of ILF was different from that of ELF. ILF was related to obesity and ELF-specific lipids were correlated to PanINs. Acinar cells were shown to have different phenotypes depending on the presence and proximity to ILF in OB patients. Several lipid metabolic pathways, oxidative stress and inflammatory pathways were upregulated in acinar tissue during ILF infiltration in OB patients. Early acinar transformations, called acinar nodules (AN) were linked to obesity but not ELF or ILF suggesting that they are the first reversible precancerous pancreatic lesions to occur in OB patients. On the other hand, the number of PanINs was higher in OB patients and was positively correlated to ILF and ELF scores as well as to fibrosis. Our study suggests that two types of fat infiltration must be distinguished, ELF and ILF. ILF plays a major role in acinar modifications and the development of precancerous lesions associated with obesity, while ELF may play a role in the progression of PDAC.

**Keywords** Obesity, Intra-lobular and extra-lobular fatty pancreatic infiltration, Pancreatic precancerous lesions, Lipidomic MALDI-TOF imaging mass spectrometry, Pancreatic oncogenesis

### Abbreviations

|         |  |
|---------|--|
| Ac/ILF- | Acinar tissue without ILF infiltration                       |
| Ac/ILF+ | Acinar tissue next to ILF infiltration                       |
| ADM     | Acinar-to-ductal metaplasia                                  |
| AN      | Acinar nodule  |
| BCL10   | B-cell lymphoma 10   |
| BMI     | Body mass index  |
| CD163   | Cluster of differentiation 163                               |
| CD8     | Cluster of differentiation 8                                 |
| CK7     | Cytokeratin 7  |
| DHB     | 2,5-Dihydroxybenzoic acid                                    |
| ELF     | Extralobular fat   |
| FFPE    | Formalin-fixed paraffin-embedded                             |
| FT-ICR  | Fourier transform ion cyclotron resonance mass spectrometry; |
| GSEA    | Gene set enrichment analysis                                 |

<sup>1</sup>Inflammation Research Center (CRI), INSERM, U1149, Paris-Cité University, 75018 Paris, France. <sup>2</sup>Pancreatology and digestive oncology Department – DMU Digest, Beaujon Hospital, AP-HP, Paris-Cité University, 100 Boulevard du Général Leclerc, 92110 Clichy, France. <sup>3</sup>INSERM U1149, CNRS ERL 8252, Inflammation Research Center (CRI), Paris-Cité University, 75018 Paris, France. <sup>4</sup>Pathology Department, Bichat Hospital, AP-HP, Paris-Cité University, Paris, France. <sup>5</sup>Pathology Department, FHU MOSAIC, AP-HP, Beaujon Hospital, Clichy, France. <sup>6</sup>JR-Analytics (JR-Analytics.Fr), 33370 Pompignac, France. ✉email: vinciane.rebours@aphp.fr

|           |   |
|-----------|---|
| GSVA      | Gene Set Variation Analysis   |
| H&E       | Hematoxylin and eosin staining  |
| HES       | Hematoxylin–eosin–safran–stained                                      |
| IC        | Independent component   |
| IHC       | Immunohistochemistry  |
| ILF       | Intralobular fat  |
| IPMN      | Intraductal papillary mucinous neoplasia                              |
| LMSD      | LIPID MAPS® Structure Database  |
| MALDI-MSI | Matrix-assisted laser desorption/ionization mass spectrometry imaging |
| PanIN     | Pancreatic intra epithelial neoplasia                                 |
| PBS       | Phosphate buffered saline   |
| PC        | Phosphocholine  |
| PCA       | Principal component analysis  |
| PDAC      | Pancreatic adenocarcinoma   |
| PE        | Phosphoethanolamin;   |
| PE-Cer    | Ceramide phosphoethanolamin;  |
| RNA-seq   | RNA sequencing  |
| ROI       | Region of interest  |
| SM        | Sphingomyelin   |
| Sox9      | SRY-Box transcription factor 9  |
| TG        | Triglyceride  |
| αSMA      | Alpha smooth muscle actine  |

Pancreatic adenocarcinomas (PDAC) are the fourth cause of cancer mortality in most developed countries<sup>1</sup>. Because of the lack of effective therapies, the 5-year survival rate is still < 9%<sup>2</sup>. The causes of the PDAC pandemic are still not well understood, even if certain constitutional and environmental risk factors have been identified, such as a family history and genetic factors, age, tobacco, chronic pancreatitis, diabetes mellitus, dietary factors and obesity<sup>2,3</sup>.

The prevalence of overweight and obese populations has markedly increased in western countries and has reached pandemic levels, affecting 60–70% of adults. In the past few decades its prevalence has increased by 27% and 47% in the adult and child population, respectively<sup>4</sup>. Obesity is associated with numerous co-morbidities such as diabetes, arterial hypertension and hyperlipidemia (all part of the metabolic syndrome) and an increased risk of cancer, in particular PDAC. In epidemiological studies, the risk ratio of PDAC per 5 kg/m<sup>2</sup> increase in BMI was 1.07 [0.93–1.23] in men and 1.12 [1.03–1.23] in women<sup>5</sup>.

The physiopathology of obesity and pancreatic cancer is still poorly understood, although some studies have shown the specific roles of subcutaneous, intravisceral fat and pancreatic fat infiltration. In one study using mass spectrometry analyses in patients operated for colorectal cancer, Liesenfeld et al. showed that the distribution of lipids between subcutaneous and visceral fat could be different and that visceral adipose tissue displayed higher levels of inflammatory lipid metabolism markers, such as free arachidonic acid, phospholipases and enzymes involved in prostaglandin synthesis. They also identified lipids in the adipose tissues associated with the tumor<sup>6</sup>.

Obesity and increased intravisceral fat mass induce fatty infiltration in numerous organs including the pancreas. This adipose infiltration includes triglycerides and free fatty acids which play a role in fibrogenesis via sequences of necrosis- as well as direct activation of pro-inflammatory pathways. This pro-inflammatory environment plays a role in the initiation of precancerous pancreatic lesions<sup>7,8</sup>.

The cellular changes that precede the onset of PDAC have not been clearly described. Pancreatic intraepithelial neoplasia (PanIN) is the most commonly described precancerous lesion in PDAC and various studies have shown their acinar origin. A study by Guerra C. et al. based on an inducible KrasG12V mice model showed that acinar or centro-acinar cells could be the origin of PanINs and PDAC by differentiation into ductal-like cells during inflammation<sup>9</sup>. In addition, Kopp JL. et al. showed that PDAC precursor lesions are generated from adult acinar cells by differentiation into ductal-like cells and not from ductal or centro-acinar cells<sup>10</sup>, called acinar-to-ductal metaplasia (ADM). This process is one of the key steps promoting the development of PanINs<sup>11</sup>. Other morphological changes in acinar cells, called acinar nodules (AN), have been described, corresponding to an intermediate state with co-expression of ductal and acinar markers. The relationship of AN to PanINs is unclear<sup>12–14</sup>.

In a previous study our group assessed the prevalence and severity of PanINs according to the type of pancreatic fatty infiltration. We showed that the intra-pancreatic infiltration and fibrosis in OB patients were correlated to BMI and the presence of dysplastic lesions, providing further evidence of the direct link between obesity, chronic pancreatic inflammation and cancer<sup>15</sup>. Two different types of fatty infiltration were observed in the pancreatotomy specimens: intra and extra lobular locations. Both were significantly associated with the presence and/or number of PanINs. We also observed that patients with predominantly intra-visceral fat distribution had more PanIN lesions. On multivariate analysis PanINs were associated with extralobular (ELF) and intralobular (ILF) infiltrations. Other risk factors for PanIN were also found in particular, intralobular fibrosis and a higher BMI<sup>15,16</sup>.

We hypothesize that the composition and pathophysiological role of intra (ILF) and extra lobular fat (ELF) may be different depending on the presence and the stage of precancerous pancreatic lesions (ADM, PanIN) and that pancreatic fatty infiltration plays a key role in the oncogenesis process of the pancreas.

We first evaluated the lipid profiles of pancreatic ILF and ELF by MALDI-MSI and searched for specific lipid peaks linked to BMI and PanINs in malignant pancreatic tumors. Based on the results we performed a comparative study between OB and NOB patients to (1) assess the ELF transcriptomic profiles of each, (2)

analyze the transcriptomic profiles of acinar tissue neighboring ILF (Ac/ILF+) compared to that without ILF infiltration (Ac/ILF-), and (3) characterize precancerous lesions in OB patients by morphological and immunohistochemical analyses.

## Results

### MALDI LIPIDOMIC analysis

#### Patients

Thirty patients (21 (NOB) and 9 (OB)) were included in group 1 to assess the lipidomic profiles of pancreatic ILF and ELF by MALDI-MSI and search for specific lipid peaks associated with BMI and PanIN in malignant pancreatic tumors. The clinical features are summarized in supplemental Table 1.

### Distribution of differential lipid-peaks by MALDI-TOF analysis

Twenty ELF regions of interest (ROIs) and 21 ILF ROIs were selected and principal component analysis (PCA) was performed according to the BMI and the presence of PanINs (Fig. 1A). The samples were differentially distributed according to the type of fatty infiltration (ILF or ELF) (Fig. 1B) and to the presence of PanINs (PanIN+) (Fig. 1C). This differential distribution of ILF and ELF samples was also observed in OB patients (Fig. 1E). The difference between ILF and ELF was not evident in patients without PanIN lesions (PanIN- group) (Fig. 1D) or when the BMI was normal ( $BMI \leq 25$ ) (Fig. 1F). This suggests that the lipid composition between ILF and ELF is different in OB patients with malignant pancreatic tumors and in the presence of PanINs.

The PCA did not show any clear clusters of the same fat types (ELF or ILF) according to PanIN or BMI (supplemental Fig. 2).

### ELF and ILF present specific lipid-peaks by MALDI TOF analysis

After segmentation using SCiLS Lab Pro® software, 184 peaks were identified in this dataset. Thirty-seven of these lipid peaks were specific to ELF and 18 to ILF ( $AUC > 0.75$ ). Multivariate analysis of the peaks of interest in a model including peak intensity, BMI and the presence of PanIN, was performed to identify peaks that were independently specific to fat types (ILF or ELF). Multivariate analysis identified 21 peaks specific to ELF and 2 to ILF (supplemental Table 2). The 2 ILF-specific peaks were related to BMI and were confirmed on univariate analysis ( $p = 0.04$ ). Four ELF-specific peaks were correlated to an increased BMI (considered as a continuous value) and 17 were associated with the presence of PanINs (PanIN+ group), confirmed on univariate analysis ( $p < 0.05$ ) (supplemental Table 2). The significant lipid peaks are summarized in supplemental Table 2. These results confirm that patients with malignant tumors have different ELF and ILF lipid compositions and that obesity ( $BMI \geq 30$ ) influences ILF and ELF lipid composition. Moreover, the presence of PanINs influences ELF-specific lipids, but not ILF lipid composition.

### Lipid-peak validation on MALDI FTICR analysis and their identification using the LIPID MAPS® database

The  $m/z$  confirmation was performed in situ by MALDI FTICR mass spectrometry imaging (FTICR SolariX 7T) with higher spectral resolution than the MALDI TOF analysis. Analysis with this high-resolution technique (105 to 106 FWHM) and high precision mass measurement in the sub-ppm range<sup>17</sup> was more accurate.

MALDI FTICR analysis was performed to obtain more accurate lipid peak mass and the LIPID MAPS® Structure Database (LMSD, <https://www.lipidmaps.org/data/structure/>) was used to identify category and class.

Sixteen ELF-specific lipid peaks were identified including 5 peaks that were not identified in the LIPID MAPS database (Table 1). The ELF-specific lipid peaks were essentially glycerophospholipids (Glycerophosphocholines, Glycerophosphoethanolamines, Glycerophosphoserines or Glycerophosphoglycerols) and sphingolipids (Phosphosphingolipids). The lipid identification ( $m/z$ ) by MALDI FTICR and LIPID MAPS database are summarized in Table 1. One example of an ELF-specific glycerophospholipid ( $m/z$  830.56716) associated with the presence of PanINs is shown in Fig. 2A–C. Two ILF-specific lipid peaks were  $m/z$  798.5214 ( $C_{45}H_{78}NO_6PK$ ) as well as  $m/z$  799.56221 ( $C_{43}H_{85}O_8PK$ ) which was identified as a Glycerophosphate [GP10] lipid class (Table 1, Fig. 2D–2F). This lipid peak is also over-expressed in the parenchyma as showed in the FTICR figure (Fig. 2C).

Glycerophosphocholines and Glycerophosphoethanolamines in ELF, and Glycerophosphates in ILF, were specific to OB patients with malignant pancreatic tumors. Glycerophosphocholines, Glycerophosphoethanolamines, Glycerophosphoserines or Glycerophosphoglycerols) and sphingolipids (Phosphosphingolipids) specific to the ELF were related to the presence of PanIN lesions (PanIN+) in OB patients with malignant pancreatic tumors.

Based on the observation that ELF and ILF have specific lipid-peaks in patients with malignant pancreatic tumors and that ILF lipid-peaks were related to obesity, we hypothesized that the ELF and the ILF in OB patients could play a role in the initiation of precancerous pancreatic lesions (PanINs). We therefore performed transcriptomic analysis of ELF and the pancreatic parenchyma (mostly acinar cells) infiltrated or not by ILF in OB and NOB patients.

### Transcriptomic profiles of pancreatic tissue–RNA-seq analysis

#### Patient characteristics

Nine OB ( $BMI \geq 30 \text{ kg/m}^2$ ) and 13 NOB patients ( $BMI \leq 25 \text{ kg/m}^2$ ) were included in Group 2 to assess the transcriptomic profiles of acinar tissue neighboring ILF (Ac/ILF+), acinar tissue without ILF (Ac/ILF-), and ELF. The general patient characteristics are presented in supplemental Table 3.

| m/z (TOF)               | m/z (FTICR) | Matched m/z : LIPID MAPS® (LMSD) | Brut Formula  | Lipid category            | Lipid class   |
|-------------------------|-------------|----------------------------------|---|---------------------------|---|
| 518.292*                | 518.32143   | 518.3217                         | C <sub>24</sub> H <sub>50</sub> NO <sub>7</sub> PNa               | Glycerophospholipids [GP] | Glycerophosphocholines [GP01] Glycerophosphoethanolamines [GP02]                              |
| 534.271*                | 534.29581   | 534.2956                         | C <sub>24</sub> H <sub>50</sub> NO <sub>7</sub> PK                | Glycerophospholipids [GP] | Glycerophosphocholines [GP01] Glycerophosphoethanolamines [GP02]                              |
| 558.311*#               | 558.29599   | 558.2956                         | C <sub>26</sub> H <sub>50</sub> NO <sub>7</sub> PK                | Glycerophospholipids [GP] | Glycerophosphocholines [GP01]   |
| 560.315*                | 560.31183   | 560.3113                         | C <sub>26</sub> H <sub>52</sub> NO <sub>7</sub> PK                | Glycerophospholipids [GP] | Glycerophosphocholines [GP01]   |
| 725.541 <sup>‡</sup>    | 725.55617   | 725.5568                         | C <sub>39</sub> H <sub>79</sub> N <sub>2</sub> O <sub>6</sub> PNa | Sphingolipids [SP]        | Phosphosphingolipids [SP03]   |
| 726.543 <sup>‡</sup>    | 726.56005   | 726.5620                         | C <sub>39</sub> H <sub>78</sub> NO <sub>8</sub> PLi               | Not identified            |   |
| 728.546                 | 728.51977   | 728.5201                         | C <sub>38</sub> H <sub>76</sub> NO <sub>8</sub> PNa               | Glycerophospholipids [GP] | Glycerophosphocholines [GP01] Glycerophosphoethanolamines [GP02]                              |
| 735.558 <sup>‡</sup>    | 735.57208   | 735.5647                         | C <sub>39</sub> H <sub>76</sub> NO <sub>8</sub> P                 | Not identified            |   |
| 756.545 <sup>‡</sup>    | 756.55069   | 756.5514                         | C <sub>40</sub> H <sub>80</sub> NO <sub>8</sub> PNa               | Glycerophospholipids [GP] | Glycerophosphocholines [GP01] Glycerophosphoethanolamines [GP02]                              |
| 757.546 <sup>‡</sup>    | 757.55441   | 757.5508                         | C <sub>41</sub> H <sub>83</sub> O <sub>7</sub> PK                 | Glycerophospholipids [GP] | Glycerophosphates [GP10]  |
| 768.565 <sup>‡</sup>    | 768.55144   | 768.5514                         | C <sub>41</sub> H <sub>80</sub> NO <sub>8</sub> PNa               | Glycerophospholipids [GP] | Glycerophosphocholines [GP01] Glycerophosphoethanolamines [GP02]                              |
| 782.54 <sup>‡</sup>     | 782.54313   | 782.5460                         | C <sub>42</sub> H <sub>82</sub> NO <sub>7</sub> PK                | Glycerophospholipids [GP] | Glycerophosphocholines [GP01] Glycerophosphoethanolamines [GP02]                              |
| 783.542 <sup>‡</sup>    | 783.5531    | 783.5534                         | C <sub>44</sub> H <sub>79</sub> O <sub>9</sub> P                  | Glycerophospholipids [GP] | Glycerophosphoglycerols [GP04]  |
| 792.557 <sup>‡</sup>    | 792.56663   | 792.5668                         | C <sub>44</sub> H <sub>84</sub> NO <sub>6</sub> PK                | Not identified            |   |
| 830.572 <sup>‡</sup>    | 830.56716   | 830.5670                         | C <sub>46</sub> H <sub>82</sub> NO <sub>8</sub> PNa               | Glycerophospholipids [GP] | Glycerophosphocholines [GP01] Glycerophosphoethanolamines [GP02] Glycerophosphoserines [GP03] |
| 831.574 <sup>‡</sup>    | 831.56976   | 831.5706                         | C <sub>40</sub> H <sub>80</sub> NO <sub>13</sub> P                | Not identified            |   |
| 832.576 <sup>‡</sup>    | 832.58215   | 832.5827                         | C <sub>46</sub> H <sub>84</sub> NO <sub>8</sub> PNa               | Glycerophospholipids [GP] | Glycerophosphocholines [GP01] Glycerophosphoethanolamines [GP02]                              |
| 833.577 <sup>‡</sup>    | 833.5852    | 833.5878                         | C <sub>46</sub> H <sub>83</sub> O <sub>10</sub> PLi               | Not identified            |   |
| 834.579 <sup>‡</sup>    | 834.59806   | 834.5983                         | C <sub>46</sub> H <sub>86</sub> NO <sub>8</sub> PNa               | Glycerophospholipids [GP] | Glycerophosphocholines [GP01] Glycerophosphoethanolamines [GP02]                              |
| 835.628 <sup>‡</sup>    | 835.66682   | 835.6663                         | C <sub>47</sub> H <sub>93</sub> N <sub>2</sub> O <sub>6</sub> PNa | Sphingolipids [SP]        | Phosphosphingolipids [SP03]   |
| 836.63 <sup>‡</sup>     | 836.66838   | 836.6610                         | C <sub>49</sub> H <sub>89</sub> NO <sub>9</sub>                   | Sphingolipids [SP]        | Phosphosphingolipids [SP03]   |
| Intra lobular fat (ILF) |             |                                  |   |                           |   |
| 798.519 *               | 798.5214    | 798.5198                         | C <sub>45</sub> H <sub>78</sub> NO <sub>6</sub> PK                | Not identified            |   |
| 799.569*                | 799.56221   | 799.5614                         | C <sub>43</sub> H <sub>85</sub> O <sub>8</sub> PK                 | Glycerophospholipids [GP] | Glycerophosphates [GP10]  |

**Table 1.** Lipid identification with LIPID MAPS® Structure Database (Group 1). \*Lipid-peaks specific to obesity (BMI ≥ 30). ‡Lipid-peaks specific to the presence of PanIN lesions (PanIN+).

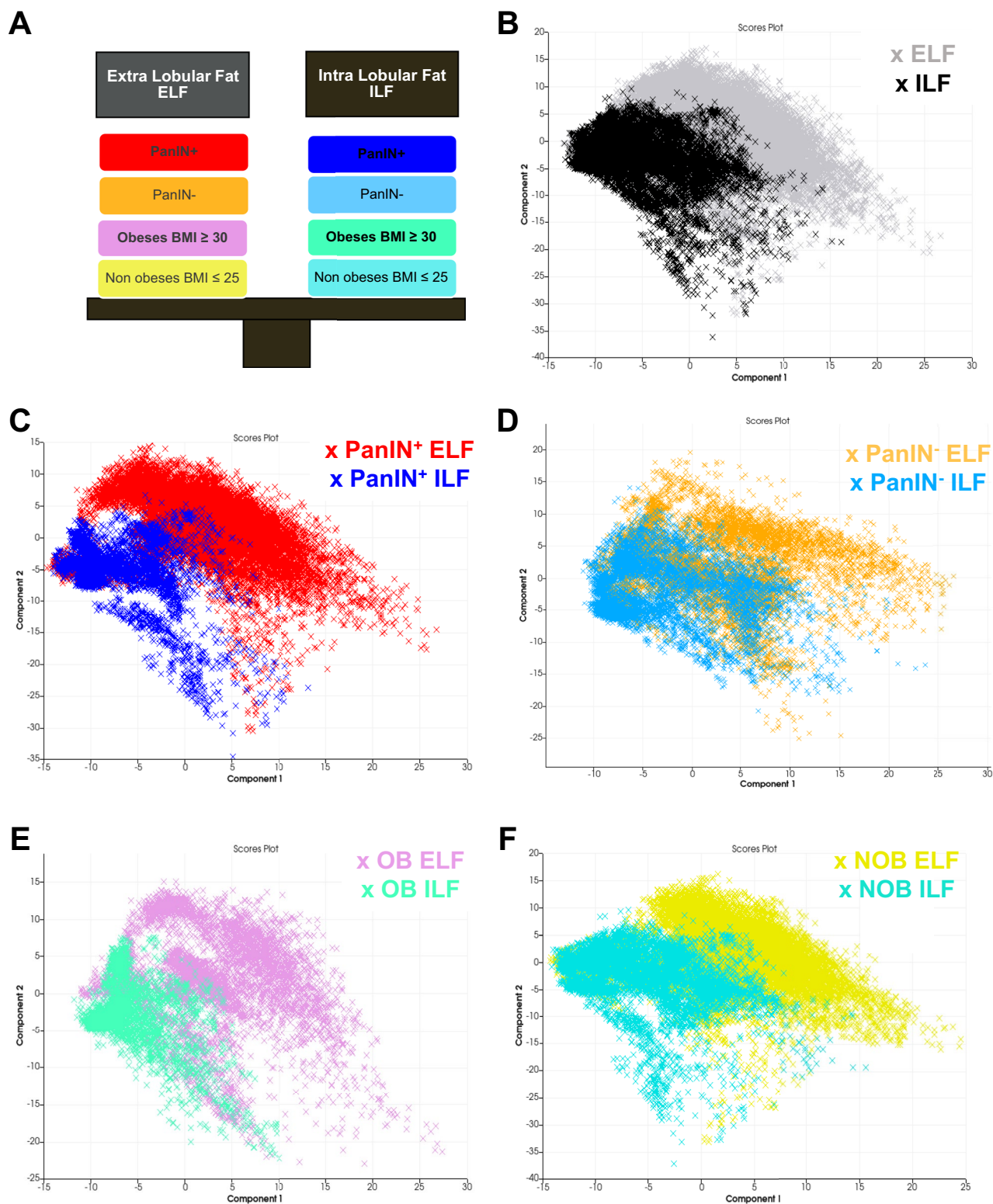
### Lipid metabolism is altered in the ELF of obese patients

RNA-seq analyses identified changes in ELF gene expression depending on obesity status. GSEA analysis showed significant up-regulation of NOB ELF pathways (Fig. 3A) in particular lipid metabolism pathways (especially  $\beta$ -oxidation of fatty acids), TGF- $\beta$  receptor-signaling pathway, DNA damage and repair pathways, pro-inflammatory-signaling pathways (interleukins (IL2, IL6, IL1), interferon ( $\alpha$ ,  $\gamma$ ) and tumor necrosis factor pathways (TNF)) and autophagy. We found that sphingolipid metabolism and fatty acid  $\beta$ -oxidation pathways were the most important and redundant enriched pathways in the NOB group compared to the OB group, for example mitochondrial fatty acid  $\beta$ -oxidation was significantly more enriched in the NOB group (NES = -1.49,  $p = 0.04$ ) (Fig. 3B). The inflammatory pathways that were enriched in the NOB group were pro-inflammatory signaling pathways such as interferon, TNF mediators and interleukins, in particular IL6-mediated signaling (NES = -2.34,  $p = 6.10^{-7}$ ) (Fig. 3C). The raw gene count is provided in supplemental Table 4. These results suggest that the lipid metabolism is altered in the ELF of OB patients with benign pancreatic tumors.

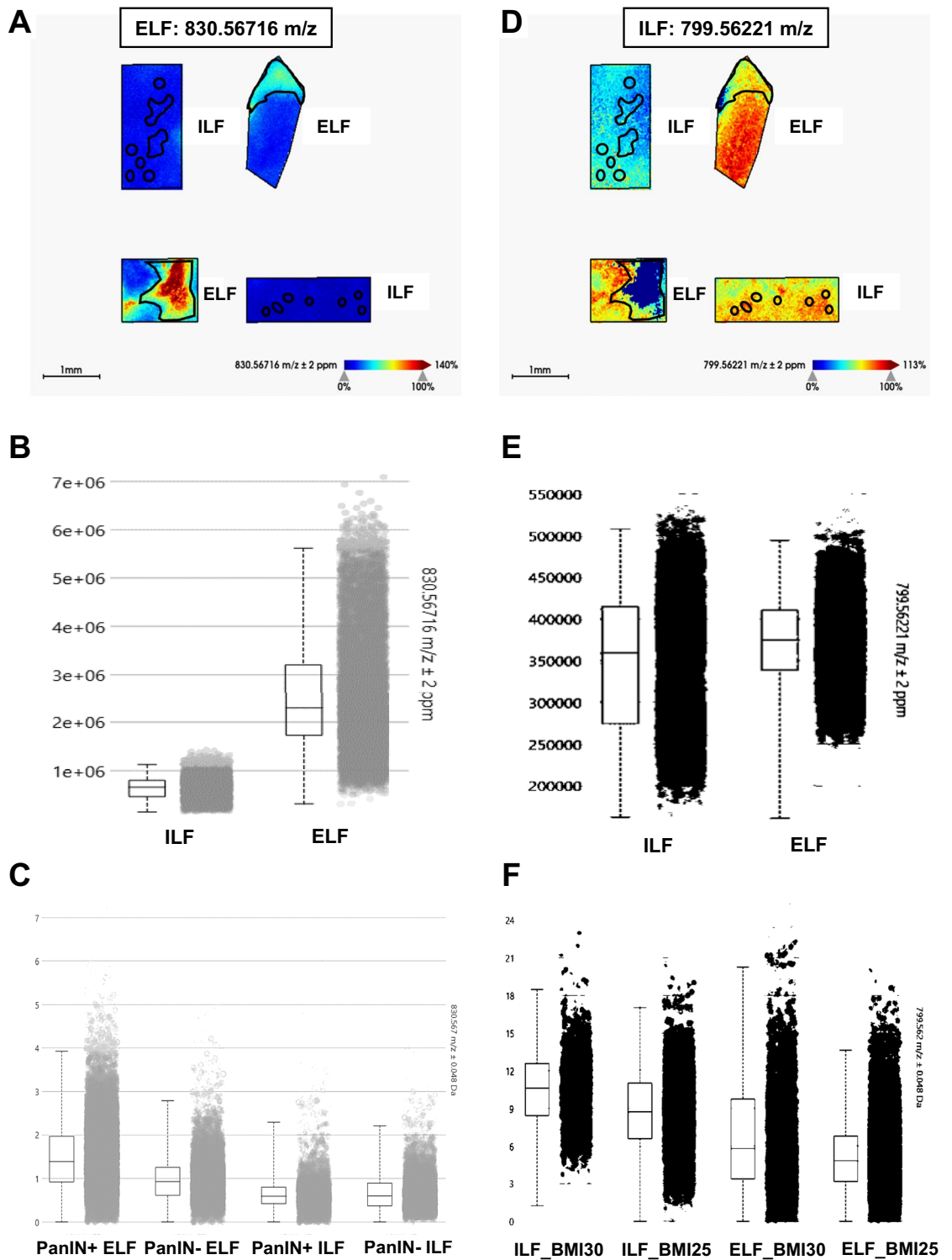
### Obesity (especially ILF) enhances parenchymal (Ac/ILF+) inflammation of the pancreas in obese patients

The transcriptomic profiles of acinar tissue without ILF infiltration (Ac/ILF-) were different between OB and NOB patients in relation to their metabolic and inflammatory pathways. In the OB group, Hallmark, C2 (KEGG, Reactome) and C5 (GO) databases showed TGF- $\beta$  (NES = 1.7,  $p = 0.001$ ) and inflammatory pathway enrichment in particular for interferon (IFN $\gamma$ ), TNFR signaling (NES = 1.77,  $p = 3.10^{-4}$ ) and some proinflammatory interleukins such as IL1 (NES = 1.92,  $p = 5.10^{-6}$ ) (Fig. 4A). Expression of ribosome and protein processing in the endoplasmic reticulum pathways (usual pathways of secretory acinar cells) was greater in the Ac/ILF- in OB patients than in that of NOB patients (Fig. 4A).

The comparisons of Ac/ILF- and Ac/ILF+ in OB patients showed upregulation of numerous pathways represented in GSVA analysis (Fig. 4B) such as: sphingolipid and fatty acid- derived biosynthetic processes, certain TGF- $\beta$ -signaling pathways, oxidative stress (Reactive oxygen species, ROS) and inflammatory-signaling pathways.



**Figure 1.** Principal component analysis (PCA) score plots of lipid peaks in OB and NOB patients. **(A)** Explanatory diagram of the different comparisons (the colors correspond to the representation of sample groups in each PCA). **(B)** PCA score plots of ILF (black dots) and ELF (gray dots) based on OB and NOB patient data indicating a segmentation between ILF and ELF in all patients. **(C)** PCA score plots of ILF (blue dots) and ELF (red dots) based on PanIN<sup>+</sup> patient data allowing a segmentation between ILF and ELF. **(D)** PCA score plots of ILF (light blue dots) and ELF (orange dots) based on the data from patients without PanIN lesions (PanIN<sup>-</sup>) resulting in non-segmentation between ELF and ELF. **(E and F)** PCA score plots of ILF and ELF based on the BMI (OB in E and NOB in F) with a segmentation between ELF and ILF in OB patients. PCA score plots were generated using Scils Lab Pro<sup>®</sup> software. ILF, pancreatic intralobular fat; ELF, pancreatic extralobular fat; BMI, body mass index; OB, obese patient; NOB, non-obese patient; PanIN, pancreatic intraepithelial neoplasia.



**Figure 2.** Example of the specific peaks of interest in ILF or ELF analyzed by MALDI FTICR. FTICR image of the m/z 830.56716 ELF and PanINs—specific lipid peak (A) and box plot comparing peaks between ILF and ELF in FTICR analysis (B) or in MALDI TOF analysis according to the presence or absence of PanINs (C). FTICR image of the m/z 799.56221 OB patient ILF-specific lipid peaks (D) and box plot comparing ILF and ELF in FTICR analysis (E) or in MALDI TOF analysis according to BMI (F). *ILF*, pancreatic intralobular fat; *ELF*, pancreatic extralobular fat; *PanIN*, pancreatic intraepithelial neoplasia; *BMI*, body mass index; *OB*, obese patients; *NOB*, non-obese patients.

The expression of ribosome pathways was greater in the Ac/ILF- in OB than in that of Ac/ILF+ (NES = -1.92,  $p = 3.10^{-5}$ ) (Fig. 4C) as observed by comparing Ac/ILF- between NOB and OB patients. Most of the inflammatory pathways found in the Ac/ILF- of OB patients were cytokines and interleukins such as IFNG (NES = 1.67,  $p = 8.10^{-4}$ ), IL1R (NES = 1.95,  $p = 9.10^{-5}$ ), IL6 and IL7 (NES = 1.97,  $p = 4.10^{-5}$ ) (Fig. 4D).

Expression of some interleukins and their receptors/substrate such as IL1 (IL1B and IL1R1), IFNGR1 and IL6 (IL6ST) in the different acinar tissues (Ac/ILF- and Ac/ILF+) was gradually up-regulated (related to the presence of fatty infiltration) in the Ac/ILF- and the Ac/ILF+ of OB patients compared to that in NOB patients ( $p < 0.05$ ) (Fig. 4E).

There was more inflammation in the pancreatic parenchyma (acinar tissue) of OB patients with benign pancreatic tumors than in NOB patients. The increase in inflammatory pathways was greater in acinar tissue that was near to ILF infiltration (Ac/ILF+) in OB patients.

### Characterization of a new precancerous lesions of the pancreas in obese patients with benign tumors

To assess the effect of obesity on the process of the initiation of precancerous lesions of the pancreas, we performed pathological and morphological analyses of the samples of the pancreas previously analyzed by RNA-seq.

This included 14 patients (8 OB and 6 NOB patients) from group 2 (RNA-seq analysis) with complete morphological and IHC analyses.

The pathological parameters evaluated in each sample in the OB and NOB groups are summarized in Table 2.

Two types of acinar areas were quantified on IHC staining (acinar, ductal and fibroblastic markers); those without ILF (Ac/ILF-) as a control, and acinar nodules (AN) (Fig. 5A). Computer-assisted quantifications (QuPath® and HALO® softwares) showed decreased expression of the acinar marker BCL10 in OB patient ANs compared to OB patient Ac/ILF- ( $p = 0.0458$ ) (Fig. 5B). BCL10 expression was also lower in OB patient Ac/ILF- than in NOB patients ( $p < 0.0001$ ) (Fig. 5B). In addition, the expression of the nuclear ductal marker Sox9 was greater in OB patient ANs than in OB patient Ac/ILF- ( $p = 0.0015$ ) (Fig. 5C). Interestingly, Sox9 expression was lower in OB patient Ac/ILF- than that in NOB patients ( $p < 0.0001$ ) (Fig. 5C).

Expression of ductal markers in acinar cells from ANs compared to that of controls (Ac/ILF-) was confirmed by the upregulation of the cytoplasmic ductal marker CK7 in OB and NOB patient ANs ( $p < 0.0001$  and  $p = 0.0047$ , respectively) (Fig. 5D). Surprisingly, there was no difference in the expression of the fibroblastic marker ( $\alpha$ SMA) between OB patient ANs and Ac/ILF-, and expression was reduced in NOB patient ANs compared to controls Ac/ILF- ( $p = 0.0287$ ) (Fig. 5E). Nevertheless,  $\alpha$ SMA expression was greater in OB patient Ac/ILF- ( $p = 0.0003$ ) and ANs ( $p < 0.0001$ ) than in NOB patients (Fig. 5E).

There was no difference between OB and NOB patients for the quantification of inflammatory markers throughout the parenchyma. The number of CD163 macrophages was high while the number of CD8 was low in both OB ( $p = 0.0111$ ) and NOB ( $p = 0.0022$ ) patients.

These results suggest that the acinar phenotype of the pancreatic parenchyma (Ac/ILF-) in OB patients is transformed in the presence of benign tumors of the pancreas. In addition, early transformation of acinar tissue into so-called “acinar nodules” (AN) is related to obesity in benign tumors of the pancreas, suggesting that AN could be the first precancerous lesion of the pancreas in OB patients.

### Precancerous epithelial lesions (PanIN, ADM, AN) and pancreatic fatty infiltration type (ILF/ELF)

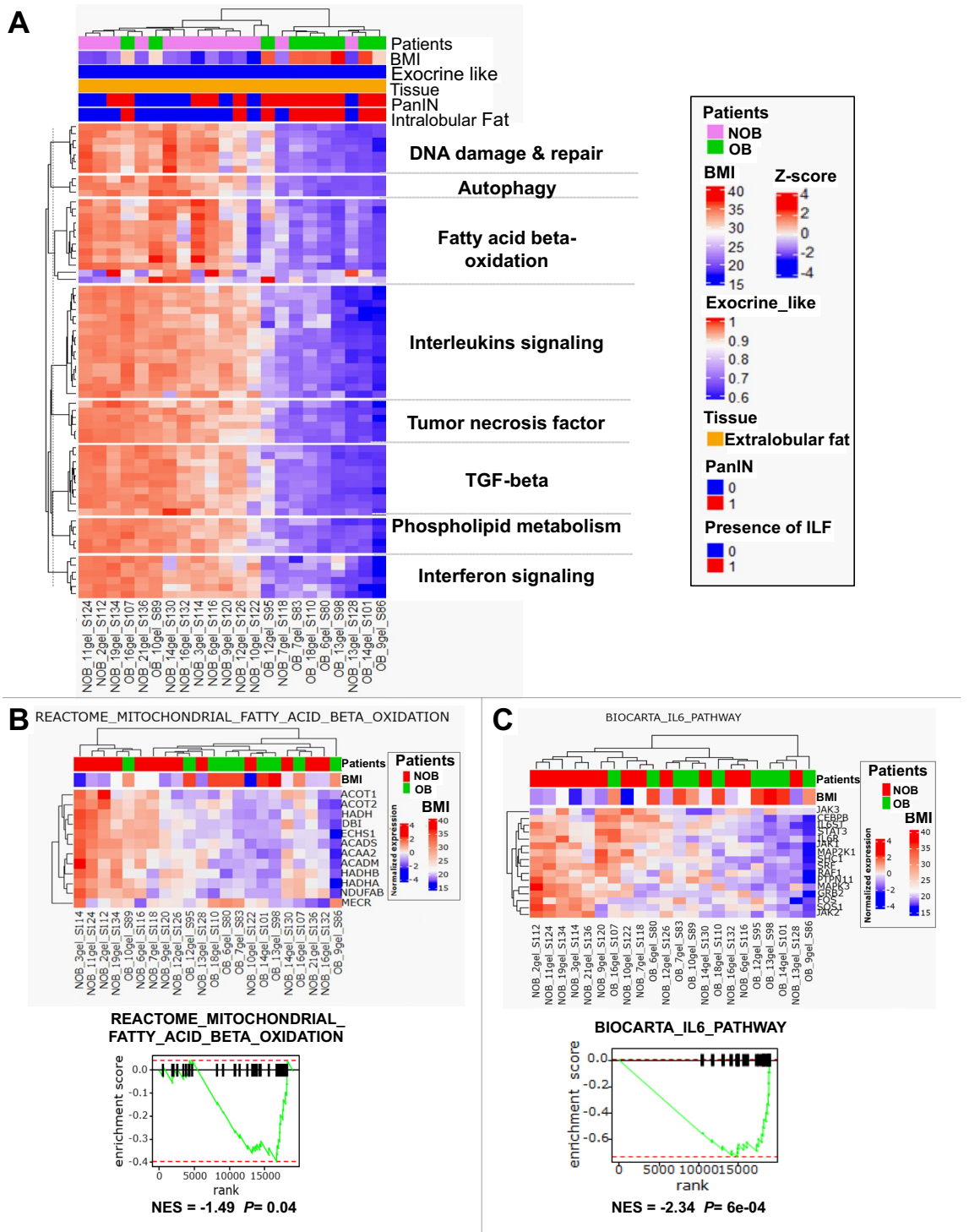
The epithelial lesions that were identified were divided into early preneoplastic acinar lesions (acinar dedifferentiated, corresponding to acinar nodules (AN) and acinar-to-ductal metaplasia (ADM)), and late neoplastic lesions (PanINs). The total number of PanINs was significantly greater in OB patients than in NOB patients ( $p = 0.05$ ) (Table 2). There was a tendency to an increased number of ADM in OB patients ( $p = 0.08$ ) (Table 2). There was no difference in the number of ANs between OB and NOB patients. Both ILF and ELF pancreatic infiltration was significantly increased in OB patients (ELF,  $p = 0.0029$  and ILF,  $p = 0.0103$ ) (Table 2). These results show that obesity induces increased pancreatic fatty infiltration (ELF and ILF). There was no significant difference in the extent of fibrosis between OB and NOB patients (Table 2).

There was no association between ANs and ILF, ELF or fibrosis in OB or NOB patients (Fig. 6A) suggesting the very early and plastic characteristic of this lesion. The same result was observed for ADM lesions (Fig. 6B). However, there was a relationship between the total number of PanINs and pancreatic fatty infiltration. There was

| Pathological parameters  | OB, n = 8 | NOB, n = 6 | p      |
|--|-----------|------------|--------|
| Number of acinar nodules (AN)*                                 | 4 [0–16]  | 5 [0–11]   | NS     |
| Number of acinar-to-ductal metaplasias (ADM)*                  | 0.5 [0–6] | 0 [0–0]    | 0.0849 |
| Total number of pancreatic intraepithelial neoplasias (PanIN)* | 7 [0–19]  | 0 [0–9]    | 0.05   |
| Extralobular fatty infiltration (ELF) scores*                  | 1 [1, 2]  | 0 [0–0]    | 0.0029 |
| Intralobular fatty infiltration (ILF) scores*                  | 2 [1, 2]  | 0 [0–1]    | 0.0103 |
| Fibrosis Score*  | 1 [0–2]   | 0 [0–1]    | 0.0924 |

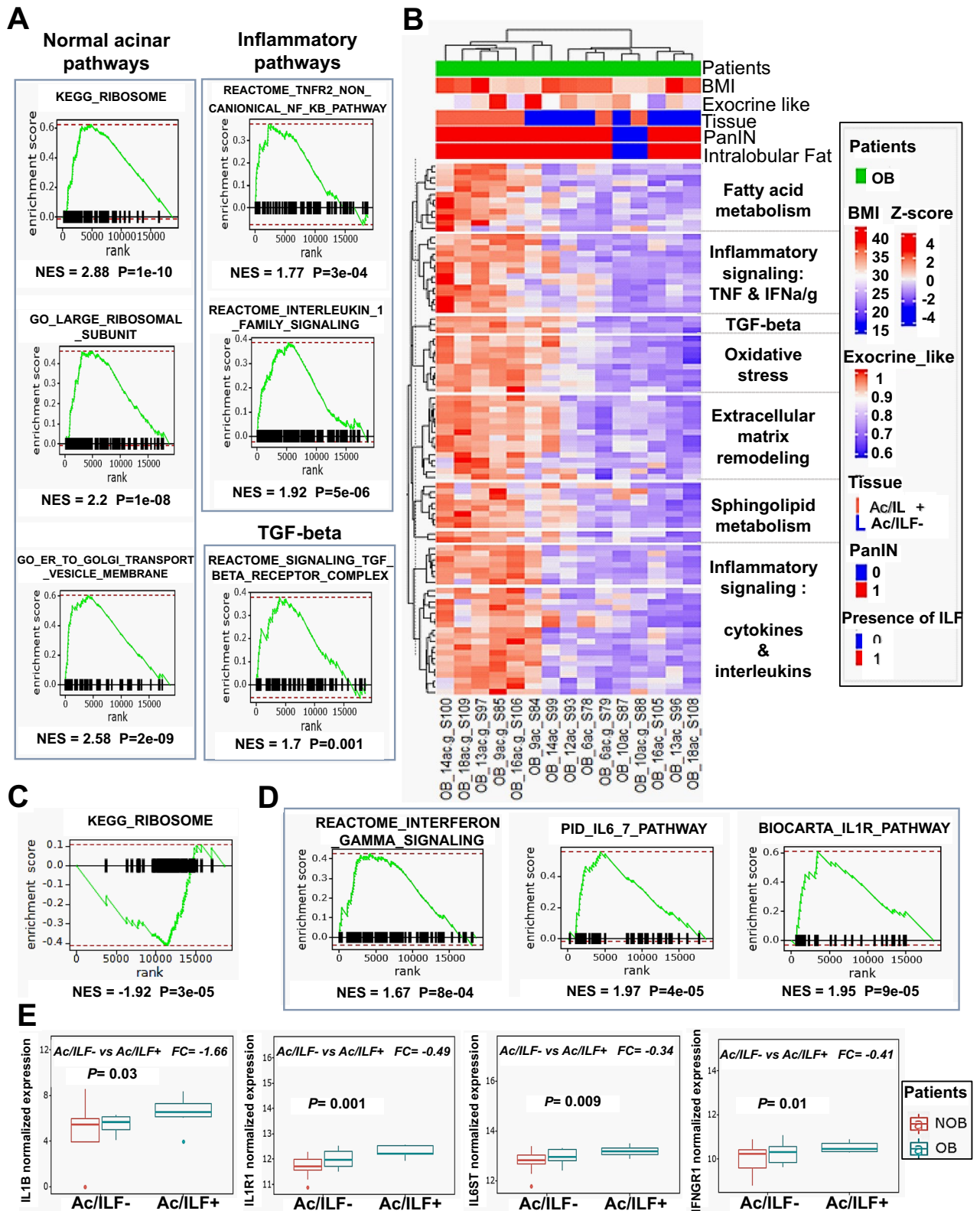
**Table 2.** Pathological characteristics of Group 2 (IHC analysis). \*Quantitative data are expressed as medians and ranges.



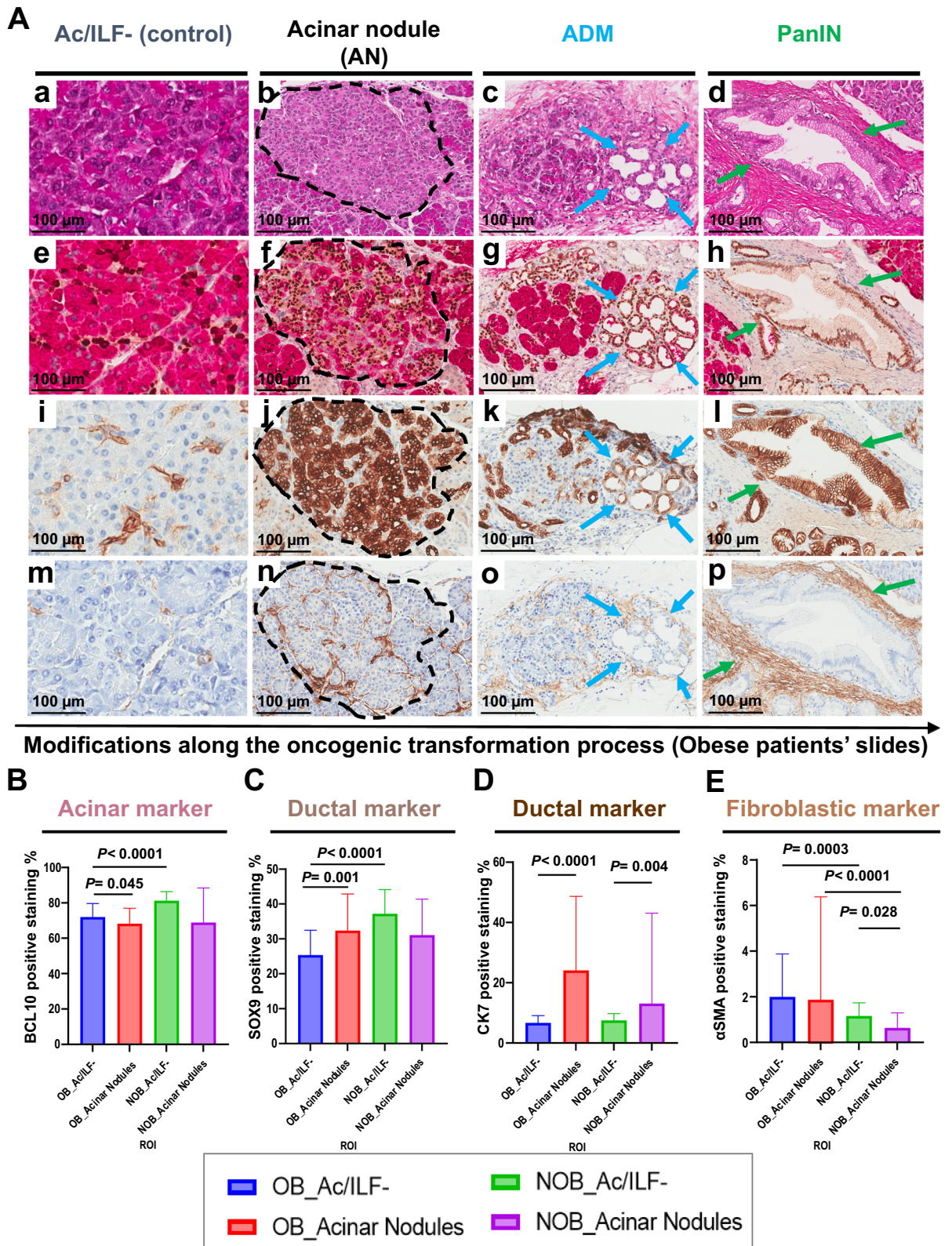


**Figure 3.** Gene set variation analysis of enriched pathways in ELF tissue. (A) Heat map of GSVA of pathways that were significantly enriched in the ELF tissue of NOB patients compared to OB patients. (B and C) Heat map of genes involved in beta-oxidation (B) and IL6 (C) enriched pathways and their respective leading edge. OB, obese; NOB, non-obese; BMI, body mass index; PanIN, pancreatic intraepithelial neoplasia; ILF, pancreatic intralobular fat; ELF, pancreatic extralobular fat. NES, normalized enrichment score.

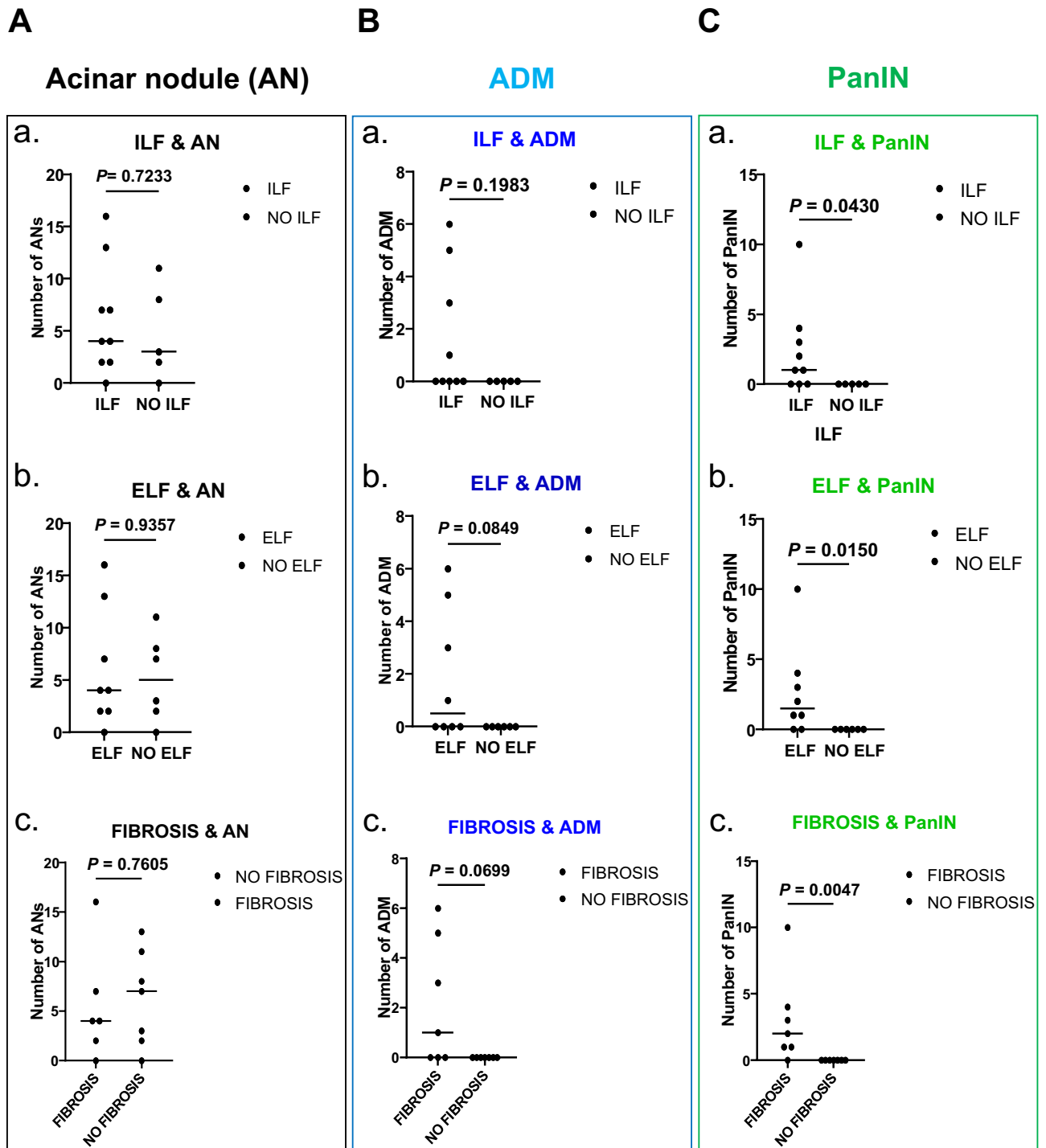
a significant association between the total number of PanINs and the ILF ( $p = 0.0430$ ) and ELF ( $p = 0.015$ ) scores (Fig. 6C,a and b). Also, the total number of PanINs was correlated to the fibrosis score ( $p = 0.0047$ ) (Fig. 6C,c). These results confirm that PanINs are also related to fatty infiltration (ELF and ILF) in OB patients with benign pancreatic tumors.



**Figure 4.** Gene set variation analysis of enriched pathways in acinar tissue. (A) Leading edge of enriched pathways in the Ac/ILF- of OB patients compared to NOB patients. (B) Heat map of the most significantly enriched pathways in Ac/ILF+ compared to Ac/ILF- in OB patients. (C) Leading edge of enriched pathways in Ac/ILF- compared to Ac/ILF+ in OB patients. (D) Leading edge of enriched inflammatory cytokines in Ac/ILF+ compared to Ac/ILF- in OB patients. (E) Boxplot showing the expression of IL1B, IL1R1, IL6ST and IFNGR1 in the Ac/ILF- of OB and NOB patients and in the Ac/ILF+ of OB patients. OB, obese patients; NOB, non-obese patients; BMI, body mass index; PanIN, pancreatic intraepithelial neoplasia; NES, normalized enrichment score; ILF, pancreatic intralobular fat; Ac/ILF-, acinar tissue without ILF infiltration; Ac/ILF+, acinar tissue next to ILF infiltration.



**Figure 5.** Histopathological analyses (H&E and IHC stainings) of quantified ROIs. (A); (a–d) H&E staining of Ac/ILF- ROIs as controls, acinar nodules (AN), ADM and PanIN lesions in OB patients. IHC staining of ROIs in and OB patient for BCL10/Sox9 (e–h), CK7 (i–l) and αSMA (m–p) of NA-control ROIs, ANs, ADM and PanIN lesions in an OB patient. (B to E) Quantification of IHC staining of BCL10 (B) SOX9 (C), CK7 (D) and αSMA (E) of Ac/ILF- and AN areas from pancreatic tissue of OB and NOB patients. OB, obese; NOB, non-obese; ILF, pancreatic intralobular fat; Ac/ILF-, acinar tissue without ILF infiltration; AN, acinar nodule (black contouring); ADM, acinar-to-ductal metaplasia (blue arrows); PanIN, pancreatic intraepithelial neoplasia (green arrows).



**Figure 6.** Metaplastic and neoplastic precancerous lesions with ILF/ELF and fibrosis in obese and non-obese patients. (A) Scatter plot analysis of the number of AN in relation to the presence/absence of ILF (a), ELF (b) and fibrosis (c). (B) Scatter plot analysis of the number of ADM lesions in relation to the presence/absence of ILF (a), ELF (b) and fibrosis (c). (C) Scatter plot analysis of the total number of PanINs in relation to the presence/absence of ILF (a), ELF (b) and fibrosis (c). AN, acinar nodule; ADM, acinar-to-ductal metaplasia; PanIN, pancreatic intraepithelial neoplasia; ILF, pancreatic intralobular fat; ELF, pancreatic extralobular fat. Mann–Whitney test was performed for all the analyses.

### Discussion

Obesity, and especially android obesity, which is characterized by intravisceral fat infiltration, has been shown to be one of the key risk factors of PDAC. Obesity is known to be associated with pancreatic fat infiltration and

two types of pancreatic fat depositions have been described, intralobular (ILF) or extralobular (ELF)<sup>15</sup>. This study evaluated the pathophysiological roles of ILF and ELF in the early oncogenic process in patients with obesity.

Our study found more fat infiltration, both ILF and ELF, and a higher number of PanINs in the pancreases of OB patients, confirming the impact of obesity (fatty infiltration especially) in the oncogenesis process.

We performed MALDI lipidomic analysis specifically for malignant tumors to analyze the long-term and high-risk of obesity in the development of carcinomas.

The constitutions of ILF and ELF were found to be different in all subgroup analyses, with 16 ELF-specific and 2 ILF-specific lipids despite limited ILF detection due to the lipid delocalization phenomenon and even though quantitative lipidomic analysis such as liquid chromatography MS was not performed. Nevertheless, high resolution (20µm) MALDI-MSI is interesting for in situ analysis of small areas of heterogeneous parenchyma with a few scattered adipocytes.

The lipid peaks identified in ELF were correlated with an increase in BMI (4 lipid peaks) and PanINs (17 lipid peaks) and were essentially glycerophospholipids and sphingolipids. The 2 ILF-specific lipid peaks were iGlycerophosphates [GP10], a class of lipids related to obesity (BMI ≥ 30). This supports our hypothesis that OB patient ILF could play a role in the initiation of precancerous lesions of the pancreas (PanINs). These results suggest that Glycerophosphocholines and Glycerophosphoethanolamines in ELF and Glycerophosphates in ILF are specific to OB patients presenting with malignant pancreatic tumors. Elf-specific Glycerophosphocholines, Glycerophosphoethanolamines, Glycerophosphoserines or Glycerophosphoglycerols and sphingolipids (Phosphosphingolipids) are related to the presence of PanIN lesions (PanIN+) in patients with malignant pancreatic tumors. One limit was the need of specific identification of lipid species using techniques such LCMSMS.

Lipid degradation (β-oxidation of fatty acids) and the autophagy pathways were found to be down-regulated in the ELF in OB patients on RNA sequencing, with enriched digestion of dietary lipids pathways. These results are supported by a prior lipidomic study<sup>18</sup> of different tissues that showed that lipid homeostasis was altered with different lipid signatures, which made it possible to differentiate obesity and diabetes from normal tissues<sup>18</sup>. This is probably due to modified lipid catabolic processes causing excess lipid storage.

Our study shows that obesity and ILF infiltration influence the metabolic pathways of acinar cells and they both play a key role in the oncogenesis process. Indeed, we found that acinar tissue neighboring ILF infiltration was enriched via several pathways including lipid (sphingolipid and fatty acid-derived) biosynthetic processes, oxidative stress (Reactive oxygen species (ROS)), TGF-β and inflammatory pathways (cytokines, interleukins, IFN, TNF). This is also associated with a downregulation of ribosome pathways. This could create a stressful environment for normal acinar cells inducing the loss of secretory functions during oxidative stress and inflammation. Moreover, enrichment of inflammatory and TGF-β pathways was also found in acinar tissue without ILF infiltration in OB patients but not in NOB patients. This might be related to systemic, obesity-induced, proinflammatory effects<sup>19–21</sup>.

These results show that the pancreatic parenchyma (mainly acinar cells) is transformed in OB patients with benign pancreatic tumors. Acinar cells appear to be plastic during and after inflammation and to be able to trans-differentiate into duct-like cells, either directly or via an intermediate progenitor. This shows that PDAC could develop via dedifferentiation of acinar cells, before ADM and PanIN lesions<sup>9,10,22,23</sup>. Although this early process has not been clearly described in humans, a recent study with single-nucleus and in situ RNA-sequencing has shown that there are three different types of acinar cells that could play a role in the homeostatic and inflammatory processes of the pancreas. It has been suggested that one of these acinar populations could be linked to the development of precancerous lesions (ADM and PanINs) and PDAC<sup>23</sup>. This sequential process also probably plays a role in the chronic inflammation in obesity and pancreatic fat infiltration.

The functional transformation of acinar cells that was detected neighboring ILF by RNA sequencing, including the loss of secretory functions, is probably accompanied by the morphological changes resulting in so-called acinar nodules (AN), which is an early modification that occurs before the ADM-to-PanIN preneoplastic process.

The morphological approach used in this study identified a modified acinus, with an appearance on H&E stain that was different from the rest of the acinar parenchyma due to a different tinctorial quality (loss of normal basal basophilia) and characterized by a loss of acinar markers and increased ductal markers, but with no tubular structure. These AN have been reported in several studies and called acinar transformation, eosinophilic degeneration, atypical acinar cell nodules, or focal acinar cell dysplasia<sup>12–14,24</sup>. We characterized the ANs by immunohistochemistry in both OB and NOB patients. We found that ANs were related to obesity in patients with benign pancreatic tumors but were not associated with ILF or ELF infiltration. They are probably part of a plastic acinar transformation process. This process may be reversible but might result in ADM in a stressful and specific environment such as during inflammation or in the presence of specific lipid species.

We do not have any morphological tools to identify ANs that are at a higher risk of developing into ADM. More specific analytical tools such as single cell RNA sequencing could help. Interestingly, we found that metaplastic acinar lesions (ADM), a later event that probably corresponds to the transformation of certain acinar nodules, are more abundant in OB patients, and in areas with more fibrosis, although this was not significant ( $p = 0.086$  and  $0.088$ , respectively) probably because there were few cases analyzed. We confirm that PanINs, considered to be a later stage in the precancerous process with dysplasia, are related to fatty infiltration (either ILF and ELF) as well as pancreatic fibrosis.

One of the limits of this study, is the lack of normal pancreatic tissue as controls. There is no possibility of obtaining healthy pancreatic tissue, apart from autopsy series. The indications for pancreatic surgery are all linked to the presence of tumor or chronic pancreatitis lesions. It is also not possible to work on pancreatic biopsies which are too small. We therefore chose to work on surgical parts which are preserved and frozen for better tissue quality. Indeed, on autopsy material unfortunately a degradation of the pancreatic tissue due to the major enzymatic lysis is observed. A second consideration to take into account is the fact that different techniques and

analyses were performed in our 2 groups, which represent different stages of the disease and of the pancreatic oncogenesis. This should be kept in mind in the interpretation of our results.

In conclusion, our study shows that there are two types of pancreatic fat infiltration i.e. ELF and ILF, with different lipid compositions that play different roles in the oncogenesis process, especially in OB patients. ILF plays a major role in acinar modifications and in the development of precancerous lesions in OB patients and ELF may play a role in the progression of PDAC.

## Material and methods

### Patients

We reviewed the medical files of all patients operated for pancreatic tumors in Beaujon Hospital (Tissue library of Beaujon Hospital certified NFS-96-900, Clichy, France) from January 1999 to January 2016. This tissue biobank contains both frozen samples stored at  $-80^{\circ}\text{C}$  and FFPE tissues stored at  $20^{\circ}\text{C}$ . An institutional review board (CEERB, comité d'éthique en recherche biomédicale du Groupe hospitalier universitaire Nord) approval for the study design and the ethical measures was obtained (IRB-00006477). An informed consent was obtained from all subjects. All methods were carried out in accordance with relevant international guidelines and regulations. The preoperative characteristics (age at surgery, BMI, metabolic syndrome, diabetes mellitus, smoking status) and the pathological features were collected.

A total of 52 patients were included in two groups according to clinicopathological data. One group underwent MALDI-TOF-MSI lipidomic analysis (Group 1,  $n = 30$ ) and the other underwent RNA sequencing and histopathological analyses (Group 2,  $n = 22$ ). Subgroups were defined according to BMI as obese (OB,  $\text{BMI} \geq 30$ ) or non-obese (NOB,  $\text{BMI} \leq 25$ ).

Group 1 included 30 patients (9 OB, 21 NOB) operated for malignant tumors (ampullary carcinoma, PDAC, IPMN, cholangiocarcinomas and neuroendocrine carcinomas). MALDI-TOF-MSI analysis was performed on pancreatic tissue. To be certain to remove any obstructive lesions, we selected samples at least 20 mm far from the tumor and when possible downstream the tumor. Moreover, in all cases, morphological analysis of all HE slides was performed to confirm the absence of pancreatitis lesions. We analyzed ILF and ELF compositions and searched for lipid peaks specific for pancreatic oncogenesis and malignancy.

Group 2 included 22 patients (9 OB and 13 NOB) operated for small benign, non-exocrine tumors (neuroendocrine tumors except for one solid pseudopapillary tumor). Tissues analyses were performed on pancreatic tissue without obstructive pancreatitis found downstream from the tumor.

The purpose of this group was to study early physiopathological modifications due to fat infiltration by assessing the transcriptomic profiles of acinar tissue neighboring ILF (Ac/ILF+), acinar tissue without ILF (Ac/ILF-), and of ELF from OB and NOB patients. Thus, patients with malignant tumors such as PDAC or IPMN (intraductal papillary mucinous neoplasia) were excluded.

### Pathological examination: tissue sample selection and classification

Tissue analyses were performed on samples found at a distance from the tumor on normal pancreatic tissue in all patients.

All hematoxylin–eosin–safran-stained (HES) slides were analyzed by light microscopy by a senior pathologist (AC) and two investigators (VR and SF). Investigators were blinded to the clinical data of each patient. The number of PanIN lesions was quantified. The extent and distribution of ILF and ELF was evaluated using the score developed by Klöppel et al.<sup>25</sup>. Briefly this score (0 to 2) was defined as the presence of fat in the interlobular space and the lobules. ELF infiltration was defined as the presence of adipocytes outside the acinar lobules, mainly located in the interlobular and peri-lobular space. Observations were scored as follows: 0: no fatty infiltration, 1: some adipocytes, and 2: numerous adipocytes separating the lobules. ILF infiltration was scored as 0: no or rare adipocytes in some lobules, 1: scattered adipocytes among most of the lobules, and 2: numerous adipocytes in most of the lobules forming clusters of more than 10 cells.

The presence of PanIN lesions was analyzed in groups 1 and 2.

In group 2, the presence of fibrosis was evaluated by a fibrosis score (0 to 3) defined as the presence of connective tissue (0: no connective tissue, 1: mild deposits of fibrosis, 2: moderate or 3: significant amounts of fibrosis) in the interlobular space and the lobules. Samples with a score  $\geq 3$  were considered to have significant fibrosis.

We analyzed three types of pancreatic epithelial lesions on HES and IHC sections: 1/ PanIN lesions, with either low or high grade dysplasia, 2/ Acinar-to-ductal metaplasia lesions (ADM), defined as small duct structures located in acinar tissue with an intermediate morphology between acinar cells and pancreatic ducts, expressing different intensities of ductal markers and acinar markers, 3/ acinar dedifferentiating lesions, defined by the decrease of acinar markers and/or the acquisition of ductal markers, but without ductal morphology and without any lumen formation. We called these lesions “acinar nodules” (AN).

Specific regions of interest (ROIs) were identified by pathological analysis. In group 1 the ROIs for MALDI-TOF-MSI analysis were used to compare ILF and ELF composition between OB and NOB groups and their association to the presence of PanIN lesions (group 1, supplemental Fig. 1).

The ROIs for RNA-seq analysis corresponded to acinar tissue without ILF (Ac/ILF-), acinar tissue near ILF (Ac/ILF+), and ELF tissue (group 2, supplemental Fig. 1). In addition to late preneoplastic lesions (PanINs) and fibrosis, we analyzed ADM and AN in this group, two types of early preneoplastic acinar lesions.

### MALDI lipidomic methods—group 1

#### *Tissue preparation for histology-directed MALDI TOF MSI and spectral acquisition*

For each sample, a 3  $\mu\text{m}$  serial cryosection, to those analyzed by MALDI-MSI, was first stained with hematoxylin–eosin (H&E). For MALDI-MSI, 10  $\mu\text{m}$  thick cryosections were obtained at  $-17^{\circ}\text{C}$  using a cryostat

(Leica CM1950, Leica biosystems). Each section was placed on conductive indium-tin-oxide coated slides (ITO, Bruker Daltonics, Brême, Germany). Matrix was applied by sublimation with a homemade system: 25 mg of 2,5-dihydroxybenzoic acid (DHB) matrix was dissolved with 0.5 mL of acetone, then sublimated at 120–130 °C at 6.10–2 mBar for 7 minutes<sup>26</sup>. The MALDI measurement was performed in positive ionization mode and with reflectron geometry using an Autoflex III MALDI-TOF mass spectrometer. The spatial resolution (Smartbeam laser) was set to 20 µm with 100 laser shots per pixel at 200 Hz. The acquisition was obtained with FlexControl 3.4 and FlexImaging 4.1 software packages (Bruker Daltonics) in the mass range from  $m/z$  400 to 1200 (phospholipids mass spectra) as previously described<sup>17</sup>. All spectra were individually calibrated against abundant and endogenous lipids<sup>27</sup> ( $m/z$  796,52 [PC34:2+ K+];  $m/z$  758,56 [PC34:2+ H+];  $m/z$  824,55 [PC36:2+ K+];  $m/z$  848,55 [PC38:4+ K+];  $m/z$  575,50 [DAG-O 34 :4]).

### MALDI TOF data processing

Statistical analysis was performed with SCiLS Lab® Pro 2023 (Bremen, Germany). The raw images were loaded onto the SCiLS Lab® software and baseline subtraction was performed using the convolution algorithm as well as a weak denoising. Spectra were normalized by total ion current (TIC). The peaks were then aligned using a special tool provided by Bruker<sup>28</sup>. Two ROIs were determined for each case from the overlaid optical or H&E images of ILF and ELF. Segmentation was performed using the software pipeline with weak denoising for all cases to obtain a peak-list of interest.

Multivariate analysis was performed using the relative intensity of each peak from the segmentation peak-list to determine peaks that were associated with either fat type (ILF or ELF), BMI status or the presence/absence of PanINs. The significant ( $p < 0.05$ ) lipid peaks that were individually associated with ILF or ELF and linked to BMI or PanINs, were then kept for univariate analysis. Wilcoxon tests were used to assess the parameters directing the specific expression of each peak of interest.

Comparisons were performed in the ILF or ELF regions according to the presence or absence of PanINs and the BMI (OB or NOB).

### MALDI Fourier-transform ion cyclotron resonance (FTICR) mass spectrometry imaging

The preparation of tissue samples was the same as that described for MALDI-TOF-MSI analysis. Prepared slides were mounted on a slide adaptor (Bruker Daltonik GmbH, Germany) and loaded into the MALDI ionization source of a 7 T FT-ICR mass spectrometer Solarix XR equipped with a Paracell (Bruker Daltonik GmbH, Germany) and piloted by fmsControl software, version 2.1.0 (Bruker Daltonik GmbH, Germany) in the Protim platform in Rennes, FR (Univ Rennes, CNRS, Inserm, Biosit UAR 3480 US\_S 018, Protim core facility, F-35000 Rennes, France). The instrument was set to a resolving power of 130,000 at  $m/z = 400$  in the positive or negative ion mode.

The Smartbeam-II laser focus was set to “small” (20–30 µm) and a spectrum was accumulated from 100 laser shots for each pixel. The laser was run at 1000 Hz, and the ions accumulated externally (hexapole) before being transferred into the ICR cell for a single scan. Every spectrum was internally calibrated by multipoint correction in positive ( $[C_{14}H_6O_6 + H]^+$   $m/z$  273.039364,  $[C_{37}H_{66}O_4 + H]^+$   $m/z$  575.503387,  $[C_{42}H_{80}NO_8P + H]^+$   $m/z$  758.569432,  $[C_{42}H_{82}NO_8P + K]^+$   $m/z$  796.525313,  $[C_{44}H_{84}NO_8P + K]^+$   $m/z$  824.556613, and  $[C_{46}H_{84}NO_8P + K]^+$   $m/z$  848.556613). Data were acquired in the  $m/z$  100–1200 mass range followed by single-zero filling and sinapodization. Image analysis and data visualization were performed with FlexImaging 5.0 software (Bruker Daltonik GmbH, Germany). The x–y raster width, defining the lateral resolution of ion images, was set to 50 µm. On-line feature reduction was performed by fmsControl to return only peak centroids and intensities and generate a peak list of the data in SQLite format.

### Lipid identification process : MALDI imaging analysis and metabolite annotation

After MALDI acquisition, the .mis files generated by FlexImaging from the sections were imported into the 2016b version of SCiLS Lab software (SCiLS, Bremen, Germany) using the SQLite peak list data. Analyzed sections were exported in imzML format using SCiLS Lab 2016b and submitted to the METASPACE molecular annotation engine (<http://annotate.metaspaces2020.eu/about,24>). Metabolite annotations were assigned from four different databases (HMDB-v2.5, HMDB-v4) on the basis of accurate mass and matched isotope distributions measured with a high-resolving mass spectrometer, leading to the calculation of a metabolite signal match (MSM) score. An MSM score cut-off was applied to reach a false discovery rate of < 10%. The correlation between the theoretical  $m/z$  of annotations provided by Metaspaces and experimental  $m/z$  of discriminant ions detected by SCiLS was performed on the basis of a  $\Delta m/z < 3$  ppm. When a  $\Delta m/z < 3$  ppm was observed between two annotations proposed by METASPACE, manual curation was performed by verifying the colocalization of the salt adducts ( $H^+$ ,  $Na^+$ , and  $K^+$ ).

Then the lipid families were identified in a lipidomic database “Lipid Maps” LMSD (LIPID MAPS® Structure Database, <https://www.lipidmaps.org/databases>) which is a relational database encompassing structures and annotations of biologically relevant lipids.

### RNA sequencing methods–group 2

#### RNA purification from formalin-fixed paraffin-embedded (FFPE) tissue sections and sequencing

Total RNA was extracted from newly cut 9–10 µm FFPE adjacent to unstained sections using the RNeasy FFPE kit (Qiagen, France) according to the manufacturer’s protocol using 4–6 sections per case depending on the different ROIs : Ac/ILF-, Ac/ILF+ and ELF.

RNA yield and quality were determined by UV absorption on a NanoDrop One spectrophotometer (ThermoScientific®). Approximately 25 µL of total RNA (1.5 ng/µL) from each sample was used for RNA Sequencing.

RNA library preparation followed manufacturer's instructions (SMARTer Stranded Total RNA-Seq Kit v3—Pico Input Mammalian from Takara).

Final samples pooled library prep were sequenced on ILLUMINA Novaseq 6000 with S1-200 cartridge ( $2 \times 1600$  Millions of 100 bases reads), corresponding to  $2 \times 38$  Millions of reads per sample after demultiplexing.

This work used equipment and services from the iGenSeq core facility (Genotyping and sequencing), at ICM (Institut du Cerveau et de la Moelle épinière, Paris).

### Bioinformatic and statistical analyzes of RNA-seq data

Raw RNA-seq reads were mapped to the human genome (Ensembl GRCH38) and Ensembl's reference transcriptome using STAR<sup>29</sup>. Gene counts were obtained using FeatureCount<sup>30</sup>, normalized by a UpperQuartile procedure, and logged on a base 2.

RNA-seq analyses were performed using the R statistical Software (Version 4.1.2; R Core team 2021), service provided by jr-analytics.fr. Genes from sexual chromosomes and genes with null variance were removed prior to normalization. Raw Gene expression profiles were normalized using the upper-quartile approach and  $\log_2 + 1$  transformed<sup>31</sup>.

The analysis strategy included unsupervised analysis such as Principal component analyses (PCA), as well as differential expression analysis. PCA were assessed using the 10 k genes with the highest variability across samples. Differential gene expression was estimated between groups and the statistical relevance evaluated with the Student t test. Gene set enrichment analysis (GSEA) was performed using fast GSEA implementation (<https://doi.org/10.18129/B9.bioc.fgsea>; Bioconductor, open source software)<sup>32</sup>, pre-ranked by the Student t test value from the studied comparison. Selected pathways were assessed for single samples GSEA, or Gene Set Variation Analysis (GSVA, <https://doi.org/10.18129/B9.bioc.GSVA>) and displayed as heatmaps. Independent component analyses were performed on 50% of the most variant genes from the “Acinar”- only samples or “Extralobular fat” samples separately, after gene-wise zero-centering (no unit scaling). Independent components (IC) with the strongest correlations to the presence of PanINs in histological samples, and OB vs. NOB patients were selected for further analyses. The GSEA analyses of each IC were assessed as previously described pre-ranked by each IC gene score.

A selection of significantly enriched gene sets was made between OB and NOB patients or between sample ROIs cases (Ac/ILF-, Ac/ILF+, ELF) from the GSEA databases.

### Immunohistochemical (IHC) analysis

We investigated the initial modifications that initiated precancerous lesions in the different ROIs of the exocrine pancreas.

Depending on the tissue that was available for full IHC analysis, tissue from 14 patients from group 2 (8 OB and 6 NOB) was selected for hematoxylin and eosin (H&E) slides then immunohistochemical analysis was performed on 4  $\mu$ m serial sections using an automated immunohistochemical stainer according to the manufacturer's instructions (Streptavidin-peroxidase protocol, BenchMark ULTRA, Roche®). Immunostaining was performed after dewaxing and rehydrating the slides obtained from formalin fixed and paraffine embedded samples. Antigen retrieval was performed by pretreatment at a high temperature at pH9 in TRIS Buffer. PBS was substituted for the primary antibody and used as a negative control. The slides were immunolabeled with monoclonal or polyclonal antibodies against the cytoplasmic acinar marker B-cell lymphoma 10 (BCL10, Santa Cruz Biotechnology, 1:300, sc-5273) co-immuno-stained with the nuclear ductal marker SRY-box transcription factor 9 (Sox9, Millipore, 1:600, ab5535), against the ductal marker cytokeratin 7 (CK7; Abcam, 1:400, ab125212), against alpha smooth muscle actin ( $\alpha$ SMA; Dako, 1:600, M851) to assess activation of pancreatic stellate cells and fibroblasts, against the T-cell marker CD8 (Dako, 1:50, M7103) and the macrophage marker CD163 (Leica, 1:100, NCL-CD163). Adjacent tissues were excluded from the IHC analysis. The size and number of ROI was the same in all sample.

Fifteen areas (202,500  $\mu\text{m}^2$ / area) of acinar tissue without ILF infiltration (Ac/ILF-) were randomly selected for each patient as “control acinar areas”, and all detectable ANs, defined by a loss of BCL10 and/or acquisition of CK7, were selected and analyzed. Immunostainings were quantified using QuPath® 0.3.2 software<sup>33</sup> to assess acinar (BCL10), ductal (SOX9 and CK7) and fibroblastic ( $\alpha$ SMA) marker expression in the control acinar areas and in AN. The total number of inflammatory cells (T lymphocytes and macrophages, CD8/CD163) was quantified throughout the parenchyma using HALO® software (v2.0.1061; 2016; Indica Labs, Inc. <https://www.indicalab.com/halo/>).

Statistical analyses were performed using Prism-GraphPad® software v.9.5.0.730 (GraphPad Software Inc, San Diego, CA, USA). The Mann Whitney test was performed to compare the number of precancerous lesions (AN, ADM and PanIN) per patient and the Fisher's exact test was performed on qualitative data (ILF, ELF and fibrosis scores).

### Data availability

RNA sequencing analysis: Raw count data are available in supplemental data.

Received: 24 October 2023; Accepted: 16 March 2024

Published online: 19 March 2024

### References

1. Maisonneuve, P. Epidemiology and burden of pancreatic cancer. *La Presse Médicale* **48**, e113–e123 (2019).
2. Rawla, P., Thandra, K. C. & Sunkara, T. Pancreatic cancer and obesity: Epidemiology, mechanism, and preventive strategies. *Clin. J. Gastroenterol.* **12**, 285–291 (2019).
3. Huang, J. *et al.* Worldwide burden of, risk factors for, and trends in pancreatic cancer. *Gastroenterology* **160**, 744–754 (2021).
4. Avgerinos, K. I. *et al.* Obesity and cancer risk: Emerging biological mechanisms and perspectives. *Metabolism* **92**, 121–135 (2019).



5. Renehan, A. G. *et al.* Body-mass index and incidence of cancer: a systematic review and meta-analysis of prospective observational studies. *Lancet* **371**, 569–578 (2008).
6. Liesenfeld, D. B. *et al.* Metabolomics and transcriptomics identify pathway differences between visceral and subcutaneous adipose tissue in colorectal cancer patients: The ColoCare study<sup>12</sup>. *Am. J. Clin. Nutr.* **102**, 433–443 (2015).
7. Durbec, J. P. & Sarles, H. Multicenter survey of the etiology of pancreatic diseases. Relationship between the relative risk of developing chronic pancreatitis and alcohol, protein and lipid consumption. *Digestion* **18**, 337–350 (1978).
8. Khasawneh, J. *et al.* Inflammation and mitochondrial fatty acid beta-oxidation link obesity to early tumor promotion. *Proc. Natl. Acad. Sci. USA* **106**, 3354–3359 (2009).
9. Guerra, C. *et al.* Chronic pancreatitis is essential for induction of pancreatic ductal adenocarcinoma by K-Ras oncogenes in adult mice. *Cancer Cell* **11**, 291–302 (2007).
10. Kopp, J. L. *et al.* Identification of Sox9-dependent acinar-to-ductal reprogramming as the principal mechanism for initiation of pancreatic ductal adenocarcinoma. *Cancer Cell* **22**, 737–750 (2012).
11. Chuvin, N. *et al.* Acinar-to-ductal metaplasia induced by transforming growth factor beta facilitates KRASG12D-driven pancreatic tumorigenesis. *Cell. Mol. Gastroenterol. Hepatol.* **4**, 263–282 (2017).
12. Shinozuka, H. *et al.* Multiple atypical acinar cell nodules of the pancreas. *Hum. Pathol.* **11**, 389–391 (1980).
13. Kodama, T. & Mori, W. Atypical acinar cell nodules of the human pancreas. *Pathol. Int.* **33**, 701–714 (1983).
14. Troxell, M. L. & Drachenberg, C. Allograft pancreas: Pale acinar nodules. *Human Pathol.* **54**, 127–133 (2016).
15. Rebours, V. *et al.* Obesity and fatty pancreatic infiltration are risk factors for pancreatic precancerous lesions (PanIN). *Clin. Cancer Res.* **21**, 3522–3528 (2015).
16. Butler, L. M. *et al.* Lipids and cancer: Emerging roles in pathogenesis, diagnosis and therapeutic intervention. *Adv. Drug. Deliv. Rev.* **159**, 245–293 (2020).
17. Le Faouder, J. *et al.* Imaging mass spectrometry provides fingerprints for distinguishing hepatocellular carcinoma from cirrhosis. *J. Proteome Res.* **10**, 3755–3765 (2011).
18. Hannich, J. T. *et al.* Ether lipids, sphingolipids and toxic 1-deoxyceramides as hallmarks for lean and obese type 2 diabetic patients. *Acta Physiologica* **232**, e13610 (2021).
19. Johnson, A. R., Milner, J. J. & Makowski, L. The inflammation highway: Metabolism accelerates inflammatory traffic in obesity. *Immunol. Rev.* **249**, 218–238 (2012).
20. Chang, M.-L. Fatty pancreas-centered metabolic basis of pancreatic adenocarcinoma: From obesity, diabetes and pancreatitis to oncogenesis. *Biomedicines* **10**, 692 (2022).
21. Sreedhar, U. L. *et al.* A systematic review of intra-pancreatic fat deposition and pancreatic carcinogenesis. *J. Gastrointest. Surg.* **24**, 2560–2569 (2020).
22. Morris, J. P. *et al.*  $\beta$ -catenin blocks Kras-dependent reprogramming of acini into pancreatic cancer precursor lesions in mice. *J. Clin. Invest.* **120**, 508–520 (2010).
23. Lodestijn, S. C. *et al.* Stem cells in the exocrine pancreas during homeostasis, injury, and cancer. *Cancers* **13**, 3295 (2021).
24. Anon. *Pathology of the Pancreas*. Available at: <https://link.springer.com/book/https://doi.org/10.1007/978-3-030-49848-1> [Accessed February 13, 2023].
25. Klöppel, G. & Maillet, B. Pseudocysts in chronic pancreatitis: A morphological analysis of 57 resection specimens and 9 autopsy pancreata. *Pancreas* **6**, 266–274 (1991).
26. Murphy, R. C. *et al.* MALDI imaging of lipids after matrix sublimation/deposition. *Biochim. Biophys. Acta* **1811**, 970–975 (2011).
27. Wattacheril, J. *et al.* Differential intrahepatic phospholipid zonation in simple steatosis and nonalcoholic steatohepatitis. *PLoS One* **8**, e57165 (2013).
28. Boskamp, T. *et al.* Using the chemical noise background in MALDI mass spectrometry imaging for mass alignment and calibration. *Anal Chem.* **92**, 1301–1308 (2020).
29. Dobin, A. *et al.* STAR: Ultrafast universal RNA-seq aligner. *Bioinformatics* **29**, 15–21 (2013).
30. Liao, Y., Smyth, G. K. & Shi, W. featureCounts: An efficient general purpose program for assigning sequence reads to genomic features. *Bioinformatics* **30**, 923–930 (2014).
31. Bullard, J. H. *et al.* Evaluation of statistical methods for normalization and differential expression in mRNA-Seq experiments. *BMC Bioinform.* **11**, 94 (2010).
32. Sergushichev, A. A. An algorithm for fast preranked gene set enrichment analysis using cumulative statistic calculation. 2016: 060012. Available at: <https://www.biorxiv.org/content/https://doi.org/10.1101/060012v1> [Accessed February 13, 2023].
33. Bankhead, P. *et al.* QuPath: Open source software for digital pathology image analysis. *Sci. Rep.* **7**, 16878 (2017).

## Author contributions

Sonia Frendi: Study design and concept, data acquisition, data analysis, manuscript drafting; Chloé Martineau, H el ene Cazier, Julie Le Faouder: data acquisition, data processing and manuscript revision. R emy Nicolle, Ana is Chassac, Miguel Albuquerque, J er ome Raffenne: data analysis and manuscript revision; Val erie Paradis: Critical revision; J er ome Cros, Anne Couvelard, Vinciane Rebours: Study design and concept, data analysis, manuscript drafting and critical revision.

## Funding

Fonds d'Aide Pour la Recherche et l'Evaluation en H epato-Gastroent erologie (FARE), Soci et e Nationale Fran aise d'H epato-Gastroent erologie, SNFGE. Programme d'actions int egr ees de recherche (PAIR), Canc erop ole, Institut national du cancer (INCA), La Ligue contre le cancer et La Fondation pour la recherche sur le cancer (ARC).

## Competing interests

The authors declare no competing interests.

## Additional information

**Supplementary Information** The online version contains supplementary material available at <https://doi.org/10.1038/s41598-024-57294-6>.

**Correspondence** and requests for materials should be addressed to V.R.

**Reprints and permissions information** is available at [www.nature.com/reprints](http://www.nature.com/reprints).

**Publisher's note** Springer Nature remains neutral with regard to jurisdictional claims in published maps and institutional affiliations.



**Open Access** This article is licensed under a Creative Commons Attribution 4.0 International License, which permits use, sharing, adaptation, distribution and reproduction in any medium or format, as long as you give appropriate credit to the original author(s) and the source, provide a link to the Creative Commons licence, and indicate if changes were made. The images or other third party material in this article are included in the article's Creative Commons licence, unless indicated otherwise in a credit line to the material. If material is not included in the article's Creative Commons licence and your intended use is not permitted by statutory regulation or exceeds the permitted use, you will need to obtain permission directly from the copyright holder. To view a copy of this licence, visit <http://creativecommons.org/licenses/by/4.0/>.

© The Author(s) 2024