



**HAL**  
open science

## Dissecting the molecular puzzle of the editosome core in Arabidopsis organelles

Kevin Baudry, Dario Monachello, Benoît Castandet, Wojciech Majeran, Claire Lurin

► **To cite this version:**

Kevin Baudry, Dario Monachello, Benoît Castandet, Wojciech Majeran, Claire Lurin. Dissecting the molecular puzzle of the editosome core in Arabidopsis organelles. *Plant Science*, 2024, 344, pp.112101. 10.1016/j.plantsci.2024.112101 . hal-04587619

**HAL Id: hal-04587619**

**<https://u-paris.hal.science/hal-04587619>**

Submitted on 24 May 2024

**HAL** is a multi-disciplinary open access archive for the deposit and dissemination of scientific research documents, whether they are published or not. The documents may come from teaching and research institutions in France or abroad, or from public or private research centers.

L'archive ouverte pluridisciplinaire **HAL**, est destinée au dépôt et à la diffusion de documents scientifiques de niveau recherche, publiés ou non, émanant des établissements d'enseignement et de recherche français ou étrangers, des laboratoires publics ou privés.



Distributed under a Creative Commons Attribution - NonCommercial 4.0 International License



## Dissecting the molecular puzzle of the editosome core in Arabidopsis organelles

Kevin Baudry<sup>a,b,\*</sup>, Dario Monachello<sup>a,b</sup>, Benoît Castandet<sup>a,b</sup>, Wojciech Majeran<sup>a,b</sup>,  
Claire Lurin<sup>a,b,\*\*</sup>

<sup>a</sup> Université Paris-Saclay, CNRS, INRAE, Université Evry, Institute of Plant Sciences Paris-Saclay (IPS2), Gif sur Yvette 91190, France

<sup>b</sup> Université Paris Cité, CNRS, INRAE, Institute of Plant Sciences Paris-Saclay (IPS2), Gif sur Yvette 91190, France

### ARTICLE INFO

#### Keywords:

Arabidopsis thaliana  
Chloroplast  
RNA editing  
PPR  
DYW domain

### ABSTRACT

Over the last decade, the composition of the C-to-U RNA editing complex in embryophyte organelles has turned out to be much more complex than first expected. While PPR proteins were initially thought to act alone, significant evidences have clearly depicted a sophisticated mechanism with numerous protein-protein interaction involving PPR and non-PPR proteins. Moreover, the identification of specific functional partnership between PPRs also suggests that, in addition to the highly specific PPRs directly involved in the RNA target recognition, non-RNA-specific ones are required. Although some of them, such as DYW1 and DYW2, were shown to be the catalytic domains of the editing complex, the molecular function of others, such as NUWA, remains elusive. It was suggested that they might stabilize the complex by acting as a scaffold. We here performed functional complementation of the *crr28-2* mutant with truncated CRR28 proteins mimicking PPR without the catalytic domain and show that they exhibit a specific dependency to one of the catalytic proteins DYW1 or DYW2. Moreover, we also characterized the role of the PPR NUWA in the editing reaction and show that it likely acts as a scaffolding factor. NUWA is no longer required for efficient editing of the CLB19 editing sites once this RNA specific PPR is fused to the DYW catalytic domain of its partner DYW2. Altogether, our results strongly support a flexible, evolutive and resilient editing complex in which RNA binding activity, editing activity and stabilization/scaffolding function can be provided by one or more PPRs.

### 1. Introduction

In embryophyte organellar transcripts, RNA editing specifically deaminates hundreds of cytidines into uridines. It is catalyzed by a protein complex called “editosome” that contains several members of various nuclear encoded protein families such as Pentatricopeptide Repeat (PPR), Multiple Organellar RNA editing Factor/RNA-editing factor Interacting Protein (MORF/RIP) or Organelle RNA Recognition Motif-containing (ORRM) proteins (Ichinose and Sugita, 2016; Sun et al., 2016; Takenaka et al., 2018; Yan et al., 2018). Among all these editing factors, the PPR proteins were shown to be the *trans* specificity factors that bind the RNA *cis* recognition elements, therefore allowing the specific targeting of the edited cytidines (Kotera et al., 2005; Okuda and Shikanai, 2012).

PPR proteins are part of the ‘ $\alpha$ -solenoid’ superfamily and are hypothesized to derive from Tetratricopeptide Repeat (TPR) proteins (Small and Peeters, 2000; Aubourg et al., 2000). They are characterized by repetitions of a degenerate 35 amino acid motif called the PPR motif. The PPR proteins can be classified in two groups based on the nature of their PPR motifs. When only canonic motifs (P motifs) are present, the proteins are called pure PPR defining the P subfamily. When motif variants are observed together with P motifs, the proteins are called PLS PPR proteins and the motifs are called “S motifs” for the smaller ones and “L motifs” for the longer ones. PPR proteins can specifically bind RNA in a 1 motif – 1 nucleotide interaction. The binding specificity is explained by a probabilistic degenerate code based on the 5th and 35th amino acid couple of each motif (Barkan et al., 2012; Yagi et al., 2013; Yin et al., 2013). Almost all PPR proteins involved in RNA editing are

\* Correspondence to: Boyce Thompson Institute, 533 Tower Rd, Ithaca, NY 14853, USA.

\*\* Correspondence to: INRAE, CODIR, 147 rue de l’université, Paris Cedex 07 75338, France.

E-mail addresses: [kb566@cornell.edu](mailto:kb566@cornell.edu) (K. Baudry), [claire.lurin@inrae.fr](mailto:claire.lurin@inrae.fr) (C. Lurin).

<sup>1</sup> Present address: Boyce Thompson Institute, Ithaca, NY 14853, USA.

<sup>2</sup> Present address: INRAE, CODIR, 147 rue de l’université, 75338, Paris Cedex 07, France.

<https://doi.org/10.1016/j.plantsci.2024.112101>

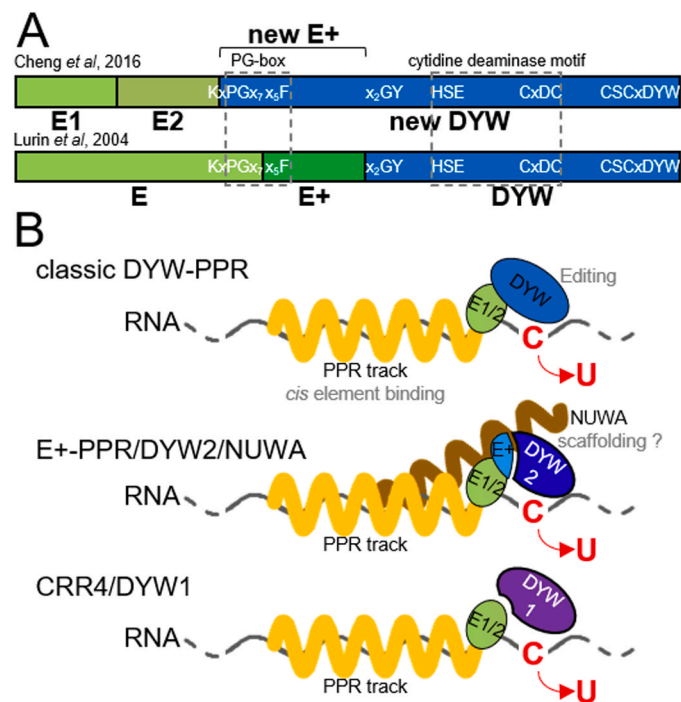
Received 18 January 2024; Received in revised form 15 April 2024; Accepted 16 April 2024

Available online 17 April 2024

0168-9452/© 2024 The Authors. Published by Elsevier B.V. This is an open access article under the CC BY-NC license (<http://creativecommons.org/licenses/by-nc/4.0/>).

members of the PLS subgroup and harbor additional C-terminal domains named E1, E2, E+ and DYW domains (Lurin et al., 2004; Cheng et al., 2016) (Fig. 1A).

Although the identity of the enzyme responsible for the deamination reaction has long remained elusive, it is now clear that the DYW domains at the C-terminus of some PPR proteins carry the catalytic activity. It was for example shown that two *Physcomitrium patens* DYW-PPRs (PpPPR56 and PpPPR71) truncated of their DYW domain ( $\Delta$ DYW-PPR) are unable to complement their respective mutants (Ichinose and Sugita, 2018). Another *Physcomitrium patens* DYW-PPR, PpPPR65, has been shown to be sufficient to drive editing of its cognate editing site in both *in vitro* assays and *in vivo* heterologous *E. coli* system (Oldenkott et al., 2019; Hayes and Santibanez, 2020). Moreover, point mutation within any of the DYW conserved deaminase signature motif and zinc binding domains strongly inhibits or abolishes *in vivo* editing efficiency (Hayes and Santibanez, 2020; Okuda et al., 2007; Salone et al., 2007; Iyer et al., 2011; Hayes et al., 2013; Boussardon et al., 2014; Wagoner et al., 2015). It also contains additional domains like the “PG-box”, a 15 amino acid motif encompassing the E and E+ domains according to the domain definition from Lurin et al. (2004), and is now included at the beginning of the DYW domain according to more recent definition (Cheng et al., 2016) (Fig. 1A). Finally, structural analyzes of the DYW domain of the plastid RNA editing factor ORGANELLE TRANSCRIPT PROCESSING 86 (OTP86) found it to be highly similar to those of classical cytidine deaminases with some additional specific features. It notably contains a gating domain between the PG-box and the cytidine deaminase motif that is likely involved in the regulation of the active site (Takenaka et al., 2021).



**Fig. 1. C-terminus domains of editing PPR and chloroplast core editosome models.** A) Comparison of C-terminus domain boundaries between Lurin et al. (2004) and Cheng et al. (2016). In the present work, the new E+ domain is defined as the N-terminus region of new DYW (from Chen et al., 2016) ending where old DYW (from Lurin et al., 2004) starts. B) In chloroplast, three editosome cores were described depending on the subfamily of the site specific PPR involved. Top, DYW-PPR proteins carry the domains required for site binding and editing in the same protein. Middle, an E+-PPR protein binds the site that is edited by a second PPR protein, DYW2. These two PPRs are bridged by a third PPR, NUWA. Bottom, CRR4 (E2-PPR) binds the site and recruits a second PPR, DYW1, to edit it.

Different from *P. patens*, many  $\Delta$ DYW-PPRs truncated proteins are however able to complement their respective mutants in Arabidopsis, suggesting a non-essential role of the DYW domain (Hayes et al., 2013; Wagoner et al., 2015; Okuda et al., 2009, 2010). This result is in agreement with the identification of numerous PPR editing factors that lack the DYW domain and belong to the E2- or E+-PPR subfamily, such as CHLOROPLAST BIOGENESIS 19 (CLB19) and SLOW GROWTH 2 (SLO2), respectively plastidial and mitochondrial E+-PPR proteins in *Arabidopsis thaliana* (Kotera et al., 2005; Chateigner-Boutin et al., 2008; Zhu et al., 2012). The apparent dispensability of the DYW domain in flowering plants remained a conundrum until the identification of a small group of atypical short DYW-PPRs, named DYW1-like proteins after DYW1, the first protein of the subfamily to be identified (Boussardon et al., 2012). In Arabidopsis, the six members of this group differ from classic DYW-PPR proteins by harboring very few PPR motifs (from 0 to 6) and non-canonic E1, E2 and E+ domains (Boussardon et al., 2012; Verbitskiy et al., 2012; Guillaumot et al., 2017). This led to a model in which each truncated PPR protein subfamily specifically recruits one of the members of the DYW1-like subfamily in order to reconstitute an active PPR-DYW with all the necessary domains (Boussardon et al., 2012; Guillaumot et al., 2017; Gutmann et al., 2017; Toma-Fukai et al., 2022) (Fig. 1B). It was shown for example that DYW1 interacts with CRR4 to edit the plastidial *ndhD\_117166* site (Boussardon et al., 2012), that all editing sites known to be depending on an E+-PPR also depend on DYW2 (Guillaumot et al., 2017; Andrés-Colás et al., 2017; Brehme et al., 2020; Malbert et al., 2020) and that MEF8/8S are recruited by all E2-PPR in mitochondria (Yang et al., 2022).

Finally, many additional, non PLS-PPR proteins, are known to be required for RNA editing, like the MORF proteins on one hand, and NUWA, DG409 and GRP23, three pure PPR proteins, on the other hand (Sun et al., 2016; Guillaumot et al., 2017; Yang et al., 2022; Bentolila et al., 2013; Wang et al., 2023). NUWA is hypothesized to be involved in the stabilization of the interaction between E+-PPR and DYW2 in maize and Arabidopsis and GRP23 in the stabilization of the interaction between E2-PPR, DYW-PPR and MORF proteins (Guillaumot et al., 2017; Andrés-Colás et al., 2017; Sun et al., 2018; Zhao et al., 2022). All these interactions are essential to RNA editing in flowering plants.

Here, we systematically tested the hypothesis that the interaction between DYW1-like proteins and E2/E+-PPR proteins reconstitutes an editing factor with both RNA binding and deaminase activities and that this interaction is supported by scaffolding proteins. We first show that the essential function of the PPR NUWA can be ascribed to its role in scaffolding the interaction between the RNA binding PPR CLB19 and the deaminating PPR DYW2. We then show that functional complementation of the *crr28-2* mutant (a plastidial DYW PPR) with truncated proteins mimicking either an E+- or E2-PPR are fully explained by their respective specific dependencies to DYW2 or DYW1. Our results strongly support a flexible and resilient editosome model, in which the binding of the *cis* recognition element and the cytidine deamination can be carried by one or several PPR as long as all the essential PPR editing domains (PPR tracks and DYW) are present in the editosome core.

## 2. Results

### 2.1. Plants expressing a CLB19-DYW2 fusion do not need NUWA to edit the CLB19 dependent editing sites

NUWA is believed to be a scaffolding protein that could specifically stabilize E+-PPR/DYW2 complexes. To test this hypothesis, we fused the DYW domain of DYW2 to the C-terminus of the E+ domain of CLB19, a plastidial E+-PPR that requires NUWA and DYW2 to efficiently edit its target sites, *clpP\_69942* and *rpoA\_78691*. To maximize the resemblance of this fusion with canonic DYW-PPRs, we aligned the C-termini of Arabidopsis E+-PPRs with DYW domains of DYW-PPRs (Fig. S1). Based on this alignment, we chose to remove the last 13 unconserved amino

acids of CLB19 and the 3 first amino acids of the DYW domain of DYW2 (Fig. 2A). Noteworthy, this fusion reconstitutes the conserved ‘GY’ motif within the DYW domain (Fig. 1A, Fig. S1). The CLB19-DYW2 fusion construct was then transformed into the homozygous *nuwa-2* mutant containing the pABI3::NUWA construct (hereafter called *nuwa<sub>ABI3</sub>*) previously obtained to bypass the *nuwa* embryo lethality (Guillaumot et al., 2017). Consistent with previously published results, the *rpoA*<sub>78691</sub> and *clpP*<sub>69942</sub> sites were 70–90 % edited in Col-0 and strongly inhibited in *nuwa<sub>ABI3</sub>* plants (Fig. 2B) (Guillaumot et al., 2017). Editing at both sites was partially restored to wild type levels in the *nuwa<sub>ABI3</sub>* lines complemented with CLB19-DYW2 (Fig. 2B, Fig. S2). Interestingly, moderated differences in editing levels were observed between lines that could not be linked to their expression level of the chimeric construct (Fig. S2). No increase in *clpP*<sub>69942</sub> and *rpoA*<sub>78691</sub> editing efficiency was observed in Col-0 plants expressing the CLB19-DYW2 fusion indicating that CLB19 and DYW2 expression level (and interaction) are not limiting factors of the editing efficiency in these wild-type plants and that additional factors are preventing the complete editing at these sites. This result suggests that the increase in editing efficiency observed in *nuwa* background was not due to the overexpression of the CLB19-DYW2 protein (Fig. 2B).

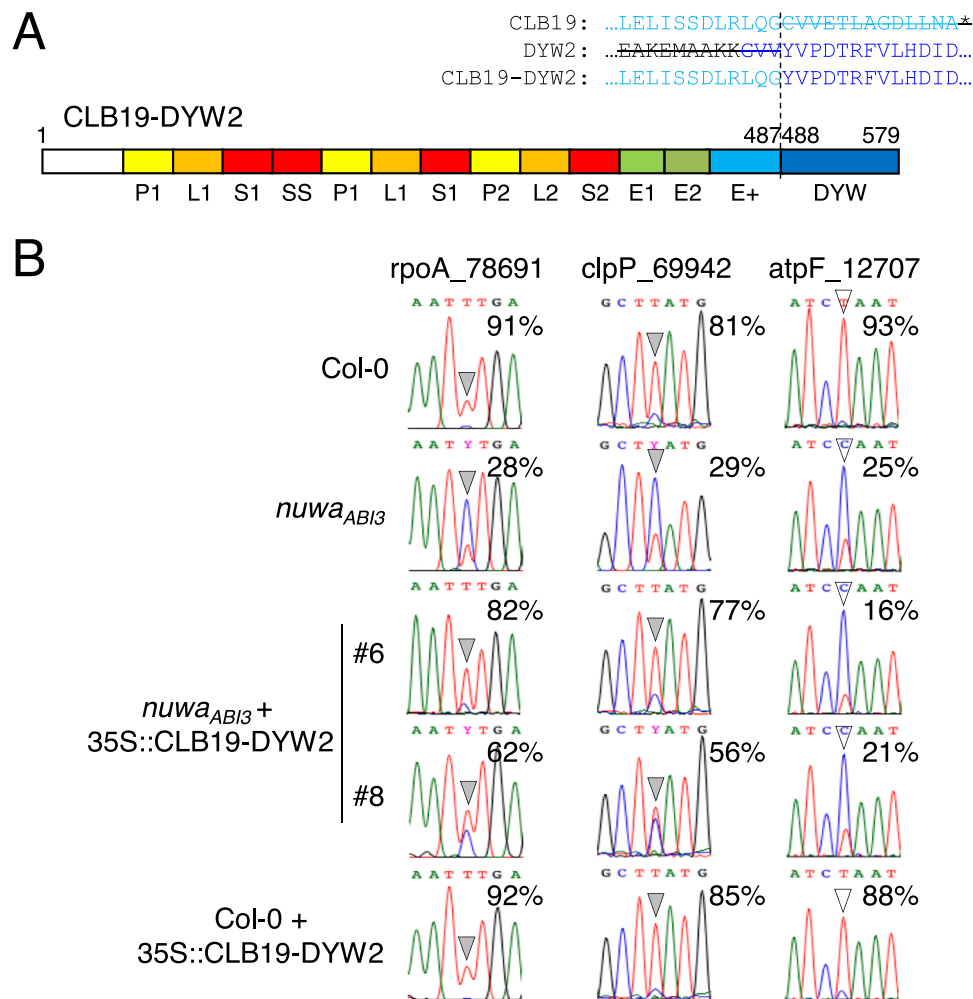
To evaluate the specificity of the complementation, we also analyzed

editing efficiency of the plastidial *atpF*<sub>12707</sub> site which is recognized by AEF1/MPR25, an E+-PPR (Yap et al., 2015) and is dependent on DYW2 and NUWA (Guillaumot et al., 2017) (Fig. 2B). Editing efficiency of the *atpF*<sub>12707</sub> site in the lines expressing the CLB19-DYW2 fusion was similar to that observed in *nuwa<sub>ABI3</sub>* plants (Fig. 2B), confirming that the increase of editing efficiency previously observed was restricted to the CLB19 editing sites.

Taken together, our results show that the NUWA protein is no longer required for the proper function of CLB19 and DYW2 proteins when they are fused together into the same protein. More generally, they suggest that an editing site depending on NUWA could become independent once its specific PPR carries a DYW domain.

## 2.2. Truncated versions of CRR28 are able to complement *crr28-2* mutant

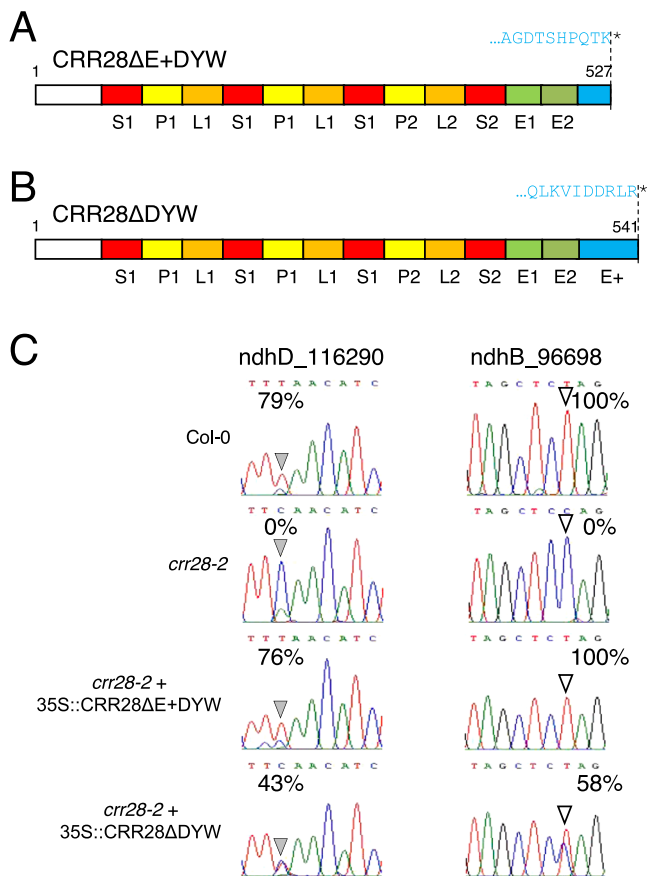
One hypothesis to explain that Arabidopsis DYW-PPRs truncated of their own DYW domain ( $\Delta$ DYW-PPRs) can complement their respective mutant is that they recruit in *trans* another DYW domain to perform deamination (Okuda et al., 2007; Hayes et al., 2013; Wagoner et al., 2015; Okuda et al., 2009, 2010). We therefore decided to investigate this hypothesis using two truncated versions of the DYW-PPR CRR28 that is required to edit the *ndhB*<sub>96698</sub> and *ndhD*<sub>116290</sub> sites in plastid



**Fig. 2. Complementation of the CLB19 editing sites by a CLB19-DYW2 fusion in the *nuwa-2* mutant.** A) CLB19-DYW2 protein architecture: PPR tract, E, and E+ domains from CLB19 are fused to the DYW domain of DYW2. Original PPR amino acid numbers are indicated above their boundaries. Fusion area is detailed above the protein scheme. B) Sanger sequencing traces of plastid editing sites in Col-0, *nuwa<sub>ABI3</sub>* mutant, two independent T2 lines expressing the CLB19-DYW2 fusion in the *nuwa<sub>ABI3</sub>* background and one T2 line expressing the CLB19-DYW2 fusion in the Col-0 background. Grey arrowheads (left and middle columns) show *rpoA*<sub>78691</sub> and *clpP*<sub>69942</sub> editing sites (depending on CLB19), white arrowheads (right column) show *atpF*<sub>12707</sub> editing site (depending on AEF1). Percentages of C-to-U editing are indicated beside each trace.

(Okuda et al., 2009). The first truncation, called CRR28 $\Delta$ E + DYW, was produced by removing the amino acids downstream the 27th amino acid of the CRR28 E+ domain (Fig. 3A). This was designed to mimic an E2-PPR similar to the CRR4 PPR protein, the only E2-PPR in Arabidopsis, whose C-terminal region extends 27 amino acids downstream of the E2 domain (Fig. S3). For the second truncated CRR28, called CRR28 $\Delta$ DYW, we removed the whole DYW domain (according to the old DYW domain definition (Lurin et al., 2004), Fig. 1) (Fig. 3B) to mimic an E+-PPR. The same construct has previously been produced by Okuda et al. (2009).

We then analyzed RNA editing efficiencies at the CRR28 editing sites in homozygous *crr28-2* mutant plants complemented by the truncated version of CRR28. As expected, editing at the two CRR28 sites was totally abolished in the mutant plants and restored to WT like levels in the CRR28 $\Delta$ E + DYW complemented lines (Fig. 3C, Fig. S4A). RNA editing was also restored in the CRR28 $\Delta$ DYW complemented lines albeit at a lower efficiency than in WT plants (Fig. 3C, Fig. S4B). It is worth noting that T1 plants showed a WT editing extent at *ndhD\_116290* site (Fig. S5) that was reduced in subsequent generations (F3 in Fig. 3C and Fig. S4B). Altogether, our results show that CRR28 truncations mimicking E+-PPR or E2 (CRR4 like) C-terminus are able to functionally replace CRR28 protein in the *crr28-2* mutant.



**Fig. 3. Complementation of the *crr28-2* mutant with truncated CRR28.** A) CRR28 $\Delta$ E+DYW protein architecture: CRR28 is truncated after the 27th amino acid of its E+ domain. The last 10 amino acids of the truncated protein are indicated above the protein scheme. B) CRR28 $\Delta$ DYW protein architecture: CRR28 is truncated at the end of the E+ domain. The last 10 amino acids of the truncated protein are indicated above the protein scheme. C) Sanger sequencing traces correspond to the CRR28 editing sites in Col-0, *crr28-2* mutant and *crr28-2* mutant expressing CRR28 $\Delta$ E+DYW or CRR28 $\Delta$ DYW constructs (F3 generation). Grey arrowheads (left column) show *ndhD\_116290* editing site, white arrowheads (right column) show *ndhB\_96698* editing site. Percentages of C-to-U editing are indicated beside each trace.

### 2.3. Truncated CRR28 proteins require DYW1 or DYW2 to edit CRR28 sites

Our hypothesis was that the restoration of the editing defects in the *crr28-2* mutant by the truncated CRR28 was due to their interactions with DYW1-like proteins. More specifically, CRR28 $\Delta$ DYW would require DYW2 because it is similar to an E+-PPR and CRR28 $\Delta$ E + DYW would require DYW1 because it mimics CRR4, the only Arabidopsis plastidial E2-PPR. We therefore crossed complemented *crr28-2* plants expressing either CRR28 $\Delta$ E + DYW or CRR28 $\Delta$ DYW constructs (T1) with the homozygous *dyw1-1* mutant or the heterozygous *dyw2-1* mutant expressing the pABI3::DYW2 construct, hereafter called *dyw2<sub>ABI3</sub>* (Guillaumot et al., 2017). We then quantified RNA editing at the CRR28 sites in the F3 generation plants.

As expected, the *dyw1-1* single mutant showed a wild-type editing efficiency at CRR28 sites (Fig. 4A, Fig. S6C) whereas editing of CRR28 sites was completely abolished in the *crr28 dyw1* double mutant (Fig. 4A, Fig. S6E). The CRR28 $\Delta$ E+DYW construct was not able to complement the editing defects of the CRR28 sites in the plants lacking both DYW1 and CRR28 (Fig. 4A, Fig. S4C). This indicates that the CRR28 $\Delta$ E + DYW protein requires the presence of DYW1 to be functional. On the other hand, the CRR28 $\Delta$ DYW construct displayed the same partial complementation in both the *crr28-2* and *crr28 dyw1* mutants (Fig. 4A, Fig. 3C, Fig. S4B, Fig. S4D), indicating that CRR28 $\Delta$ DYW does not require the DYW1 protein to edit the CRR28 sites.

Similarly, the *dyw2<sub>ABI3</sub>* mutant edited the CRR28 sites whereas editing was abolished in the *crr28 dyw2<sub>ABI3</sub>* double mutant (Fig. 4B, Fig. S6D, Fig. S6F). In plants lacking both DYW2 and CRR28 and expressing the CRR28 $\Delta$ DYW construct, editing defects were observed at both sites with a complete abolition of editing at the *ndhD\_116290* one (Fig. 4B, Fig. S4F). This indicates that CRR28 $\Delta$ DYW, similarly to what was previously described for all E+-PPR, is dependent on DYW2. The *crr28 dyw2<sub>ABI3</sub>* lines expressing CRR28 $\Delta$ E+DYW were, however, able to edit both editing sites at *dyw2<sub>ABI3</sub>* levels, demonstrating that CRR28 $\Delta$ E + DYW does not require DYW2 for its editing activity (Fig. 4B, Fig. S4E, Fig. S6D).

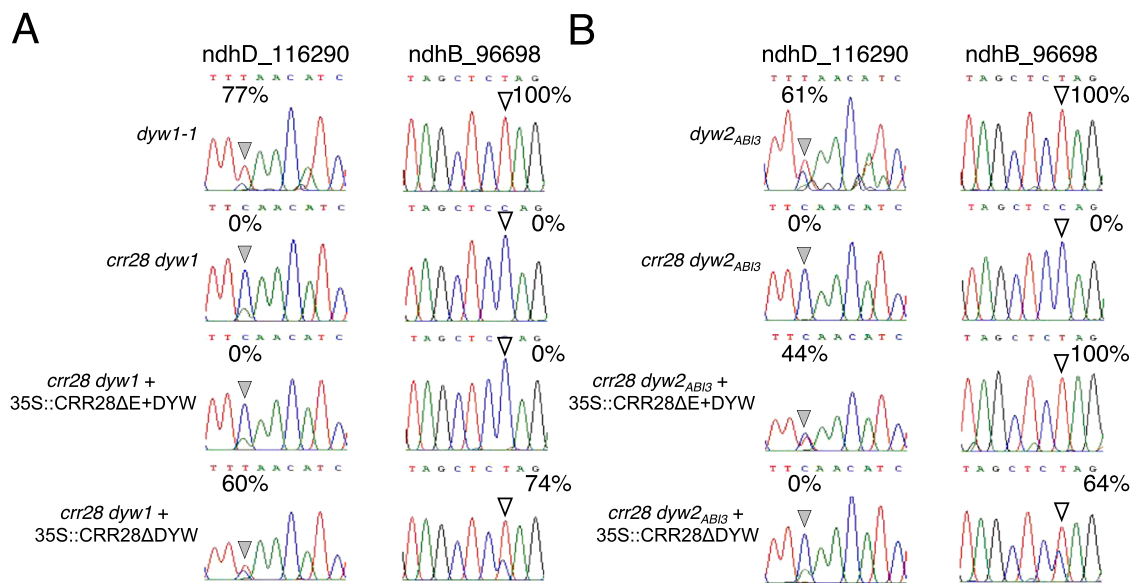
In summary, our results show that in order to complement the *crr28-2* editing defects, the CRR28 $\Delta$ E+DYW construct, mimicking the E2-PPR CRR4, requires the presence of DYW1 but does not depend on DYW2. In contrast, the CRR28 $\Delta$ DYW construct, mimicking an E+-PPR, needs the presence of DYW2 to edit the CRR28 sites but does not require the presence of DYW1.

## 3. Discussion

### 3.1. CRR28 deletions mimic PLS-DYW family evolution in Angiosperms

The origin and evolutionary history of DYW-PPR proteins is intimately linked to RNA editing (Gutmann et al., 2020). The association on a single protein of both a specific RNA binding domain (the PPR track) and a deamination domain (the DYW deaminase) allows the precise selection and deamination of the cytosines that require editing. As an illustration, all the editing sites in the moss *Physcomitrium patens* have been attributed to individual DYW PPR proteins (Hein and Knoop, 2018). The situation is however more complex in vascular plants where the DYW domains of some editing factors have been shown to be dispensable for the deamination reaction. Additionally, several editing factors do not bear a DYW domain and belong to the E2- and E+-PPRs family, suggesting dissociation between the RNA binding and deamination activities necessary to the reaction. This idea is supported by the identification of the DYW1-like proteins that are short PPR proteins which only harbor the deaminase domain and can interact with non DYW PPR to perform RNA editing. This model is perfectly illustrated by the interaction between the E2-PPR CRR4 and DYW1 in Arabidopsis (Boussard et al., 2012).

According to this hypothesis, the possibility of an interaction with



**Fig. 4. Editing efficiencies in plants expressing truncated CRR28 in absence of DYW1 or DYW2.** Sanger sequencing traces correspond to the CRR28 editing sites in F3 plants obtained after crossing a *crr28-2* complemented lines with the *dyw1-1* (A) or the *dyw2<sub>ABI3</sub>* (B) mutants. Single *dyw1-1* or *dyw2<sub>ABI3</sub>* mutants are displayed on the first row, double mutants expressing no truncated PPR on the second row, double mutants expressing the CRR28ΔE+DYW constructs on the third row and finally double mutants expressing the CRR28ΔDYW constructs on the last row. Grey arrowheads (left columns) show *ndhD\_116290* editing site, white arrowheads (right columns) show *ndhB\_96698* editing site. Percentages of C-to-U editing are indicated beside each trace.

DYW1-like proteins allowed the apparition of the E2- and E+-PPR subfamily in vascular plants, following the loss or degeneration of their DYW (then their E+) domains. In this model, a PPR harboring a DYW domain in an organism could lose it in another organism. Such a situation has been reported for CRR28: while it is a DYW-PPR protein in Arabidopsis, orthologs in *Lactuca sativa* and *Cynara cardunculus* are E+-PPR lacking a DYW domain (Hein and Knoop, 2018). We therefore decided to put this model to test by artificially recreating CRR28 proteins devoid of their DYW domains and systematically test their dependency on DYW1-like proteins to perform editing. Our two deletions of the PPR-DYW CRR28 protein mimic the loss of domains in E+-PPRs and the plastidial E2-PPR CRR4 during evolution. They were introduced in the *crr28* mutants no longer expressing either DYW1 or DYW2 to test their requirement for these proteins (Fig. 3, Fig. 4).

### 3.2. PPRs without DYW domain are depending on DYW1-like members

This approach led to the conclusion that CRR28ΔE+DYW harboring a “half” E+ at its C-terminus has exactly the same behavior as CRR4 and is depending on DYW1 (Fig. 4). Similarly, we showed that CRR28ΔDYW is behaving exactly as every other studied E+-PPRs and that its RNA editing activity relies on DYW2. Although E+-PPRs are all depending on DYW2, many E+-PPR editing sites were shown to be still partially edited in the *dyw2<sub>ABI3</sub>* mutant (Guillaumot et al., 2017). Similarly, a single E+-PPR could impact its multiple target sites with different efficiency in the *dyw2<sub>ABI3</sub>* mutant (Guillaumot et al., 2017; Malbert et al., 2020). This is exactly the behavior we observed in the *crr28 dyw2<sub>ABI3</sub>* + CRR28ΔDYW line, where editing at the *ndhD* site is completely abolished while the *ndhB* site is only partially affected (Fig. 4). Noticeably, two populations were observed among the F3 generation of *crr28 dyw2<sub>ABI3</sub>* + CRR28ΔE+DYW plants, one exhibiting better editing efficiencies than the other (Fig. S4E). Although the rationale behind these discrepancies is not clear, a plausible explanation could lie in the genetic complexity of our lines and in transgene silencing.

It is worth noting that CRR28ΔE + DYW is only 14 amino acids shorter than CRR28ΔDYW. It is therefore the absence of these 14 amino acids that determines the specific requirement of DYW1 versus DYW2. A simple explanation would be that the 14 amino acids determine the

structural reconstitution of the DYW active site as suggested by Yang et al. (2022), an hypothesis that would require structural characterization of truncated PPRs interacting with DYW1 or DYW2 to be confirmed. Alternatively, scaffolding proteins like NUWA and GRP23 (see below) might also be involved in this specificity. The fact that we could identify orthologs of DYW2 (LsDYW2: XP\_023754705.1; CcDYW2: XP\_024959394.1) and NUWA (LsNUWA: XP\_023756944.1; CcNUWA: XP\_024970526.1) in *L. sativa* and *C. cardunculus*, the two plants that contain truncated versions of CRR28 (Fig. S7) is in agreement with this possibility.

### 3.3. DYW domain specificity did not affect the complementation experiments

Several authors have recently described that the DYW domain of PPR proteins could be involved in the specificity of editing sites. This is the case, for example, in *Physcomitrium* where DYW domains are functionally different between PpPPR56 and other mitochondrial PPR editing factors, and in which residues 37–42 are involved in site-specific editing (Ichinose and Sugita, 2018). Maeda et al. (2022) using *E. coli* RNA editing system and Arabidopsis/*Physcomitrium* chimeric proteins, proposed that each DYW domain shows a distinct preference for neighboring nucleotides of the target site and thus participate in the editing specificity. DYW domains can also have a long-range impact on RNA recognition (Yang et al., 2023) and it was proposed that fine-tuning of the target specificity can be modulated by the DYW domain itself (Bayer-Császár et al., 2023). This selectivity of some of the DYW domains could theoretically have complicated our domain complementation model and impaired our CRR28 protein deletion assays. Nevertheless, no such effect was observed in our experiments. In contrast, while DYW1 has been described to have a small preference for the *ndhD\_116290* site (UCA triplet) over the *ndhB\_96698* (CCA triplet) (Maeda et al., 2022) a better editing efficiency was observed at the *ndhB\_96698* site in all our experiments (Fig. 3).

### 3.4. NUWA, a protein scaffold stabilizing DYW2 and E+-PPR interactions

Pure PPR proteins like NUWA and GRP23 have been proposed to be scaffolding proteins in the editosome, helping to maintain the functional interactions between the partners (Guillaumot et al., 2017; Gutmann et al., 2017; Andrés-Colás et al., 2017; Yang et al., 2022). In our experiment, the interaction between the truncated CRR28 and the DYW1-like proteins could for example be facilitated by these proteins. We tested this hypothesis using another plastidial E+-PPR, CLB19, to investigate whether NUWA is still required to edit E+-PPR sites when the E+-PPR protein is fused to a DYW domain. If the role of NUWA was to allow the interaction between the PPR protein bringing the RNA binding domain and the DYW1-like protein bringing the deaminase activity, it should therefore become dispensable when the two domains are carried by a single protein. In absence of NUWA, CLB19 and DYW2 are not able to efficiently edit CLB19 sites leading to a partial editing defect in the *nuwa<sub>ABI3</sub>* mutant. In contrast, in the same *nuwa<sub>ABI3</sub>* background, a fusion between CLB19 and the DYW domain of DYW2 is able to edit CLB19 sites, indicating that editing has become independent of the NUWA protein (Fig. 2). This result clearly supports the scaffold function of NUWA as a stabilizer of the E+-PPR/DYW2 interactions. Another PPR with a scaffolding function similar to NUWA has recently been described, indicating that this mechanism might be a general feature of the plant editosome (Yang et al., 2022).

### 3.5. Toward a global model for the editosome core

PPR editing factors were first thought to be acting in a one PPR/one editing site fashion, without interacting with any other protein. Then, a more complex model for the editosome emerged (Sun et al., 2016; Takenaka et al., 2018) in which the PPR tract of the PPR protein, helped by other proteins such as MORF/RIP proteins (Yan et al., 2017; Royan et al., 2021), selectively binds the *cis* element surrounding the RNA editing site and the E+/DYW domain performs the cytidine-to-uracil editing reaction. Additionally, the E1/E2 domain is also involved in RNA binding (Ruwe et al., 2019), protein-protein interactions with other editosome components (Bayer-Császár et al., 2017) and participates to the active site (Takenaka et al., 2021; Toma-Fukai et al., 2022).

Finally, seminal works on DYW1-like proteins (Boussardon et al., 2012; Verbitskiy et al., 2012; Guillaumot et al., 2017; Andrés-Colás et al., 2017; Yang et al., 2022; Sun et al., 2018; Diaz et al., 2017) suggested that the functions carried by the PPR proteins could be split between several individual proteins that could then be assembled to recreate a true bona fide editing factor. Our results are clearly in favor of this even more complex editosome in which highly specific interactions between a site-recognition PPR lacking the deamination C-terminal part and a short DYW1-like PPR would enable the structural and molecular reconstitution of the active site of full-length DYW-PPR. The appearance of the small DYW1-like subfamily in the vascular plants probably increased the resilience and flexibility of the molecular editing machinery by allowing the appearance and maintenance of C-terminal deletions that occurred during the gene rearrangements observed with the very rapid expansion of the family (Rivals et al., 2006; O'Toole et al., 2008). These interactions are then made possible by the action of scaffolding proteins whose precise mode of action still remain to be elucidated.

## 4. Experimental procedures

### 4.1. Plant material

T-DNA mutant *crr28-2* (SALK\_115133) was previously described in Okuda et al., 2009 (Okuda et al., 2009) and was ordered from the NASC (Nottingham Arabidopsis Stock Centre) (Scholl et al., 2000). Tilling mutant *dyw1-1* (G262:) was previously described in Boussardon et al.

(2012). Embryo complemented mutant *dyw2<sub>ABI3</sub>* and *nuwa<sub>ABI3</sub>* were generated and described in Guillaumot et al. (2017), they correspond to *dyw2-1* (GK\_332A07) + pABI3::DYW2 mutant and *nuwa-2* (SAIL\_784\_A11) + pABI3::NUWA mutant, respectively. Plants were grown at 20 °C constant temperature under long day conditions (16 h light/day). For RNA extraction, leaves were harvested after 3 weeks of culture for all genotypes, with the exception of *dyw2* genotypes which were harvested after 5 weeks.

### 4.2. PPR ORF cloning, plant transformation and crossing

Sequences coding for CRR28 truncated versions surrounded by Gateway *attB* recombination sites were synthesized by Twist BioScience company (San Francisco, US). CRR28ΔDYW corresponds to the CRR28 541 first amino acids until the end of the E+ domain and CRR28ΔE + DYW corresponds to the CRR28 527 first amino acids until the 27th amino acid of the E+ domain. The CLB19-DYW2 fusion was constructed by combining PCR products corresponding to *CLB19* ORF (1–487, encoding the full-length protein without the last 13 amino acids of the E+ domain) and the sequence encoding the DYW domain of DYW2 (488–579, corresponding to the DYW domain without its 3 first amino acids). PPR ORFs were cloned into the pDONR207 vector using Gateway BP clonase enzyme (Invitrogen), then subcloned using Gateway LR clonase enzyme (Invitrogen) into the pGWB2 vector (Nakagawa et al., 2007) that allows expression under the 35S promoter without any tag. Homozygous *nuwa<sub>ABI3</sub>* or *crr28-2* plants were transformed using C58C1 pMP90 *Agrobacterium tumefaciens* by floral dip (Clough and Bent, 1998) and selected on half MS (Duchefa MO0221.0050) media containing 50 µg/mL of Kanamycin and 25 µg/mL of Hygromycin B. Following transfer in soil, selected plants were genotyped and analyzed for their ability to restore editing defects. Editing analysis was performed on T1 or T2 plants transformed with CLB19-DYW2 fusion. Complemented *crr28-2* T1 were crossed with *dyw1-1* or *dyw2<sub>ABI3</sub>* mutants and F2 and F3 generations were obtained in order to identify specific genotypes. Editing analysis was performed on F3 segregating plants. Primers used for the genotyping and cloning are listed in Table S1.

### 4.3. RNA extraction, gene expression and RNA editing analysis

Leaf total RNA was extracted using the NucleoZOL protocol (Macherey-Nagel) followed by RNA purification using Agencourt RNA Clean XP beads (Beckman-Coulter). cDNA was synthesized from 100 ng of total RNA using SuperScript II (Invitrogen). After RT-PCR with primers surrounding editing sites, products were sequenced by the Eurofins company. CLB19-DYW2 gene expression in T1 plants was measured by RT-qPCR using Premix Ex Taq (Takara). For each plant, the mean expression level of three technical RT-qPCR replicates was normalized with the mean of *actin2-8* expression, used as reference gene. All primers used in this study are provided in the Table S1.

For the editing analysis of the CRR28 sites, editing was assayed in at least 3 plants of each genotype among the F3 generation. Only traces from the plants exhibiting the highest editing efficiencies are displayed in the Figs. 3 and 4. All the other traces for every genotype are displayed in Supplemental figures (Fig. S4, Fig. S6).

## Fundings

K. B. research was supported by a French Ph. D. fellowship from “Ministère de la Recherche et de l'Enseignement Supérieur”. The IPS2 benefited from the support of the Labex Saclay Plant Sciences-SPS (ANR-17-EUR-0007).

## Accession numbers

*CLB19* (At1g05750), *CRR28* (At1g59720), *DYW1* (At1g47580),

DYW2 (At2g15690), NUWA (At3g49240)

## Supporting Information

This article contains supporting information.

## Author Contributions

C. L., K. B. and W. M. designed the research and supervised the experiments; K. B., D. M. and C. L. performed experiments; K. B., B. C., W. M. and C. L. wrote the manuscript.

## CRedit authorship contribution statement

**Wojciech Majeran:** Writing – review & editing, Supervision. **Benoît Casterand:** Writing – review & editing. **Claire Lurin:** Writing – review & editing, Writing – original draft, Supervision, Methodology, Investigation, Funding acquisition, Conceptualization. **Dario Monachello:** Resources, Investigation. **Kevin Baudry:** Writing – original draft, Methodology, Investigation, Funding acquisition, Conceptualization.

## Declaration of Competing Interest

The authors declare that they have no known competing financial interests or personal relationships that could have appeared to influence the work reported in this paper.

## Data availability

No data was used for the research described in the article.

## Appendix A. Supporting information

Supplementary data associated with this article can be found in the online version at [doi:10.1016/j.plantsci.2024.112101](https://doi.org/10.1016/j.plantsci.2024.112101).

## References

- N. Andrés-Colás, Q. Zhu, M. Takenaka, B. De Rybel, D. Weijers, D. Van Der Straeten, Multiple PPR protein interactions are involved in the RNA editing system in *Arabidopsis* mitochondria and plastids, *Proc. Natl. Acad. Sci. USA* 114 (2017) 201705815, <https://doi.org/10.1073/pnas.1705815114>.
- S. Aubourg, N. Boudet, M. Kreis, A. Lecharny, In *Arabidopsis thaliana*, 1 % of the genome codes for a novel protein family unique to plants, *Plant Mol. Biol.* 42 (2000) 603–613, <https://doi.org/10.1023/A:1006352315928>.
- A. Barkan, M. Rojas, S. Fujii, A. Yap, Y.S. Chong, C.S. Bond, I. Small, A combinatorial amino acid code for RNA recognition by pentatricopeptide repeat proteins, *PLoS Genet.* 8 (2012) 4–11, <https://doi.org/10.1371/journal.pgen.1002910>.
- E. Bayer-Czászár, S. Haag, A. Jörg, F. Glass, B. Härtel, T. Obata, E.H. Meyer, A. Brennicke, M. Takenaka, The conserved domain in MORF proteins has distinct affinities to the PPR and E elements in PPR RNA editing factors, *Biochim. Biophys. Acta - Gene Regul. Mech.* 1860 (2017) 813–828, <https://doi.org/10.1016/j.bbgrm.2017.05.004>.
- E. Bayer-Czászár, A. Jörg, B. Härtel, A. Brennicke, M. Takenaka, The gating domain of MEF28 is essential for editing two contiguous cytidines in *nad2* mRNA in *Arabidopsis thaliana*, *Plant Cell Physiol.* (2023), <https://doi.org/10.1093/pcp/pcad087>.
- S. Bentolila, J. Oh, M.R. Hanson, R. Bukowski, Comprehensive high-resolution analysis of the role of an *Arabidopsis* gene family in RNA editing, *PLoS Genet.* 9 (2013), <https://doi.org/10.1371/journal.pgen.1003584>.
- C. Boussardon, A. Avon, P. Kindgren, C.S. Bond, M. Challenor, C. Lurin, I. Small, The cytidine deaminase signature HxE(x)nCxxC of DYW1 binds zinc and is necessary for RNA editing of *ndhD-1*, *New Phytol.* (2014), <https://doi.org/10.1111/nph.12928>.
- C. Boussardon, V. Salone, A. Avon, R. Berthome, K. Hammani, K. Okuda, T. Shikanai, I. Small, C. Lurin, Two interacting proteins are necessary for the editing of the *NdhD-1* site in *Arabidopsis* plastids, *Plant Cell* 24 (2012) 3684–3694, <https://doi.org/10.1105/tpc.112.099507>.
- N. Brehme, F. Glass, A. Jörg, M. Takenaka, MEF46 and MEF47 are novel specificity factors for RNA editing sites in mitochondrial *nad* transcripts, *Mitochondrion* 53 (2020) 121–127, <https://doi.org/10.1016/j.mito.2020.05.002>.
- A.L. Chateigner-Boutin, M. Ramos-Vega, A. Guevara-Garcia, C. Andres, M.D.L. Gutierrez-Nava, A. Cantero, E. Delannoy, L.F. Jimenez, C. Lurin, I. Small, P. Leon, CLB19, a pentatricopeptide repeat protein required for editing of *rpoA* and *clpP* chloroplast transcripts, *Plant J.* (2008), <https://doi.org/10.1111/j.1365-313X.2008.03634.x>.
- S. Cheng, B. Gutmann, X. Zhong, Y. Ye, M.F. Fisher, F. Bai, I. Castleden, Y. Song, B. Song, J. Huang, X. Liu, X. Xu, B.L. Lim, C.S. Bond, S.M. Yiu, I. Small, Redefining the structural motifs that determine RNA binding and RNA editing by pentatricopeptide repeat proteins in land plants, *Plant J.* 85 (2016) 532–547, <https://doi.org/10.1111/tj.13121>.
- S.J. Clough, A.F. Bent, Floral dip: a simplified method for *Agrobacterium*-mediated transformation of *Arabidopsis thaliana*, *Plant J.* 16 (1998) 735–743, <https://doi.org/10.1046/j.1365-313x.1998.00343.x>.
- M.F. Diaz, S. Bentolila, M.L. Hayes, M.R. Hanson, R.M. Mulligan, A protein with an unusually short PPR domain, MEF8, affects editing at over 60 *Arabidopsis* mitochondrial C targets of RNA editing, *Plant J.* 92 (2017) 638–649, <https://doi.org/10.1111/tj.13709>.
- D. Guillaumot, M. Lopez-Obando, K. Baudry, A. Avon, G. Rigault, A. Falcon de Longevialle, B. Broche, M. Takenaka, R. Berthomé, G. De Jaeger, E. Delannoy, C. Lurin, Two interacting PPR proteins are major *Arabidopsis* editing factors in plastid and mitochondria, *Proc. Natl. Acad. Sci. USA* 114 (2017) 201705780, <https://doi.org/10.1073/pnas.1705780114>.
- B. Gutmann, S. Royan, I. Small, Protein complexes implicated in RNA editing in plant organelles, *Mol. Plant* 10 (2017) 1255–1257, <https://doi.org/10.1016/j.molp.2017.09.011>.
- B. Gutmann, S. Royan, M. Schallenberg-Rüdinger, H. Lenz, I.R. Castleden, R. McDowell, M.A. Vacher, J. Tonti-Filippini, C.S. Bond, V. Knoop, I.D. Small, The expansion and diversification of pentatricopeptide repeat RNA-editing factors in plants, *Mol. Plant* 13 (2020) 215–230, <https://doi.org/10.1016/j.molp.2019.11.002>.
- M.L. Hayes, K. Giang, B. Berhane, R.M. Mulligan, Identification of two pentatricopeptide repeat genes required for rna editing and zinc binding by c-terminal cytidine deaminase-like domains, *J. Biol. Chem.* 288 (2013) 36519–36529, <https://doi.org/10.1074/jbc.M113.485755>.
- M.L. Hayes, P.I. Santibanez, A plant pentatricopeptide repeat protein with a DYW-deaminase domain is sufficient for catalyzing C-to-U RNA editing in vitro, *J. Biol. Chem.* 295 (2020) 3497–3505, <https://doi.org/10.1074/jbc.RA119.011790>.
- A. Hein, V. Knoop, Expected and unexpected evolution of plant RNA editing factors CLB19, CRR28 and RARE1: retention of CLB19 despite a phylogenetically deep loss of its two known editing targets in Poaceae, *BMC Evol. Biol.* 18 (2018) 85, <https://doi.org/10.1186/s12862-018-1203-4>.
- M. Ichinose, M. Sugita, RNA editing and its molecular mechanism in plant organelles, *Genes* 8 (2016) 5, <https://doi.org/10.3390/genes8010005>.
- M. Ichinose, M. Sugita, The DYW domains of pentatricopeptide repeat RNA editing factors contribute to discriminate target and non-target editing sites, *Plant Cell Physiol.* 59 (2018) 1652–1659, <https://doi.org/10.1093/pcp/pcy086>.
- L.M. Iyer, D. Zhang, I.B. Rogozin, L. Aravind, Evolution of the deaminase fold and multiple origins of eukaryotic editing and mutagenic nucleic acid deaminases from bacterial toxin systems, *Nucleic Acids Res.* 39 (2011) 9473–9497, <https://doi.org/10.1093/nar/gkr691>.
- E. Kotera, M. Tasaka, T. Shikanai, A pentatricopeptide repeat protein is essential for RNA editing in chloroplasts, *Nature* 433 (2005), <https://doi.org/10.1038/nature03228.1>.
- C. Lurin, C. André, S.B. Aubourg, M. Bellaoui, F. Dé Rique Bitton, C. Mence Bruyè Re, M. Caboche, C.D. Debast, J. Gualberto, B. Hoffmann, A. Lecharny, M. Le Ret, M.-L. Martin-Magniette, H. Mireau, N. Peeters, J.-P. Renou, B. Szurek, L. Taconnat, I. Small, Genome-wide analysis of *Arabidopsis* pentatricopeptide repeat proteins reveals their essential role in organelle biogenesis, *Plant Cell* 16 (2004), <https://doi.org/10.1105/tpc.104.022236> (2009–2013).
- A. Maeda, S. Takenaka, T. Wang, B. Frink, T. Shikanai, M. Takenaka, DYW deaminase domain has a distinct preference for neighboring nucleotides of the target RNA editing sites, *Plant J.* (2022) 1–12, <https://doi.org/10.1111/tj.15850>.
- B. Malbert, M. Burger, M. Lopez-Obando, K. Baudry, A. Launay-Avon, B. Härtel, D. Verbitskiy, A. Jörg, R. Berthomé, C. Lurin, M. Takenaka, E. Delannoy, The analysis of the editing defects in the *dyw2* mutant provides new clues for the prediction of RNA targets of *Arabidopsis* E+T-class PPR proteins, *Plants* 9 (2020) 280, <https://doi.org/10.3390/plants9020280>.
- T. Nakagawa, T. Kurose, T. Hino, K. Tanaka, M. Kawamukai, Y. Niwa, K. Toyooka, K. Matsuoka, T. Jinbo, T. Kimura, Development of series of gateway binary vectors, pGWBS, for realizing efficient construction of fusion genes for plant transformation, *J. Biosci. Bioeng.* 104 (2007) 34–41, <https://doi.org/10.1263/jbb.104.34>.
- N. O'Toole, M. Hattori, C. Andres, K. Iida, C. Lurin, C. Schmitz-Linneweber, M. Sugita, I. Small, On the expansion of the pentatricopeptide repeat gene family in plants, *Mol. Biol. Evol.* 25 (2008) 1120–1128, <https://doi.org/10.1093/molbev/msn057>.
- K. Okuda, A.-L. Chateigner-Boutin, T. Nakamura, E. Delannoy, M. Sugita, F. Myouga, R. Motohashi, K. Shinozaki, I. Small, T. Shikanai, Pentatricopeptide repeat proteins with the DYW motif have distinct molecular functions in RNA editing and RNA cleavage in *Arabidopsis* chloroplasts, *Plant Cell* 21 (2009) 146–156, <https://doi.org/10.1105/tpc.108.064667>.
- K. Okuda, K. Hammani, S.K. Tanz, L. Peng, Y. Fukao, F. Myouga, R. Motohashi, K. Shinozaki, I. Small, T. Shikanai, The pentatricopeptide repeat protein OTP82 is required for RNA editing of plastid *ndhB* and *ndhG* transcripts, *Plant J.* 61 (2010) 339–349, <https://doi.org/10.1111/j.1365-313X.2009.04059.x>.
- K. Okuda, F. Myouga, R. Motohashi, K. Shinozaki, T. Shikanai, R. Haselkorn, Conserved domain structure of pentatricopeptide repeat proteins involved in chloroplast RNA editing, *Proc. Natl. Acad. Sci. USA* 104 (2007) 8178–8183, <https://doi.org/10.1073/pnas.0700865104>.
- K. Okuda, T. Shikanai, A pentatricopeptide repeat protein acts as a site-specificity factor at multiple RNA editing sites with unrelated cis-acting elements in plastids, *Nucleic Acids Res.* 40 (2012) 5052–5064, <https://doi.org/10.1093/nar/gks164>.
- B. Oldenkott, Y. Yang, E. Lesch, V. Knoop, M. Schallenberg-Rüdinger, Plant-type pentatricopeptide repeat proteins with a DYW domain drive C-to-U RNA editing in



- Escherichia coli*, *Commun. Biol.* 2 (2019) 85, <https://doi.org/10.1038/s42003-019-0328-3>.
- E. Rivals, C. Bruyère, C. Toffano-Nioche, A. Lecharny, Formation of the Arabidopsis pentatricopeptide repeat family, *Plant Physiol.* 141 (2006) 825–839, <https://doi.org/10.1104/pp.106.077826>.
- S. Royan, B. Gutmann, C. Colas des Francs-Small, S. Honkanen, J. Schmidberger, A. Soet, Y.K. Sun, L. Vincis Pereira Sanglard, C.S. Bond, I. Small, A synthetic RNA editing factor edits its target site in chloroplasts and bacteria, *Commun. Biol.* 4 (2021) 545, <https://doi.org/10.1038/s42003-021-02062-9>.
- H. Ruwe, B. Gutmann, C. Schmitz-Linneweber, I. Small, P. Kindgren, The E domain of CRR2 participates in sequence-specific recognition of RNA in plastids, *New Phytol.* 222 (2019) 218–229, <https://doi.org/10.1111/nph.15578>.
- V. Salone, M. Rüdinger, M. Polsakiewicz, B. Hoffmann, M. Groth-Maloney, B. Szurek, I. Small, V. Knoop, C. Lurin, A hypothesis on the identification of the editing enzyme in plant organelles, *FEBS Lett.* (2007), <https://doi.org/10.1016/j.febslet.2007.07.075>.
- R.L. Scholl, S.T. May, D.H. Ware, Seed and molecular resources for Arabidopsis, *Plant Physiol.* 124 (2000) 1477–1480, <https://doi.org/10.1104/PP.124.4.1477>.
- I.D. Small, N. Peeters, The PPR motif – a TPR-related motif prevalent in plant organellar proteins, *Trends Biochem. Sci.* 25 (2000) 45–47, [https://doi.org/10.1016/S0968-0004\(99\)01520-0](https://doi.org/10.1016/S0968-0004(99)01520-0).
- T. Sun, S. Bentolila, M.R. Hanson, The unexpected diversity of plant organelle RNA editosomes, *Trends Plant Sci.* 21 (2016) 962–973, <https://doi.org/10.1016/j.tplants.2016.07.005>.
- Y. Sun, J. Huang, S. Zhong, H. Gu, S. He, L.-J. Qu, Novel DYW-type pentatricopeptide repeat (PPR) protein BLX controls mitochondrial RNA editing and splicing essential for early seed development of Arabidopsis, *J. Genet. Genom.* 45 (2018) 155–168, <https://doi.org/10.1016/j.jgg.2018.01.006>.
- Takenaka, M., Jörg, A., Burger, M., Haag, S., 2018. Requirement of Various Protein Combinations for Each C-to-U RNA Editosome in Plant Organelles, pp. 223–49. ([http://doi.org/10.1007/978-3-319-78190-7\\_9](http://doi.org/10.1007/978-3-319-78190-7_9)). (in:).
- M. Takenaka, S. Takenaka, T. Barthel, B. Frink, S. Haag, D. Verbitskiy, B. Oldenkott, M. Schallenberg-Rüdinger, C.G. Feiler, M.S. Weiss, G.J. Palm, G. Weber, DYW domain structures imply an unusual regulation principle in plant organellar RNA editing catalysis, *Nat. Catal.* 4 (2021) 510–522, <https://doi.org/10.1038/s41929-021-00633-x>.
- S. Toma-Fukai, Y. Sawada, A. Maeda, H. Shimizu, T. Shikanai, M. Takenaka, T. Shimizu, Structural insight into the activation of an Arabidopsis organellar C-to-U RNA editing enzyme by active site complementation, *Plant Cell* (2022) 1–13, <https://doi.org/10.1093/plcell/koac318>.
- D. Verbitskiy, A. Zehrmann, B. Härtel, A. Brennicke, M. Takenaka, Two related RNA-editing proteins target the same sites in mitochondria of Arabidopsis thaliana, *J. Biol. Chem.* 287 (2012) 38064–38072, <https://doi.org/10.1074/jbc.M112.397992>.
- J.A. Wagoner, T. Sun, L. Lin, M.R. Hanson, Cytidine deaminase motifs within the DYW domain of two pentatricopeptide repeat-containing proteins are required for site-specific chloroplast RNA editing, *J. Biol. Chem.* (2015), <https://doi.org/10.1074/jbc.M114.622084>.
- H. Wang, J. Liu, W. Zhao, W. Terzaghi, L. Deng, H. Liu, Q. Zheng, S. Fan, W. Hua, M. Zheng, *DELAYED GREENING 409* encodes a dual-localized pentatricopeptide repeat protein required for chloroplast and mitochondrial development, *Plant Physiol.* (2023), <https://doi.org/10.1093/plphys/kiad258>.
- Y. Yagi, S. Hayashi, K. Kobayashi, T. Hirayama, T. Nakamura, Elucidation of the RNA recognition code for pentatricopeptide repeat proteins involved in organelle RNA editing in plants, *PLoS One* (2013), <https://doi.org/10.1371/journal.pone.0057286>.
- J. Yan, Q. Zhang, P. Yin, RNA editing machinery in plant organelles, *Sci. China Life Sci.* 61 (2018) 162–169, <https://doi.org/10.1007/s11427-017-9170-3>.
- J. Yan, Q. Zhang, Z. Guan, Q. Wang, L. Li, F. Ruan, R. Lin, T. Zou, P. Yin, MORF9 increases the RNA-binding activity of PLS-type pentatricopeptide repeat protein in plastid RNA editing, *Nat. Plants* 3 (2017) 17037, <https://doi.org/10.1038/nplants.2017.37>.
- Y. Yang, X.-Y. Liu, J.-J. Tang, Y. Wang, C. Xu, B.-C. Tan, GRP23 plays a core role in E-type editosomes via interacting with MORFs and atypical PPR-DYW in Arabidopsis mitochondria, *Proc. Natl. Acad. Sci. USA* 119 (2022), <https://doi.org/10.1073/pnas.2210978119>.
- Y. Yang, B. Oldenkott, S. Ramanathan, E. Lesch, M. Takenaka, M. Schallenberg-Rüdinger, V. Knoop, DYW cytidine deaminase domains have a long-range impact on RNA recognition by the PPR array of chimeric plant C-to-U RNA editing factors and strongly affect target selection, *Plant J.* (2023), <https://doi.org/10.1111/tpj.16412>.
- A. Yap, P. Kindgren, C. Colas Des Francs-Small, T. Kazama, S.K. Tanz, K. Toriyama, I. Small, AEF1/MPR25 is implicated in RNA editing of plastid atpF and mitochondrial nad5, and also promotes atpF splicing in Arabidopsis and rice, *Plant J.* 81 (2015) 661–669, <https://doi.org/10.1111/tpj.12756>.
- P. Yin, Q. Li, C. Yan, Y. Liu, J. Liu, F. Yu, Z. Wang, J. Long, J. He, H.-W. Wang, J. Wang, J.-K. Zhu, Y. Shi, N. Yan, Structural basis for the modular recognition of single-stranded RNA by PPR proteins, *Nature* 504 (2013) 168–171, <https://doi.org/10.1038/nature12651>.
- J. Zhao, S.K. Cao, X.L. Li, R. Liu, F. Sun, R.C. Jiang, C. Xu, B.C. Tan, EMP80 mediates the C-to-U editing of nad7 and atp4 and interacts with ZmDYW2 in maize mitochondria, *New Phytol.* 234 (2022) 1237–1248, <https://doi.org/10.1111/nph.18067>.
- Q. Zhu, J. Dugardeyn, C. Zhang, M. Takenaka, K. Kühn, C. Craddock, J. Smalle, M. Karampelias, J. Denecke, J. Peters, T. Gerats, A. Brennicke, P. Eastmond, E. H. Meyer, D. Van Der Straeten, SLO2, a mitochondrial pentatricopeptide repeat protein affecting several RNA editing sites, is required for energy metabolism, *Plant J.* 71 (2012) 836–849, <https://doi.org/10.1111/j.1365-3113X.2012.05036.x>.