



**HAL**  
open science

# Compact terahertz harmonic generation in the Reststrahlenband using a graphene-embedded metallic split ring resonator array

Alessandra Di Gaspare, Chao Song, Chiara Schiattarella, Lianhe Li, Mohammed Salih, A. Giles Davies, Edmund Linfield, Jincan Zhang, Osman Balci, Andrea Ferrari, et al.

## ► To cite this version:

Alessandra Di Gaspare, Chao Song, Chiara Schiattarella, Lianhe Li, Mohammed Salih, et al.. Compact terahertz harmonic generation in the Reststrahlenband using a graphene-embedded metallic split ring resonator array. *Nature Communications*, 2024, 15 (1), pp.2312. 10.1038/s41467-024-45267-2 . hal-04589972

**HAL Id: hal-04589972**

**<https://u-paris.hal.science/hal-04589972v1>**

Submitted on 9 Sep 2024

**HAL** is a multi-disciplinary open access archive for the deposit and dissemination of scientific research documents, whether they are published or not. The documents may come from teaching and research institutions in France or abroad, or from public or private research centers.

L'archive ouverte pluridisciplinaire **HAL**, est destinée au dépôt et à la diffusion de documents scientifiques de niveau recherche, publiés ou non, émanant des établissements d'enseignement et de recherche français ou étrangers, des laboratoires publics ou privés.



Distributed under a Creative Commons Attribution 4.0 International License

# Compact terahertz harmonic generation in the Reststrahlenband using a graphene-embedded metallic split ring resonator array

Received: 4 December 2023

Accepted: 19 January 2024

Published online: 14 March 2024

 Check for updates

Alessandra Di Gaspare<sup>1</sup>, Chao Song<sup>2</sup>, Chiara Schiattarella<sup>1</sup>, Lianhe H. Li<sup>3</sup>, Mohammed Salih<sup>3</sup>, A. Giles Davies<sup>3</sup>, Edmund H. Linfield<sup>3</sup>, Jincan Zhang<sup>4</sup>, Osman Balci<sup>4</sup>, Andrea C. Ferrari<sup>4</sup>, Sukhdeep Dhillon<sup>2</sup> & Miriam S. Vitiello<sup>1</sup>✉

Harmonic generation is a result of a strong non-linear interaction between light and matter. It is a key technology for optics, as it allows the conversion of optical signals to higher frequencies. Owing to its intrinsically large and electrically tunable non-linear optical response, graphene has been used for high harmonic generation but, until now, only at frequencies < 2 THz, and with high-power ultrafast table-top lasers or accelerator-based structures. Here, we demonstrate third harmonic generation at 9.63 THz by optically pumping single-layer graphene, coupled to a circular split ring resonator (CSRR) array, with a 3.21 THz frequency quantum cascade laser (QCL). Combined with the high graphene nonlinearity, the mode confinement provided by the optically-pumped CSRR enhances the pump power density as well as that at the third harmonic, permitting harmonic generation. This approach enables potential access to a frequency range (6–12 THz) where compact sources remain difficult to obtain, owing to the Reststrahlenband of typical III-V semiconductors.

The development of compact technologies for the generation of light across the mid-infrared (MIR) (2.6–24.2  $\mu\text{m}$ )<sup>1,2</sup> and terahertz (THz) (60–250  $\mu\text{m}$ )<sup>3–5</sup> regions of the electromagnetic spectrum has unlocked a plethora of new imaging and sensing methodologies<sup>3</sup>. These enabled the study of fundamental light-matter interactions across the physical<sup>6</sup>, chemical<sup>7</sup> and biological<sup>8,9</sup> sciences. The key disruptor has been the quantum cascade laser (QCL)<sup>10</sup>, which progressed from being a laboratory curiosity to become an essential, practical and compact photonic source for a broad range of applications<sup>11,12</sup>.

This expansion of applications has, however, highlighted a significant gap in technological capability in the spectral region between the MIR and THz, i.e. 25–60  $\mu\text{m}$  (12–5 THz), often referred to as the far-infrared (FIR). Unlike the neighboring MIR and THz regions, the FIR lacks a practical semiconductor laser technology, owing to parasitic optical phonon absorption – the *Reststrahlenband* – in the constituent

III-V semiconductors used to fabricate QCLs<sup>10</sup>. This is unfortunate, since there is a large number of applications that could be addressed by a compact FIR source, ranging from sensing complex hydrocarbons in the petroleum-industry<sup>13</sup>, to probing the protein functions in amino acids<sup>14</sup>. FIR sources are also an enabling technology for near-field microscopy in the solid state (phononics, plasmonics)<sup>15</sup>, and for quantum optics, e.g. in the manipulation of Rydberg atoms in quantum computation architectures<sup>16</sup>.

There is no practical, spectrally narrowband, technology to access the FIR at present, to the best of our knowledge. Current techniques are either difficult to use in real time, in situ applications, or they suffer from poor performance. Thermal sources used in Fourier transform infra-red (FTIR) spectroscopy are the most common approach, but they are inherently incoherent, weak and spectrally broad. Alternative commercial systems include time-domain spectroscopy (TDS), in

<sup>1</sup>NEST, CNR-NANO and Scuola Normale Superiore, 56127 Pisa, Italy. <sup>2</sup>Laboratoire de Physique de l'École Normale Supérieure, ENS, Université PSL, CNRS, Sorbonne Université, Université de Paris Cité, Paris, France. <sup>3</sup>School of Electronic and Electrical Engineering, University of Leeds, Leeds LS2 9JT, UK.

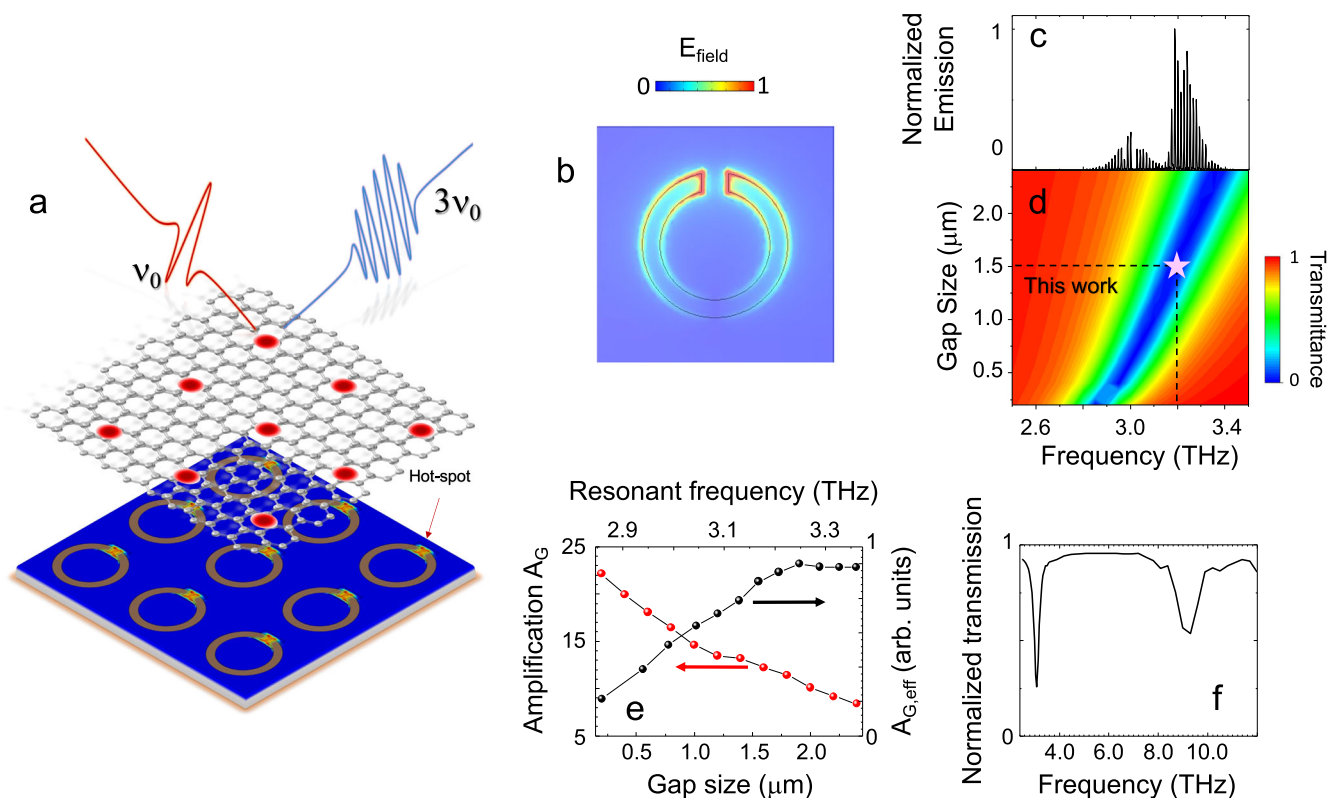
<sup>4</sup>Cambridge Graphene Centre, University of Cambridge, Cambridge CB3 0FA, UK. ✉ e-mail: [miriam.vitiello@sns.it](mailto:miriam.vitiello@sns.it)

which III-V photoconductive switches<sup>17</sup>, or spintronic heterostructures<sup>18,19</sup>, generate coherent radiation pulses through femtosecond excitation, but these are also spectrally broad. Furthermore, TDS systems are not compact and emit most power over the ~0.2–4 THz range. Spintronic emitters can be also employed to generate broad-band THz light in a pumped optical scheme via up-conversion<sup>20</sup>. The few existing narrowband sources, other than facility-based free electron lasers, rely on difference frequency generation in exotic gas lasers (e.g.  $^{15}\text{NH}_3$ )<sup>21</sup>, which are cumbersome and lack stability<sup>21</sup>. Present research is focused on identifying new III-V semiconductor systems for spectrally narrowband and powerful laser sources, including SiGe<sup>22</sup> and ZnO<sup>23</sup>, for the THz range<sup>24</sup>. However, due to the complexity of their impurity and phonon spectra (~9 THz), it is challenging to reach the 25–50  $\mu\text{m}$  (6–12 THz) FIR spectral window.

On the other hand, nonlinearities in layered materials (LMs) are promising for the generation of THz or FIR light<sup>25,26</sup>, due to their unique optical and electronic properties, distinct from those of bulk materials, including III-V semiconductors. Single layer graphene (SLG) has a third order nonlinearity  $\chi^{(3)} \sim 10^{-9} \text{ m}^2/\text{V}^2$ , i.e. ~15 orders of magnitude higher than typical ‘THz’ materials<sup>25,27,28</sup>. Combined with SLG’s ultrafast dynamics<sup>29</sup>, this has permitted THz up-conversion - harmonic generation - where light can be converted from a low to a higher photon

energy at harmonics of the former. High harmonic generation at room temperature was reported using moderate fields, up to the 7<sup>th</sup> harmonic at frequencies  $\leq 2.2$  THz with an optical pump at 0.3 THz<sup>26,30–32</sup>. In contrast to SLG that only possesses a third order nonlinearity, THz second harmonic generation can be achieved using spintronic heterostructures<sup>20</sup>. However, all these demonstrations, limited to low THz frequencies<sup>33</sup>, require entire facilities or large table-top laser systems as THz pump sources, thus limiting their applicability.

Here, we combine resonant nonlinear optics in SLG and strong optical confinement to demonstrate FIR emission at 9.63 THz in a compact geometry. This is performed by optically pumping SLG coupled to a circular split ring resonator (CSRR) with a high-power semiconductor laser – a QCL – emitting at a central frequency of 3.21 THz (see Fig. 1a)<sup>34</sup>. The mode confinement provided by the CSRR, combined with the SLG nonlinearity, is essential to enhance the pump power density from the THz QCL, allowing third harmonic generation (THG) in SLG in a frequency range (>3 THz) unexplored so far, where compact sources do not exist. As well as generating light in the *Reststrahlenband*, our results show that THz QCLs can be used to explore high field THz physics, where a band structure-by-design approach can be used to target narrowband resonances in, e.g., plasmons, magnons and phonons.



**Fig. 1 | SLG coupled to a circular split ring resonator (CSRR), resonant at 3.21 THz.** **a** Device concept: CSRR array resonant at a selected THz frequency  $\nu_0$ , covered with single layer graphene (SLG) for frequency up-conversion. Third harmonic generation (THG) is a result of the strong field enhancement in the gap of the SLG-CSRR. **b** Two-dimensional (2d) map of the optical electric field amplitude, calculated by the finite element method (FEM) for the bare CSRR, at  $\nu_0 = 3.21$  THz. **c** Fourier transform infrared (FTIR) emission spectrum of the quantum cascade laser (QCL) pump source. The SLG CSRR is designed to be resonant with the central frequency of the QCL optical bandwidth. **d** 2d maps of transmittance, calculated as the square amplitude of the S12 coefficient (see Methods) extracted from simulations, as a function of gap size, and corresponding resonance frequency,

obtained from simulations. The intersection of the dashed lines and the star symbol marks the experimental condition adopted here. **e** Field enhancement of CSRR ( $A_G$ , amplification gap, red circles), and normalized amplification,  $A_{G,\text{eff}}$  (black circles, normalizing  $A_G$  for the effective extension of the enhancement region), plotted as a function of the split gap size (bottom axis) and of the corresponding resonance frequency (top axis). The field enhancement is extracted by running simulations with the gap size as the only parametric value, while keeping the CSRR geometry (ring radius,  $r = 3.6 \mu\text{m}$ , ring width,  $w = 1 \mu\text{m}$ , and period  $p = 14.5 \mu\text{m}$ ) fixed. **f** Simulated transmission spectra, extracted from the FEM simulations, for the resonator geometry in **d**, over the 2–12 THz frequency range, showing the fundamental third harmonic modes of interest for THG.

## Results

### SLG-embedded metallic split ring resonator array

To overcome the challenges imposed by the small Drude weight of the SLG conductivity at  $\sim 3$  THz<sup>35,36</sup>, which limits the conversion efficiency for harmonic generation, we embed SLG (see Methods) in a resonant structure, comprising of an array of micrometric C-shaped ring resonators (CSRR). This shifts and enhances the SLG Drude conductivity at the QCL pump frequency, which, in turn, maximizes the light-matter interaction region, and permits THG to be observed. The field enhancement in the split gap of each CSRR<sup>37,38</sup> is one order of magnitude larger than the absorption in an un-patterned film (i.e. no resonator)<sup>39,40</sup>. In the un-patterned SLG, the nonlinear response arises from the SLG direct absorption<sup>26</sup>. The introduction of a metamaterial-based structure is an effective solution to concentrate the optical field in the SLG<sup>30,32</sup>, thus enhancing the SLG absorption. In the CSRR case, this leads to the formation of a hot-spot in the split gap, which determines an out-of-equilibrium hot electron state<sup>29,41</sup>, as confirmed both by electromagnetic simulations and near-field nano-imaging (see below).

The two-dimensional (2d) resonator array comprises a set of Au, CSRRs, patterned onto a SiO<sub>2</sub>/Si substrate (Fig. 1b). To design the CSRR, we first set the unit cell geometrical parameters, e.g. ring diameter, width and gap size, to match the desired resonance for frequency up-conversion (see Supplementary Note 1) at the central frequency (3.21 THz) of the pump source, e.g. the THz frequency of the QCL  $\nu_0$  (Fig. 1c). The electromagnetic response, extracted by finite element method (FEM) simulations (Comsol Multiphysics), exhibits a tunable-by-design absorption band with a specific resonant frequency, and a field-enhancement (Fig. 1b) in the split gap. Hence, the CSRR design offers the capability to exploit the split gap for SLG embedding. This allows us to concentrate the peak electric field in a portion of the active material where no screening or absorption from the metallic counterpart of the array dominates. This is in contrast with simpler grating arrays<sup>32</sup>, where the electromagnetic coupling efficiency drops as  $1/f$ <sup>33</sup>, hence being less suitable for the high THz frequencies aimed in the present work.

The electromagnetic coupling mechanism between the CSRR and SLG is a combination of capacitive coupling due to the CSRR gap and inductive coupling due to its ring shape. The magnetic inductive current helps building the electric field in the split gap, thus enhancing the field for THG.

Figure 1d shows the frequency dependent transmittance map of for different split gap sizes. The resonance frequency is affected by the gap size, revealing the interplay between the parameters needed to set the optimal geometry<sup>37</sup>. The field enhancement of the CSRR ( $A_G$ ), defined as the ratio between the average field in the resonator gap and that in an equally extended surface outside the gap region, i.e. at the ring center, is shown in Fig. 1e. The field strength in the gap is higher in resonators with smaller sized gaps. However, in smaller gap resonators, the effective area of the pumped active film and the size of the hotspot region is reduced<sup>42</sup>. Thus, we define an effective field enhancement  $A_{G,eff}$  by normalizing  $A_G$  to the effective hot-spot area (black dots in Fig. 1e). The optimal combination of gap size, enhancement factor and resonance frequency, is shown for a 1.5- $\mu$ m split-gap. This achieves a maximum enhancement factor -13, corresponding to a calculated quality factor  $Q \sim 13$  for a CSRR designed to be resonant at 3.21 THz. In our experiment, the pump signal is absorbed by the SLG-embedded resonator, driving, and enhancing, its non-linear response. The pump is then up-converted for generation at  $3\nu_0$ . The CSRR enhances the pump field in the up-conversion of the incoming field, as well as contributing to the emitted third harmonic signal, since CSRR arrays have resonant modes at the third harmonic frequency (Fig. 1f), hence boosting the overall THG efficiency.

To contain the optical screening of the metallic CSRR array and the consequent resonance bleaching if the SLG film covers the entire

ring area (see Supplementary Note 1), we integrate SLG only in the CSRR split gap (see Fig. 2a). The SLG-CSRR transmittance, measured by FTIR spectroscopy in vacuum (Fig. 2b), shows a resonant absorption dip slightly weaker (-22%) and blue-shifted (0.20 THz) than that measured in the bare CSRR in an identical experimental configuration.

Comparison with the simulated design reveals a good agreement with the calculated full-width-at-half maximum (FWHM) of the absorption dip in the bare CSRR, and a broader dip in the SLG-CSRR, corresponding to  $Q_{bare} = 10.5$  for the bare CSRR and  $Q_{gra} = 4.5$  for the SLG-CSRR (see Fig. 2c). If compared to linear grating dipolar resonators, the ring design permits a higher  $Q$ -factor (See Supplementary Note 4).

A more accurate model that accounts for the SLG integration in the CSRR gap requires consideration of the SLG complex optical constants. Within the Drude model<sup>35</sup>, the SLG intraband conductivity is a doping- and scattering time- dependent function:

$$\sigma_{intra}(\nu) = \frac{-iD_0}{\pi} \frac{1}{(2\pi\nu + i\Gamma_0)} \quad (1)$$

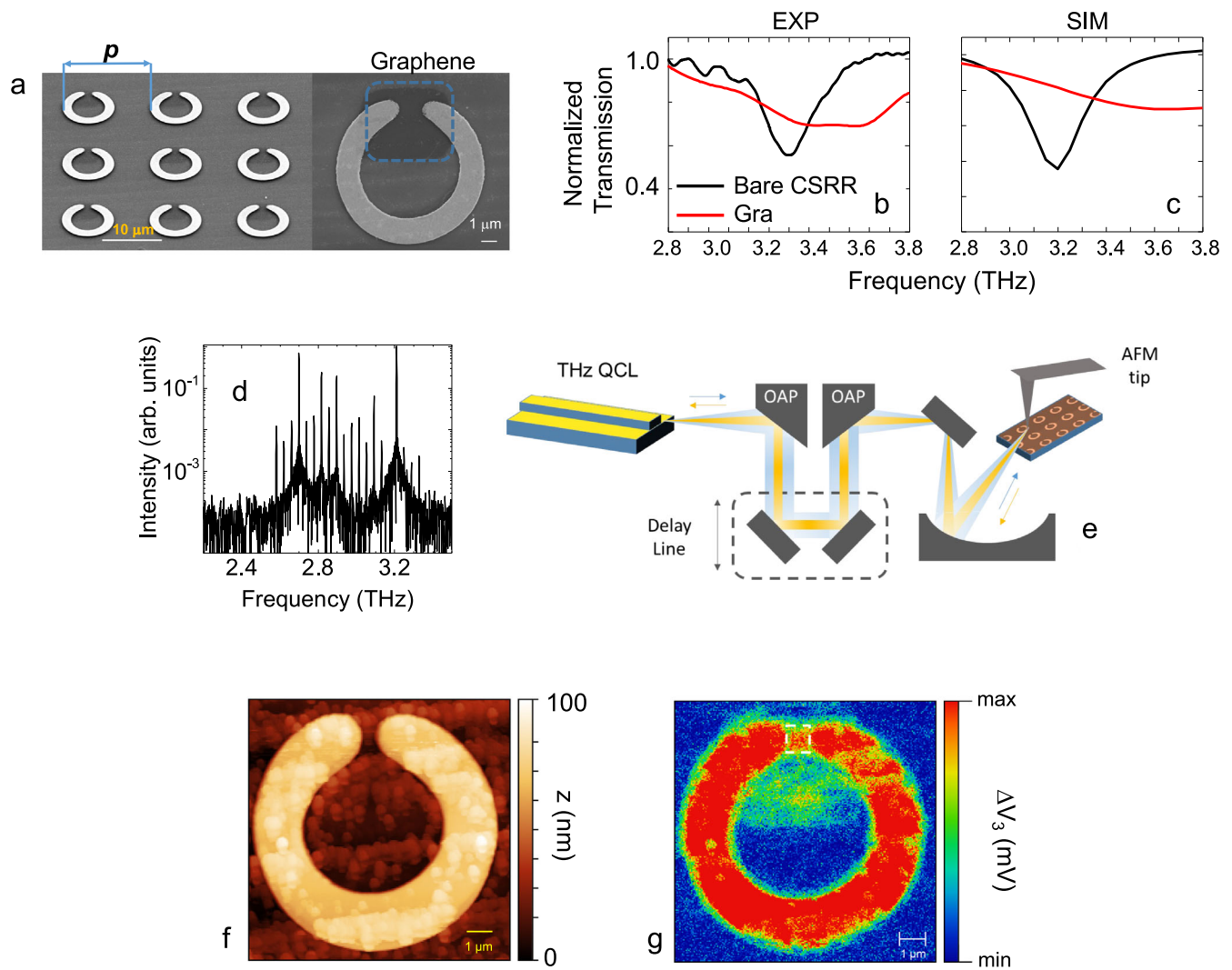
where  $D_0 = E_F e^2 / \hbar^2$  is the linear Drude weight,  $e$  is the electron charge,  $\hbar$  is the reduced Planck constant,  $\Gamma_0 = \tau_0^{-1} = e v_F^2 / E_F \mu$  is the scattering rate,  $E_F$  the Fermi energy,  $v_F$  the Fermi velocity, and  $\mu$  is the carrier mobility. By setting  $E_F = 250$  meV and  $\tau_0 = 23.4$  fs (see Supplementary Notes 2–3), we reproduce the experimental blue-shift and broadening of the absorption dip in Fig. 2c.

To map the optical field enhancement in the resonator gap induced by THz photoexcitation, we perform near-field nanoscopy experiments on an individual SLG-CSRR, employing a THz QCL emitting 19 equally spaced lasing lines (central frequency  $\nu_c = 2.94$  THz, frequency spacing  $\Delta\nu = 38.5$  GHz, Fig. 2d). We employ a detector-less technique (Fig. 2e), with the QCL acting simultaneously as both THz source and phase-sensitive detector in a self-mixing (SM) interferometric scheme<sup>43,44</sup>. (see Methods). The coherent superposition of the reinjected THz field with the QCL produces a perturbation of the laser voltage  $\Delta V$  that depends on both amplitude and phase of the THz field scattered by the tip (see Methods). We acquire the sample topography (Fig. 2f) simultaneously with the total back-scattered signal (Fig. 2g). The near-field map of the third-order SM amplitude signal  $\Delta V_3$  (Fig. 2e) has an optical contrast modulation that reveals the different reflectivity of CSRR array elements, metal ring, SLG film and Si/SiO<sub>2</sub> substrate. The near field signal from the SLG surface outside of the split gap region contrasts with the corresponding signal from the insulating Si/SiO<sub>2</sub> substrate, being 2.1 times larger.

This is expected from the higher optical contrast/local reflectivity of SLG when compared to the Si/SiO<sub>2</sub> substrate. Optical amplification, with an enhancement factor -3.8, happens only in the resonator split gap, as highlighted in Fig. 2g. This is a factor -3.4 lower than that computed via electromagnetic simulations (Fig. 1e). The discrepancy arises from the optical bandwidth of the QCL comb used for the near-field, with only one mode overlapping the SRR bandwidth. By averaging the amplification factors extracted from the simulation at each comb tooth frequency, and then normalizing the result by the corresponding intensity, we obtain an average enhancement -3.31, in agreement with experiments.

### Nonlinear optical response

The hot-electron distribution in SLG, expected to induce a non-linear response<sup>45</sup>, is affected both by the local field enhancement in the split gap and by the overall absorption of the CSRR array. Although the implementation of high (-100)  $Q_s$  could be the most convenient pathway to promote nonlinear effects in SLG at high (-50 kV/cm) fields<sup>39</sup>, the complex interplay between non-linear response and shape of the absorption dip can lead to a counterintuitive outcome. Indeed,



**Fig. 2 | Field enhancement in the SLG CSRR gap.** **a** Scanning electron microscope (SEM) image of optimized CSRR array, with period  $p$ , patterned with SLG that only covers the split gap area (blue dashed area on the right), where the field enhancement is maximized. The dotted blue area marks SLG. **b** Experimental and **(c)** simulated transmission of bare CSRR (black) and SLG-CSRR (red) arrays. The transmission curves are normalized by the reference sample trace, acquired on a portion of a bare  $\text{SiO}_2/\text{Si}$  substrate. **d** FTIR emission spectrum of QCL frequency comb with spectral bandwidth-0.7 THz centered -2.94 THz. **e** Schematic near-field scattering detector-less nanoscope, employing a THz QCL frequency comb as source and detector simultaneously. The self-mixing signal, collected to retrieve the near field maps, arises from re-injection of the backscattered beam from the atomic force microscopy (AFM) tip of the scattering type scanning near field

optical microscope (s-SNOM) into the laser facet. A delay-line is used to control the length  $L$  of the optical path and tune the optical feedback. OAP: off axis parabolic mirror. **f** Topographic maps of a single SLG-CSRR. **g** Near-field map of third-order self-mixing signal  $\Delta V_3$  of the CSRR in panel **a** (right side). The white dashed area highlights the field enhancement in the slit gap. The near-field map is collected with the radiation approaching the sample at a  $45^\circ$  incident angle. The sample is therefore excited with two equally contributing  $s$ - and  $p$ -terms with respect to the CSRR plane, under the hypothesis of a purely collimated beam. However, the focusing of the beam onto the SNOM tip also implies a spreading of the probed incident wavevectors  $k$  (therefore of the polarizations, orthogonal to  $k$ ), dictated by the beam radius and the numerical aperture of the focusing component, i.e. the SNOM parabolic mirror in front of the tip.

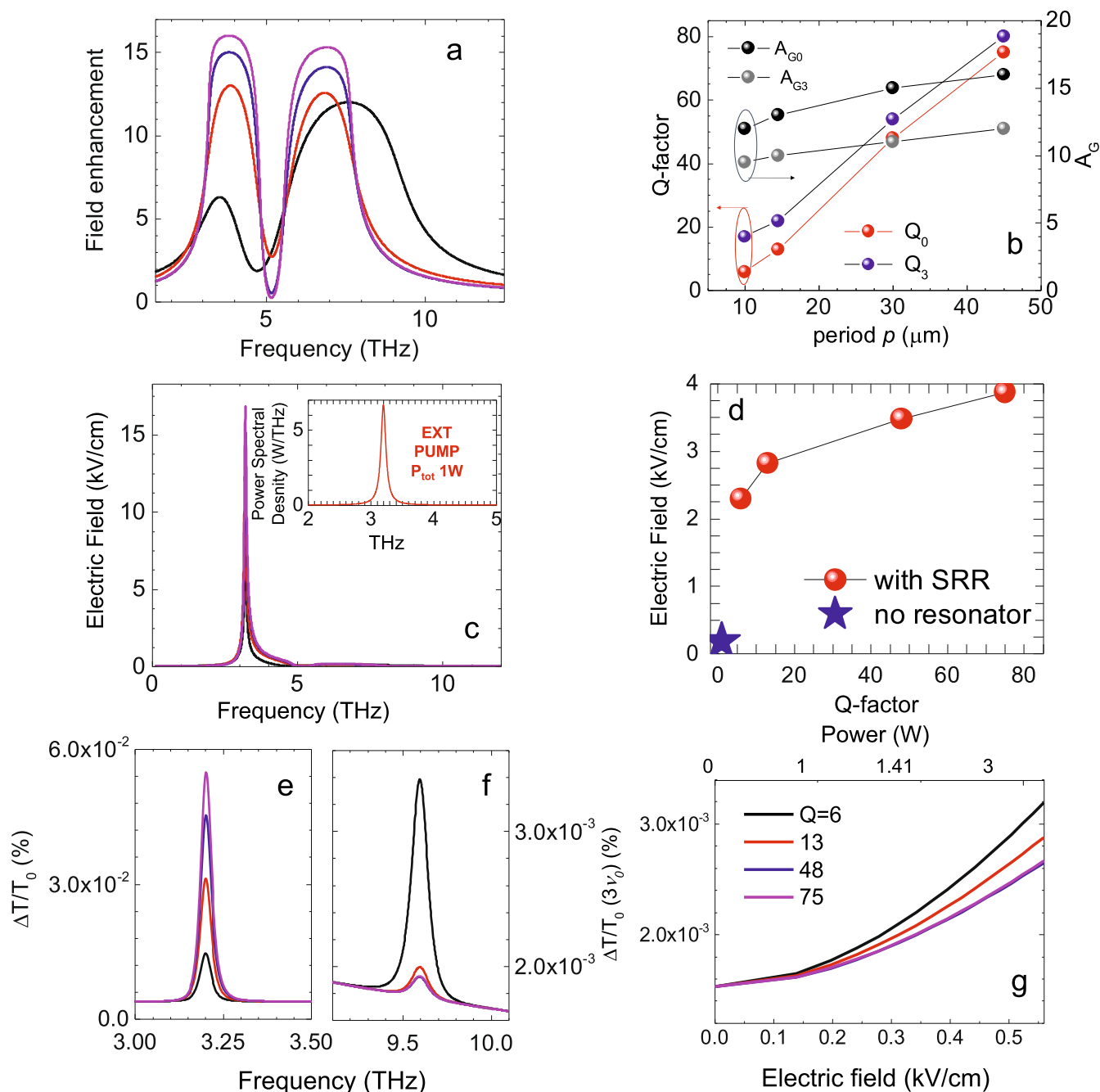
the presence of a  $3^{\text{rd}}$  order resonance in the CSRR (see Supplementary Note 4) plays a role in the THG process, affecting its efficiency.

We thus consider the total field enhancement by normalizing the absorption of the CSRR, calculated by considering a Lorentz-like electromagnetic response of the resonator, resembling a damped oscillator at central frequency  $\nu_0$  and nominally different  $Q_0$  values (see Fig. 3a), with the maximum field enhancement ( $A_G$ , see Fig. 1e).

The presence of a  $3^{\text{rd}}$  order resonant mode having a quality factor  $Q_3$  (see Supplementary Note 4) is reflected in the field enhancement, which also includes a  $3^{\text{rd}}$  order harmonic term. We select a range of  $Q$  defined by the two extreme cases, i.e. an isolated CSRR with  $Q$  set only by geometry, and the packed array case, where the radiative losses from ring cross-talking induces a significant broadening of the

resonance. This results in  $Q$  from 75 (ideal, zero losses) to 6 (radiative losses from inter-lattice cross talk, see Supplementary Note 4).  $Q$  and  $Q_3$  have a similar dependence from the period  $p$  of the CSRR array (Fig. 3b), with  $Q_3$  a factor-2.3–1.2 larger than  $Q$  across our range of periods.  $A_G$  of the  $3^{\text{rd}}$  order mode is  $< 25\%$  weaker than that of the fundamental mode.

Here, the hot-electron dynamics in the SLG Dirac-like system affects its optical response to external photoexcitation. The effective electric field in the gap, i.e. on the SLG,  $E_0(\nu)$ , Fig. 3c, comprises the external optical beam (inset Fig. 3c), a quasi-monochromatic, linearly polarized, radiation field at normal incidence. The beam delivers 1 W optical power focused on a 0.7 mm diameter circular spot. This is amplified by the field enhancement shown in Fig. 3a, defined as the SLG CSRR absorption normalized by  $A_G$ .  $E_0(\nu_0)$  on SLG-CSRR is over one



**Fig. 3 | Simulated THG efficiency in THz QCL pumped SLG-CSRR.** **a** Field enhancement in SLG-CSRR as a function of frequency, for different resonator array quality factors ( $Q$ ), representing the SLG-CSRR absorption normalized by  $A_G$ . Different colors correspond to  $Q = 75$  (purple), 48 (blue), 13 (red), 6 (black). **b**  $A_{G0}$  and  $A_{G3}$  (right axis) calculated as the ratio between average optical field in- and outside of the SRR gap, extracted from the FEM simulation for the fundamental (black) and third harmonic modes (gray), shown alongside the respective  $Q$  (left axis) labeled as  $Q_0$  (red) and  $Q_3$  (blue), as a function of SRR array period. **c** Electric field on SLG-CSRR as a function of frequency, obtained from the convolution of the field enhancement of **a**) and the optical beam intensity in the inset of **c**, assuming 1 W total emission power focused on a 700  $\mu\text{m}$  diameter circular spot, whose

frequency distribution is shown in the inset, for different  $Q$ . The color code is the same as in panel **a**. Inset: **d** Electric field, calculated at the fundamental frequency (red dots) in SLG-CSRR and SLG (no SRR, blue star), as a function of  $Q$ , corresponding to the  $p$  values of **b**. **e**, **f** Normalized transmittance variation as a function of frequency,  $\Delta T/T_0$  ( $\nu$ ), in the pumped SLG-CSRR, assuming an incident effective electric field as in **c**, following Eq. (3), at the fundamental QCL frequency  $\nu_0$  (**d**), and at  $3\nu_0$  (**e**), for different  $Q$  values (same code as in **a**). **g** THG efficiency, defined as  $\Delta T/T_0$  ( $3\nu_0$ ) in the SLG-CSRR, as a function of impinging electric field (bottom axis) and total power (top axis), assuming an incident beam diameter of 700  $\mu\text{m}$ , calculated at different  $Q$  (same color code is the same as in **a**).

order of magnitude larger than that calculated on SLG only (Fig. 3d). The corresponding  $Q$ , calculated at  $p = 45 \mu\text{m}$ , is -83% larger than that at  $p = 10 \mu\text{m}$ , as shown in Fig. 3b (red dots).

Under steady state excitation<sup>46</sup>, where the optical beam is either a continuous wave or has a pulse duration much longer than the SLG cooling time ( $>2.5 \text{ ps}$ )<sup>29,47,48</sup>, the impinging electric field induces a

polarization current in the SLG, oscillating in the same direction of the incoming field (see Supplementary Note 5) at the frequency of the incident wave<sup>27,28,49</sup>. The SLG non-linear response relies on the hot carrier population driven by efficient intraband absorption. It can be modeled by using the SLG Drude response, taking into account the heating/cooling dynamics of the carrier population, and the time

profile of the excitation beam<sup>25,30,42</sup>. However, at higher optical field intensity ( $\geq 10$  kV/cm), the presence of inherent nonlinear components in the optical response also suggests field-driven nonlinearities beyond thermal effects, accounted by the Kerr term<sup>42</sup> (see Supplementary Note 5). In doped SLG, the absorption of an intense, high-fluence THz frequency beam, may lead to overheating, a phenomenon known as “hot-carrier multiplication”, ascribed to the fast thermalization of the free carriers, accompanied by a reduction of the absorption coefficient<sup>31</sup>. Although the fluence is significantly higher in the present case of quasi-continuous wave (CW) source (pulse duration 1  $\mu$ s, fluence  $> 350 \mu\text{Jcm}^{-2}$ ), the peak electric field is over one order of magnitude lower than that achievable in pulsed sources. The thermodynamic equation for thermalization dynamics (see Supplementary Note 5), leads to an electronic temperature significantly lower than that retrieved in the case of pulsed sources<sup>31</sup>. Hence, overheating effects can be neglected in the present case.

The non-linear optical response can then be calculated by following the method of refs. 30,31,50:

$$\sigma_{3,\text{tot}}(\nu) = \sigma_{\text{intra}}(\nu) + |E_0(\nu)|^2 \times \sigma_3(\nu) \quad (2)$$

with  $\sigma_3(\nu)$  the non-linear Kerr optical conductivity. Perturbative models<sup>51–53</sup> based on microscopic scattering formalisms encoding relaxation times for both intraband and interband absorption are valid under the assumption of normal incidence, and for a finite-time pulse excitation. Both conditions do not apply to our experimental configuration. Therefore, we use the semi-empirical model of refs. 25,26,30, working well in predicting the THG conversion efficiencies, by calculating the hot-electrons optical conductivity, under steady excitation conditions, to mimic the THz quasi-CW beam.

In Eq. (2), the 3<sup>rd</sup> order conductivity is then calculated assuming a hot-electron temperature ( $T_e$ ) dependence of the Drude coefficients, and including the contribution of the plasmonic frequency dependence, accounted for by introducing the effective frequency  $\nu_{\text{eff}} = (\nu^2 - \nu_0^2)/\nu$ . The linear Drude weight ( $D_0$ ) and scattering rate ( $\Gamma_0$ ) in Eq. (1), are valid for  $T = 0$ . At  $T \neq 0$ , the smearing-out of the Fermi-Dirac distribution could open up alternative channels for hot-carriers relaxation, e.g. interband transitions, and the model would need to take into account different relaxation paths and their contribution to the conductivity. These effects are negligible for high-doping and low energy photons, i.e. under our conditions where:  $E_F \gg \hbar\omega$  and  $E_F \gg k_B T_e$ <sup>31,46</sup>. The purely Drude-like and hot-electron terms are an excellent approximation for the THz intraband absorption, and they can be extended to the  $T \neq 0$  case. When the system nonlinear response is stimulated, the detected optical signal deviates from the expected linear signal. The laser beam illuminating the SRR array is transmitted to the detector after interacting with the SRR sample. The nonlinear response induces a transmittance variation  $\Delta T/T_0 = |T_3 - T_0|/T_0$ , whose frequency dependence (Fig. 3e) can be derived from the linear ( $T_0$ ), and non-linear ( $T_3$ ) transmittances as:

$$[T_0, T_3(\nu)] = \frac{4n_{\text{sub}}}{Z_0^2 \left| \frac{n_{\text{sub}}}{Z_0} + [\sigma_0, \sigma_{3,\text{tot}}(\nu)] \right|^2} \quad (3)$$

where  $Z_0$  is the vacuum impedance. Such parameter also represents the THG efficiency, defined as the signal intensity variation at  $3\nu_0$  over the signal intensity at the fundamental (linear) frequency<sup>26,30</sup>.

We observe an overall increase of the optical transmission (Fig. 3e, f), resembling optical absorption bleaching, or saturation, reported in SLG<sup>54–56</sup> due to photo-induced conductivity<sup>28</sup>. The calculated  $\Delta T/T_0$  in SLG-CSSR at  $\nu = \nu_0$  increases for higher  $Q$  (Fig. 3e). Conversely,  $\Delta T/T_0$  at  $\nu = 3\nu_0$ , decreases at high  $Q$  (Fig. 3f), as an effect of the larger  $\sigma_{3,\text{tot}}$  in SRRs having broader resonances. This reflects in a THG efficiency larger than that expected in narrower  $\Delta T/T_0$  ( $\nu_0$ )

(Fig. 3f). Plotting the THG efficiency,  $\Delta T/T_0$  ( $3\nu_0$ )<sup>26,30</sup> (Fig. 3g), as a function of electric field, one can see that the THG efficiency increases at high electric fields and in SRRs having low/moderate  $Q_s$ . As the input electric field and  $Q$  simultaneously increase, only the term at the fundamental frequency  $\Delta T/T_0$  ( $\nu_0$ ) becomes more pronounced if compared with the 3<sup>rd</sup> harmonic one  $\Delta T/T_0$  ( $3\nu_0$ ), hence quenching any possible THG effect.

### Third harmonic generation in optically pumped SLG-CSSR arrays

To demonstrate THG in the SLG-CSSR, we fabricate an array of SLG-CSSR with  $p = 14.5 \mu\text{m}$ , maintaining the geometrical parameters of individual SRRs as in Fig. 1. The SLG-CSSR is initially mounted in the internal unit of a FTIR under vacuum (Bruker, Vertex 80 v) illuminated, in transmission mode, by the internal source of the FTIR spectrometer to measure the transmission without and with the incident QCL beam (see Supplementary Note 6). In this case, the dip in the transmittance is weaker (-10%), in overall agreement with the expected non-linear increase of SLG transmittance under intense optical excitation, also depicted in Fig. 3e.

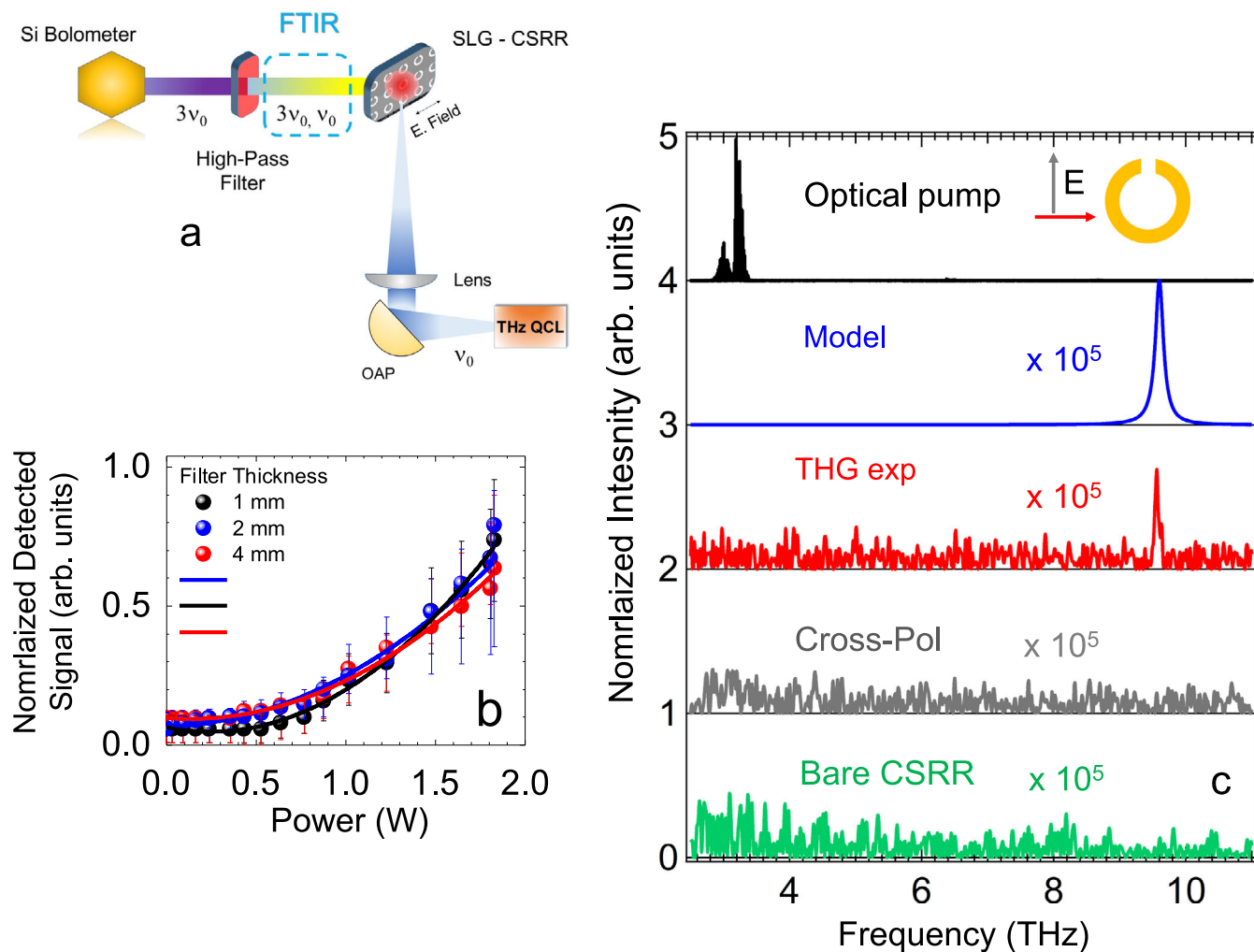
The SLG-CSSR array is then optically pumped with a THz frequency QCL, delivering 2.5 W peak optical power, driven in pulsed mode (pulse width = 1  $\mu$ s), and focused on a 700  $\mu\text{m}$  diameter circular spot on the SLG-CSSR gap (Fig. 4a). To isolate the up-converted signal, we position a -6 THz high-pass Ta-filter (Crystan limited, see Supplementary Note 7) along the optical path in front of the window of a Si bolometer (IR Lab), and detect the signal emitted by the optically pumped SLG-CSSR with a lock-in amplifier, referenced to the same signal used to amplitude-modulate the QCL.

We initially measure the signal detected by the bolometer with a set of Ta-filters having different thicknesses (Fig. 4b). The resulting data, Fig. 4b, shown after normalizing the signal by the transmission spectrum of each filter, are fitted by a 3<sup>rd</sup>-order polynomial function, confirming the signal is a 3<sup>rd</sup> order process, as expected from the calculated  $\Delta T/T_0$  ( $3\nu_0$ ) of Fig. 3g and Eqs. (2) and (3).

Then, we acquire the signal emitted by the SLG-CSSR, in step-scan mode, filtering the QCL, with the 2-mm-thick high bandpass Ta filter (see Supplementary Note 7), first orienting the SLG-CSSR along the polarization axis of the QCL, then perpendicularly. A peak at  $\sim 9.63$  THz, the signature of THG, at the 3<sup>rd</sup> order harmonic of the pump beam (Fig. 4c, top black curve) is only measured when the polarization of the pump beam coincides with the dipolar orientation of the CSRR (Fig. 4c, red curve). If the polarization is in the orthogonal orientation, no signal is visible (Fig. 4c, gray curve). Furthermore, it is not observed, under identical polarization conditions, when an identical metallic split ring is patterned on the substrate (Fig. 4c, green curve), unambiguously proving its origin. In the investigated frequency range, any FIR photons are absorbed by *Reststrahlenband*, hence no THG can arise from the QCL.

### Discussion

The THG signal is  $\sim 10^{-5}$  less intense than the most intense mode of the pumping QCL, in agreement with the conversion efficiency of  $\Delta T/T_0$  ( $3\nu_0$ ) -  $2.42 \times 10^{-5}$  calculated for our experimental configuration (blue curve, Fig. 4c) from the ratio between the detector signals retrieved with and without the  $\sim 6$  THz cutoff filter. Considering the flat spectral response of the Si-bolometer in the 3–10 THz range, we estimate a THG signal around  $\sim 7 \mu\text{W}$  at the QCL peak emission. Such a conversion efficiency is over two order of magnitude smaller than reported in refs. 26,30, owing to the steep reduction of the optical conductivity in the sub-THz if compared to  $> 3$  THz range<sup>35,42</sup>, and especially to the significantly higher field strength, even when accounting for the field enhancement provided by the CSRR. In a bare SLG film, the expected THG efficiency, in the same experimental configuration,



**Fig. 4 | THG at 9.63 THz in optically pumped SLG-CSRR.** **a** Schematic of the experiment. Light from a single-plasmon QCL, emitting 2.5 W in the free space, is focused on the SLG-CSRR array. The THG spectral signal is isolated after filtering the THz QCL with a  $\sim 6$  THz high bandpass Ta-filter. **b** Signal measured by the Si-bolometer with the experimental arrangement in **a**, while keeping the FTIR moving mirror fixed, as a function of QCL power, after filtering the QCL with Ta-filters of different thickness: 1 mm (black circles, high-pass transmittance  $\sim 65\%$ ), 2 mm (blue,  $\sim 59\%$ ), 4 mm (red,  $\sim 55\%$ ). The detected signal is normalized by the transmittance of each filter. The QCL driver is amplitude-modulated with a 317 Hz TTL signal, while acquiring the signal detected by a He-cooled Si-bolometer via a lock-in amplifier. The error bar on the y-axis represents the normalized noise level affecting each measure. The black, blue and red lines represent the fit functions  $y = y_0 + B \times (x - x_0)^3$ , where  $y_0$ ,  $x_0$  and  $B$  are free running parameters. The fit procedure converges in the 3 cases with correlation factors  $R > 0.9$ . **c** From top to bottom; black line: normalized emission spectra of THz QCL acquired at 15 K in rapid scan mode, with spectral resolution  $\sim 0.075 \text{ cm}^{-1}$  and aperture size  $\sim 1 \text{ mm}$ , to prevent FTIR detector saturation (y-axis offset +4, black). Blue line: THG efficiency

for an input power  $P_{\text{exp}} = 1.8 \text{ W}$ , accounting for reflection losses of both cryostat and FTIR optical windows, and a SLG-CSRR  $Q_{\text{exp}} = 10$  (from Fig. 2b). Red, grey lines: emission spectrum measured on the optically pumped SLG-CSRR, after filtering the QCL pump with the Ta-filter, measured in step-scan mode with a spectral resolution  $\sim 1 \text{ cm}^{-1}$  and aperture size  $\sim 5 \text{ mm}$ , with the SRR array oriented parallel (red) and perpendicular (gray) to the polarization axis of the QCL, as shown in the inset by the red and gray arrows, respectively. Green Line: Emission from the optically pumped bare CSRR array sample with the SRR array oriented parallel to the polarization axis of the QCL. For comparison with the top panel, all the experimental (red, gray and green) and theoretical (blue) curves in the panel are normalized by a factor  $2.42 \times 10^{-5}$ , accounting for the expected THG efficiency. The experimental THG is  $0.95 \times 10^{-5}$ , determined after accounting for the amplitudes from the different acquisition conditions (gain conversion of lock-in amplifier, FTIR aperture diameter). The inset in panel **c** shows the linear polarization directions employed to acquire the THG emissions: red curve (red arrow, polarization active direction) and gray curve (gray arrow, cross polarization of pump beam with respect to the CSRR array orientation).

would be  $-0.22 \times 10^{-5}$ , corresponding to  $0.65 \mu\text{W}$ , hence below the detection limit.

No signal at the second harmonic (SH) frequency is retrieved. A SH generation signal would rely on a nonzero second-order nonlinearity ( $\chi^{(2)} \neq 0$ ), prohibited by the centro-symmetrical nature of the hexagonal SLG structure.

An anisotropic SH signal could in principle arise in SLG on  $\text{SiO}_2$ <sup>57,58</sup> if the crystal orientation of SLG hexagonal structure with respect to the substrate crystal fulfills the conditions for dipolar symmetry breaking. However, in our polycrystalline SLG, comprising single crystalline domains of few microns size and random crystalline orientation, the

latter condition is not satisfied. Although the introduction of non-centrosymmetric resonator arrays could activate/enhance the even-order nonlinearities<sup>59,60</sup>, the efficiency of this effect is likely too weak in the proposed system<sup>32</sup>. In ref. 60, the reported SH generation in CSRRs relies a combination of impact ionization and non-linear Thomson scattering, to multiply and accelerate the free carriers and establish a significant out-of-plane Lorentz force<sup>60</sup>. While the field enhancement from the asymmetrical SRR ( $A_G \sim 15$ )<sup>60</sup> is in broad agreement with the value of our design ( $A_G \sim 13$ ), SH generation was observed with a tens of kV/cm pump field in a FEL, to drive the carrier to the impact ionization. Conversely, we here adopt fields  $\leq 1 \text{ kV/cm}$ . Although impact ionization



is possible in SLG<sup>61</sup>, the carrier density ( $\geq 10^{18} \text{ cm}^{-3}$ )/field-driven velocity (field  $\geq 25 \text{ kV/cm}$ ) thresholds are orders of magnitude higher than those adopted in our experimental condition. Furthermore, in our CSRR structure, with SLG patterned only in the split gap, the magnetic coupling enhancement of the CSRR design is spatially separated from the electric field area (see Supplementary Note 8). In our experiments, high harmonic generation results only from electric field enhancement, dominant at both fundamental and at third harmonic frequencies. At the second harmonic, on the other hand, the same amplification is not observed.

In conclusion, we engineered a SLG-CSRR for THG in the FIR range, exploiting the amplified field in the split gap of a CSRR and the intense nonlinear 3<sup>rd</sup>-order optical response in SLG. Emission at 9.63 THz is demonstrated when the SLG embedded in the CSRR is optically pumped with a compact 3.21 THz QCL, a frequency corresponding to the third order up-conversion of the fundamental laser mode. This paves the way for the demonstration of solid-state coherent emission in the FIR spectral range, through on-chip integration of SLG metasurfaces with miniaturized QCLs. Engineering smaller split gap resonators in a double-metal configuration could increase the optical amplification by enhancing field confinement. We used compact sources to target interactions only previously possible in FELs (magnons, phonons, spin, impact ionization<sup>62</sup>). This could lead to QCLs tumble over a phonon resonance, where nonlinearity is enhanced. Our results open the route for a fully integrated approach not possible with FELs or tabletop systems. SLG can be patterned over the surface of a THz QCL, whose intracavity power/field would be enough to induce FIR emission by electrical pumping. The same approach can be also adopted with alternative materials, such as topological insulators, that can overcome HHG efficiency limitations arising from SLG optical saturation<sup>63</sup>. This may enable novel applications to be addressed, ranging from high-resolution sensing of complex biomolecules<sup>64</sup> that fall in the *Reststrahlenband* of existing QCLs, high field THz physics, and near-field s-SNOM for quantum nanoscopy in the 25–60  $\mu\text{m}$  range, where many plasmonic, phonon and magnetic phenomena occur.

## Methods

### SLG synthesis and transfer

SLG is grown on Cu foil (35  $\mu\text{m}$  thick) at 1050 °C via low-pressure chemical vapor deposition (CVD), employing a quartz tube furnace. SLG on Cu is then wet transferred onto the target substrates<sup>65</sup>: A4-950K poly(methyl-methacrylate) polymer (PMMA) is spin coated at 2000 rpm on the top surface of the sample (1 cm  $\times$  1 cm), followed by 1 min baking on a hot plate at 90 °C. Mild oxygen plasma is utilized to remove SLG on the bottom surface. After that, the PMMA/SLG/Cu sample is placed in a solution of 1 g of ammonium persulfate and 40 ml of DI water to etch Cu. Once Cu etching is complete, the PMMA-SLG film is transferred in a beaker with DI water and then lifted with the previously prepared substrate hosting the CSRR array. This sample is left to dry overnight, followed by PMMA removal with acetone.

### FEM simulations

The CSRR single unit element with the geometry illustrated in Fig. 1b comprises a perfect conductor C-shaped ribbon, embedded at the interface between a 300-nm-SiO<sub>2</sub>/Si bottom and air top domains. The unit cell pitch is  $p = 14.5 \mu\text{m}$ , and the total height of the calculation domain is 85  $\mu\text{m}$ , accounting for 35  $\mu\text{m}$  dielectric and 50  $\mu\text{m}$  air. The FEM calculations (by COMSOL Multiphysics) are carried out by setting Floquet boundary conditions along the x,y side edges, and scattering boundary conditions on the top and bottom domain edges (z edges). The S-parameters are extracted by placing one input port on top of the air domain and one receiver port on the bottom of the Si domain. The transmittance is calculated by the square magnitude of the  $S_{21}$

parameter,  $T = |S_{21}|^2$ .  $A_G$  is derived as the ratio between electric field magnitude averaged over the gap region, defining a box centered in the gap of volume  $5 \times 5 \times 5 \mu\text{m}^3$ , and the field magnitude averaged over a box volume of identical size, positioned at the center of the ring (no-enhancement region).

### Device fabrication

The SLG CSRR is fabricated on a high ( $10^4 \Omega\text{cm}$ )-resistivity 300- $\mu\text{m}$ -thick Si substrate to ensure THz transparency, coated with 300 nm SiO<sub>2</sub> (by Siltronyx). The CSRR array pattern is defined by optical lithography using a LOR3A/S1805 bilayer photoresist, on a  $6 \times 6 \text{ mm}^2$  area, followed by metal evaporation and liftoff of 10 nm/80 nm of Cr/Au. SLG is then transferred on the top of the CSRR array, via a PMMA assisted method<sup>65</sup>, using a  $1 \times 1 \text{ cm}^2$  film. Then, the SLG in the gap area is defined with a second optical lithography step for SLG mask photoresist patterning, followed by a plasma-O<sub>2</sub> etching to remove the SLG film from the desired area, and a final cleaning by acetone soaking. The single-plasmon THz QCL, emitting at 3.21 THz ( $\lambda = 107 \mu\text{m}$ ), employed for the pump and probe experiments, exploits a bound to continuum-optical phonon hybrid active region design. The 25- $\mu\text{m}$ -thick GaAs/AlGaAs active region is patterned into a surface-plasmon waveguide onto a GaAs substrate through a combination of optical lithography and metal deposition. A 5-nm-thick, 40- $\mu\text{m}$ -wide Ni side-absorber is introduced on each edge of the ridge to increase the difference in losses between fundamental and higher order transverse modes, to fully suppress the higher-order competing modes. An overlap of 3  $\mu\text{m}$  between each Ni side-absorber and the upper Au over-layer, 150 nm thick, is set by design. The 700-nm-thick heavily Si-doped ( $5 \times 10^{18} \text{ cm}^{-3}$ ) GaAs top contact layer lies between active region and substrate.

### Scattering scanning near-field optical microscopy

The THz QCL is operated in CW, with radiation collimated by a 50 mm focal length parabolic mirror, focused by two parabolic mirrors ( $f/1 = 2$  inches) on an AFM tip (25PtIr300BH-40, 80  $\mu\text{m}$  long Rocky Mountain Nanotechnology, 40 nm apex-radius) of an s-SNOM microscope (Neaspec/Attocube). The THz radiation is concentrated at the tip apex by the lightning-rod effect and adiabatic compression. The radiation backscattered by the tip ( $\sim 10^{-3}$  of the emitted power) is then coupled into the laser cavity and the SM signal detected as a perturbation ( $\Delta V$ ) to the QCL contact voltage. The AFM tip is operated in tapping mode at a frequency  $\Omega \sim 22 \text{ kHz}$ , such that the near-field contribution to the SM signal can be isolated by lock-in detection (with a UHFLI from Zurich Instruments) at the tapping frequency harmonics  $n\Omega$ , with  $n = 2, 3, 4$ , and 5.

### Data availability

The data presented in this study are available on request from the corresponding author.

### Code availability

The relevant computer codes supporting this study are available from the authors upon request.

## References

1. Cathabard, O., Teissier, R., Devenson, J., Moreno, J. C. & Baranov, A. N. Quantum cascade lasers emitting near 2.6  $\mu\text{m}$ . *Appl. Phys. Lett.* **96**, 141110 (2010).
2. Ohtani, K., Beck, M. & Faist, J. Double metal waveguide InGaAs/AlInAs quantum cascade lasers emitting at 24  $\mu\text{m}$ . *Appl. Phys. Lett.* **105**, 121115 (2014).
3. Shahili, M. & Williams, B. Design strategies for GaAs-based THz quantum-cascade lasers in the 5-6 THz range. *Proc. SPIE* **PC12440**, PC124400V (2023).

4. Walther, C. et al. Quantum cascade lasers operating from 1.2 to 1.6 THz. *Appl. Phys. Lett.* **91**, 131122 (2007).
5. Dhillon, S. S. et al. The 2017 terahertz science and technology roadmap. *J. Phys. D: Appl. Phys.* **50**, 43001 (2017).
6. Pogna, E. A. A. et al. Mapping propagation of collective modes in Bi<sub>2</sub>Se<sub>3</sub> and Bi<sub>2</sub>Te<sub>2.2</sub>Se<sub>0.8</sub> topological insulators by near-field terahertz nanoscopy. *Nat. Commun.* **12**, 6672 (2021).
7. Curl, R. F. et al. Quantum cascade lasers in chemical physics. *Chem. Phys. Lett.* **487**, 1–18 (2010).
8. Isensee, K., Kröger-Lui, N. & Petrich, W. Biomedical applications of mid-infrared quantum cascade lasers – a review. *Analyst* **143**, 5888–5911 (2018).
9. Schwaighofer, A., Brandstetter, M. & Lendl, B. Quantum cascade lasers (QCLs) in biomedical spectroscopy. *Chem. Soc. Rev.* **46**, 5903–5924 (2017).
10. Botez D. & Belkin, M. A. Mid-Infrared and Terahertz Quantum Cascade Lasers. *Cambridge University Press* (2023).
11. Vitiello, M. S., Scalari, G. & Williams, B. & De Natale, P. Quantum cascade lasers: 20 years of challenges. *Opt. Express* **23**, 5167–5182 (2015).
12. Vitiello, M. S. & De Natale, P. Terahertz Quantum Cascade Lasers as Enabling Quantum Technology. *Adv. Quantum Technol.* **5**, 2100082 (2022).
13. Liu, J. et al. Molecular Characterization of Hydrocarbons in Petroleum by Ultrahigh-Resolution Mass Spectrometry. *Energies* **16**, 563–564 (2023).
14. Feng, K., Streyer, W., Zhong, Y., Hoffman, A. J. & Wasserman, D. Photonic materials, structures and devices for Reststrahlen optics. *Opt. Express* **23**, A1418–A1433 (2015).
15. Basov, D. N., Fogler, M. M., Lanzara, A., Wang, F. & Zhang, Y. Colloquium: Graphene spectroscopy. *Rev. Mod. Phys.* **86**, 959–994 (2014).
16. He, Y. et al. A two-qubit gate between phosphorus donor electrons in silicon. *Nature* **571**, 371–375 (2019).
17. Burford, N. M. & El-Shenawee, M. O. Review of terahertz photoconductive antenna technology. *Opt. Eng.* **56**, 10901 (2017).
18. Seifert, T. et al. Efficient metallic spintronic emitters of ultrabroadband terahertz radiation. *Nat. Photonics* **10**, 483–488 (2016).
19. Dang, T. H. et al. Ultrafast spin-currents and charge conversion at 3d-5d interfaces probed by time-domain terahertz spectroscopy. *Appl. Phys. Rev.* **7**, 41409 (2020).
20. Ilyakov, I. et al. Efficient ultrafast field-driven spin current generation for spintronic terahertz frequency conversion. *Nat. Commun.* **14**, 7010 (2023).
21. Odashima, H., Zink, L. R. & Evenson, K. M. Tunable far-infrared spectroscopy extended to 9.1 THz. *Opt. Lett.* **24**, 406–407 (1999).
22. FLASH project. [www.flash-proj.eu](http://www.flash-proj.eu) (2017).
23. ZOTERAC project. <http://www.zoterac.eu/> (2015).
24. Stark, D. et al. THz intersubband electroluminescence from n-type Ge/SiGe quantum cascade structures. *Appl. Phys. Lett.* **118**, 101101 (2021).
25. Hafez, H. A. et al. Terahertz Nonlinear Optics of Graphene: From Saturable Absorption to High-Harmonics Generation. *Adv. Opt. Mater.* **8**, 1900771 (2020).
26. Hafez, H. A. et al. Extremely efficient terahertz high-harmonic generation in graphene by hot Dirac fermions. *Nature* **561**, 507–511 (2018).
27. Mikhailov, S. A. Non-linear electromagnetic response of graphene. *Europhys. Lett.* **79**, 27002 (2007).
28. Mikhailov, S. A. Quantum theory of the third-order nonlinear electrodynamic effects of graphene. *Phys. Rev. B* **93**, 85403 (2016).
29. Brida, D. et al. Ultrafast collinear scattering and carrier multiplication in graphene. *Nat. Commun.* **4**, 1987 (2013).
30. Han, J. W. et al. Plasmonic Terahertz Nonlinearity in Graphene Disks. *Adv. Photonics Res.* **3**, 2100218 (2022).
31. Kovalev, S. et al. Electrical tunability of terahertz nonlinearity in graphene. *Sci. Adv.* **7**, eabf9809 (2023).
32. Deinert, J.-C. et al. Grating-Graphene Metamaterial as a Platform for Terahertz Nonlinear Photonics. *ACS Nano* **15**, 1145–1154 (2021).
33. Seo, M. A. et al. Terahertz field enhancement by a metallic nano slit operating beyond the skin-depth limit. *Nat. Photonics* **3**, 152–156 (2009).
34. Song, C. et al. High-power density, single plasmon, terahertz quantum cascade lasers via transverse mode control. *Appl. Phys. Lett.* **122**, 121108 (2023).
35. Horng, J. et al. Drude conductivity of Dirac fermions in graphene. *Phys. Rev. B* **83**, 165113 (2011).
36. Mak, K. F. et al. Measurement of the Optical Conductivity of Graphene. *Phys. Rev. Lett.* **101**, 196405 (2008).
37. Padilla, W. J., Basov, D. N. & Smith, D. R. Negative refractive index metamaterials. *Mater. Today* **9**, 28–35 (2006).
38. Al-Naib, I. & Withayachumnankul, W. Recent Progress in Terahertz Metasurfaces. *J. Infrared Millim. Terahertz Waves* **38**, 1067–1084 (2017).
39. Kim, S. et al. High-harmonic generation by resonant plasmon field enhancement. *Nature* **453**, 757–760 (2008).
40. You, J. W. & Panoiu, N. C. Polarization control using passive and active crossed graphene gratings. *Opt. Express* **26**, 1882–1894 (2018).
41. Lazzeri, M., Piscanec, S., Mauri, F., Ferrari, A. C. & Robertson, J. Electron Transport and Hot Phonons in Carbon Nanotubes. *Phys. Rev. Lett.* **95**, 236802 (2005).
42. Di Gaspere, A. et al. Electrically Tunable Nonlinearity at 3.2 Terahertz in Single-Layer Graphene. *ACS Photonics*, <https://doi.org/10.1021/acsphotonics.3c00543> (2023).
43. Pistore, V. et al. Self-Induced Phase Locking of Terahertz Frequency Combs in a Phase-Sensitive Hyperspectral Near-Field Nanoscope. *Adv. Sci.* **n/a**, 2200410 (2022).
44. Giordano, M. C. et al. Phase-resolved terahertz self-detection near-field microscopy. *Opt. Express* **26**, 18423–18435 (2018).
45. Soavi, G. et al. Broadband, electrically tunable third-harmonic generation in graphene. *Nat. Nanotechnol.* **13**, 583–588 (2018).
46. Massicotte, M., Soavi, G., Principi, A. & Tielrooij, K.-J. Hot carriers in graphene – fundamentals and applications. *Nanoscale* **13**, 8376–8411 (2021).
47. Sun, D. et al. Ultrafast Relaxation of Excited Dirac Fermions in Epitaxial Graphene Using Optical Differential Transmission Spectroscopy. *Phys. Rev. Lett.* **101**, 157402 (2008).
48. Bonini, N., Lazzeri, M., Marzari, N. & Mauri, F. Phonon anharmonicities in graphite and graphene. *Phys. Rev. Lett.* **99**, 176802 (2007).
49. Cox, J. D., Silveiro, I. & García de Abajo, F. J. Quantum Effects in the Nonlinear Response of Graphene Plasmons. *ACS Nano* **10**, 1995–2003 (2016).
50. Al-Naib, I. et al. Effect of local field enhancement on the nonlinear terahertz response of a silicon-based metamaterial. *Phys. Rev. B* **88**, 195203 (2013).
51. Cheng, J. L., Vermeulen, N. & Sipe, J. E. Third order optical nonlinearity of graphene. *N. J. Phys.* **16**, 53014 (2014).
52. Cheng, J. L., Vermeulen, N. & Sipe, J. E. Third-order nonlinearity of graphene: Effects of phenomenological relaxation and finite temperature. *Phys. Rev. B* **91**, 235320 (2015).
53. Navaeipour, P. & Dignam, M. M. Effects of microscopic scattering on terahertz third harmonic generation in monolayer graphene. *Phys. Rev. B* **105**, 115431 (2022).
54. Bianchi, V. et al. Terahertz saturable absorbers from liquid phase exfoliation of graphite. *Nat. Commun.* **8**, 1–9 (2017).
55. Di Gaspere, A. et al. All in One-Chip, Electrolyte-Gated Graphene Amplitude Modulator, Saturable Absorber Mirror and Metrological Frequency-Tuner in the 2–5 THz Range. *Adv. Opt. Mater.* **10**, 2200819 (2022).

56. Bianco, F. et al. THz saturable absorption in turbostratic multilayer graphene on silicon carbide. *Opt. Express* **23**, 11632–11640 (2015).
57. Dean, J. J. & van Driel, H. M. Second harmonic generation from graphene and graphitic films. *Appl. Phys. Lett.* **95**, 261910 (2009).
58. Dean, J. J. & van Driel, H. M. Graphene and few-layer graphite probed by second-harmonic generation: Theory and experiment. *Phys. Rev. B* **82**, 125411 (2010).
59. Niesler, F. B. P., Feth, N., Linden, S. & Wegener, M. Second-harmonic optical spectroscopy on split-ring-resonator arrays. *Opt. Lett.* **36**, 1533–1535 (2011).
60. Wen, Y. et al. A universal route to efficient non-linear response via Thomson scattering in linear solids. *Natl Sci. Rev.* **10**, nwad136 (2023).
61. Pirro, L., Girdhar, A., Leblebici, Y. & Leburton, J.-P. Impact ionization and carrier multiplication in graphene. *J. Appl. Phys.* **112**, 93707 (2012).
62. Meng, F. et al. Intracavity third-harmonic generation in Si:B pumped by intense terahertz pulses. *Phys. Rev. B* **102**, 75205 (2020).
63. Tielrooij, K.-J. et al. Milliwatt terahertz harmonic generation from topological insulator metamaterials. *Light Sci. Appl.* **11**, 315 (2022).
64. Richter, M. et al. Ultrasensitive marker-free biomolecular THz-detection for tumor-related analytics. *Frequenz* **76**, 627–637 (2022).
65. Bonaccorso, F. et al. Production and processing of graphene and 2d crystals. *Mater. Today* **15**, 564–589 (2012).

## Acknowledgements

We thank Oleg Mitrofanov for helpful discussions. We acknowledged funding from the European Union through the FET Open project EXTREME IR (944735), the Graphene Flagship, and EPSRC programme grants HyperTerahertz (EP/PO21859/1) and TeraCom (EP/WO28921/1), EPSRC Grants EP/KO1711X/1, EP/KO17144/1, EP/N010345/1, EP/L016087/1, EP/X015742/1, EP/V000055/1, EP/X015742/1, ERC grants Hetero2D, GSYNCOR, GIPT, EU grants CHARM, Graph-X.

## Author contributions

M.S.V. conceived and supervised the experiment. A.D. fabricated the devices, set up the transport and optical experiment, performed numerical simulations. M.S.V. and A.D. interpreted the data. C. Song and S.S.D., designed the and performed preliminary optical measurements of the CSRR. C.Schiattarella, performed the s-SNOM characterization. L.H.L, M.S, A.G.D. and E.H.L grew by molecular beam epitaxy and optimized the

QCL structure. J.Z., O.B., and A.C.F grew the high crystalline quality graphene film on Cu and conducted Raman characterization. The manuscript was written by M.S.V. and A.D. All authors contributed to the final version of the manuscript and to discuss the results.

## Competing interests

The authors declare no competing interests.

## Additional information

**Supplementary information** The online version contains supplementary material available at <https://doi.org/10.1038/s41467-024-45267-2>.

**Correspondence** and requests for materials should be addressed to Miriam S. Vitiello.

**Peer review information** *Nature Communications* thanks the anonymous reviewer for their contribution to the peer review of this work. A peer review file is available.

**Reprints and permissions information** is available at <http://www.nature.com/reprints>

**Publisher's note** Springer Nature remains neutral with regard to jurisdictional claims in published maps and institutional affiliations.

**Open Access** This article is licensed under a Creative Commons Attribution 4.0 International License, which permits use, sharing, adaptation, distribution and reproduction in any medium or format, as long as you give appropriate credit to the original author(s) and the source, provide a link to the Creative Commons licence, and indicate if changes were made. The images or other third party material in this article are included in the article's Creative Commons licence, unless indicated otherwise in a credit line to the material. If material is not included in the article's Creative Commons licence and your intended use is not permitted by statutory regulation or exceeds the permitted use, you will need to obtain permission directly from the copyright holder. To view a copy of this licence, visit <http://creativecommons.org/licenses/by/4.0/>.

© The Author(s) 2024